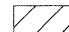



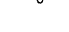


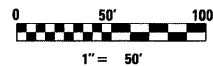
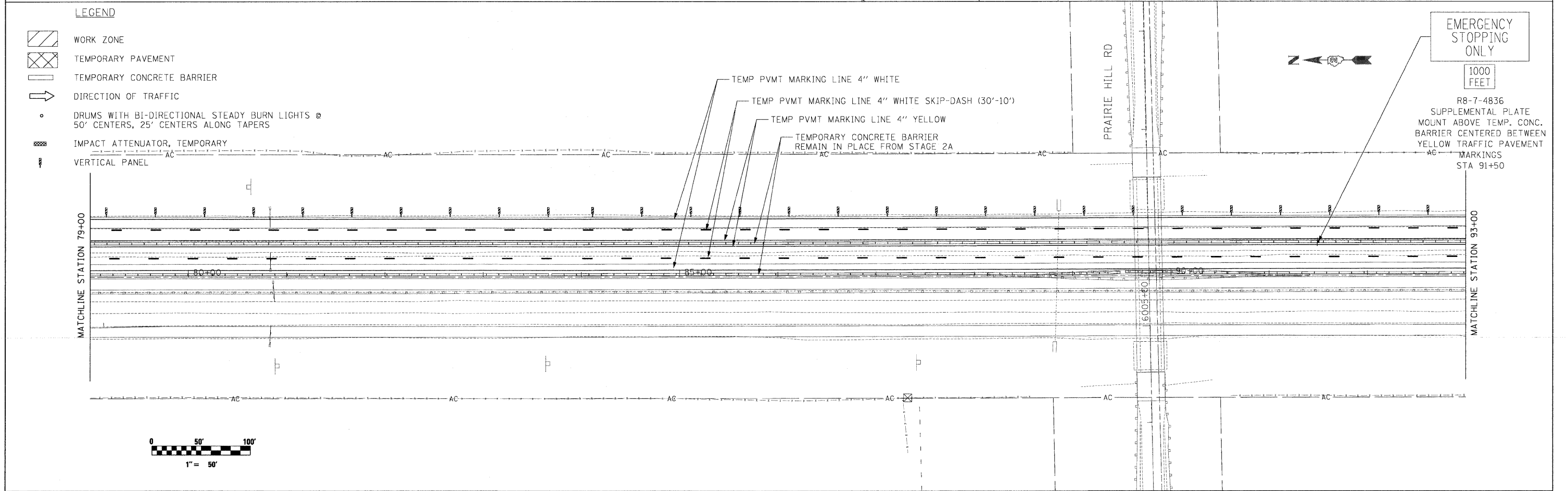


**LEGEND**

-  WORK ZONE
-  TEMPORARY PAVEMENT
-  TEMPORARY CONCRETE BARRIER
-  DIRECTION OF TRAFFIC
-  DRUMS WITH BI-DIRECTIONAL STEADY BURN LIGHTS @ 50' CENTERS, 25' CENTERS ALONG TAPERS
-  IMPACT ATTENUATOR, TEMPORARY
-  VERTICAL PANEL



**McClure LOCHNER**  
Engineering Associates, Inc.  
**RWA**  
Ralph W. Anderson & Associates, Inc.

USER NAME = .USERNAME.  
 PLOT SCALE = 50.0000' / IN.  
 PLOT DATE = 10/19/2011

DESIGNED - CGC  
 DRAWN - CGC  
 CHECKED - AM  
 DATE - 10/14/2011

REVISED -  
 REVISED -  
 REVISED -  
 REVISED -

**STATE OF ILLINOIS  
 DEPARTMENT OF TRANSPORTATION**

**MOT I-90 STAGE 2B**

SCALE: 1"=50' SHEET NO. OF SHEETS STA. 65+00 TO STA. 93+00

F.A.I. RTE.	SECTION	COUNTY	TOTAL SHEETS	SHEET NO.
90	(X2-1)R	WINNEBAGO	510	191
CONTRACT NO. 64C29			ILLINOIS FED. AID PROJECT	