

DRAINAGE STRUCTURE SCHEDULE

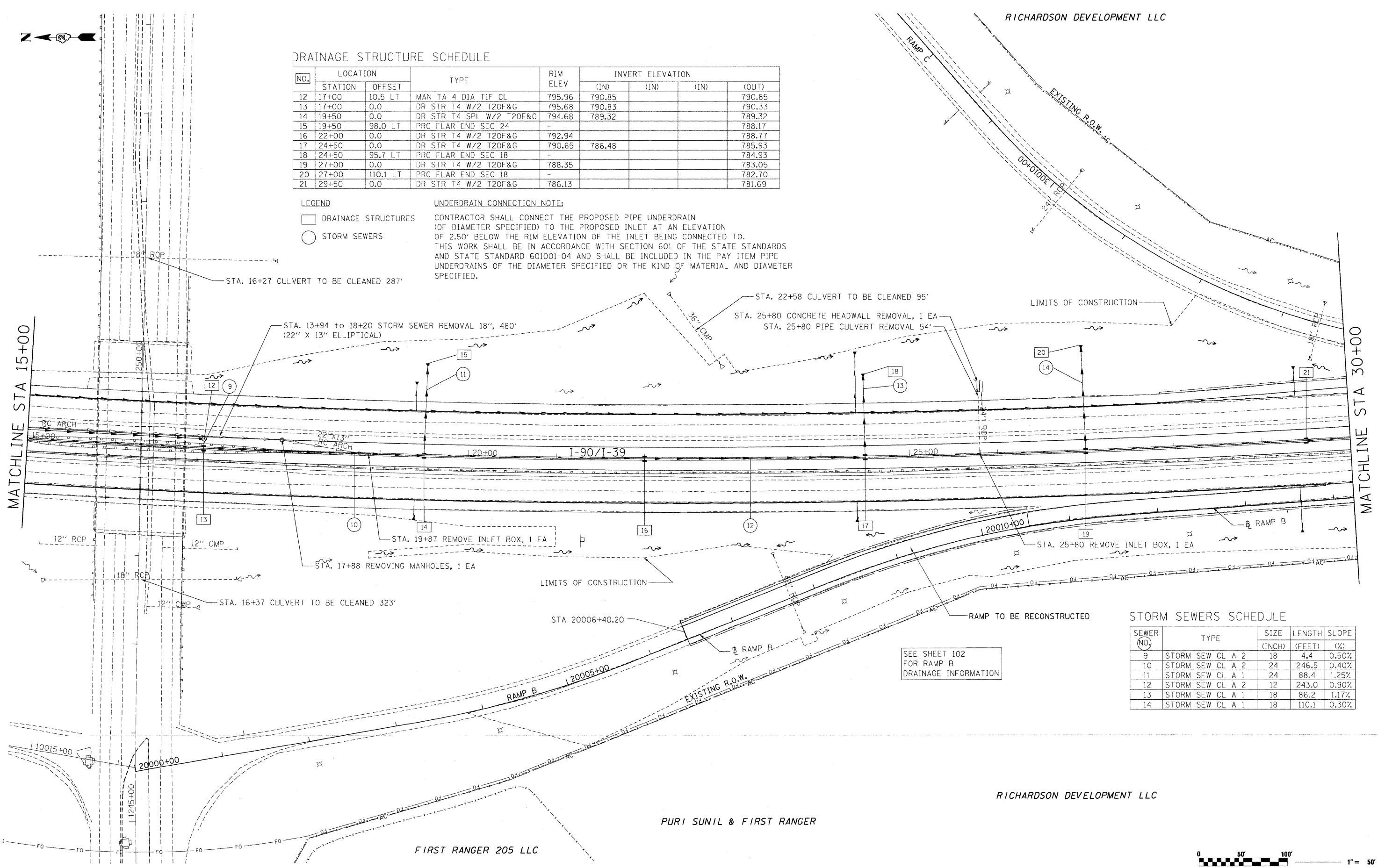
NO.	LOCATION		TYPE	RIM ELEV	INVERT ELEVATION			
	STATION	OFFSET			(IN)	(IN)	(IN)	(OUT)
12	17+00	10.5 LT	MAN TA 4 DIA TIF CL	795.96	790.85		790.85	
13	17+00	0.0	DR STR T4 W/2 T20F&G	795.68	790.83		790.33	
14	19+50	0.0	DR STR T4 SPL W/2 T20F&G	794.68	789.32		789.32	
15	19+50	98.0 LT	PRC FLAR END SEC 24	-			788.17	
16	22+00	0.0	DR STR T4 W/2 T20F&G	792.94			788.77	
17	24+50	0.0	DR STR T4 W/2 T20F&G	790.65	786.48		785.93	
18	24+50	95.7 LT	PRC FLAR END SEC 18	-			784.93	
19	27+00	0.0	DR STR T4 W/2 T20F&G	788.35			783.05	
20	27+00	110.1 LT	PRC FLAR END SEC 18	-			782.70	
21	29+50	0.0	DR STR T4 W/2 T20F&G	786.13			781.69	

LEGEND

- DRAINAGE STRUCTURES
- STORM SEWERS

UNDERDRAIN CONNECTION NOTE:

CONTRACTOR SHALL CONNECT THE PROPOSED PIPE UNDERDRAIN (OF DIAMETER SPECIFIED) TO THE PROPOSED INLET AT AN ELEVATION OF 2.50' BELOW THE RIM ELEVATION OF THE INLET BEING CONNECTED TO. THIS WORK SHALL BE IN ACCORDANCE WITH SECTION 601 OF THE STATE STANDARDS AND STATE STANDARD 601001-04 AND SHALL BE INCLUDED IN THE PAY ITEM PIPE UNDERDRAINS OF THE DIAMETER SPECIFIED OR THE KIND OF MATERIAL AND DIAMETER SPECIFIED.



STORM SEWERS SCHEDULE

SEWER NO.	TYPE	SIZE (INCH)	LENGTH (FEET)	SLOPE (%)
9	STORM SEW CL A 2	18	4.4	0.50%
10	STORM SEW CL A 2	24	246.5	0.40%
11	STORM SEW CL A 1	24	88.4	1.25%
12	STORM SEW CL A 2	12	243.0	0.90%
13	STORM SEW CL A 1	18	86.2	1.17%
14	STORM SEW CL A 1	18	110.1	0.30%

SEE SHEET 102 FOR RAMP B DRAINAGE INFORMATION

