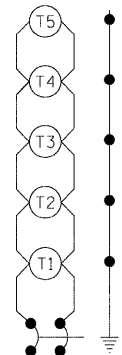
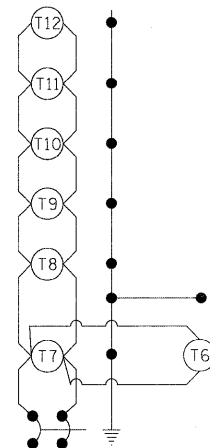


EAST SIDE  
CONTROLLER 2  
CKT. 7 (TEMPORARY LIGHTING)

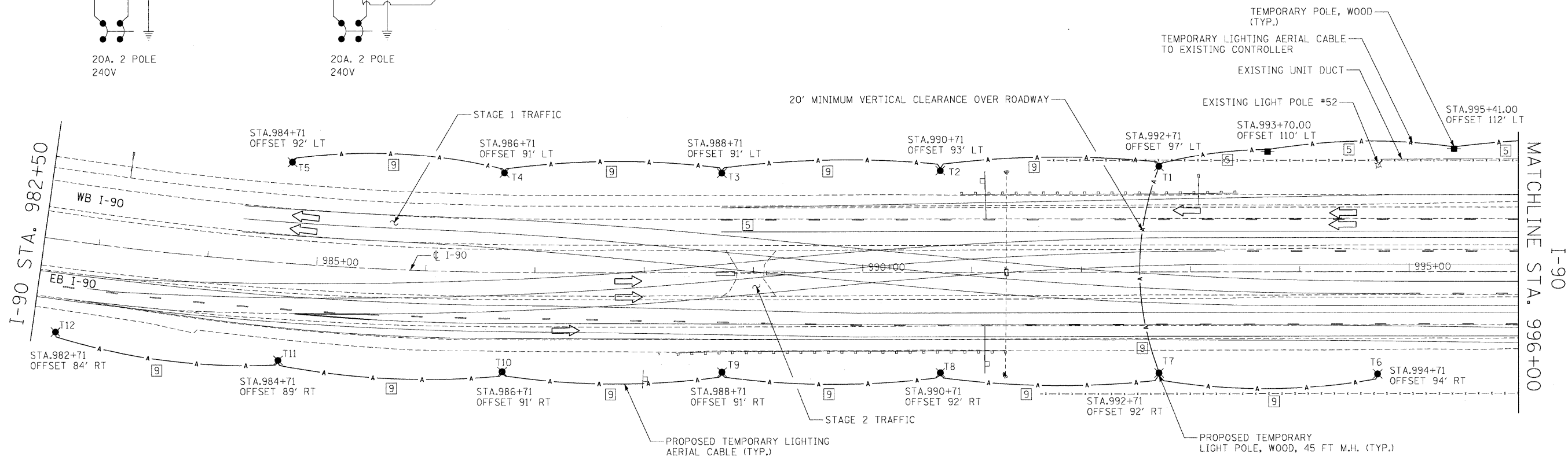


20A, 2 POLE  
240V

EAST SIDE  
CONTROLLER 2  
CKT. 8 (TEMPORARY LIGHTING)



20A, 2 POLE  
240V

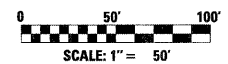


LEGEND:

- EXISTING UNIT DUCT
- ▲— PROPOSED TEMPORARY LIGHTING AERIAL CABLE
- ⊗ EXISTING LIGHT POLE TO REMAIN UNLESS NOTED OTHERWISE
- ⊗ PROPOSED TEMPORARY LIGHT POLE, WOOD, 45 FT. M.H. TENON MOUNT WITH (1) 250W HPS VAPOR FIXTURE
- PROPOSED TEMPORARY WOOD POLE, 40 FT., CLASS 4 (UNLESS NOTED OTHERWISE)
- ⑤ AERIAL CABLE, 4-1/C NO. 2/0 WITH MESSENGER WIRE
- ⑨ AERIAL CABLE, 2-1/C NO. 2/0 WITH MESSENGER WIRE

NOTES:

1. CONTRACTOR MUST LOCATE EXISTING UNIT DUCT BEFORE INSTALLING TEMPORARY WOOD POLES AND TEMPORARY LIGHT POLES.
2. ALL PROPOSED TEMPORARY LIGHT POLES TO BE 45 FT MOUNTING HEIGHT UNLESS OTHERWISE NOTED.
3. CONTRACTOR MUST PROVIDE APPROPRIATE LENGTH OF TEMPORARY WOOD POLE TO MAINTAIN MINIMUM 20' VERTICAL CLEARANCE OVER ROADWAYS.



USER NAME = .USERNAME.	DESIGNED - BLM	REVISED -
PLOT SCALE = 50,000 ' / IN.	DRAWN - JPW	REVISED -
PLOT DATE = 10/19/2011	CHECKED - BLM	REVISED -
	DATE - 10/14/11	REVISED -

STATE OF ILLINOIS  
DEPARTMENT OF TRANSPORTATION

I-90 TEMPORARY LIGHTING PLAN  
WISCONSIN CROSSOVER

SCALE: SHEET NO. OF SHEETS STA. TO STA.

F.A.I. RTE.	SECTION	COUNTY	TOTAL SHEETS	SHEET NO.
90	(X2-1)R	WINNEBAGO	510	258
CONTRACT NO. 64C29				
ILLINOIS FED. AID PROJECT				