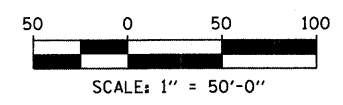
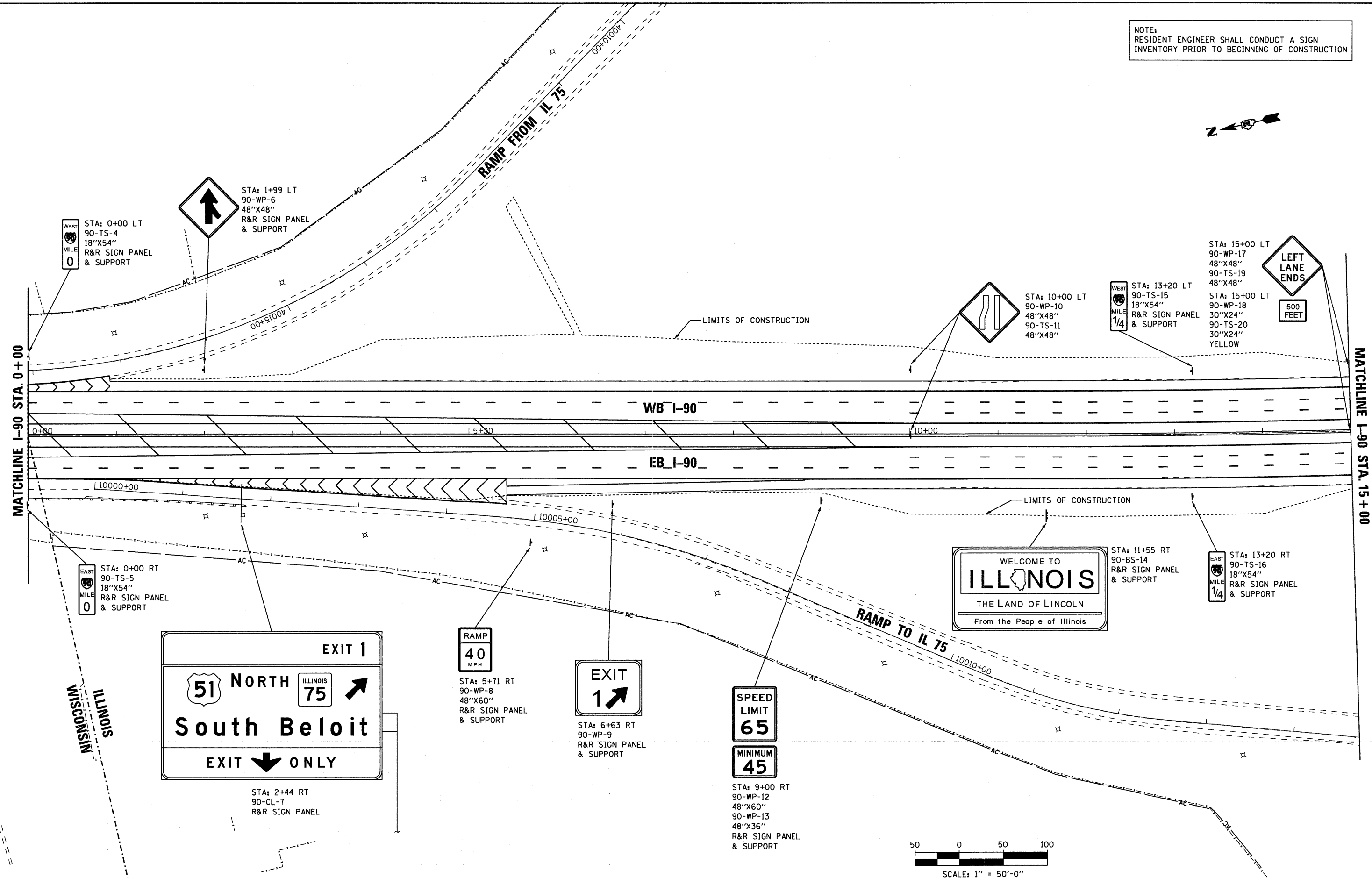


NOTE:
RESIDENT ENGINEER SHALL CONDUCT A SIGN
INVENTORY PRIOR TO BEGINNING OF CONSTRUCTION



	USER NAME = .USERNAME.	DESIGNED -	REVISED -	STATE OF ILLINOIS DEPARTMENT OF TRANSPORTATION	EXISTING AND PROPOSED SIGNING PLAN I-90 FROM WISCONSIN STATE LINE TO ROCKTON ROAD	F.A.I. RTE.	SECTION	COUNTY	TOTAL SHEETS	SHEET NO.
			DRAWN - JDH CHECKED - DW DATE - 10-21-2011			REVISED - REVISED - REVISED -	90	(X2-1) R	WINNEBAGO	510
SCALE: 1"=50'-0" SHEET NO. 2 OF 9 SHEETS STA. 0+00 TO STA. 15+00						CONTRACT NO. 64C29 ILLINOIS FED. AID PROJECT				