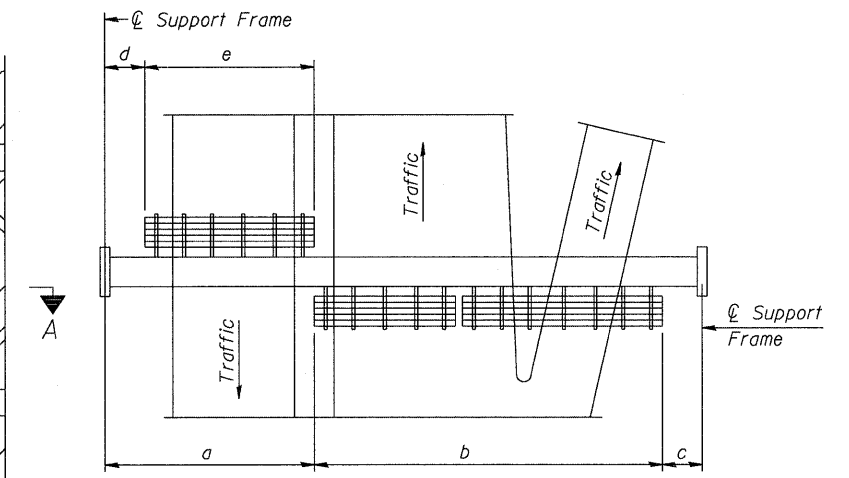


**TYPICAL FRONT ELEVATION**  
 With lights and handrail omitted for clarity.  
 For Section B-B, see Base Sheet OS-A-10.



**PLAN WALKWAY AND HANDRAIL SKETCH**  
 (Road plan beneath truss varies)

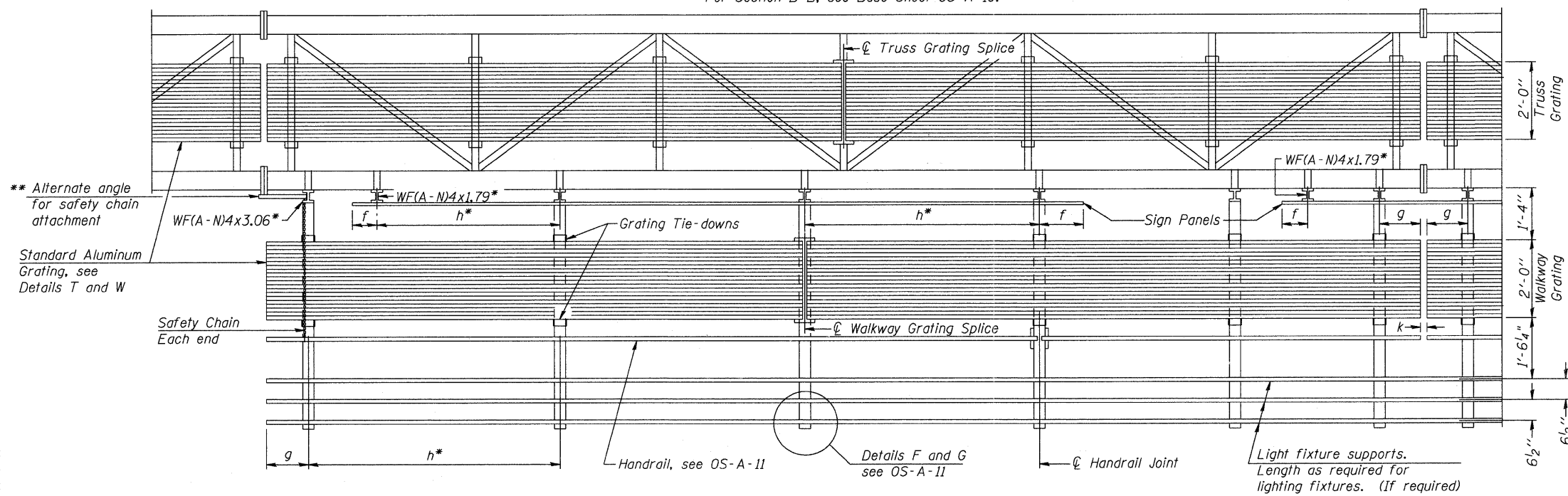
**BRACKET TABLE**

WF(A-N)4x1.79 or WF(A-N)4x3.06 ASTM B308, Alloy 6061-T6		
Sign Width		Number Brackets Required
Greater Than	Less Than or Equal To	
	8'-0"	2
8'-0"	14'-0"	3
14'-0"	20'-0"	4
20'-0"	26'-0"	5
26'-0"	32'-0"	6

Notes:  
 \* Space walkway brackets WF(A-N)4x3.06 and sign brackets WF(A-N)4x1.79 for efficiency and within limits shown:  
 f = 12" maximum, 4" minimum (End of sign to  $\phi$  of nearest bracket)  
 g = 12" maximum, 4" minimum (End of walkway grating to  $\phi$  of nearest support bracket)  
 h = 6'-0" maximum ( $\phi$  to  $\phi$  sign and/or walkway support brackets, WF(A-N)4x1.79 or WF(A-N)4x3.06)  
 k = 2" maximum gap between adjacent walkway grating sections and handrail ends

\*\* If walkway bracket at safety chain location is behind sign, add angle to bracket, see Alternate Safety Chain Attachment on Base Sheet OS-A-11.

For Details T and W, Section B-B and Grating Splice Details see Base Sheet OS-A-10.  
 For Handrail Details see Base Sheet OS-A-11.



**SECTION A-A**

Handrail and walkway shall span a minimum of three brackets between splices and/or gap joints.  
 Place all sign and walkway brackets as close to panel points as practical.  
 Handrail joints, grating, and light support splices placed as needed.

Structure Number	Station	a	b	c	d	e	Walkway Grating and Handrail Lengths
2S1011090L00.65	34+18 LT	9'	67'	44'	-	-	67'

Truss grating to facilitate inspection shall run full length (center to center of support frames)  $\pm 12"$  on overhead trusses.  
 Cost of truss grating is included in "Overhead Sign Structure".

Walkway and Truss Grating width dimensions are nominal and may vary  $\pm 1/2"$  based on available standard widths.

OS-A-9

1-20-11

McClure LOCHNER  
 RVA  
 QEI

USER NAME =	DESIGNED -	REVISED -
PLOT SCALE =	CHECKED - DW	REVISED -
PLOT DATE = 10/19/2011	DRAWN - JDH	REVISED -
	DATE - 10-21-2011	REVISED -

**STATE OF ILLINOIS  
 DEPARTMENT OF TRANSPORTATION**

**OVERHEAD SIGN STRUCTURES  
 ALUMINUM WALKWAY DETAILS**

SHEET NO. 9 OF 20 SHEETS

F.A. RTE. 90	SECTION (X2-1) R	COUNTY WINNEBAGO	TOTAL SHEETS 510	SHEET NO. 316
			CONTRACT NO. 64C29	
ILLINOIS FED. AID PROJECT				