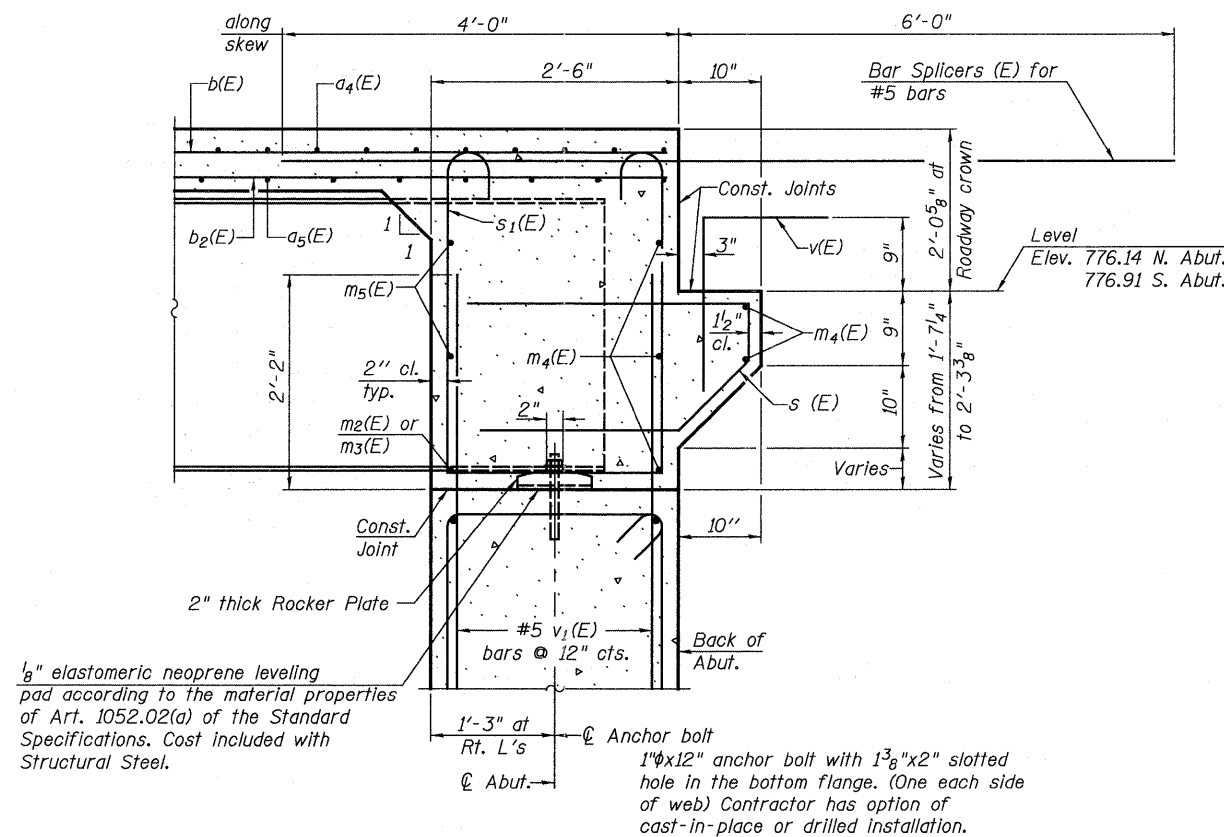


DIAPHRAGM ELEVATION AT ABUTMENT
(Looking South at the South Abutment)

Notes:
Reinforcement bars in diaphragm are billed with superstructure on sheet 17 of 48.
Concrete in diaphragm is included with Concrete Superstructure on sheet 17 of 48.
The s(E) and s₁(E) bars shall be placed parallel to the beams. Spacing for these bars shall be at right angles to the beams.

MIN. BAR LAP
#6 bar = 3'-4"



SECTION A-A
Dimensions at right angles to abutment, except as shown.

