

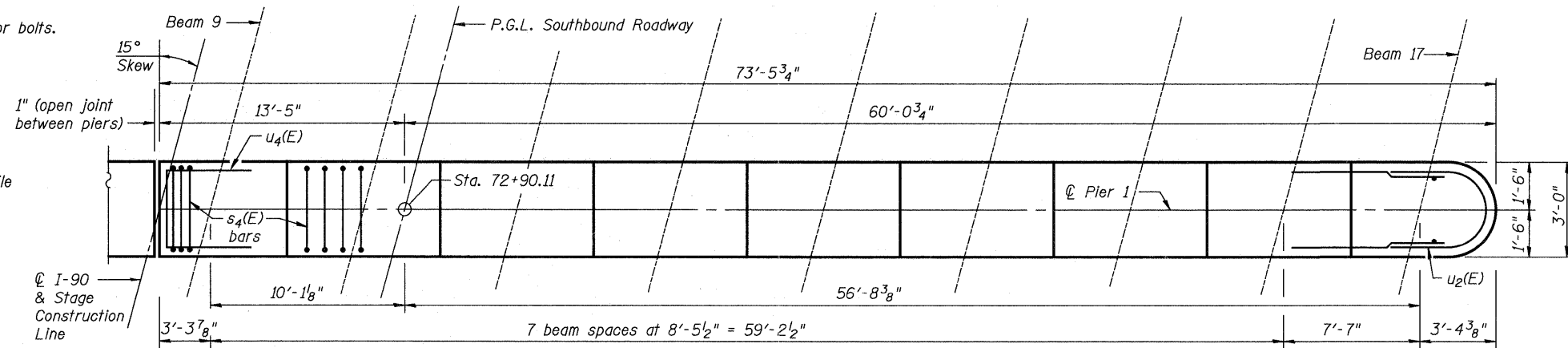
Notes:
 Space reinforcement in cap to miss anchor bolts.
 Pour steps monolithically with cap.
 For details of piles, see sheet 41 of 48.

PILE DATA

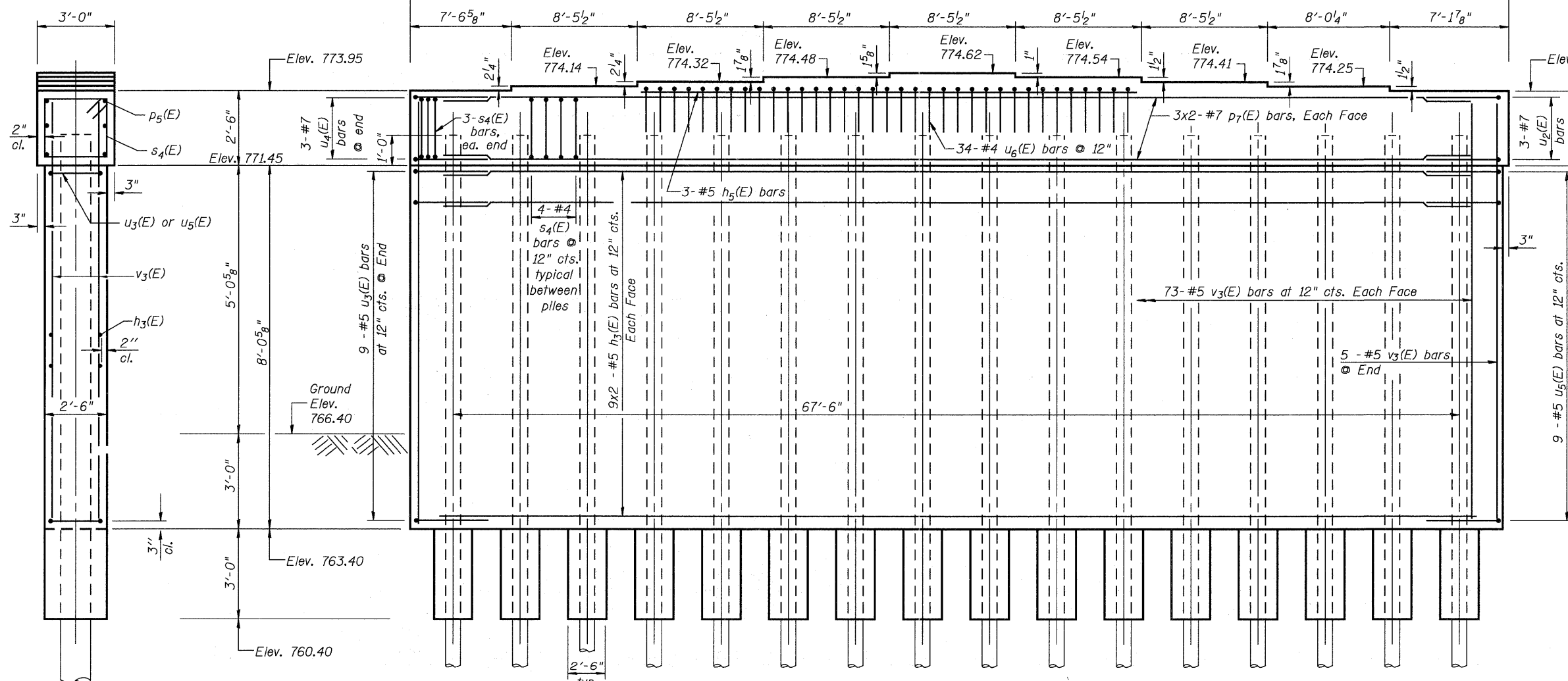
Type: 14" Metal Shell w/ 0.25" walls
 Nominal Required Bearing: 416 Kips/Pile
 Factored Resistance Available: 191 Kips/Pile
 Est. Length: 82 Feet
 No. Production Piles: 16
 No. Test Piles: 0

MINIMUM BAR LAP

#5 bar = 2'-7"
 #7 bar = 4'-2"

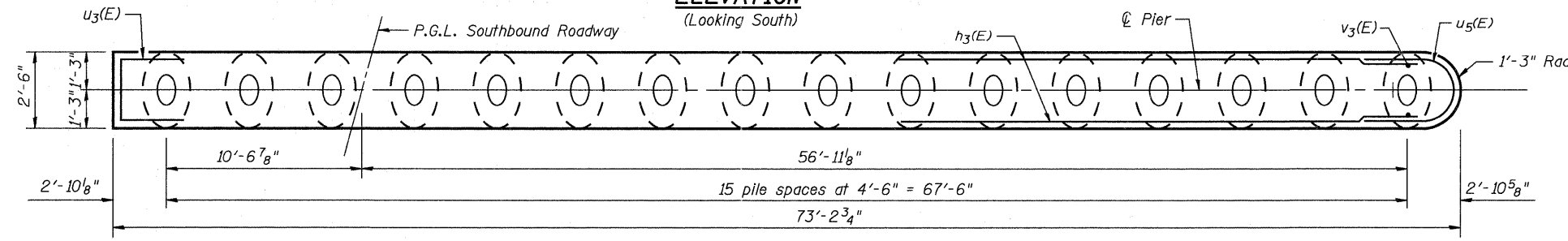


TOP PLAN

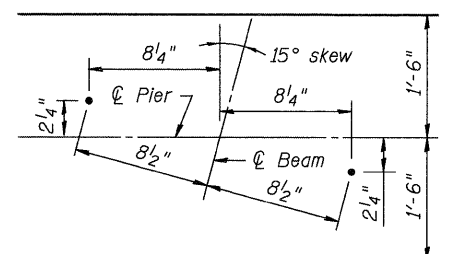


ELEVATION
(Looking South)

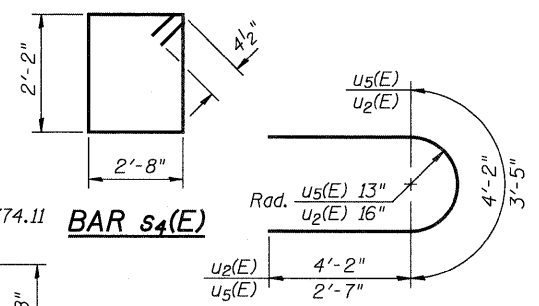
END VIEW



STEM PLAN

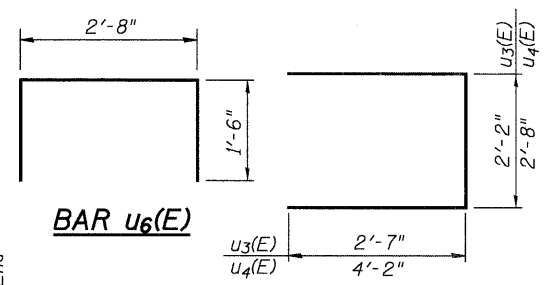


TYPICAL ANCHOR BOLT LOCATION



BAR s4(E)

BAR u5(E) & u2(E)



BAR u6(E)

BAR u3(E) & u4(E)

BILL OF MATERIAL

Bar	No.	Size	Length	Shape
h3(E)	36	#5	37'-3"	—
h5(E)	3	#5	33'-6"	—
p7(E)	12	#7	38'-0"	—
s4(E)	66	#4	10'-5"	□
u2(E)	3	#7	12'-6"	U
u3(E)	9	#5	7'-4"	UUU
u4(E)	3	#7	11'-0"	UUU
u5(E)	9	#5	8'-7"	UUU
u6(E)	34	#4	5'-8"	UUUU
v3(E)	151	#5	10'-2"	—
Structure Excavation			Cu. Yd.	55.8
Concrete Structures			Cu. Yd.	72.1
Reinforcement Bars, Epoxy Coated			Pound	4,918
Furnishing Metal Shell Piles, 14" x 0.250"			Foot	1310
Driving Piles			Foot	1310
Concrete Encasement			Cu. Yd.	6.8

Bars indicated thus 1 x 2-#5 etc. indicates 1 line of bars with 2 lengths per line.



USER NAME =	DESIGNED - JTT	REVISED -
PLOT SCALE =	CHECKED - VAC	REVISED -
PLOT DATE =	DRAWN - JBB	REVISED -
	CHECKED - JTT	REVISED -

STATE OF ILLINOIS
DEPARTMENT OF TRANSPORTATION

PIER 1 SOUTHBOUND DETAILS
STRUCTURE NO. 101-0193
 BRIDGE SHEET NO. 39 OF 48 SHEETS

F.A.I. RTE.	SECTION	COUNTY	TOTAL SHEETS	SHEET NO.
90	(X2-1)R	WINNEBAGO	510	384
				CONTRACT NO. 64C29
ILLINOIS FED. AID PROJECT				