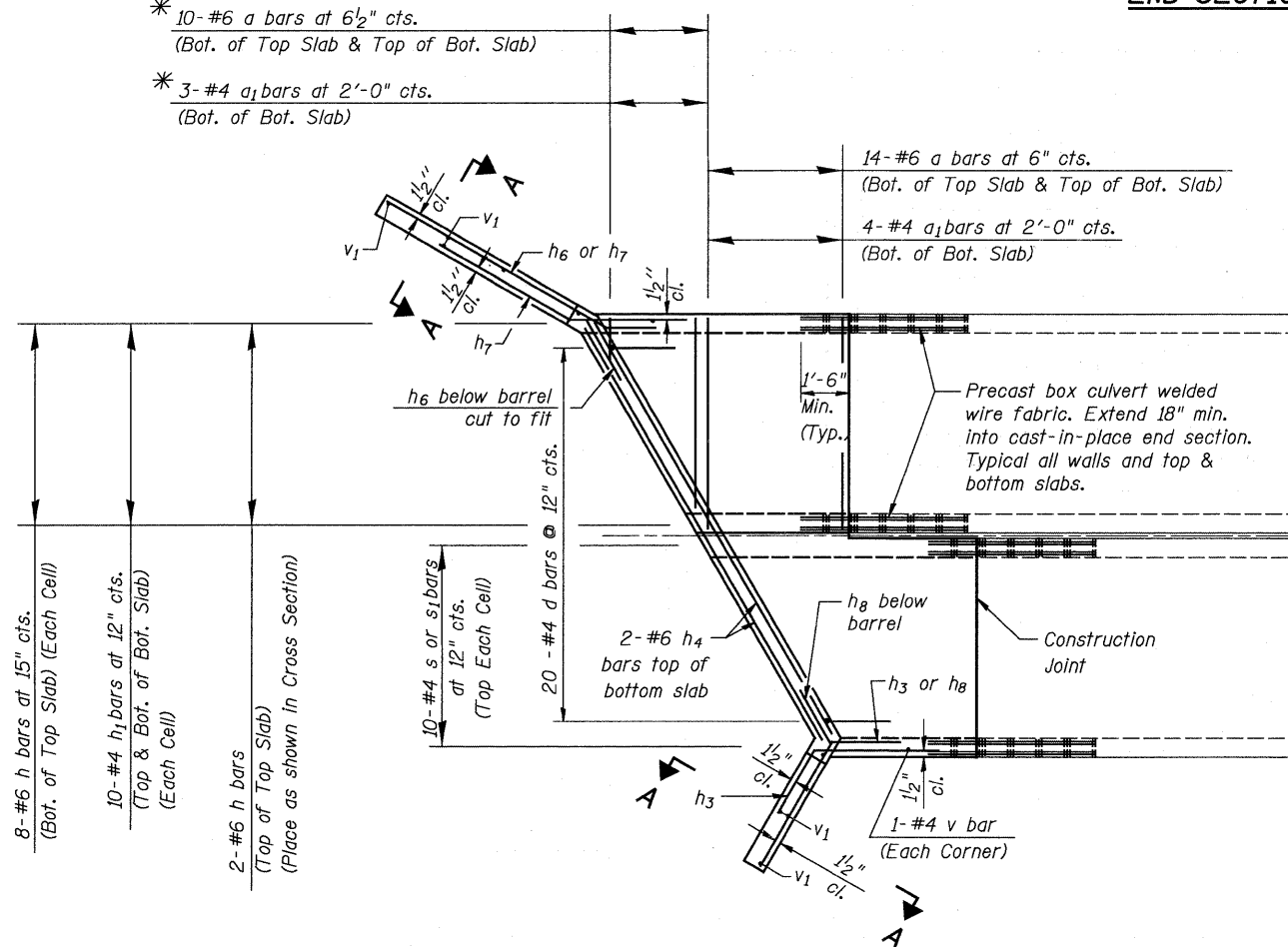
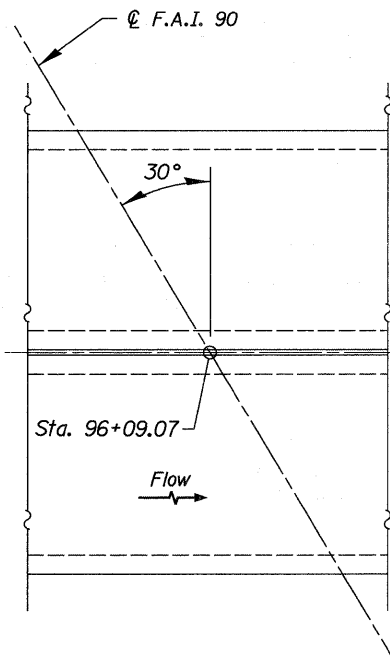


END SECTION DETAIL

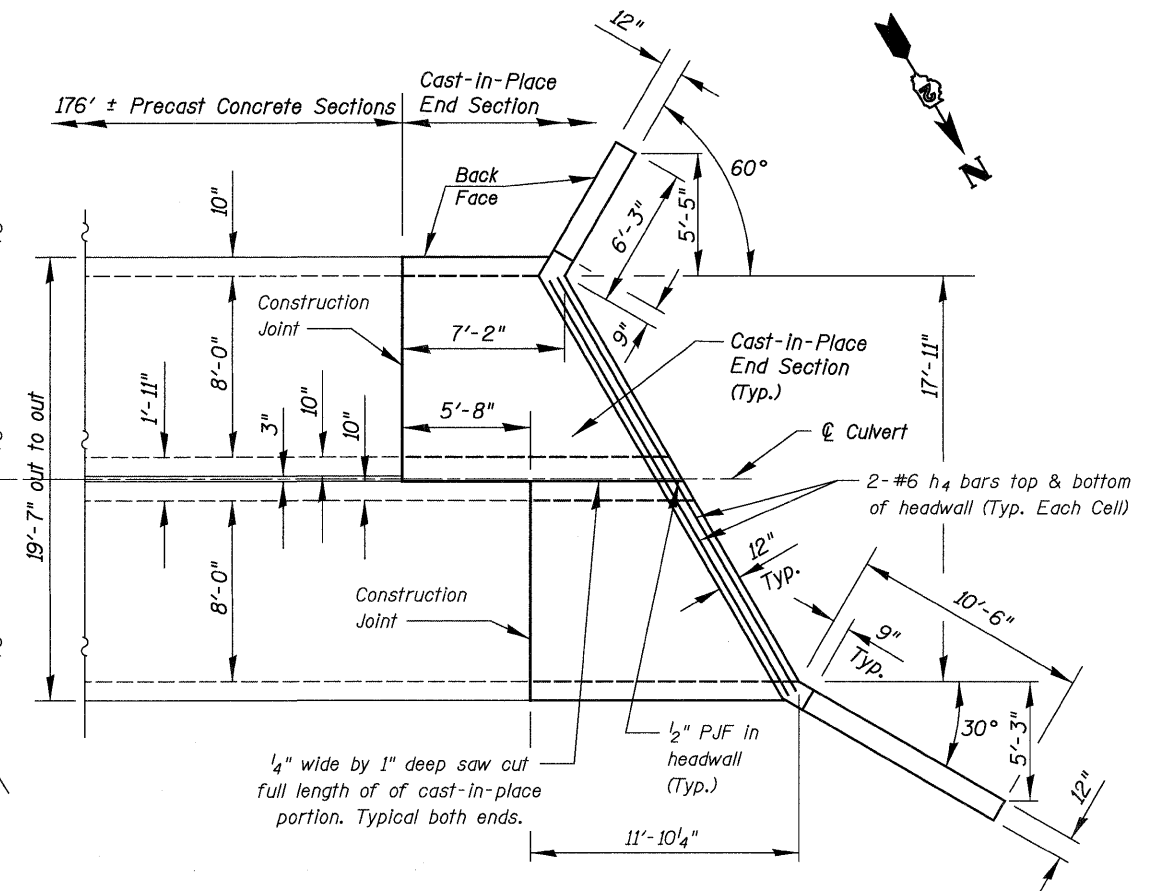
- * 10-#6 a bars at 6 1/2" cts.
(Bot. of Top Slab & Top of Bot. Slab)
- * 3-#4 a1 bars at 2'-0" cts.
(Bot. of Bot. Slab)



SHOWING REINFORCEMENT



PLAN



SHOWING OUTLINES

* a and a1 bars in skew portion of slab shall be ordered full length and cut to fit. Remaining bars to be used in adjacent cell.

Notes:
See Sheet 5 of 7 for section A-A and additional reinforcing information.

(Sheet 1 of 2)