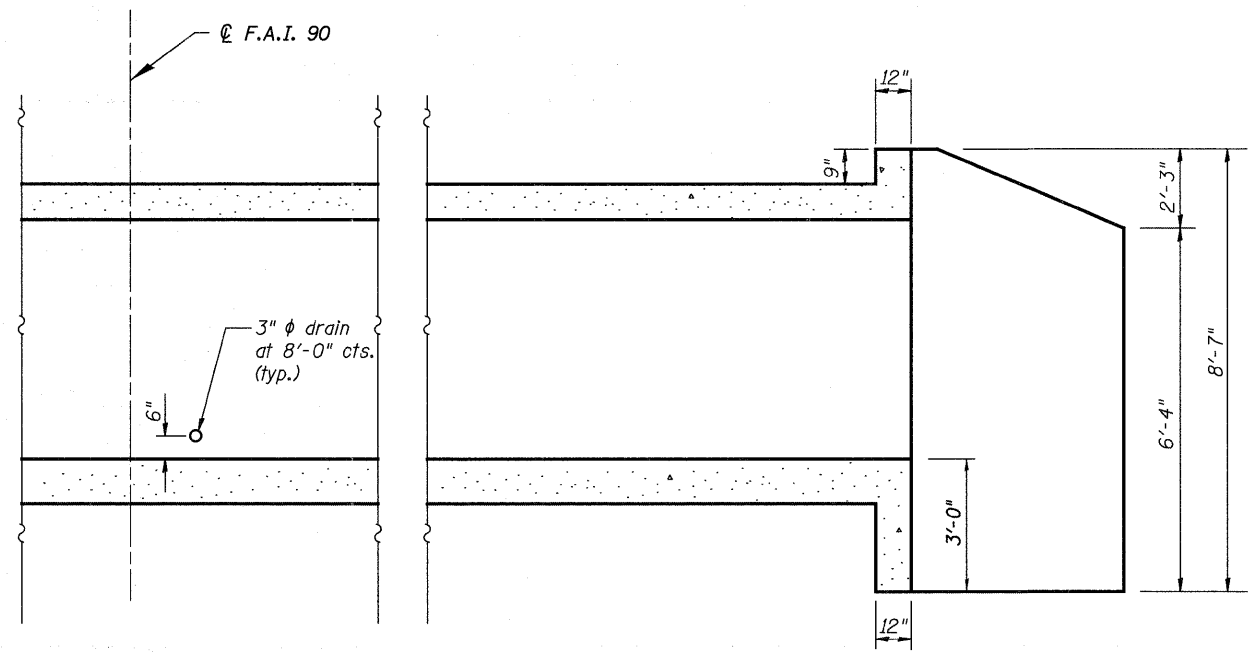
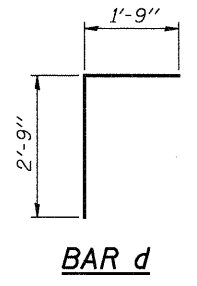


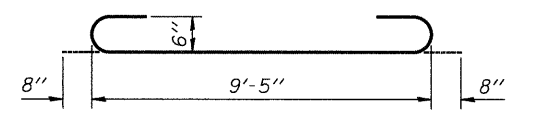
HALF LONG SECTION



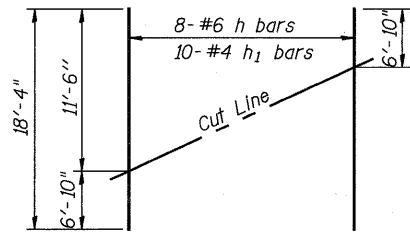
HALF ELEVATION



BAR d

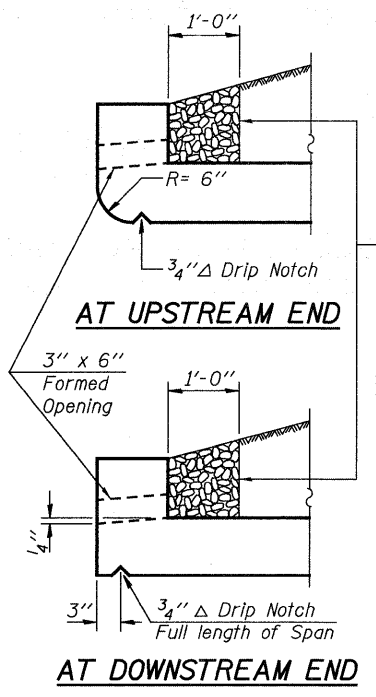


BAR a



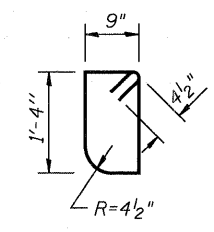
FIELD CUTTING DIAGRAM

Order bars full length. Cut as shown and use remainder of bars in adjacent cell.

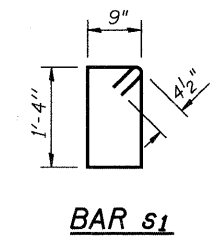


DRAIN DETAIL

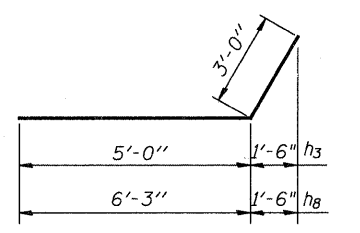
Coarse aggregate full length of both headwalls. To be placed by Grading Contractor. Cost included with Concrete Box Culverts.



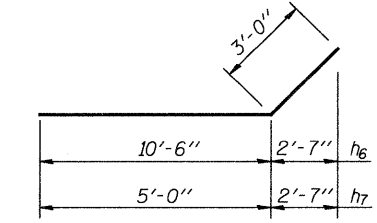
BAR s



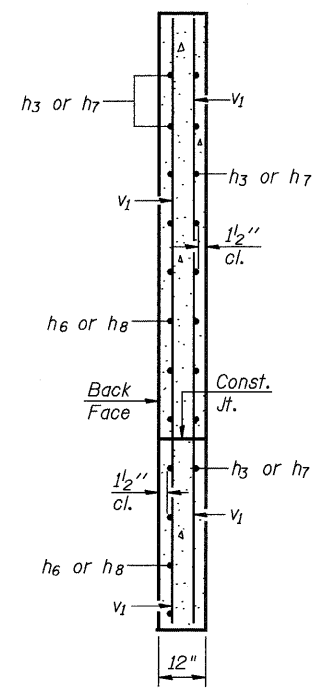
BAR s1



BARS h₃ & h₈



BARS h₆ & h₇



SECTION A-A

BILL OF MATERIAL
(FOR INFORMATION ONLY)

Bar	No.	Size	Length	Shape
a	152	#6	10'-9"	U
a ₁	26	#4	9'-5"	—
d	40	#4	4'-6"	L
h	20	#6	18'-4"	—
h ₁	40	#4	18'-4"	—
h ₂	30	#5	6'-10"	—
h ₃	14	#5	8'-0"	—
h ₄	24	#6	10'-11"	—
h ₅	30	#5	11'-6"	—
h ₆	18	#5	13'-6"	—
h ₇	26	#6	8'-0"	—
h ₈	14	#5	9'-3"	—
s	20	#4	4'-9"	□
s ₁	20	#4	4'-11"	□
v	166	#4	5'-4"	—
v ₁	16	#4	8'-3"	—
Concrete Box Culverts			Cu. Yd.	28.7
Reinforcement Bars			Pound	6370

(Sheet 2 of 2)



USER NAME =	DESIGNED - JTT	REVISED -
PLOT SCALE =	CHECKED - VAC	REVISED -
PLOT DATE =	DRAWN - JBB	REVISED -
	CHECKED - JTT	REVISED -

STATE OF ILLINOIS
DEPARTMENT OF TRANSPORTATION

BOX CULVERT END SECTION DETAILS
STRUCTURE NO. 101-1095

BOX CULVERT SHEET NO. 5 OF 7 SHEETS

F.A.I. RTE. 90	SECTION (X2-1)R	COUNTY WINNEBAGO	TOTAL SHEETS 510	SHEET NO. 398
			CONTRACT NO. 64C29	
ILLINOIS FED. AID PROJECT				