

CURVE VC02
 PI STA. =10+55.88
 $\Delta = 26^\circ 47' 00''$ (RT)
 $D = 15^\circ 00' 00''$
 $R = 381.97'$
 $T = 90.94'$
 $L = 178.56'$
 $E = 10.68'$
 $e = 8.0\%$
 $T.R. = NA$
 $S.E. RUN = 210'$
 $P.C. STA. = 9+64.94$
 $P.T. STA. = 11+43.49$

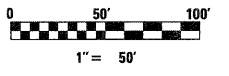
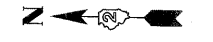
EXIST. CURVE VC03
 PI STA. =12+93.11
 $\Delta = 61^\circ 58' 37''$ (RT)
 $D = 23^\circ 00' 00''$
 $R = 249.11'$
 $T = 149.61'$
 $L = 269.46'$
 $E = 41.48'$
 $e = \text{---}$
 $T.R. = \text{---}$
 $S.E. RUN = \text{---}$
 $P.C. STA. = 11+43.49$
 $P.T. STA. = 14+12.96$

EXIST. CURVE VCEN1
 PI STA. =34+05.30
 $\Delta = 29^\circ 02' 00''$ (RT)
 $D = 12^\circ 30' 00''$
 $R = 458.37'$
 $T = 118.68'$
 $L = 232.27'$
 $E = 15.12'$
 $e = \text{---}$
 $T.R. = \text{---}$
 $S.E. RUN = \text{---}$
 $P.C. STA. = 32+86.62$
 $P.T. STA. = 35+18.88$

LEGEND

- BITUMINOUS OVERLAY:
- 1 1/2" HOT-MIX ASPHALT SURFACE COURSE, MIX "D", N90
1" LEVELING BINDER (MACHINE METHOD), N90
 - 2 1/2" HOT-MIX ASPHALT SURFACE COURSE, MIX "C", N50

SEE SHEET 403 FOR BUTT JOINT
 AND BITUMINOUS TAPER DETAILS



McClure LOCHNER
 Engineering Associates, Inc.
RWA
 Engineering & Architecture, Inc.

USER NAME = .USERNAME.	DESIGNED - CGC	REVISED -
PLOT SCALE = 50.0000' / IN.	DRAWN - CGC	REVISED -
PLOT DATE = 10/19/2011	CHECKED - AM	REVISED -
	DATE - 10/14/2011	REVISED -

**STATE OF ILLINOIS
 DEPARTMENT OF TRANSPORTATION**

**VISITOR CENTER
 OVERLAY DETAIL**

SCALE: 1"=50' SHEET NO. OF SHEETS STA. TO STA.

F.A.I. RTE.	SECTION	COUNTY	TOTAL SHEETS	SHEET NO.
90	(X2-1)R	WINNEBAGO	510	401
CONTRACT NO. 64C29				
ILLINOIS FED. AID PROJECT				