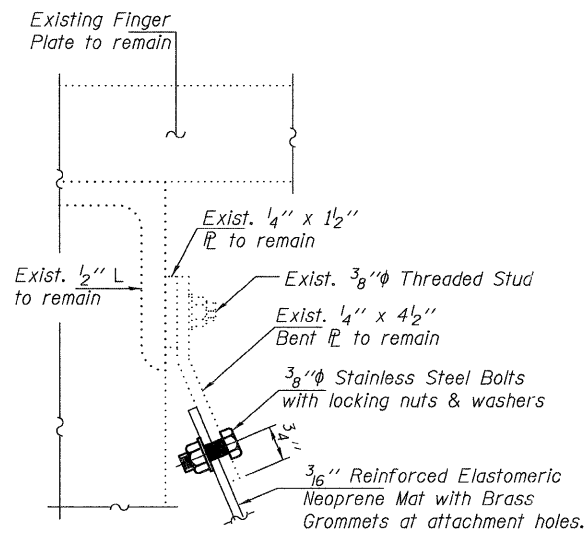
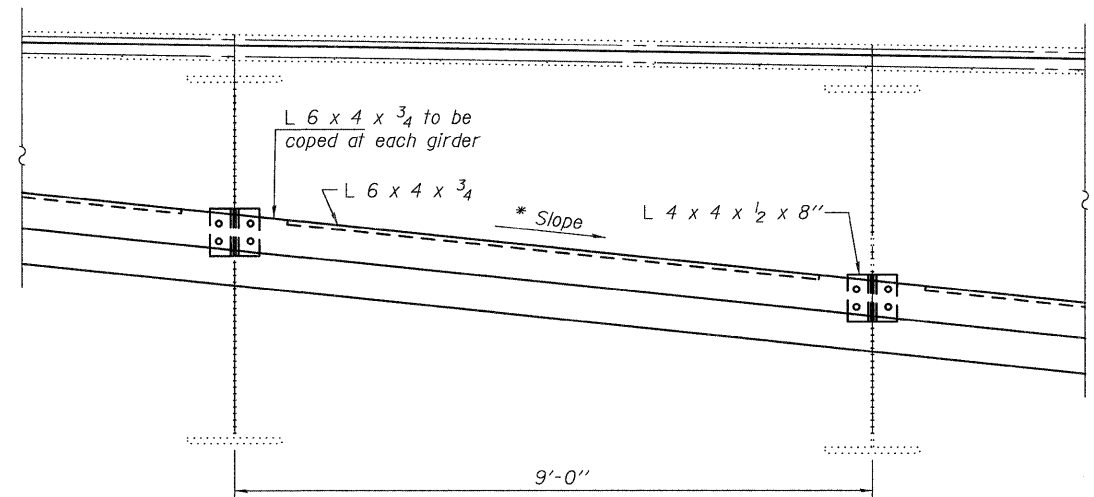


TYPICAL SECTION THRU TROUGH



DETAIL A

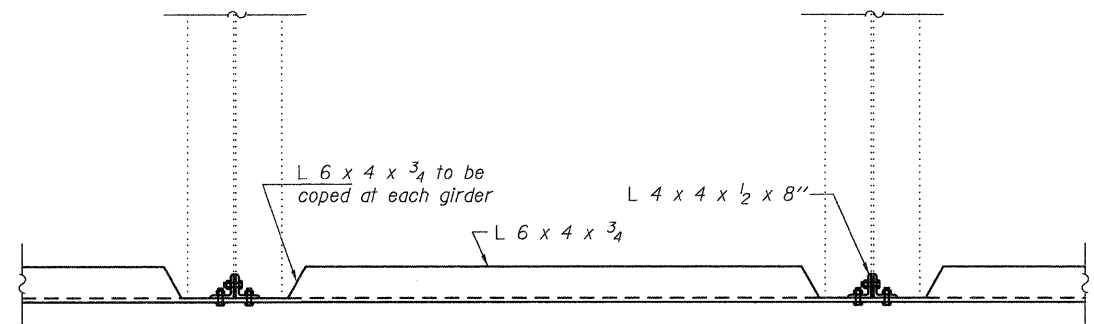


TROUGH DETAILS - PARTIAL ELEVATION

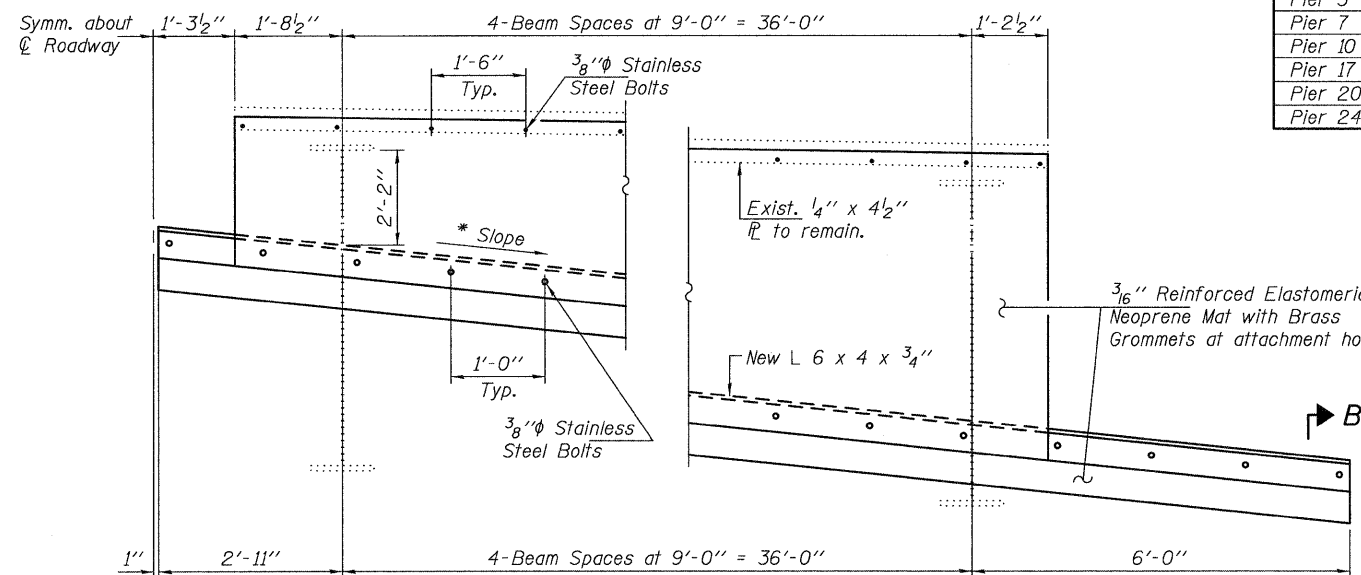
* See table for slope dimension.

SLOPE TABLE

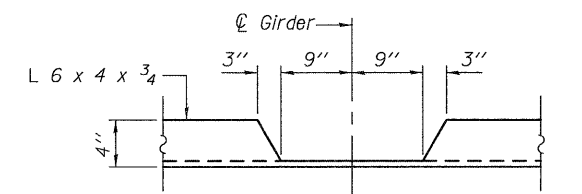
Location	Slope
Pier 3	0.875"/ft.
Pier 7	1.25"/ft.
Pier 10	1.50"/ft.
Pier 17	1.50"/ft.
Pier 20	1.25"/ft.
Pier 24	0.875"/ft.



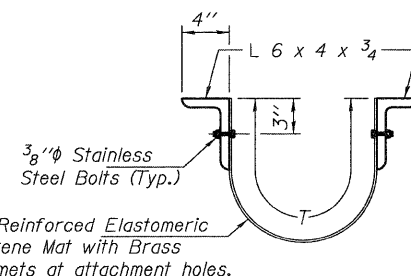
TROUGH DETAILS - PARTIAL PLAN



SECTION A-A



TROUGH DETAILS - COPE DETAIL



SECTION B-B

Notes:
 The Contractor shall remove the existing neoprene mats and the lower existing angles from the steel girders at each pier as noted on this sheet. All debris laying on top of the girder flanges (within 8 feet of the girder ends), angles, and on top of the pier cap, shall be removed by the use of brooms and high pressure water. The cost to remove the existing neoprene mats and the existing angles, and to remove the debris, is included with the pay item Fabric Reinforced Elastomeric Trough.
 The reinforced elastomeric neoprene mat, all associated hardware angles, and plates are included in the pay item "Fabric Reinforced Elastomeric Trough."
 All bolts, other associated hardware, angles, and plates shall be hot dipped galvanized. The hot dipped galvanizing requirement is included in the pay item Fabric Reinforced Elastomeric Trough.

BILL OF MATERIAL

ITEM	UNIT	QUANTITY
Fabric Reinforced Elastomeric Trough	Foot	540