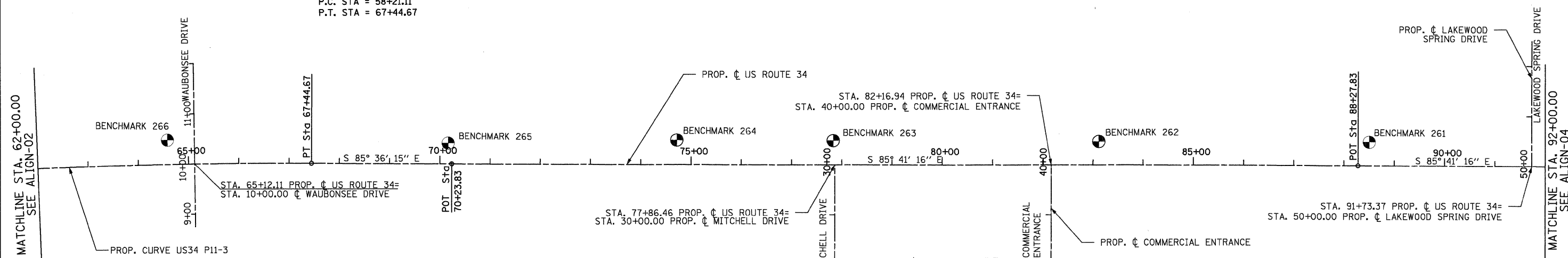




PROP. CURVE US34_P11-3
 PI STA. = 62+83.12
 $\Delta = 4^\circ 23' 45''$ (RT)
 $D = 0^\circ 28' 33''$
 $R = 12,038.10'$
 $T = 462.01'$
 $L = 923.56'$
 $E = 8.86'$
 P.C. STA = 58+21.11
 P.T. STA = 67+44.67



CURVE US34_P11-3		NORTHING	EASTING
PI	STA. 62+83.12	N 1,819,819.11	E 936,343.88
PC	STA. 58+21.11	N 1,819,819.11	E 935,881.87
PT	STA. 67+44.67	N 1,819,783.70	E 936,804.53
C.C.		N 1,807,781.01	E 935,881.87
POT	STA. 70+23.83	N 1,819,762.30	E 937,082.86
POT	STA. 88+27.83	N 1,819,626.65	E 938,881.76

BENCHMARK DESCRIPTIONS

BENCHMARK 261	RAILROAD SPIKE IN POWER POLE, NORTH SIDE US 34 AT LAKEWOOD SPRINGS. STA. 88+50.08, 47.77' LT' EL. 648.760
BENCHMARK 262	RAILROAD SPIKE IN POWER POLE W/TRANSFORMER, NORTH SIDE US 34 STA. 83+11.60, 47.36' LT' EL. 647.299
BENCHMARK 263	RAILROAD SPIKE IN POWER POLE, NORTH SIDE US 34 AT MITCHEL ROAD STA. 77+83.01, 48.87' LT EL. 646.175
BENCHMARK 264	RAILROAD SPIKE IN POWER POLE, NORTH SIDE US 34 STA. 74+71.59, 49.32' LT EL. 646.778
BENCHMARK 265	RAILROAD SPIKE IN POWER POLE, NORTH SIDE US 34 STA. 70+16.43, 41.89' LT EL. 647.018
BENCHMARK 266	RAILROAD SPIKE IN POWER POLE, NORTH SIDE US 34 STA. 64+58.65, 49.16' LT EL. 650.256



FILE NAME = 0366985-shr-align03.dgn	DESIGNED - MMS	REVISED -
PLOT SCALE = 100'	DRAWN - MMS	REVISED -
PLOT DATE = 19-AUG-2011 08:11	CHECKED - KJB	REVISED -
	DATE - 08-18-2011	REVISED -

**STATE OF ILLINOIS
DEPARTMENT OF TRANSPORTATION**

ALIGNMENT, TIES, AND BENCHMARKS

SCALE: 1" = 100' ALIGN - 3 OF 5 STA. 62+00 TO STA. 92+00

F.A.P. RTE.	SECTION	COUNTY	TOTAL SHEETS	SHEET NO.
591	13R-2;14R-1 & BR-1(D);15R-1	KENDALL	429	43
FINAL SUBMITTAL			CONTRACT NO. 66985	
[ILLINOIS] FED. AID PROJECT				