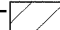


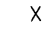
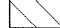

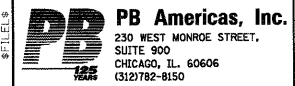
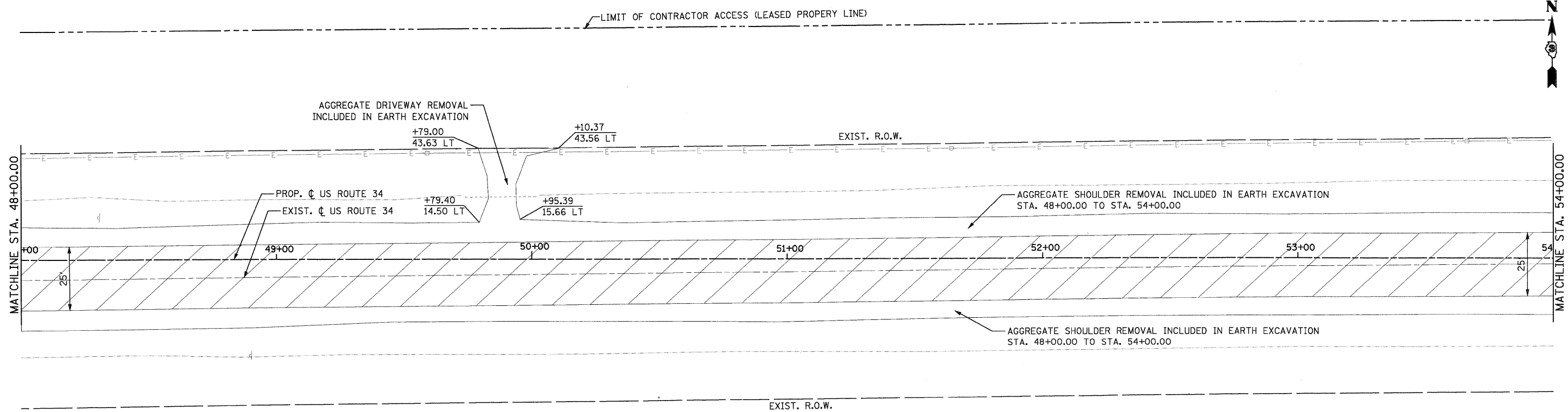
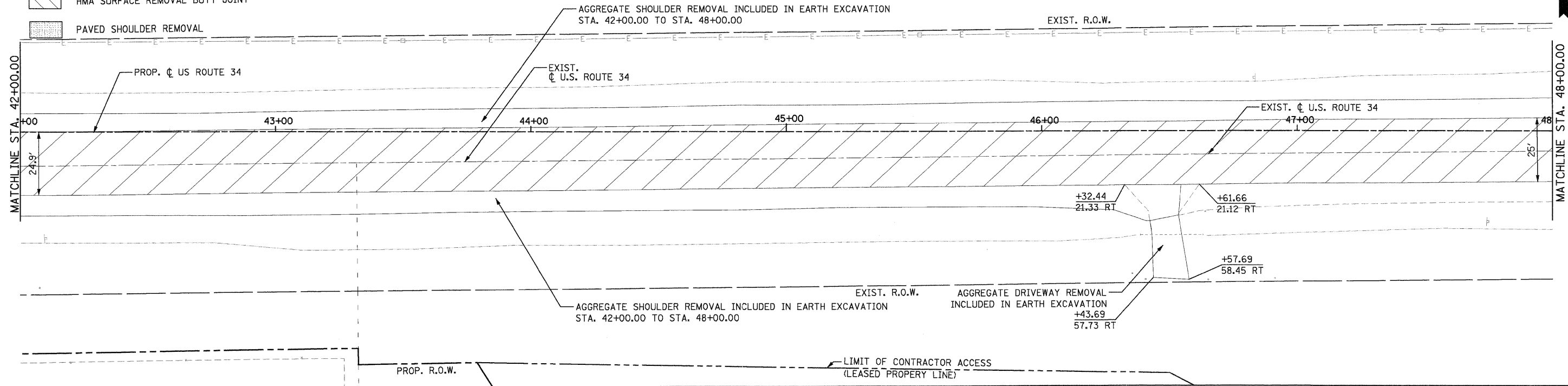


LEGEND:

-  PAVEMENT REMOVAL
-  DRIVEWAY PAVEMENT REMOVAL
-  SIDEWALK REMOVAL
-  TREE REMOVAL
-  HMA SURFACE REMOVAL BUTT JOINT
-  PAVED SHOULDER REMOVAL

PROP. R.O.W.

LIMIT OF CONTRACTOR ACCESS (LEASED PROPERTY LINE)



FILE NAME = D366785-ahh-rem24.dgn
 PLOT SCALE = 20
 PLOT DATE = 19-AUG-2011 08:12

DESIGNED - MMS
 DRAWN - MMS
 CHECKED - KJB
 DATE - 08-18-2011

REVISED -
 REVISED -
 REVISED -
 REVISED -

**STATE OF ILLINOIS
 DEPARTMENT OF TRANSPORTATION**

**EXISTING CONDITION AND REMOVAL PLAN
 US ROUTE 34**

SCALE: 1" = 50' REM - 4 OF 11 STA. 42+00 TO STA. 54+00

F.A.P. RTE.	SECTION	COUNTY	TOTAL SHEETS	SHEET NO.
591	13R-2+14R-1 & BR-1(1)+15R-1	KENDALL	429	50
FINAL SUBMITTAL			CONTRACT NO. 66985	
[ILLINOIS] FED. AID PROJECT				