

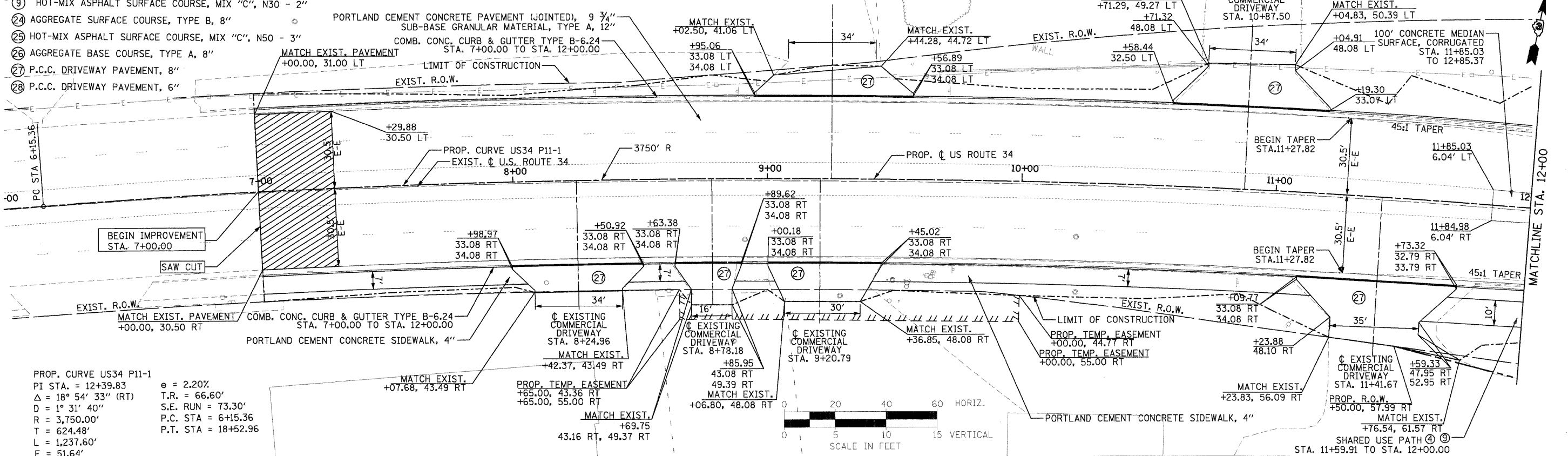
PLAN	SURVEYED	DATE
	PLOTTED	
	CHECKED	
	BY	
	NO.	

PROFILE	SURVEYED	DATE
	PLOTTED	
	CHECKED	
	BY	
	NO.	

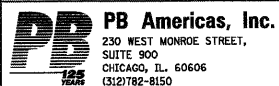
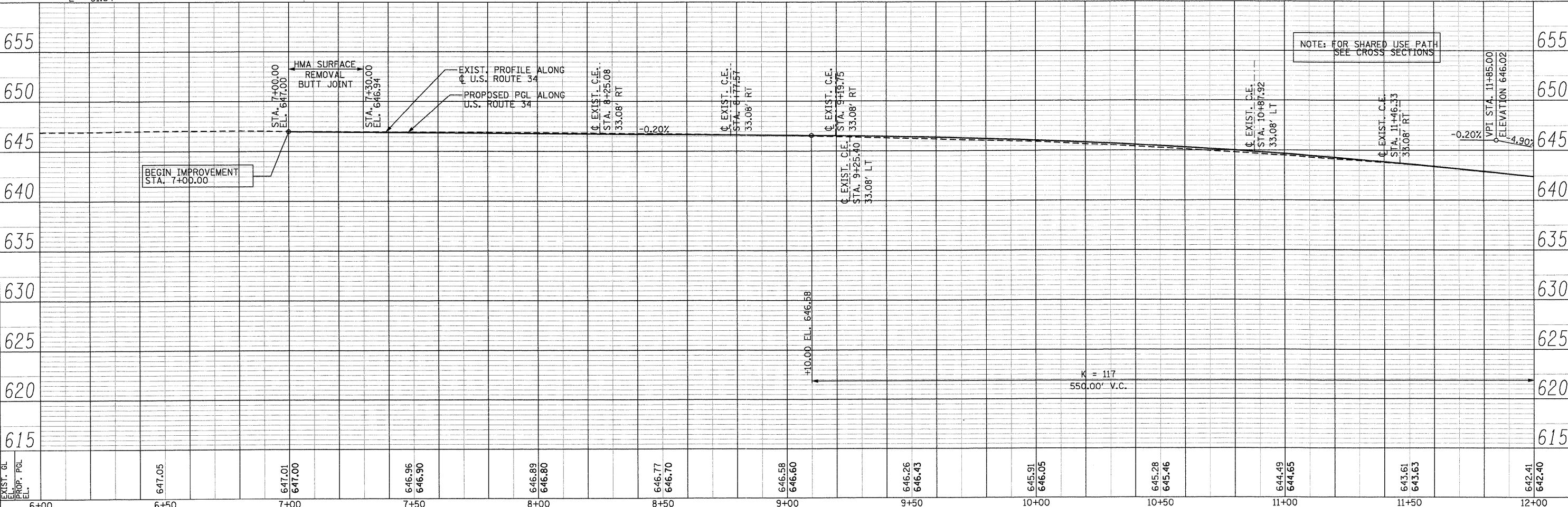
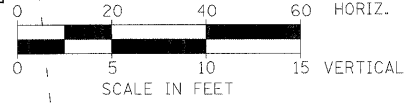
**LEGEND:**

- ④ AGGREGATE BASE COURSE, TYPE A, 6"
- ⑨ HOT-MIX ASPHALT SURFACE COURSE, MIX "C", N30 - 2"
- ②4 AGGREGATE SURFACE COURSE, TYPE B, 8"
- ②5 HOT-MIX ASPHALT SURFACE COURSE, MIX "C", N50 - 3"
- ②6 AGGREGATE BASE COURSE, TYPE A, 8"
- ②7 P.C.C. DRIVEWAY PAVEMENT, 8"
- ②8 P.C.C. DRIVEWAY PAVEMENT, 6"

- DEPRESSED CURB
- ▨ HMA SURFACE REMOVAL BUTT



PROP. CURVE US34 P11-1  
 PI STA. = 12+39.83    e = 2.20%  
 Δ = 18° 54' 33" (RT)    T.R. = 66.60'  
 D = 1° 31' 40"    S.E. RUN = 73.30'  
 R = 3,750.00'    P.C. STA = 6+15.36  
 T = 624.48'    P.T. STA = 18+52.96  
 L = 1,237.60'  
 E = 51.64'



FILE NAME = 0366785-shr-lp1nprf-rural.dgn	DESIGNED - MMS	REVISED -
PLOT SCALE = 20	DRAWN - MMS	REVISED -
PLOT DATE = 19-AUG-2011 08:14	CHECKED - KJB	REVISED -
	DATE - 08-18-2011	REVISED -

**STATE OF ILLINOIS  
DEPARTMENT OF TRANSPORTATION**

**U.S. 34 PLAN & PROFILE**

SCALE: 1"=20' Horiz    PNP - 1 OF 27    STA. 6+00 TO STA. 12+00

F.A.P. RTE.	SECTION	COUNTY	TOTAL SHEETS	SHEET NO.
591	13R-214R-1 & BR-1015R-1	KENDALL	429	58
FINAL SUBMITTAL			CONTRACT NO. 66985	
ILLINOIS FED. AID PROJECT				