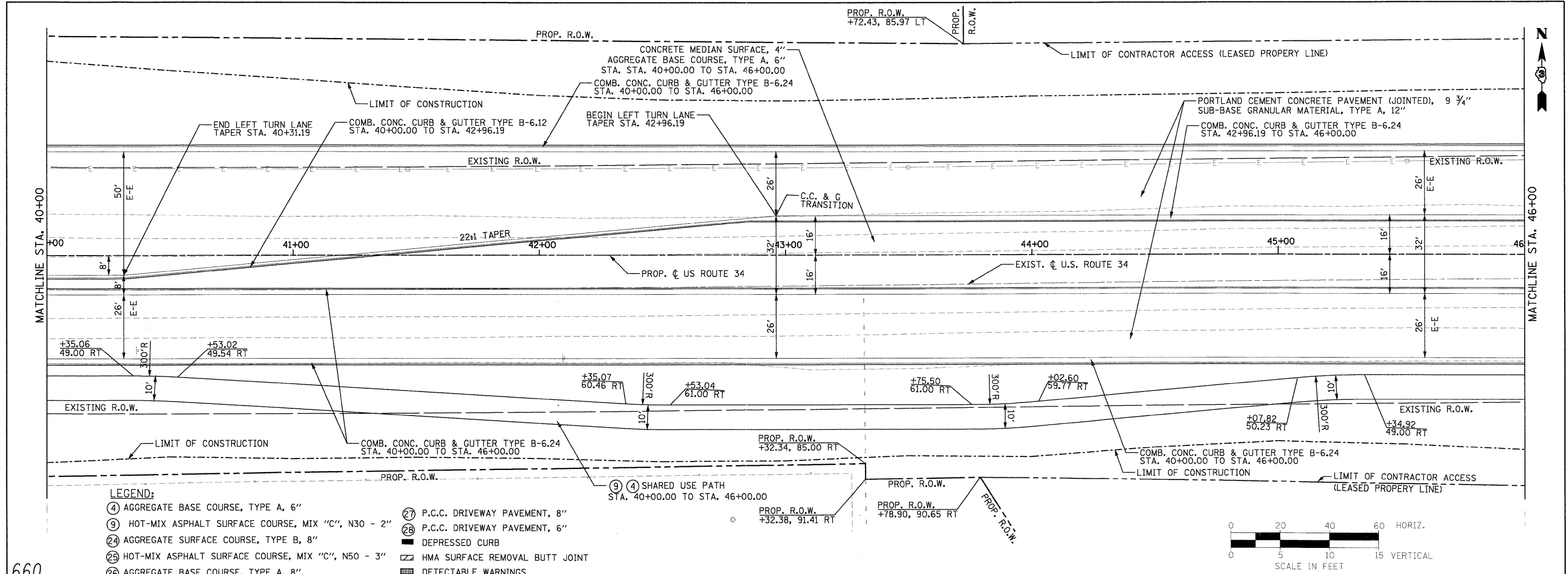
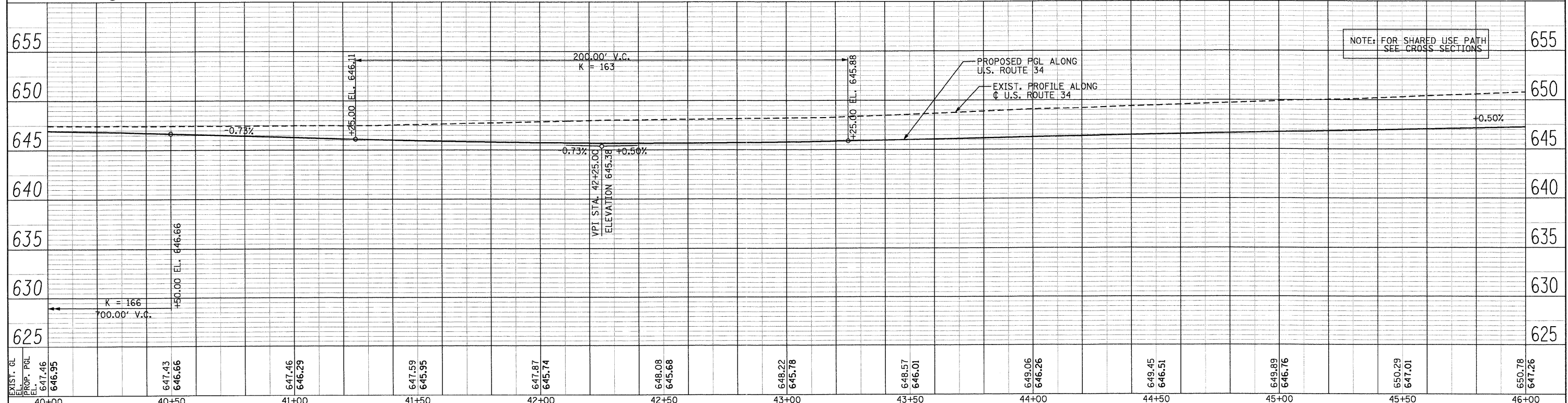
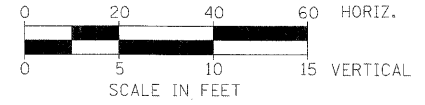


PLAN	SURVEYED	DATE
	PLOTTED	
	CHECKED	
	BY	
	NO.	

PROFILE	SURVEYED	DATE
	PLOTTED	
	CHECKED	
	BY	
	NO.	



- LEGEND:**
- ④ AGGREGATE BASE COURSE, TYPE A, 6"
 - ⑨ HOT-MIX ASPHALT SURFACE COURSE, MIX "C", N30 - 2"
 - ②④ AGGREGATE SURFACE COURSE, TYPE B, 8"
 - ②⑤ HOT-MIX ASPHALT SURFACE COURSE, MIX "C", N50 - 3"
 - ②⑥ AGGREGATE BASE COURSE, TYPE A, 8"
 - ②⑦ P.C.C. DRIVEWAY PAVEMENT, 8"
 - ②⑧ P.C.C. DRIVEWAY PAVEMENT, 6"
 - DEPRESSED CURB
 - ▨ HMA SURFACE REMOVAL BUTT JOINT
 - DETECTABLE WARNINGS



PB Americas, Inc. 230 WEST MONROE STREET, SUITE 900 CHICAGO, IL 60606 (312)782-8150	FILE NAME = 0366785-sht-7.plnprf.dgn PLOT SCALE = 20' PLOT DATE = 19-AUG-2011 08:14	DESIGNED - MMS DRAWN - MMS CHECKED - KJB DATE - 08-18-2011	REVISED - REVISED - REVISED - REVISED -	STATE OF ILLINOIS DEPARTMENT OF TRANSPORTATION		U.S. 34 PLAN & PROFILE		F.A.P. RTE. 591 SECTION 13R-2;14R-1 & BR-1(1);15R-1 COUNTY KENDALL TOTAL SHEETS 429 SHEET NO. 68
	SCALE: 1"=20' Horiz PNP - 7 OF 27 STA. 40+00 TO STA. 46+00				CONTRACT NO. 66985 ILLINOIS FED. AID PROJECT			