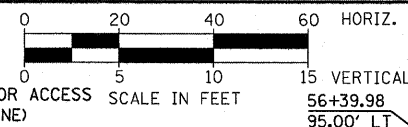


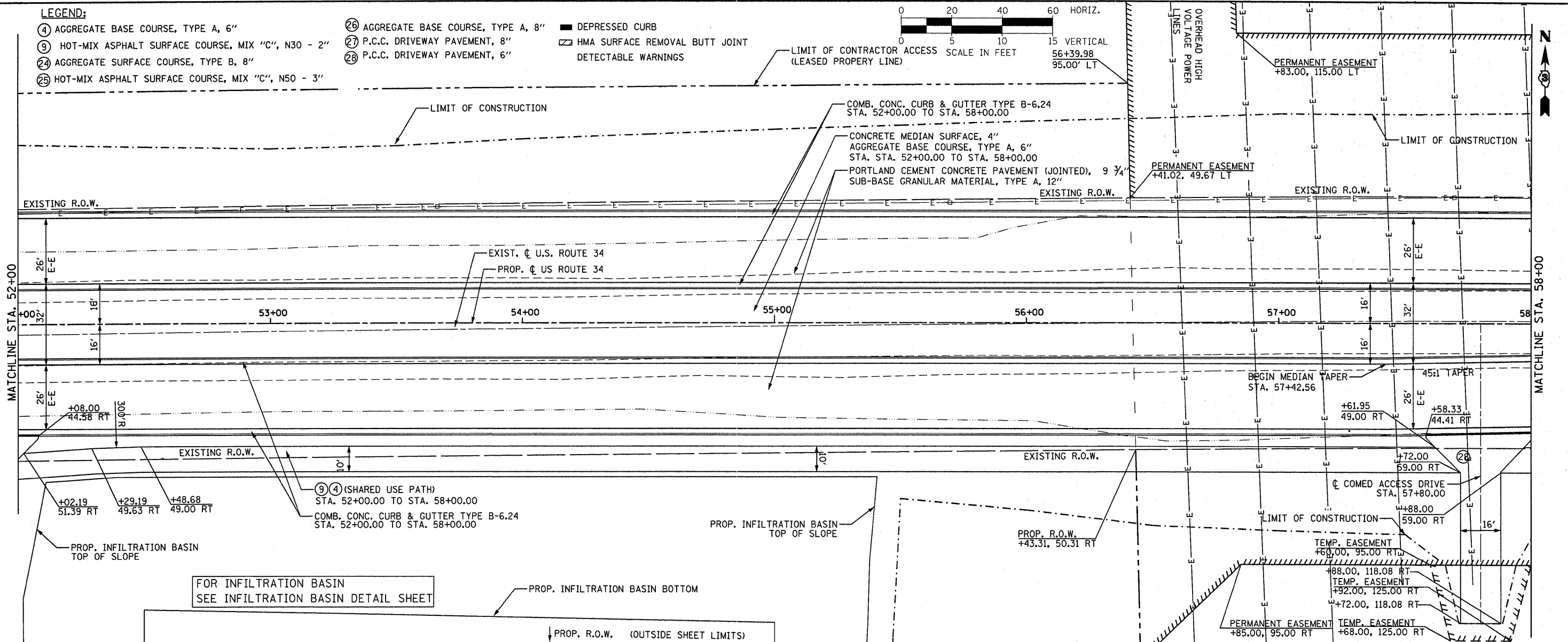
LEGEND:

- ④ AGGREGATE BASE COURSE, TYPE A, 6"
- ⑨ HOT-MIX ASPHALT SURFACE COURSE, MIX "C", N30 - 2"
- ②④ AGGREGATE SURFACE COURSE, TYPE B, 8"
- ②⑤ HOT-MIX ASPHALT SURFACE COURSE, MIX "C", N50 - 3"
- ②⑥ AGGREGATE BASE COURSE, TYPE A, 8"
- ②⑦ P.C.C. DRIVEWAY PAVEMENT, 8"
- ②⑧ P.C.C. DRIVEWAY PAVEMENT, 6"
- DEPRESSED CURB
- ▨ HMA SURFACE REMOVAL BUTT JOINT
- ▭ DETECTABLE WARNINGS



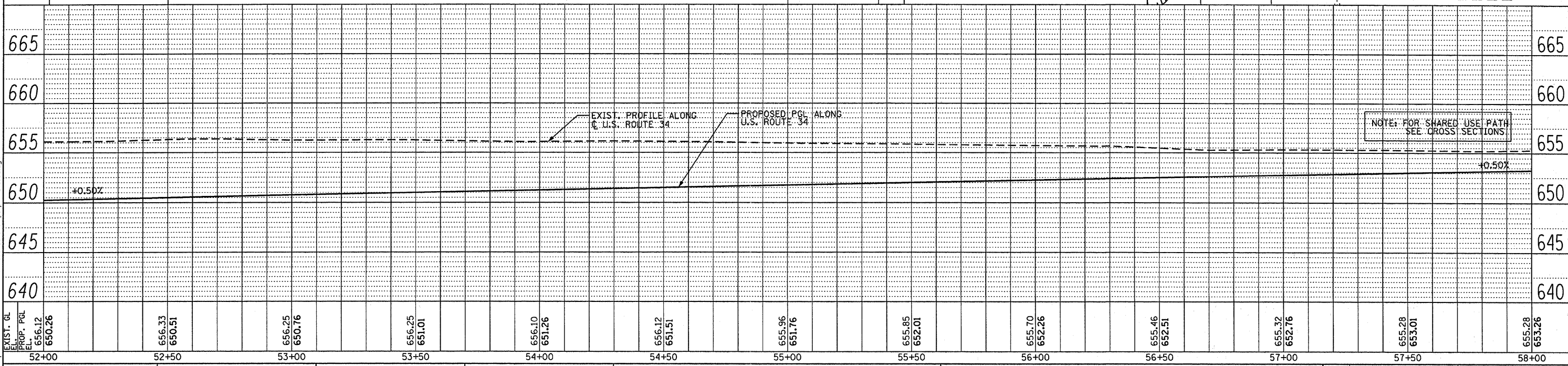
DATE	
BY	
SURVEYED	
ALIGNED	
NOTED	
STRUCTURE	
NOTATIONS	
CHRO	

DATE	
BY	
SURVEYED	
GRADES	
CHECKED	
BLM	
NOTED	
STRUCTURE	
NOTATIONS	
CHRO	



FOR INFILTRATION BASIN
SEE INFILTRATION BASIN DETAIL SHEET

NOTE: FOR SHARED USE PATH
SEE CROSS SECTIONS



FILE NAME = duncanbd	DESIGNED - MMS	REVISED - BDD 11/21/2011
PLOT SCALE = 20.0000' / 1"	DRAWN - MMS	REVISED -
PLOT DATE = 11/22/2011	CHECKED - MMS	REVISED -
	DATE - 08-18-2011	REVISED -

**STATE OF ILLINOIS
DEPARTMENT OF TRANSPORTATION**

U.S. 34 PLAN & PROFILE

SCALE: 1"=20' Horiz PNP - 9 OF 27 STA. 52+00 TO STA. 58+00

F.A.P. RTE.	SECTION	COUNTY	TOTAL SHEETS	SHEET NO.
591	13R-2;14R-1 & BR-(1);15R-1	KENDALL	429	70
FINAL SUBMITTAL		CONTRACT NO. 66985		
ILLINOIS FED. AID PROJECT				