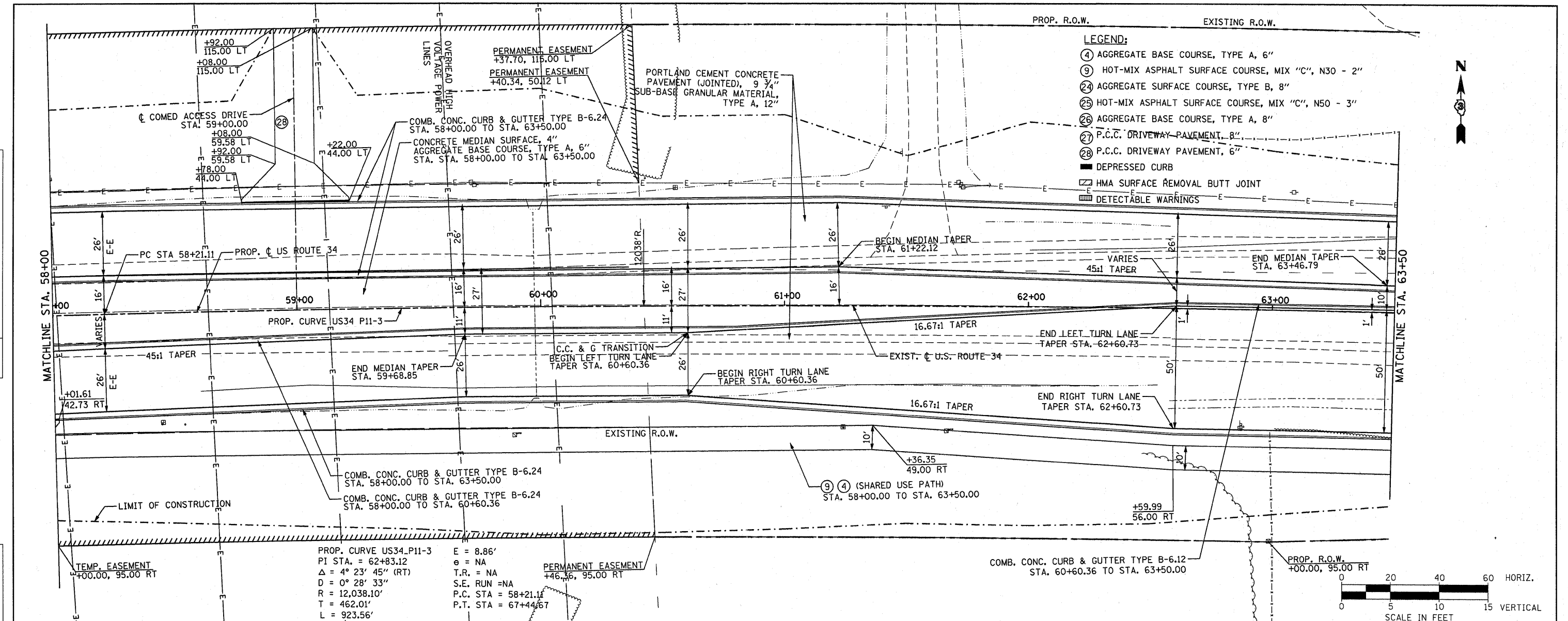
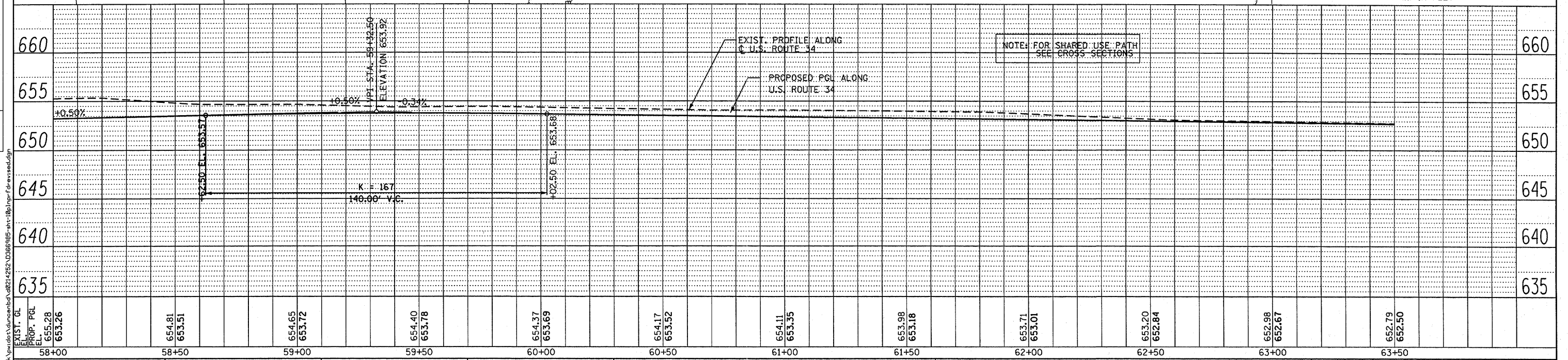
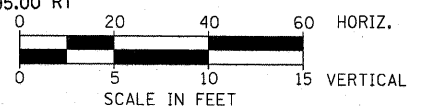


DATE	
BY	
PLAN	
NO.	
DATE	
BY	
PROFILE	
NO.	

DATE	
BY	
PROFILE	
NO.	



PROP. CURVE US34_P11-3
 PI STA. = 62+83.12
 $\Delta = 4^\circ 23' 45''$ (RT)
 $D = 0^\circ 28' 33''$
 $R = 12,038.10'$
 $T = 462.01'$
 $L = 923.56'$
 $E = 8.86'$
 $\phi = NA$
 $T.R. = NA$
 $S.E. RUN = NA$
 $P.C. STA = 58+21.11$
 $P.T. STA = 67+44.67$



PB Americas, Inc.
 230 WEST MONROE STREET,
 SUITE 900
 CHICAGO, IL 60606
 (312)782-9150

FILE NAME = dunoebnd	DESIGNED - MMS	REVISED - BDD 11/21/2011
PLOT SCALE = 20.0000' / in.	DRAWN - MMS	REVISED -
PLOT DATE = 11/22/2011	CHECKED - KJB	REVISED -
	DATE - 08-18-2011	REVISED -

STATE OF ILLINOIS
DEPARTMENT OF TRANSPORTATION

U.S. 34 PLAN & PROFILE

SCALE: 1" = 20' Horiz
 PNP - 10 OF 27
 STA. 58+00 TO STA. 63+50

F.A.P. RTE.	SECTION	COUNTY	TOTAL SHEETS	SHEET NO.
591	13R-214R-1 & BR-1(1);15R-1	KENDALL	429	71
FINAL SUBMITTAL			CONTRACT NO. 66985	
ILLINOIS FED. AID PROJECT				