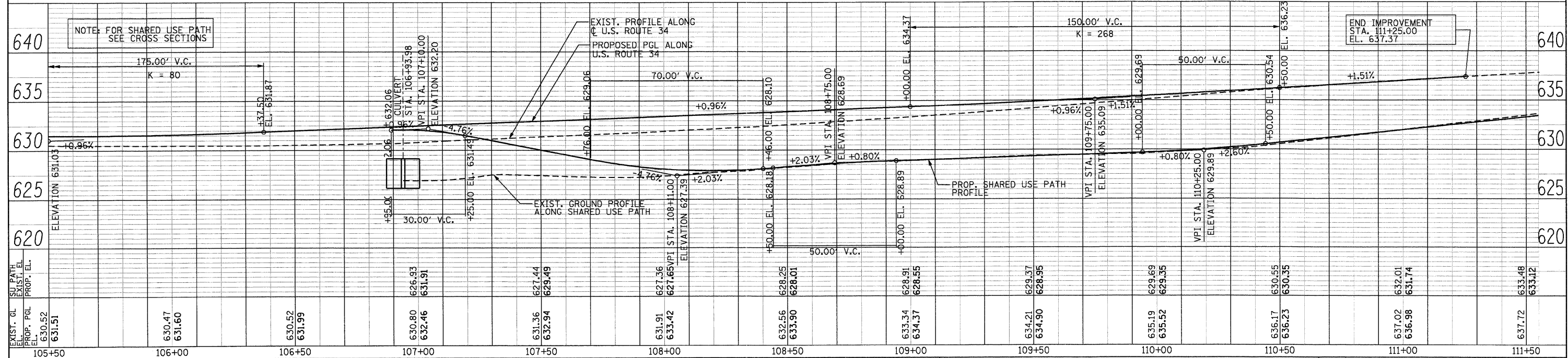
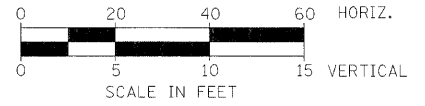
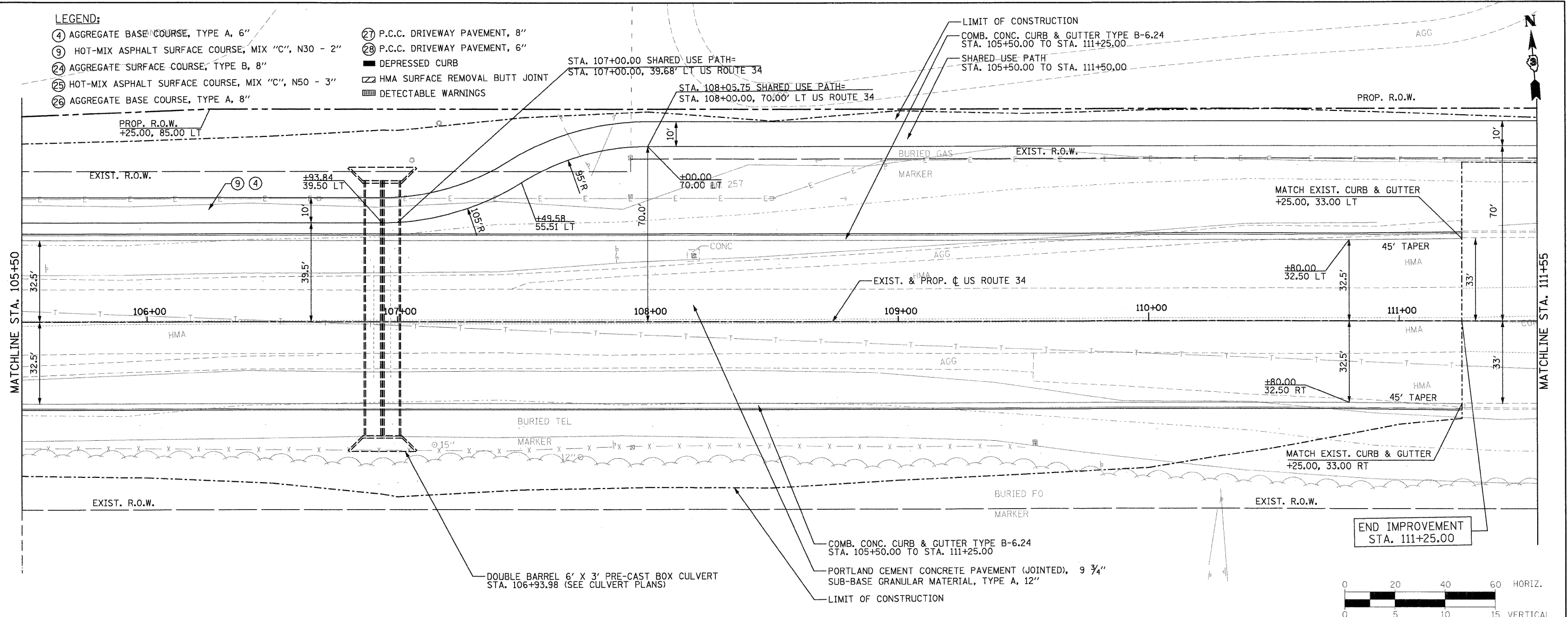


PLAN	SURVEYED	DATE
	PLOTTED	
	NOTED	
	BY	
	NO. OF HMA CHECKED	
	CADD FILE NAME	
	NO.	

PROFILE	SURVEYED	DATE
	PLOTTED	
	NOTED	
	BY	
	NO. OF HMA CHECKED	
	STRUCTURE NOTATIONS CIPK	
	NO.	

LEGEND:

- ④ AGGREGATE BASE COURSE, TYPE A, 6"
- ⑨ HOT-MIX ASPHALT SURFACE COURSE, MIX "C", N30 - 2"
- ②④ AGGREGATE SURFACE COURSE, TYPE B, 8"
- ②⑤ HOT-MIX ASPHALT SURFACE COURSE, MIX "C", N50 - 3"
- ②⑥ AGGREGATE BASE COURSE, TYPE A, 8"
- ②⑦ P.C.C. DRIVEWAY PAVEMENT, 8"
- ②⑧ P.C.C. DRIVEWAY PAVEMENT, 6"
- DEPRESSED CURB
- ▨ HMA SURFACE REMOVAL BUTT JOINT
- ▨ DETECTABLE WARNINGS



PB Americas, Inc.
 230 WEST MONROE STREET,
 SUITE 900
 CHICAGO, IL 60606
 (312) 782-8150

FILE NAME = D366985-sht-18p.inprf.dgn
 DESIGNED - MMS
 DRAWN - MMS
 CHECKED - KJB
 DATE = 08-18-2011

REVISIONS
 REVISIONS
 REVISIONS
 REVISIONS

**STATE OF ILLINOIS
 DEPARTMENT OF TRANSPORTATION**

U.S. 34 PLAN & PROFILE

SCALE: 1"=20' Horiz
 PNP - 18 OF 27
 STA. 105+50 TO STA. 111+50

F.A.P. RTE.	SECTION	COUNTY	TOTAL SHEETS	SHEET NO.
591	13R-214R-1 & BR-1(1)15R-1	KENDALL	429	79
FINAL SUBMITTAL			CONTRACT NO. 66985	
ILLINOIS FED. AID PROJECT				