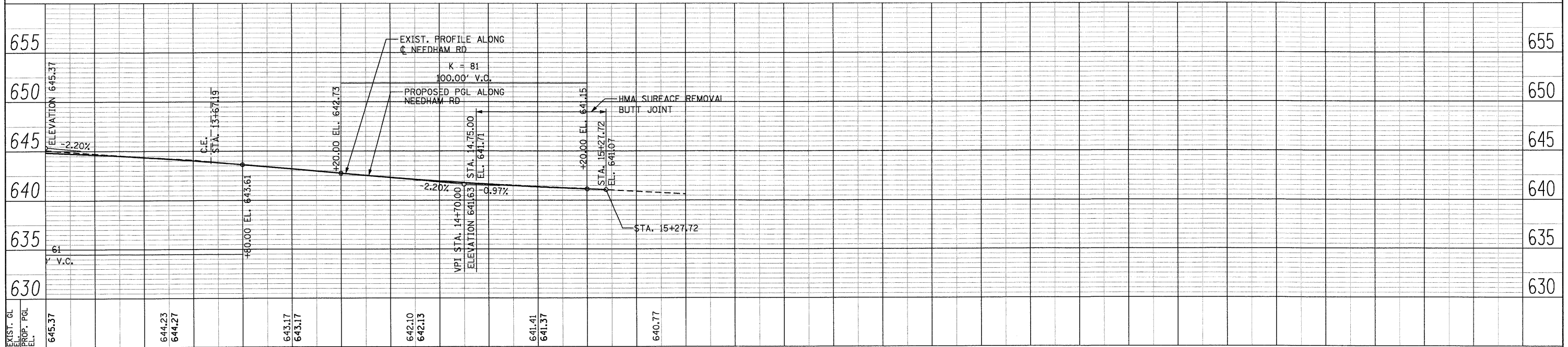
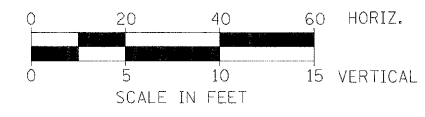
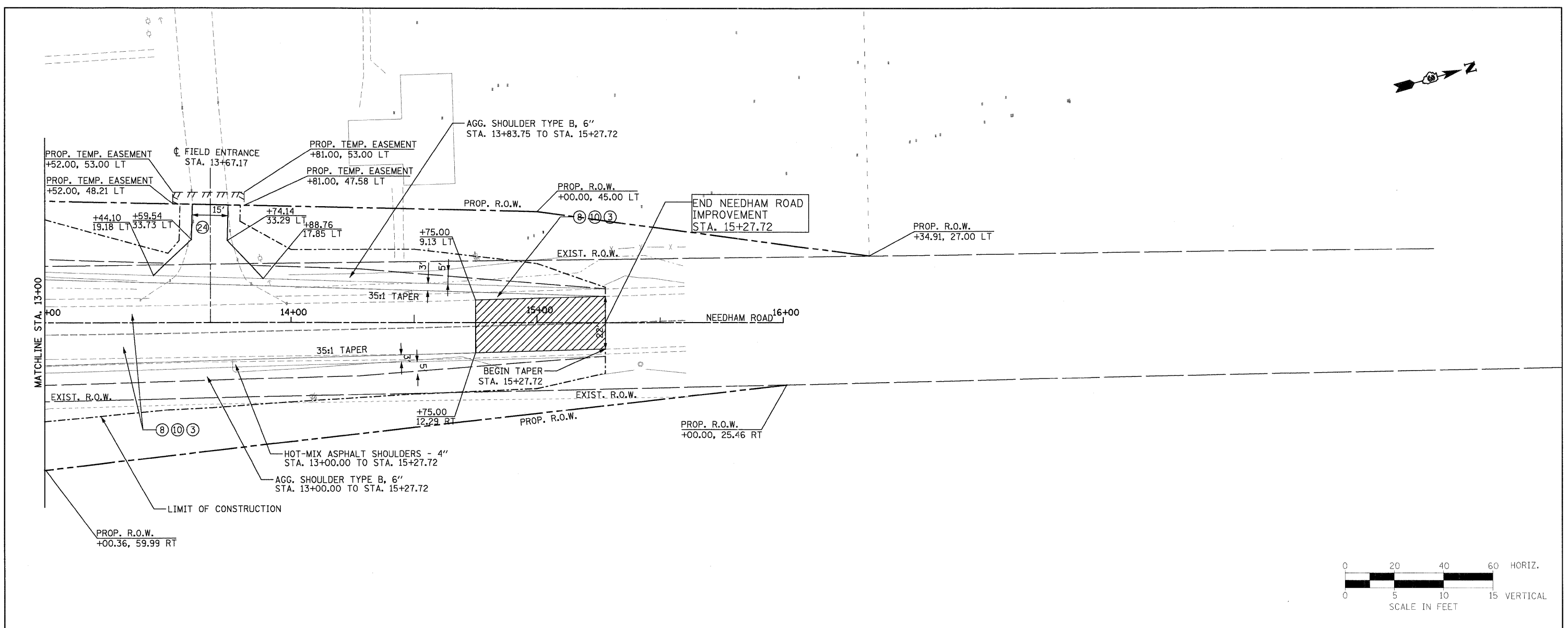


PLAN  
 SURVEYED BY: \_\_\_\_\_  
 ALIGNED BY: \_\_\_\_\_  
 RT. OF WAY CHECKED BY: \_\_\_\_\_  
 NO. \_\_\_\_\_  
 DATE \_\_\_\_\_

PROFILE  
 SURVEYED BY: \_\_\_\_\_  
 GRADES CHECKED BY: \_\_\_\_\_  
 B.M. NOTED BY: \_\_\_\_\_  
 STRUCTURE NOTATIONS C/P/D NO. \_\_\_\_\_  
 DATE \_\_\_\_\_



**PB Americas, Inc.**  
 230 WEST MONROE STREET,  
 SUITE 900  
 CHICAGO, IL 60606  
 (312)782-8150

FILE NAME = D366985-shr-23p1npr.dgn	DESIGNED - MMS	REVISED -
DESIGNED - MMS	DRAWN - MMS	REVISED -
CHECKED - KJB	DATE - 08-18-2011	REVISED -
PLOT SCALE = 20		
PLOT DATE = 19-AUG-2011 08:15		

**STATE OF ILLINOIS  
 DEPARTMENT OF TRANSPORTATION**

**CROSS ROAD PLAN & PROFILE  
 NEEDHAM ROAD**

SCALE: 1"=20' Horiz | PNP - 23 OF 27 | STA. 13+00 TO STA.

F.A.P. RTE.	SECTION	COUNTY	TOTAL SHEETS	SHEET NO.
591	13R-2;14R-1 & BR-1(1);15R-1	KENDALL	429	84
FINAL SUBMITTAL			CONTRACT NO. 66985	
ILLINOIS FED. AID PROJECT				