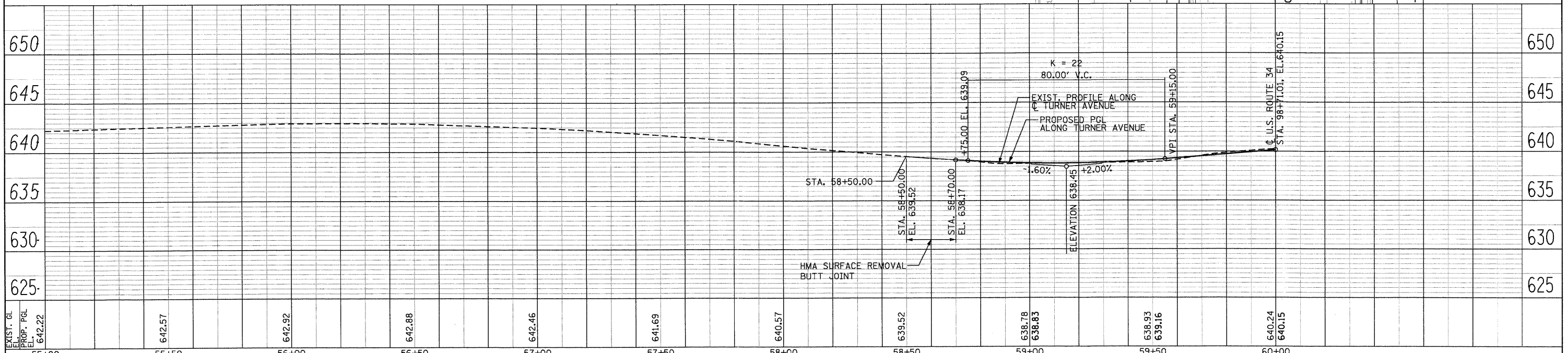
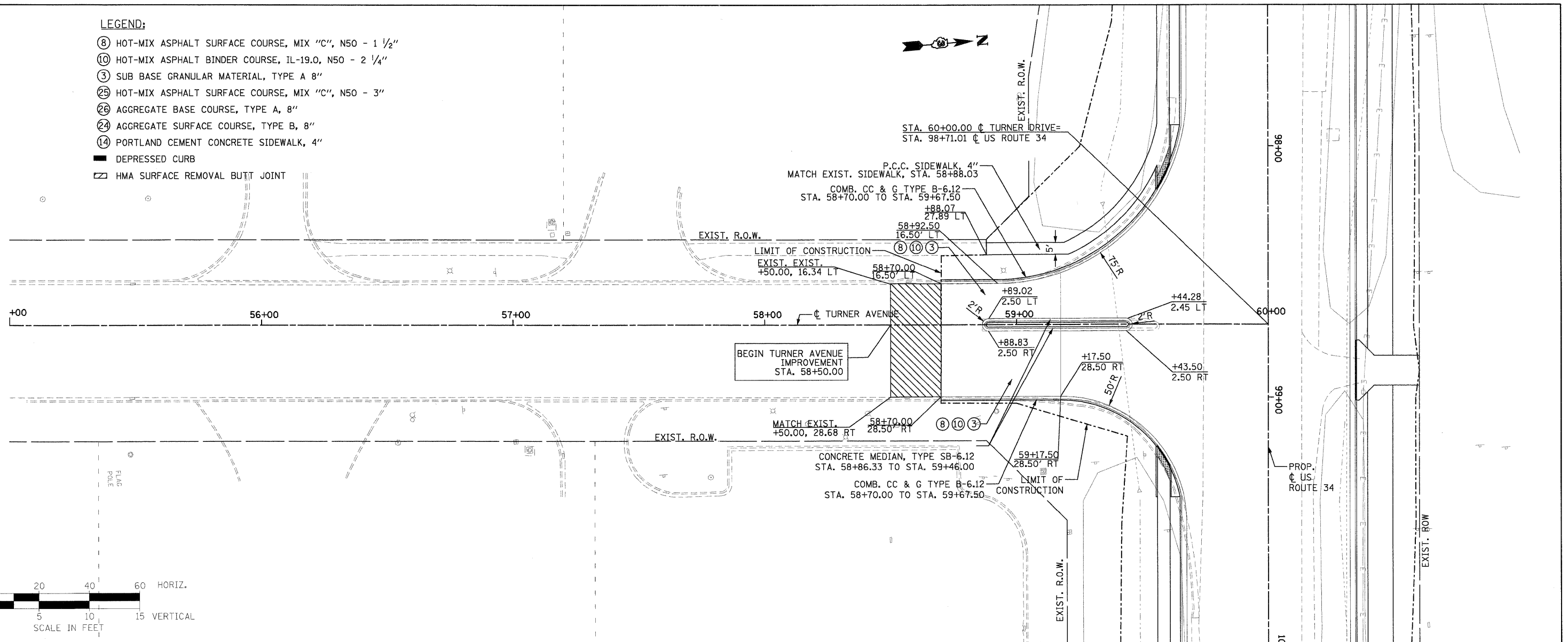
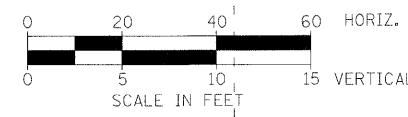


LEGEND:

- ⑧ HOT-MIX ASPHALT SURFACE COURSE, MIX "C", N50 - 1 1/2"
- ⑩ HOT-MIX ASPHALT BINDER COURSE, IL-19.0, N50 - 2 1/4"
- ③ SUB BASE GRANULAR MATERIAL, TYPE A 8"
- ②5 HOT-MIX ASPHALT SURFACE COURSE, MIX "C", N50 - 3"
- ②6 AGGREGATE BASE COURSE, TYPE A, 8"
- ②4 AGGREGATE SURFACE COURSE, TYPE B, 8"
- ⑭ PORTLAND CEMENT CONCRETE SIDEWALK, 4"
- DEPRESSED CURB
- ☒ HMA SURFACE REMOVAL BUTT JOINT

PLAN	BY	DATE
SURVEYED		
ALIGNED		
CHECKED		
RT. OF WAY CHECKED		
ROAD FILE NAME		

PROFILE	BY	DATE
SURVEYED		
GRADES CHECKED		
NOTED		
STRUCTURE NOTATIONS OK'D		



EXIST. G.L.	642.22	642.57	642.92	642.88	642.46	641.69	640.57	639.52	638.78	638.83	638.93	639.16	640.24	640.15	650
PROP. P.G.L.															650
STA.	55+00	55+50	56+00	56+50	57+00	57+50	58+00	58+50	59+00	59+50	59+50	59+50	60+00	60+00	

PB Americas, Inc.
230 WEST MONROE STREET,
SUITE 900
CHICAGO, IL 60606
312782-8150

FILE NAME = 0365985-shr-26p1npr.f.dgn	DESIGNED - MMS	REVISED -
DRAWN - MMS	CHECKED - KJB	DATE - 08-18-2011

REVISED -	REVISED -	REVISED -
REVISED -	REVISED -	REVISED -

**STATE OF ILLINOIS
DEPARTMENT OF TRANSPORTATION**

CROSS ROAD PLAN & PROFILE		
TURNER DRIVE		
SCALE: 1"=20' Horiz	PNP - 26 OF 27	STA. TO STA.

F.A.P. RTE.	SECTION	COUNTY	TOTAL SHEETS	SHEET NO.
591	13R-2p14R-1 & BR-10i15R-1	KENDALL	429	87
FINAL SUBMITTAL			CONTRACT NO. 66985	
ILLINOIS FED. AID PROJECT				