

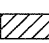



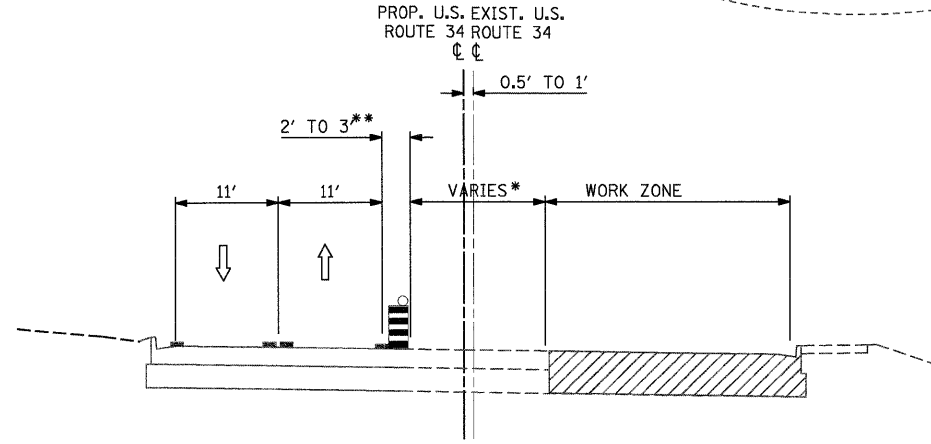
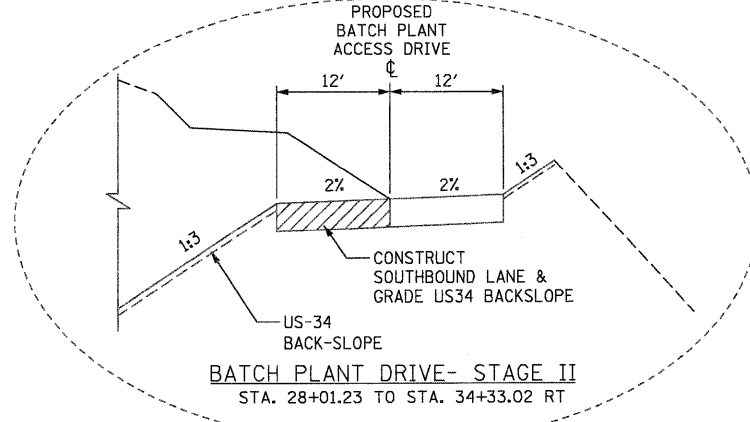
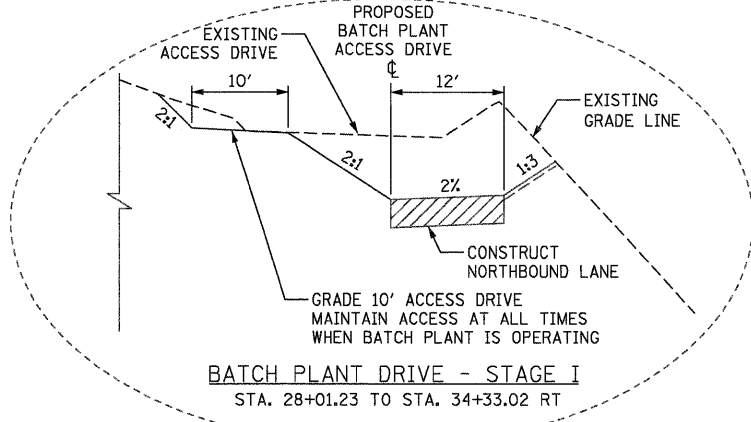
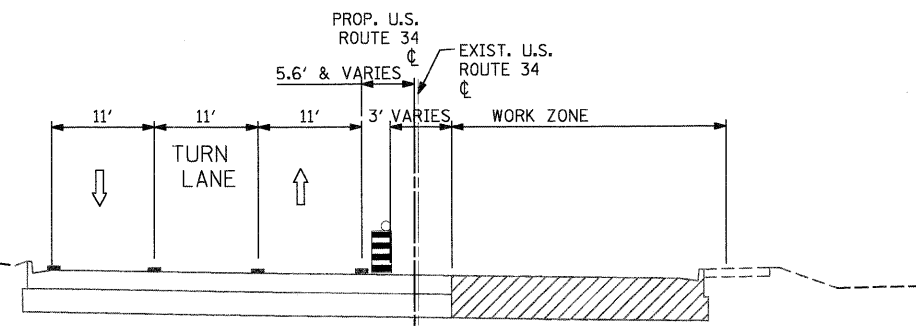


LEGEND

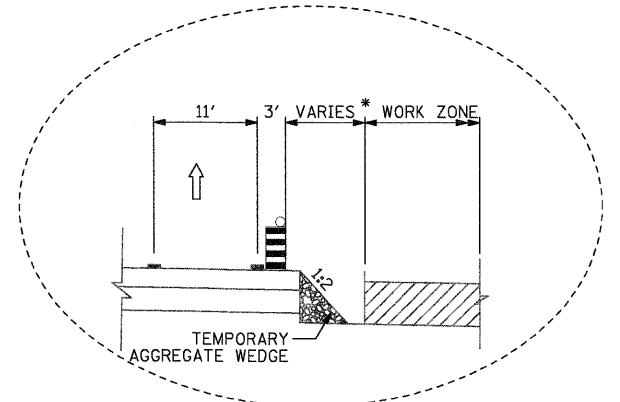
-  VERTICAL PANELS AT 50' SPACING IN CURVES AND 100' SPACING IN TANGENTS
-  DRUMS W/ STEADY BURN LIGHTS AT 25' C-C IN TAPERS AND 50' C-C IN TANGENTS
-  WORK ZONE
-  TEMPORARY PAVEMENT (HMA BINDER IL-19mm) 9"
-  TRAFFIC FLOW ARROW
-  TEMPORARY CONCRETE BARRIER



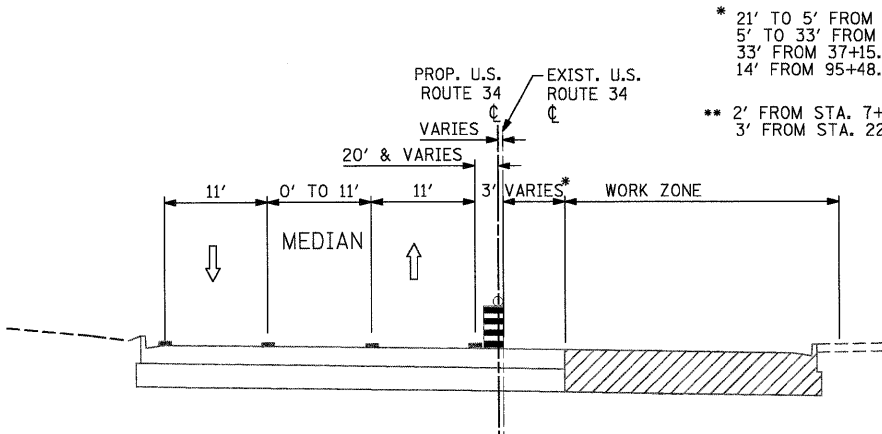
FROM STA. 7+00.00 TO STA. 58+28.10
FROM STA. 95+48.97 TO STA. 111+25.00
BRIDGE AND APPROACH OMISSION STA. 19+37.75 TO STA. 21+59.79



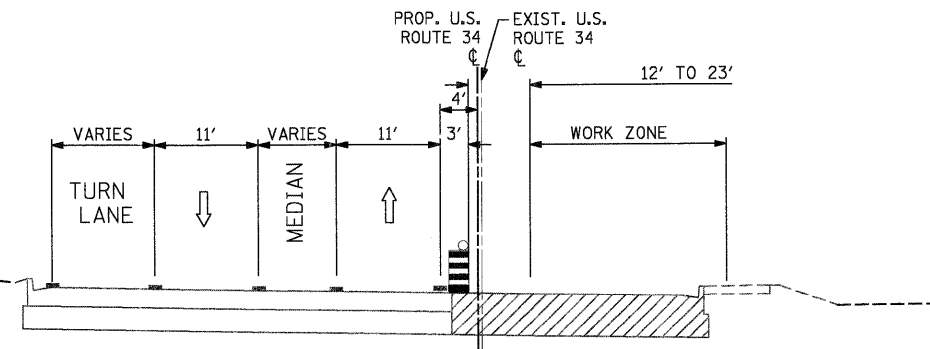
FROM STA. 62+75.53 TO STA. 64+45.62
FROM STA. 78+29.80 TO STA. 80+80.43
FROM STA. 88+41.98 TO STA. 90+91.98



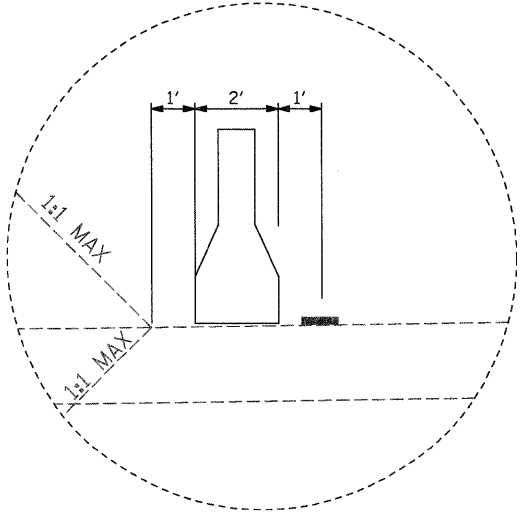
NOTE:
CONSTRUCT TEMPORARY AGGREGATE WEDGE WHERE DROP-OFF AT PAVEMENT'S CUT IS > 2' AND < 2.5'
STA. 75+25.00 TO STA. 79+50.00
STA. 81+50.00 TO STA. 83+50.00



FROM STA. 58+28.10 TO STA. 62+75.53
FROM STA. 69+81.63 TO STA. 77+28.53
FROM STA. 80+80.43 TO STA. 88+41.98
FROM STA. 90+91.98 TO STA. 95+48.97



FROM STA. 64+45.62 TO STA. 69+81.63



STA. 19+05.74 TO STA. 28+30.00
STA. 81+26.00 TO STA. 96+06.00

* 33' TO 12' FROM STA. 58+28.10 TO STA. 62+75.53
23' TO 9' FROM 69+81.63 TO STA. 77+28.53
4' TO 14' FROM 80+80.43 TO STA. 95+48.97

* 21' TO 5' FROM STA. 7+00 TO STA. 22+24.14
5' TO 33' FROM STA. 22+24.14 TO STA. 37+15.46
33' FROM 37+15.46 TO STA. 58+28.10
14' FROM 95+48.97 TO STA. 111+25.00

** 2' FROM STA. 7+00.00 TO STA. 22+24.14
3' FROM STA. 22+14.14 TO STA. 111+25.00

* 12' FROM 62+75.53 TO STA. 64+45.62
4' FROM 78+29.80 TO STA. 90+91.98