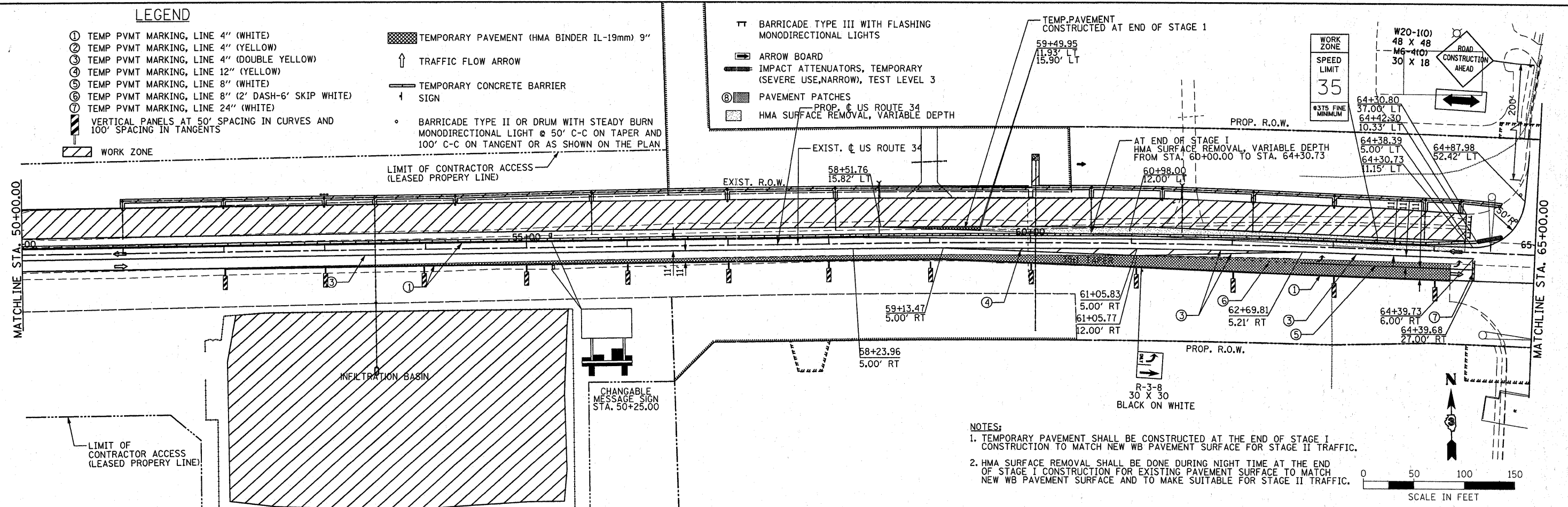


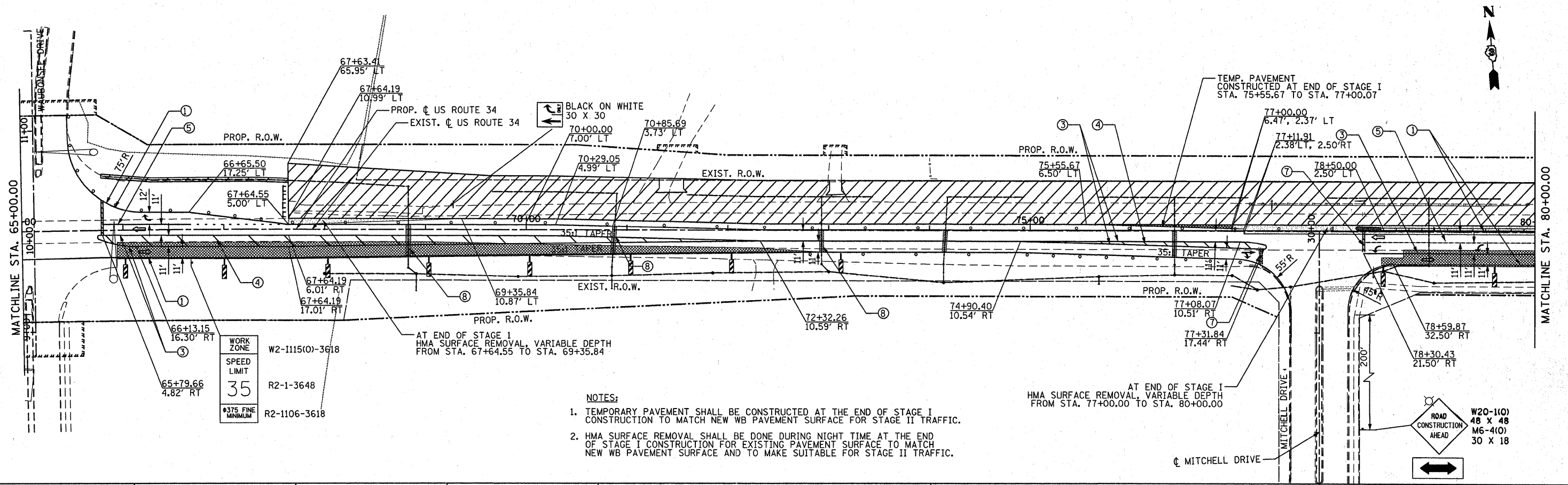
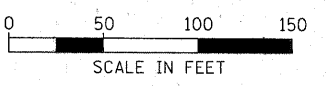
LEGEND

- ① TEMP PVMT MARKING, LINE 4" (WHITE)
- ② TEMP PVMT MARKING, LINE 4" (YELLOW)
- ③ TEMP PVMT MARKING, LINE 4" (DOUBLE YELLOW)
- ④ TEMP PVMT MARKING, LINE 12" (YELLOW)
- ⑤ TEMP PVMT MARKING, LINE 8" (WHITE)
- ⑥ TEMP PVMT MARKING, LINE 8" (2' DASH-6' SKIP WHITE)
- ⑦ TEMP PVMT MARKING, LINE 24" (WHITE)
- VERTICAL PANELS AT 50' SPACING IN CURVES AND 100' SPACING IN TANGENTS
- WORK ZONE
- TEMPORARY PAVEMENT (HMA BINDER IL-19mm) 9"
- ↑ TRAFFIC FLOW ARROW
- TEMPORARY CONCRETE BARRIER
- ↓ SIGN
- BARRICADE TYPE II OR DRUM WITH STEADY BURN MONODIRECTIONAL LIGHT @ 50' C-C ON TAPER AND 100' C-C ON TANGENT OR AS SHOWN ON THE PLAN
- LIMIT OF CONTRACTOR ACCESS (LEASED PROPERTY LINE)

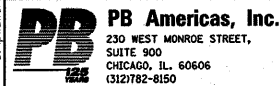
- ⚡ BARRICADE TYPE III WITH FLASHING MONODIRECTIONAL LIGHTS
- ARROW BOARD
- IMPACT ATTENUATORS, TEMPORARY (SEVERE USE, NARROW), TEST LEVEL 3
- PAVEMENT PATCHES
- HMA SURFACE REMOVAL, VARIABLE DEPTH



NOTES:
 1. TEMPORARY PAVEMENT SHALL BE CONSTRUCTED AT THE END OF STAGE I CONSTRUCTION TO MATCH NEW WB PAVEMENT SURFACE FOR STAGE II TRAFFIC.
 2. HMA SURFACE REMOVAL SHALL BE DONE DURING NIGHT TIME AT THE END OF STAGE I CONSTRUCTION FOR EXISTING PAVEMENT SURFACE TO MATCH NEW WB PAVEMENT SURFACE AND TO MAKE SUITABLE FOR STAGE II TRAFFIC.



NOTES:
 1. TEMPORARY PAVEMENT SHALL BE CONSTRUCTED AT THE END OF STAGE I CONSTRUCTION TO MATCH NEW WB PAVEMENT SURFACE FOR STAGE II TRAFFIC.
 2. HMA SURFACE REMOVAL SHALL BE DONE DURING NIGHT TIME AT THE END OF STAGE I CONSTRUCTION FOR EXISTING PAVEMENT SURFACE TO MATCH NEW WB PAVEMENT SURFACE AND TO MAKE SUITABLE FOR STAGE II TRAFFIC.



FILE NAME = duncanbd	DESIGNED - DM	REVISED - BDD 11/22/2011
PLOT SCALE = 50.0000' / in.	DRAWN - MMS	REVISED -
PLOT DATE = 11/22/2011	CHECKED - KJB	REVISED -
	DATE - 08-18-2011	REVISED -

**STATE OF ILLINOIS
DEPARTMENT OF TRANSPORTATION**

**SUGGESTED MAINTENANCE OF TRAFFIC
US ROUTE 34 - STAGE I**

SCALE: 1" = 50' MOT - 14 OF 66 STA. 50+00 TO STA. 80+00

F.A.P. RTE.	SECTION	COUNTY	TOTAL SHEETS	SHEET NO.
591	13R-2;14R-1 & BR-1(1)15R-1	KENDALL	429	102
	FINAL SUBMITTAL			CONTRACT NO. 66985

ILLINOIS FED. AID PROJECT