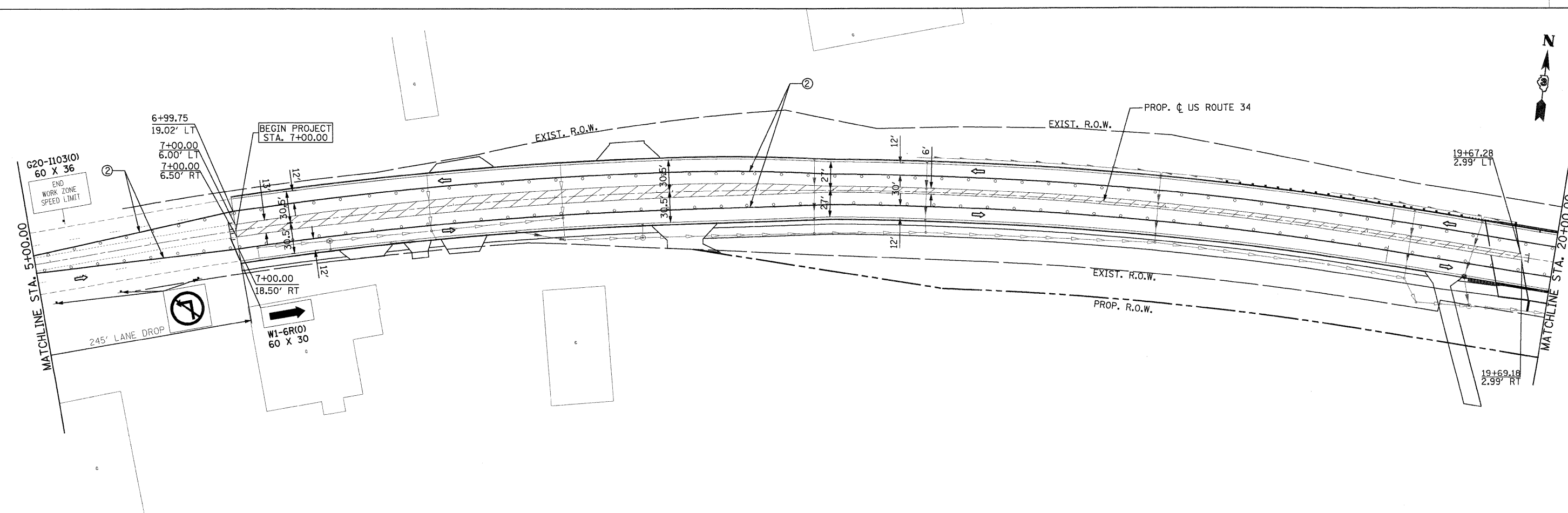
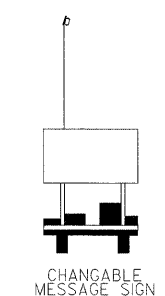
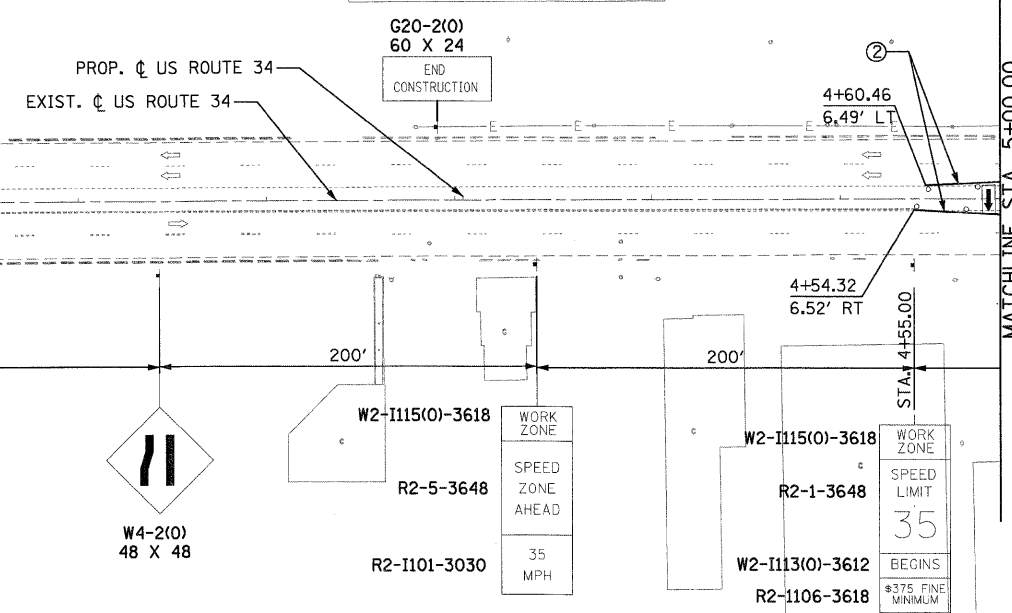


**LEGEND**

- ① TEMP PVMT MARKING, LINE 4" (WHITE)
- ② TEMP PVMT MARKING, LINE 4" (YELLOW)
- ③ TEMP PVMT MARKING, LINE 4" (DOUBLE YELLOW)
- ④ TEMP PVMT MARKING, LINE 12" (YELLOW)
- ⑤ TEMP PVMT MARKING, LINE 8" (WHITE)
- ⑥ TEMP PVMT MARKING, LINE 8" (2' DASH-6' SKIP WHITE)
- ⑦ TEMP PVMT MARKING, LINE 24" (WHITE)
- TEMPORARY PAVEMENT (HMA BINDER IL-19mm) 9"
- ↑ TRAFFIC FLOW ARROW
- TEMPORARY CONCRETE BARRIER
- ↓ SIGN
- BARRICADE TYPE II OR DRUM WITH STEADY BURN MONODIRECTIONAL LIGHT @ 50' C-C ON TAPER AND 100' C-C ON TANGENT OR AS SHOWN ON THE PLAN
- BARRICADE TYPE III WITH FLASHING MONODIRECTIONAL LIGHTS
- ARROW BOARD
- IMPACT ATTENUATORS, TEMPORARY (SEVERE USE, NARROW), TEST LEVEL 3
- WORK ZONE
- PAVEMENT PATCHES



**PB Americas, Inc.**  
 230 WEST MONROE STREET,  
 SUITE 900  
 CHICAGO, IL 60606  
 (312)782-8150

FILE NAME = D366785-mot1101.dgn  
 PLOT SCALE = 50  
 PLOT DATE = 19-AUG-2011 08:17

DESIGNED - DM  
 DRAWN - MMS  
 CHECKED - KJB  
 DATE - 08-18-2011

REVISED -  
 REVISED -  
 REVISED -  
 REVISED -

**STATE OF ILLINOIS  
 DEPARTMENT OF TRANSPORTATION**

**SUGGESTED MAINTENANCE OF TRAFFIC  
 US ROUTE 34 - STAGE III**  
 SCALE: 1" = 50'  
 MOT - 22 OF 66  
 STA. BEGIN TO STA. 20+00

F.A.P. RTE.	SECTION	COUNTY	TOTAL SHEETS	SHEET NO.
591	13R-2;14R-1 & BR-1(0);15R-1	KENDALL	429	110
FINAL SUBMITTAL			CONTRACT NO. 66985	
ILLINOIS FED. AID PROJECT				