

LEGEND:

- XXX STRUCTURE NUMBER
- XXX PIPE NUMBER
- PROPOSED DITCH
- PIPE TO BE REMOVED
- PROPOSED CATCH BASIN
- PROPOSED INLET
- PROPOSED MANHOLE
- PROPOSED STORM SEWER
- PROPOSED UNDERDRAINS
- PROPOSED CONCRETE HEADWALL FOR PIPE DRAIN
- EXISTING CATCH BASIN
- EXISTING INLET
- EXISTING MANHOLE
- EXISTING STORM SEWER
- ADJUST FRAME AND LID
- ADJUST FRAME AND GRATE
- STRUCTURE TO BE REMOVED
- ITEM TO BE ABANDONED
- UTILITY TEST HOLE (S.U.E.)

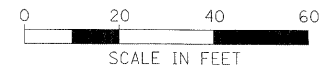
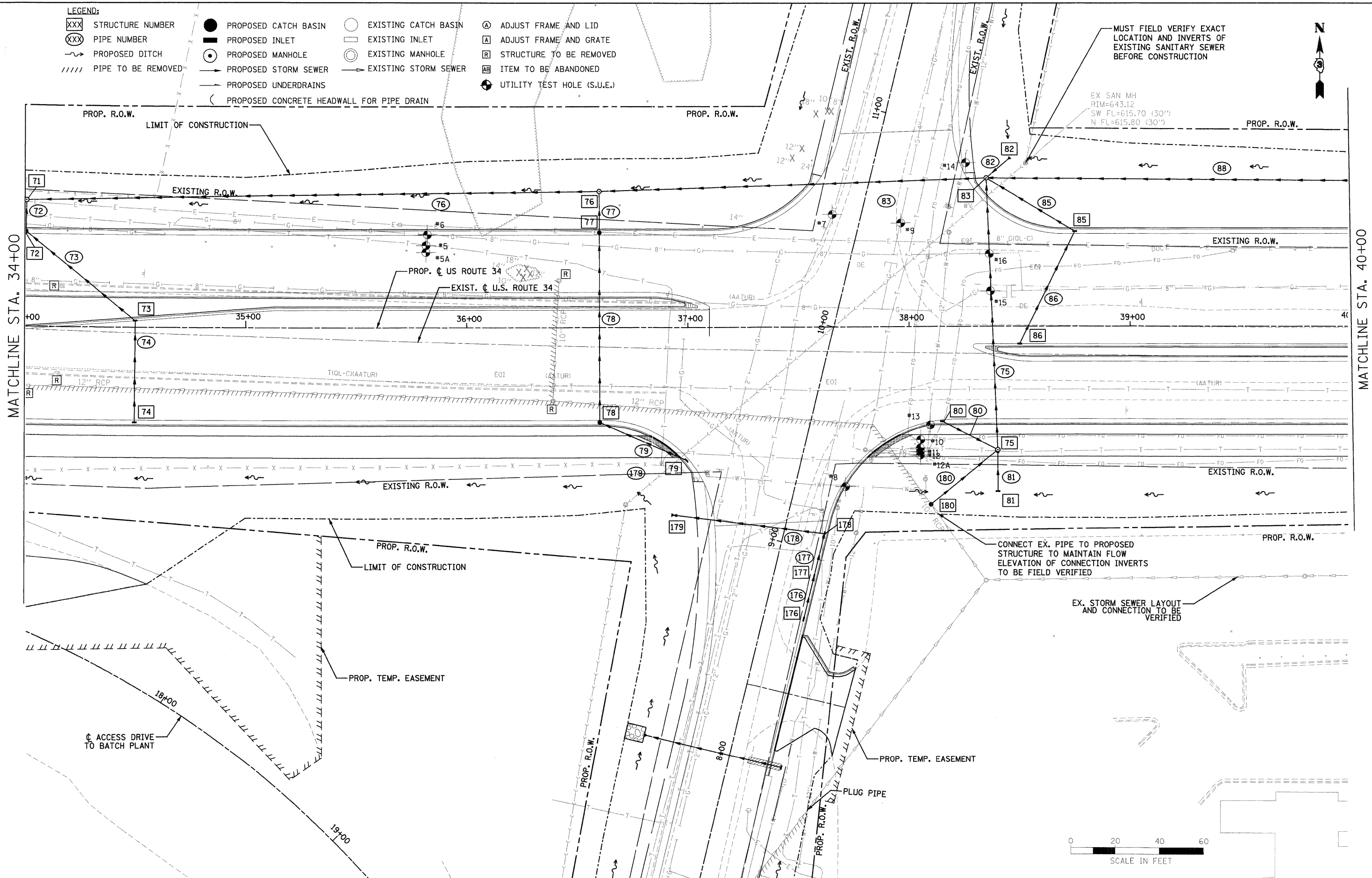
MUST FIELD VERIFY EXACT LOCATION AND INVERTS OF EXISTING SANITARY SEWER BEFORE CONSTRUCTION

EX SAN MH
RIM=643.12
SW FL=615.70 (30")
N FL=615.80 (30")



MATCHLINE STA. 34+00

MATCHLINE STA. 40+00



PB Americas, Inc.
230 WEST MONROE STREET,
SUITE 900
CHICAGO, IL, 60606
(312)782-6150

FILE NAME = 0366985-shr-6drain-plandgn
PLOT SCALE =
PLOT DATE = 19-AUG-2011 08:28

DESIGNED - RJD	REVISED -
DRAWN - RJD	REVISED -
CHECKED - PMK	REVISED -
DATE - 08-18-2011	REVISED -

**STATE OF ILLINOIS
DEPARTMENT OF TRANSPORTATION**

**DRAINAGE PLAN & PROFILE
US ROUTE 34**

SCALE: AS SHOWN DRNG - 6A OF 28 STA. 34+00 TO STA. 40+00

F.A.P. RTE.	SECTION	COUNTY	TOTAL SHEETS	SHEET NO.
591	13R-2;14R-1 & BR-1(1);15R-1	KENDALL	429	168
FINAL SUBMITTAL			CONTRACT NO. 66985	
ILLINOIS FED. AID PROJECT				