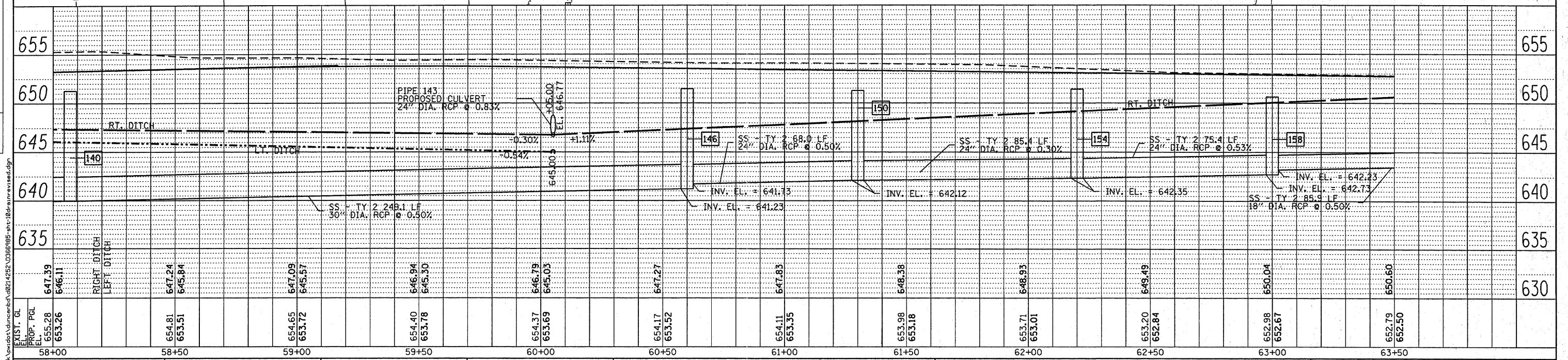
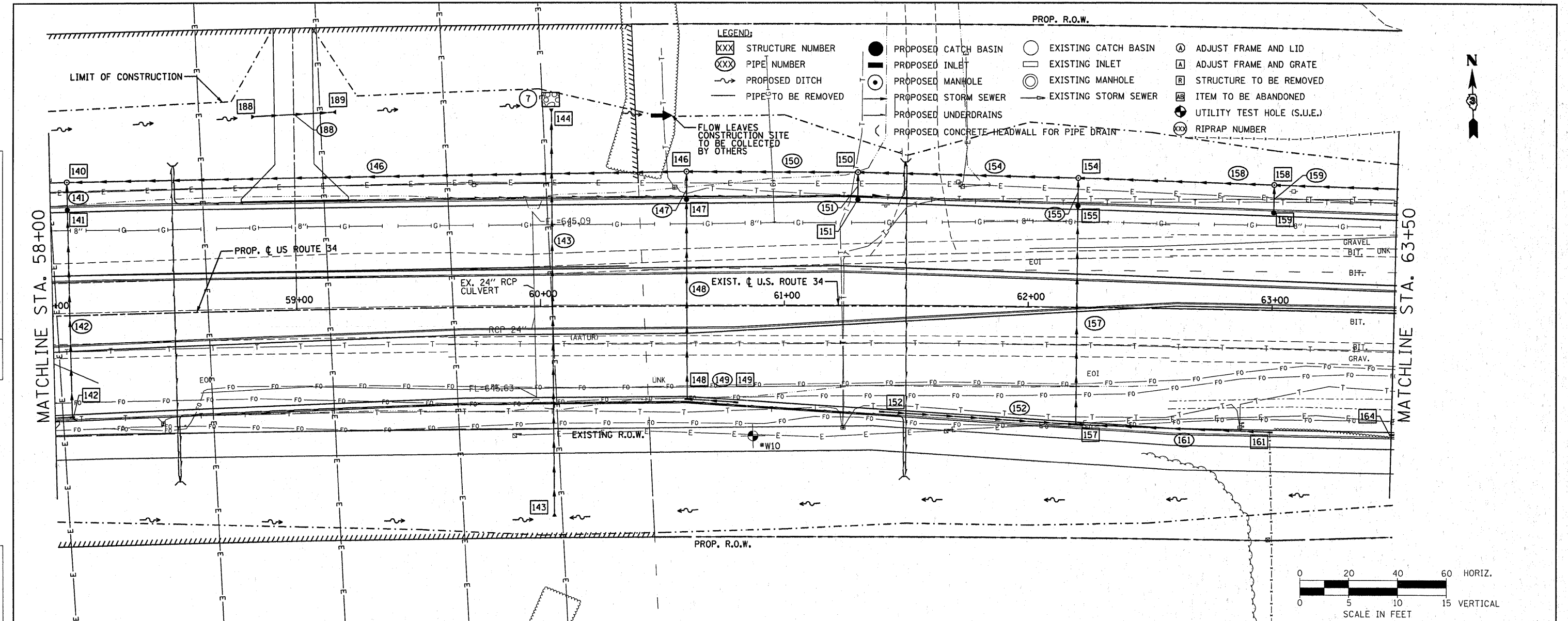


| | |
|------|--------------------|
| DATE | |
| BY | |
| PLAN | SURVEYED |
| | ALIGNED |
| | CHECKED |
| | NO. OF WAY CHECKED |
| | ADD FILE NAME |
| | NO. |

| | |
|---------|---------------------------|
| DATE | |
| BY | |
| PROFILE | SURVEYED |
| | GRADES CHECKED |
| | STRUCTURE NOTATION'S CRKD |
| | NO. |



PB Americas, Inc.
 230 WEST MONROE STREET,
 SUITE 900
 CHICAGO, IL 60606
 (312)782-8150

| | | |
|-----------------------------|-------------------|--------------------------|
| FILE NAME = dunoanbd | DESIGNED - RJD | REVISED - BDD 11/21/2011 |
| PLOT SCALE = 28.0000' / in. | DRAWN - RJD | REVISED - |
| PLOT DATE = 11/22/2011 | CHECKED - PMK | REVISED - |
| | DATE - 08-18-2011 | REVISED - |

**STATE OF ILLINOIS
 DEPARTMENT OF TRANSPORTATION**

**DRAINAGE PLAN & PROFILE
 US ROUTE 34**

SCALE: AS SHOWN DRNG - 10 OF 28 STA. 58+00 TO STA. 63+50

| | | | | |
|-------------|-----------------------------|---------------------------|--------------|-----------|
| F.A.P. RTE. | SECTION | COUNTY | TOTAL SHEETS | SHEET NO. |
| 591 | 13R-2;14R-1 & BR-1(1);15R-1 | KENDALL | 429 | 173 |
| | FINAL SUBMITTAL | CONTRACT NO. 66985 | | |
| | | ILLINOIS FED. AID PROJECT | | |