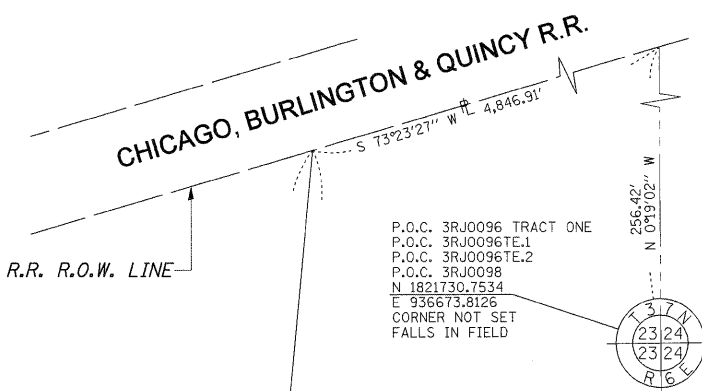
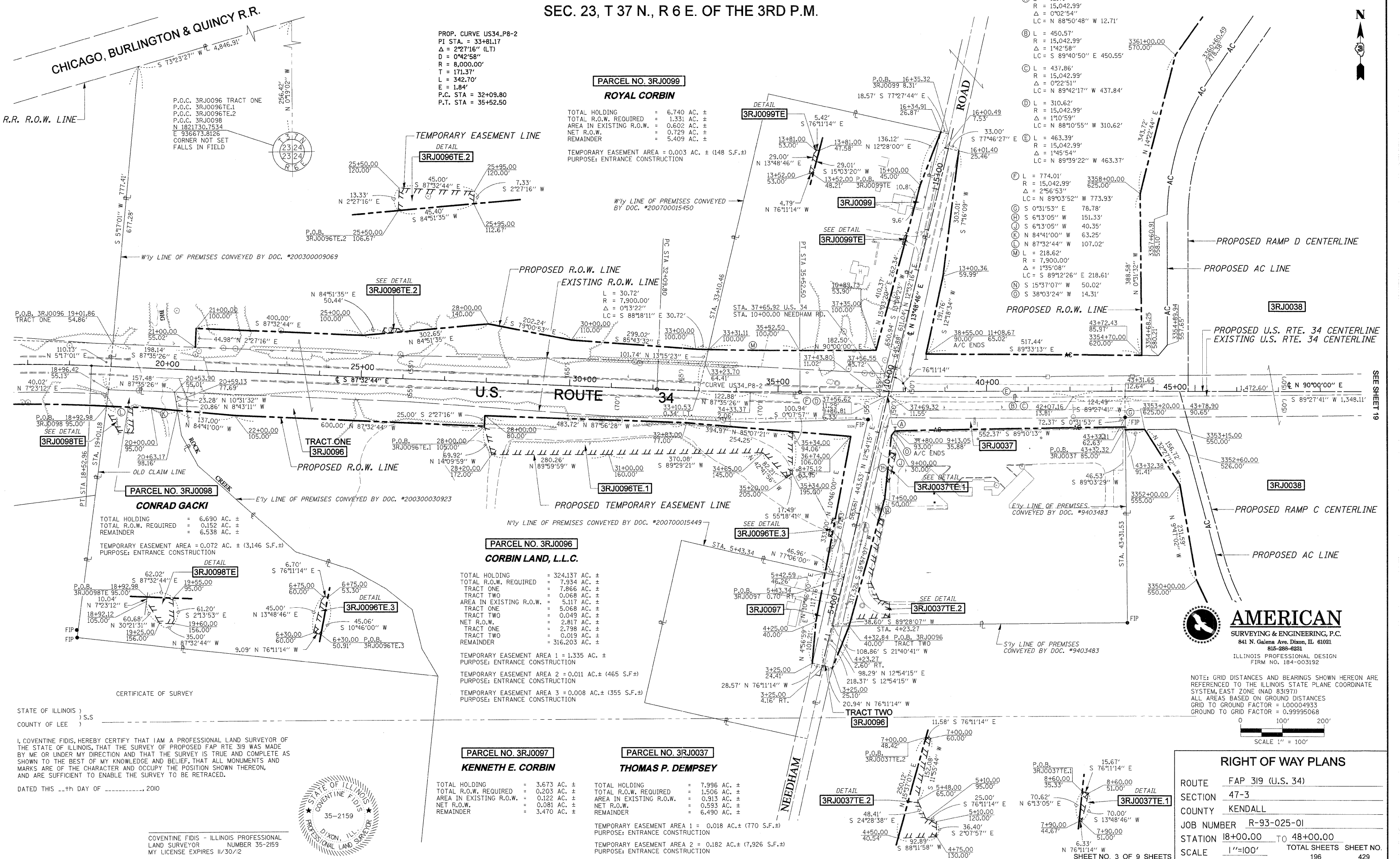


SEC. 23, T 37 N., R 6 E. OF THE 3RD P.M.



P.O.C. 3RJ0096 TRACT ONE
P.O.C. 3RJ0096TE.1
P.O.C. 3RJ0096TE.2
P.O.C. 3RJ0098
N 1821730.7534
E 936673.8126
CORNER NOT SET
FALLS IN FIELD

PROP. CURVE US34.P8-2
PI STA. = 33+81.17
Δ = 2°27'16" (LT)
D = 0°42'58"
R = 8,000.00'
T = 171.37'
L = 342.70'
E = 1.84'
P.C. STA = 32+09.80
P.T. STA = 35+52.50

PARCEL NO. 3RJ0099
ROYAL CORBIN

TOTAL HOLDING = 6.740 AC. ±
TOTAL R.O.W. REQUIRED = 1.331 AC. ±
AREA IN EXISTING R.O.W. = 0.602 AC. ±
NET R.O.W. = 0.729 AC. ±
REMAINDER = 5.409 AC. ±

TEMPORARY EASEMENT AREA = 0.003 AC. ± (148 S.F.±)
PURPOSE: ENTRANCE CONSTRUCTION

- (A) L = 12.71'
R = 15,042.99'
Δ = 0°02'54"
LC = N 88°50'48" W 12.71'
- (B) L = 450.57'
R = 15,042.99'
Δ = 1°42'58"
LC = S 89°40'50" E 450.55'
- (C) L = 437.86'
R = 15,042.99'
Δ = 0°22'51"
LC = N 89°42'17" W 437.84'
- (D) L = 310.62'
R = 15,042.99'
Δ = 1°10'59"
LC = N 88°10'55" W 310.62'
- (E) L = 463.39'
R = 15,042.99'
Δ = 1°45'54"
LC = N 89°39'22" W 463.37'
- (F) L = 774.01'
R = 15,042.99'
Δ = 2°56'53"
LC = N 89°03'52" W 773.93'
- (G) S 0°31'53" E 78.78'
- (H) S 6°13'05" W 151.33'
- (I) S 6°13'05" W 40.35'
- (J) N 84°41'00" W 63.25'
- (K) N 87°32'44" W 107.02'
- (L) L = 218.62'
R = 7,900.00'
Δ = 1°35'08"
LC = S 89°12'26" E 218.61'
- (M) S 15°37'07" W 50.02'
- (N) S 38°03'24" W 14.31'

PARCEL NO. 3RJ0098
CONRAD GACKI

TOTAL HOLDING = 6.690 AC. ±
TOTAL R.O.W. REQUIRED = 0.152 AC. ±
REMAINDER = 6.538 AC. ±

TEMPORARY EASEMENT AREA = 0.072 AC. ± (3,146 S.F.±)
PURPOSE: ENTRANCE CONSTRUCTION

PARCEL NO. 3RJ0096
CORBIN LAND, L.L.C.

TOTAL HOLDING = 324.137 AC. ±
TOTAL R.O.W. REQUIRED = 7.934 AC. ±
TRACT ONE = 7.866 AC. ±
TRACT TWO = 0.068 AC. ±
AREA IN EXISTING R.O.W. = 5.117 AC. ±
TRACT ONE = 5.068 AC. ±
TRACT TWO = 0.049 AC. ±
NET R.O.W. = 2.817 AC. ±
TRACT ONE = 2.798 AC. ±
TRACT TWO = 0.019 AC. ±
REMAINDER = 316.203 AC. ±

TEMPORARY EASEMENT AREA 1 = 1.335 AC. ±
PURPOSE: ENTRANCE CONSTRUCTION

TEMPORARY EASEMENT AREA 2 = 0.011 AC. ± (465 S.F.±)
PURPOSE: ENTRANCE CONSTRUCTION

TEMPORARY EASEMENT AREA 3 = 0.008 AC. ± (355 S.F.±)
PURPOSE: ENTRANCE CONSTRUCTION

PARCEL NO. 3RJ0097
KENNETH E. CORBIN

TOTAL HOLDING = 3.673 AC. ±
TOTAL R.O.W. REQUIRED = 0.203 AC. ±
AREA IN EXISTING R.O.W. = 0.122 AC. ±
NET R.O.W. = 0.081 AC. ±
REMAINDER = 3.470 AC. ±

PARCEL NO. 3RJ0037
THOMAS P. DEMPSEY

TOTAL HOLDING = 7.996 AC. ±
TOTAL R.O.W. REQUIRED = 1.506 AC. ±
AREA IN EXISTING R.O.W. = 0.913 AC. ±
NET R.O.W. = 0.593 AC. ±
REMAINDER = 6.490 AC. ±

TEMPORARY EASEMENT AREA 1 = 0.018 AC.± (770 S.F.±)
PURPOSE: ENTRANCE CONSTRUCTION

TEMPORARY EASEMENT AREA 2 = 0.182 AC.± (7,926 S.F.±)
PURPOSE: ENTRANCE CONSTRUCTION



NOTE: GRID DISTANCES AND BEARINGS SHOWN HEREON ARE REFERENCED TO THE ILLINOIS STATE PLANE COORDINATE SYSTEM, EAST ZONE (NAD 83/97)
ALL AREAS BASED ON GROUND DISTANCES
GRID TO GROUND FACTOR = 1.0004933
GROUND TO GRID FACTOR = 0.99995068

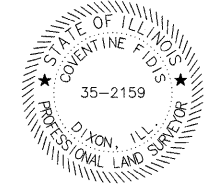
SCALE 1" = 100'

ROUTE	FAP 319 (U.S. 34)
SECTION	47-3
COUNTY	KENDALL
JOB NUMBER	R-93-025-01
STATION	18+00.00 TO 48+00.00
SCALE	1"=100'
TOTAL SHEETS	9
SHEET NO.	3 OF 9

STATE OF ILLINOIS)
COUNTY OF LEE) S.S

I, COVENTINE FIDIS, HEREBY CERTIFY THAT I AM A PROFESSIONAL LAND SURVEYOR OF THE STATE OF ILLINOIS, THAT THE SURVEY OF PROPOSED FAP RTE 319 WAS MADE BY ME OR UNDER MY DIRECTION AND THAT THE SURVEY IS TRUE AND COMPLETE AS SHOWN TO THE BEST OF MY KNOWLEDGE AND BELIEF, THAT ALL MONUMENTS AND MARKS ARE OF THE CHARACTER AND OCCUPY THE POSITION SHOWN THEREON, AND ARE SUFFICIENT TO ENABLE THE SURVEY TO BE RETRACED.

DATED THIS ____th DAY OF _____, 2010



COVENTINE FIDIS - ILLINOIS PROFESSIONAL LAND SURVEYOR
NUMBER 35-2159
MY LICENSE EXPIRES 11/30/12