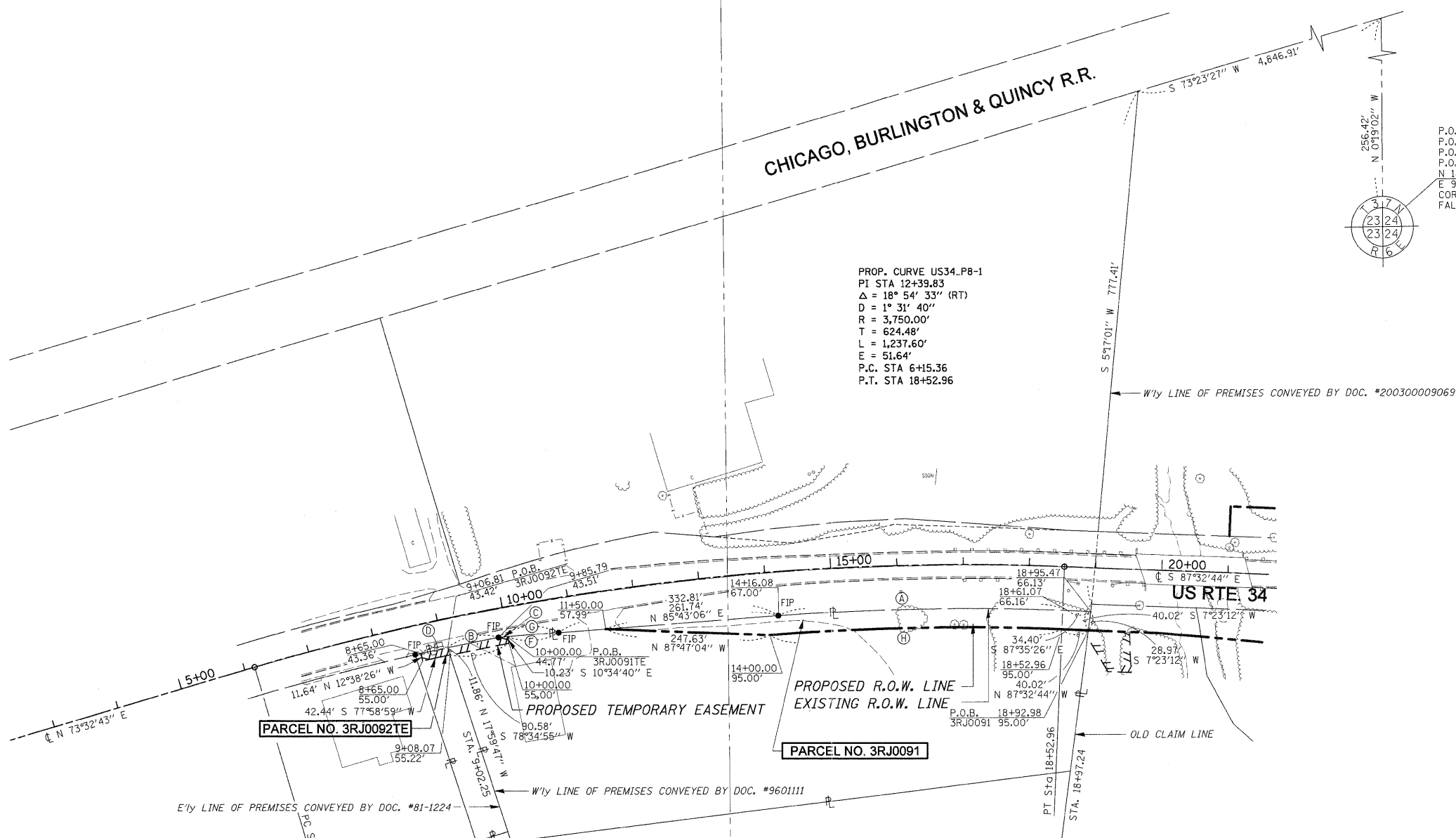


SEC. 22 & 23, T 37 N., R 6 E. OF THE 3RD P.M.



P.O.C. 3RJ0091
 P.O.C. 3RJ0091TE
 P.O.C. 3RJ0092TE
 P.O.C. 3RJ0095
 N 1821730.7534
 E 936673.8126
 CORNER NOT SET
 FALLS IN FIELD

PROP. CURVE US34.P8-1
 PI STA 12+39.83
 $\Delta = 18^\circ 54' 33''$ (RT)
 D = 1° 31' 40"
 R = 3,750.00'
 T = 624.48'
 L = 1,237.60'
 E = 51.64'
 P.C. STA 6+15.36
 P.T. STA 18+52.96

- (A) L = 437.23'
 R = 3,753.64'
 $\Delta = 1^\circ 31' 35''$
 LC = N 89°04'10" E 436.98'
- (B) L = 78.07'
 R = 3,773.36'
 $\Delta = 1^\circ 31' 06''$
 LC = N 78°40'07" E 78.06'
- (C) L = 14.10'
 R = 2,326.14'
 $\Delta = 0^\circ 20' 50''$
 LC = N 84°27'00" E 14.10'
- (D) L = 41.33'
 R = 3,773.36'
 $\Delta = 1^\circ 31' 06''$
 LC = N 77°45'50" E 41.33'
- (E) L = 144.19'
 R = 3,855.38'
 $\Delta = 2^\circ 08' 34''$
 LC = S 76°01'34" W 144.19'
- (F) L = 77.46'
 R = 2,236.14'
 $\Delta = 1^\circ 59' 05''$
 LC = S 85°37'37" W 77.46'
- (G) L = 91.56'
 R = 2,236.14'
 $\Delta = 2^\circ 20' 46''$
 LC = S 85°26'47" W 91.55'
- (H) L = 441.48'
 R = 3,660.00'
 $\Delta = 6^\circ 54' 40''$
 LC = S 88°59'39" W 441.21'

PARCEL NO. 3RJ0091
PATRICIA D. SUTKER, et al

TOTAL HOLDING = 5.900 AC. ±
 TOTAL R.O.W. REQUIRED = 0.395 AC. ±
 REMAINDER = 5.505 AC. ±

TEMPORARY EASEMENT AREA = 0.025 AC. ± (1,071 S.F. ±)
 PURPOSE: ENTRANCE CONSTRUCTION

PARCEL NO. 3RJ0092TE
GREATBANC TRUST COMPANY

TOTAL HOLDING = 0.380 AC. ±
 TEMPORARY EASEMENT AREA = 0.011 AC. ± (492 S.F. ±)
 PURPOSE: ENTRANCE CONSTRUCTION

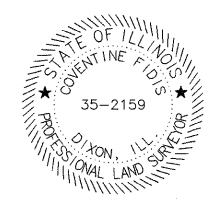
CERTIFICATE OF SURVEY

STATE OF ILLINOIS)
) S.S.
 COUNTY OF LEE)

I, COVENTINE FIDIS, HEREBY CERTIFY THAT I AM A PROFESSIONAL LAND SURVEYOR OF THE STATE OF ILLINOIS, THAT THE SURVEY OF PROPOSED FAP RTE 319 WAS MADE BY ME OR UNDER MY DIRECTION AND THAT THE SURVEY IS TRUE AND COMPLETE AS SHOWN TO THE BEST OF MY KNOWLEDGE AND BELIEF, THAT ALL MONUMENTS AND MARKS ARE OF THE CHARACTER AND OCCUPY THE POSITION SHOWN THEREON, AND ARE SUFFICIENT TO ENABLE THE SURVEY TO BE RETRACED.

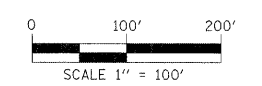
DATED THIS ---- DAY OF -----, 2010

COVENTINE FIDIS - ILLINOIS PROFESSIONAL LAND SURVEYOR
 NUMBER 35-2159
 MY LICENSE EXPIRES 11/30/12



AMERICAN
 SURVEYING & ENGINEERING, P.C.
 841 N. Galena Ave. Dixon, IL 61021
 815-288-6231
 ILLINOIS PROFESSIONAL DESIGN
 FIRM NO. 184-003192

NOTE: GRID DISTANCES AND BEARINGS SHOWN HEREON ARE REFERENCED TO THE ILLINOIS STATE PLANE COORDINATE SYSTEM, EAST ZONE (NAD 83)
 ALL AREAS BASED ON GROUND DISTANCES
 GRID TO GROUND FACTOR = 1.00004933
 GROUND TO GRID FACTOR = 0.99995068



RIGHT OF WAY PLANS

ROUTE	FAP 319 (U.S. 34)
SECTION	47-3
COUNTY	KENDALL
JOB NUMBER	R-93-025-01
STATION	7+00.00 TO 18+00.00
SCALE	1"=100'
TOTAL SHEETS	9
SHEET NO.	4