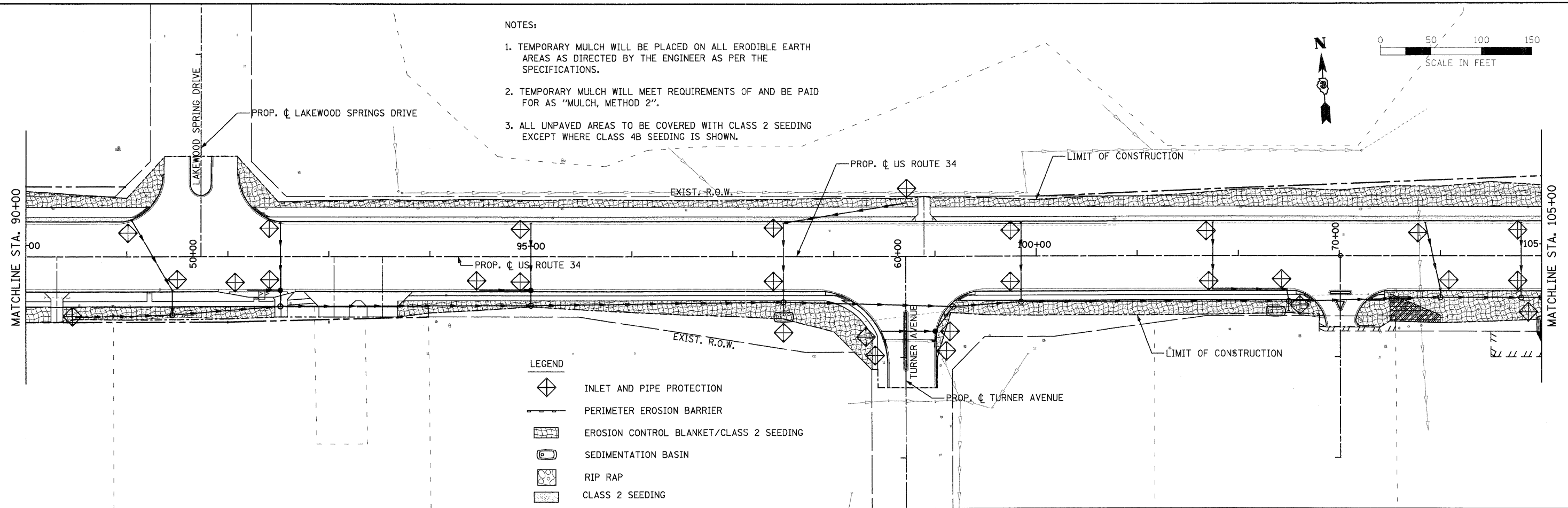
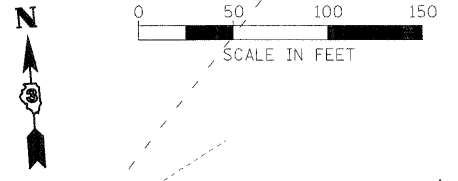


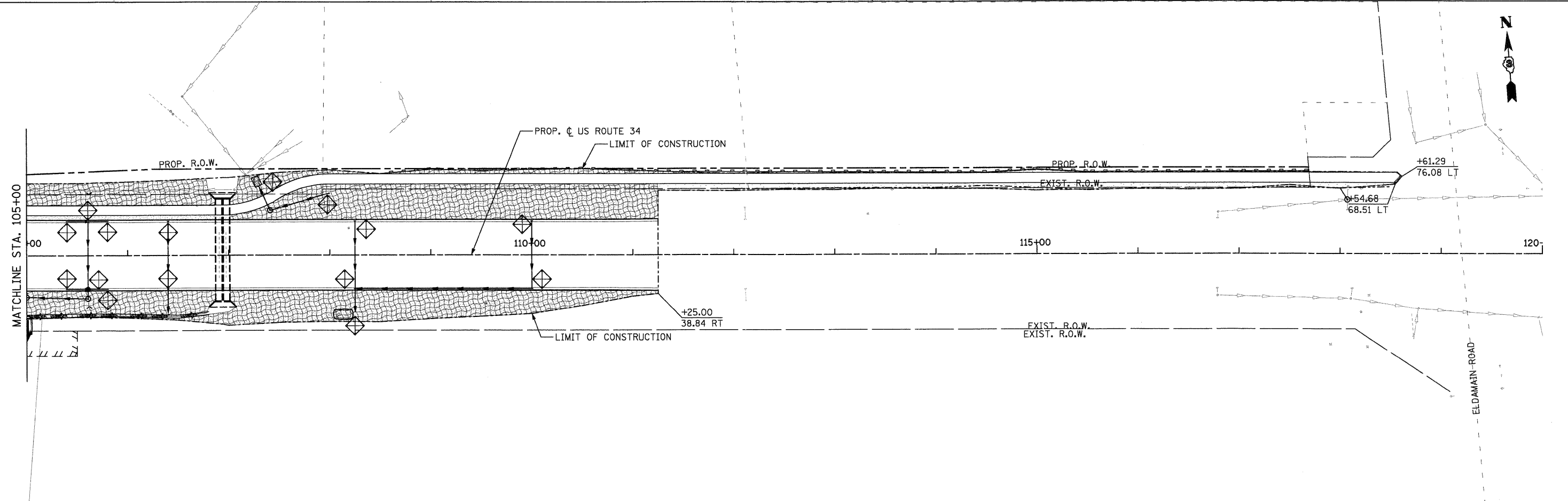
NOTES:

1. TEMPORARY MULCH WILL BE PLACED ON ALL ERODIBLE EARTH AREAS AS DIRECTED BY THE ENGINEER AS PER THE SPECIFICATIONS.
2. TEMPORARY MULCH WILL MEET REQUIREMENTS OF AND BE PAID FOR AS "MULCH, METHOD 2".
3. ALL UNPAVED AREAS TO BE COVERED WITH CLASS 2 SEEDING EXCEPT WHERE CLASS 4B SEEDING IS SHOWN.



LEGEND

- INLET AND PIPE PROTECTION
- PERIMETER EROSION BARRIER
- EROSION CONTROL BLANKET/CLASS 2 SEEDING
- SEDIMENTATION BASIN
- RIP RAP
- CLASS 2 SEEDING



PB Americas, Inc.
 230 WEST MONROE STREET,
 SUITE 900
 CHICAGO, IL 60606
 (312)782-8150

FILE NAME = D366985-eros24.dgn
 DESIGNED - RJD
 DRAWN - RJD
 CHECKED - PMK
 DATE - 08-18-2011
 PLOT SCALE = 50
 PLOT DATE = 19-AUG-2011 08:24

REVISED -
 REVISED -
 REVISED -
 REVISED -

**STATE OF ILLINOIS
 DEPARTMENT OF TRANSPORTATION**

**EROSION CONTROL & LANDSCAPING PLANS
 US ROUTE 34**

SCALE: 1" = 50' EROS - 4 OF 5 STA. 90+00 TO STA. 120+00

F.A.P. RTE.	SECTION	COUNTY	TOTAL SHEETS	SHEET NO.
591	13R-2;14R-1 & BR-1(1);15R-1	KENDALL	429	206
FINAL SUBMITTAL			CONTRACT NO. 66985	
ILLINOIS FED. AID PROJECT				