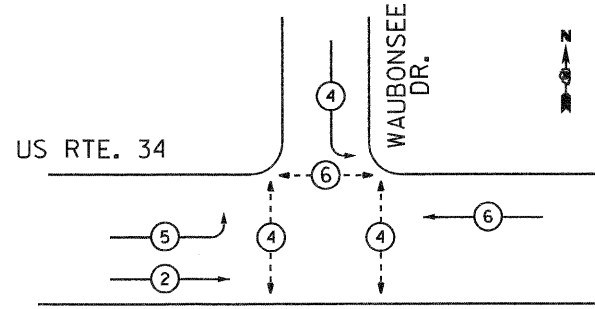


EJM ENGINEERING, INC.  
411 South Wells Street Suite 800  
Chicago, Illinois 60607

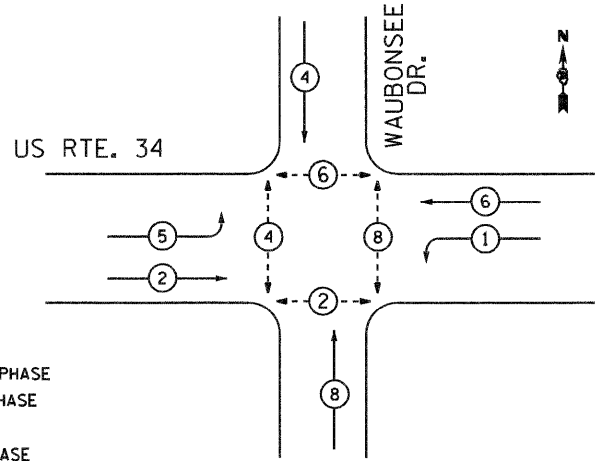


TEMPORARY PHASE DESIGNATION DIAGRAM  
STAGES 1A, 1, AND 2

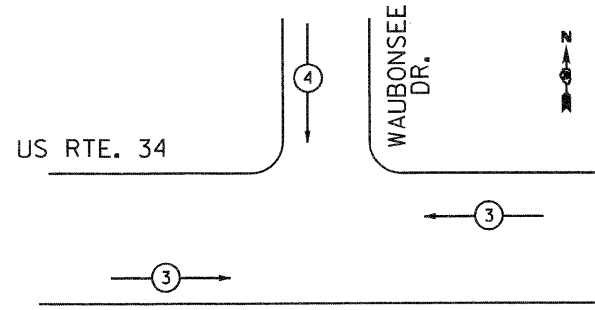


- LEGEND**
- SINGLE ENTRY PHASE
  - DUAL ENTRY PHASE
  - OVERLAP
  - PEDESTRIAN PHASE
  - NUMBER REFERS TO ASSOCIATED PHASE

TEMPORARY PHASE DESIGNATION DIAGRAM  
STAGE 3

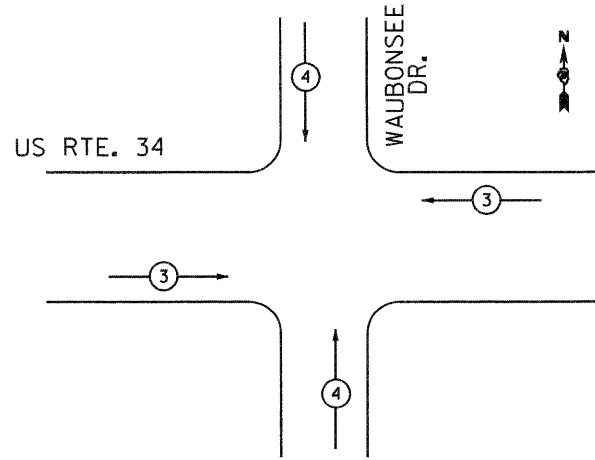


EMERGENCY VEHICLE PRE-EMPTION SEQUENCE  
STAGES 1A, 1, AND 2



TEMPORARY EMERGENCY VEHICLE PREEMPTORS		
EMERGENCY VEHICLE PREEMPTOR	3	4
MOVEMENT	←	↓

EMERGENCY VEHICLE PRE-EMPTION SEQUENCE  
STAGE 3



TEMPORARY EMERGENCY VEHICLE PREEMPTORS		
EMERGENCY VEHICLE PREEMPTOR	3	4
MOVEMENT	←	↑

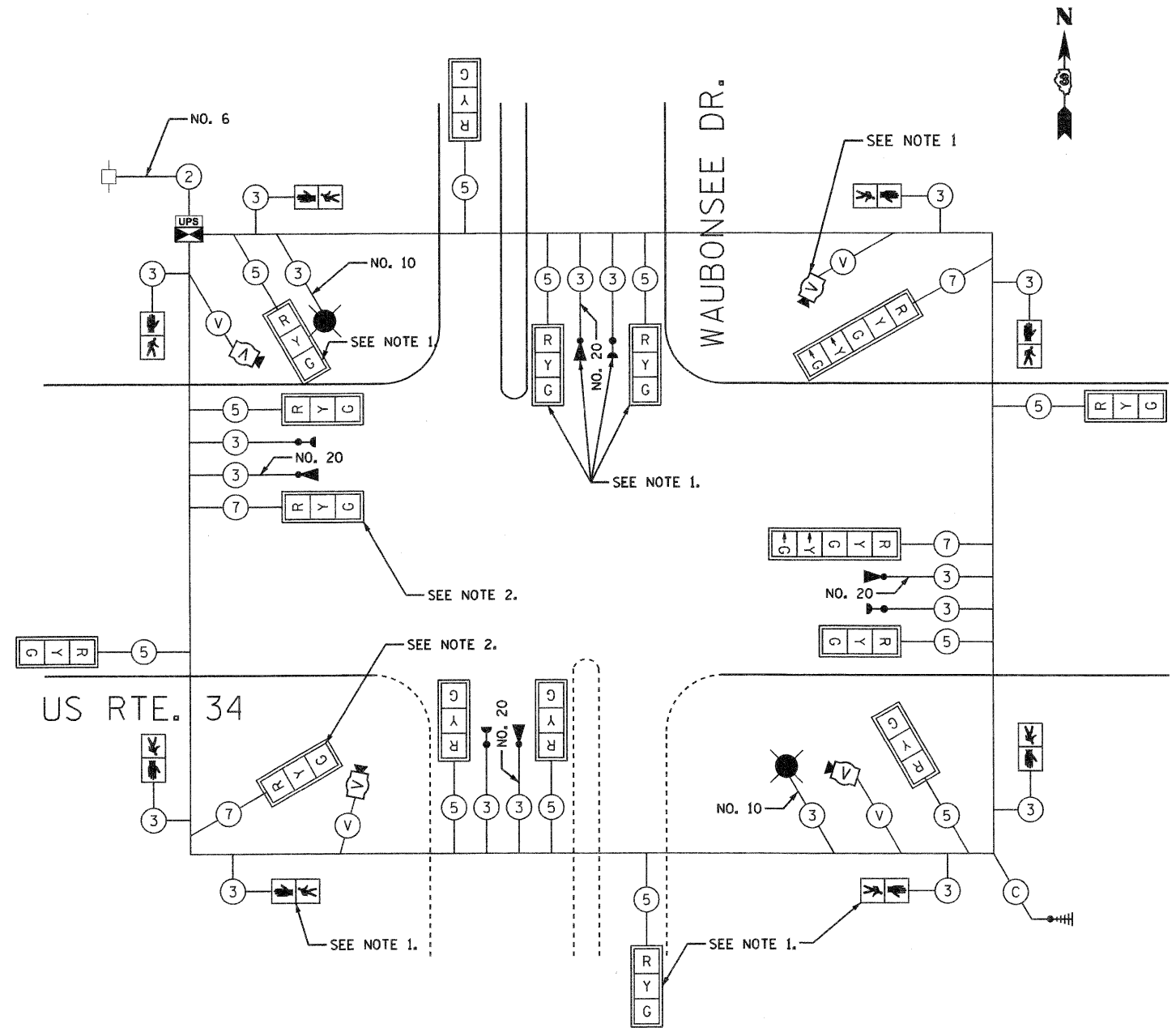
CABLE PLAN LEGEND

EXISTING PROPOSED

- 8" (200mm) TRAFFIC SIGNAL SECTION
- 12" (300mm) TRAFFIC SIGNAL SECTION
- 12" (300mm) PEDESTRIAN SIGNAL SECTION
- 12" (300mm) PEDESTRIAN SIGNAL SECTION
- CONTROLLER CABINET
- SERVICE INSTALLATION
- TELEPHONE CONNECTION
- EMERGENCY VEHICLE LIGHT DETECTOR
- CONFIRMATION BEACON
- UNINTERRUPTIBLE POWER SUPPLY
- LUMINAIRE

EXISTING PROPOSED

- SIGNAL FACE WITH BACKPLATE
- FIBER OPTIC CABLE IN CONDUIT, NO. 62.5/125 2-MM12F & SMI2F
- PUSHBUTTON DETECTOR
- VEHICLE DETECTOR, INDUCTION LOOP
- DENOTES NUMBER OF CONDUCTORS, ALL CABLE NO. 14 EXCEPT AS INDICATED. "V" INDICATES VENDOR CABLE FOR VIDEO CAMERA. "C" INDICATES COAXIAL CABLE. ALL LOOP DETECTOR CABLE TO BE SHIELDED.
- VIDEO CAMERA
- RADIO INTERCONNECT ANTENNA



TEMPORARY CABLE PLAN

NOTES:

1. DURING STAGE 3 OPERATIONS, ADD SIGNAL HEADS, VIDEO DETECTION, AND EMERGENCY VEHICLE PRE-EMPTION EQUIPMENT FOR THE NORTHBOUND APPROACH.
2. DURING STAGE 3 OPERATIONS, REPLACE 3-SECTION SIGNAL HEAD WITH 5-SECTION SIGNAL HEAD. UNUSED CONDUCTORS SHALL BE SEALED AND PROTECTED WHEN NOT IN USE DURING OTHER STAGES.
3. MODIFY CONTROLLER PHASING PER STAGE 3 PHASE DESIGNATION DIAGRAM AND EMERGENCY VEHICLE PRE-EMPTION SEQUENCE.

...U366785-ahb-tal2.dgn



FILE NAME =	DESIGNED - GR	REVISED -
PLOT SCALE = 1:20	DRAWN - GR	REVISED -
PLOT DATE = 4/9/2011	CHECKED - BS	REVISED -
	DATE - 4/8/2011	REVISED -

STATE OF ILLINOIS  
DEPARTMENT OF TRANSPORTATION

TEMPORARY CABLE PLAN  
US RTE. 34 AND WAUBONSEE DR.  
SCALE: N.T.S. SHEET NO. 2 OF 9 SHEETS STA. TO STA.

F.A.P. RTE.	SECTION	COUNTY	TOTAL SHEETS	SHEET NO.
591	13R-2;14R-1 & BR-1(1);15R-1	KENDALL	429	227
				CONTRACT NO. 66985
ILLINOIS FED. AID PROJECT				