

**GENERAL NOTES**

- Reinforcement bars shall conform to the requirements of ASTM A 706 Gr 60.
- Reinforcement bars designated (E) shall be epoxy coated.
- Plan dimensions and details relative to existing plans are subject to nominal construction variations. The Contractor shall field verify existing dimensions and details affecting new construction and make necessary approved adjustments prior to construction or ordering of materials. Such variations shall not be cause for additional compensation for a change in scope of the work, however, the Contractor will be paid for the quantity actually furnished at the unit price bid for the work.
- Layout of slope protection system may be varied to suit ground conditions in the field as directed by the Engineer.
- The embankment configuration shown shall be the minimum that must be placed and compacted prior to construction of the abutments.
- The calculated Seal Coat thickness is 4.0' based on the Cofferdam Design Water Elevation (CDWE), streambed elevation, bottom of footing elevation, and estimated sheeting lip elevation. Cofferdam design details and proposed changes in seal coat thickness shall be submitted to the Engineer for approval with the cofferdam design.

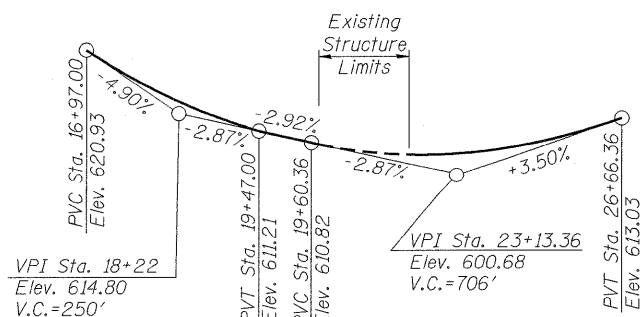
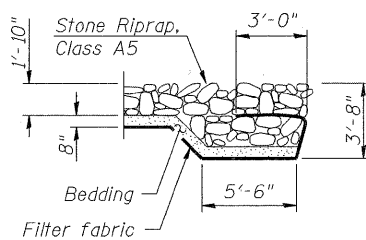
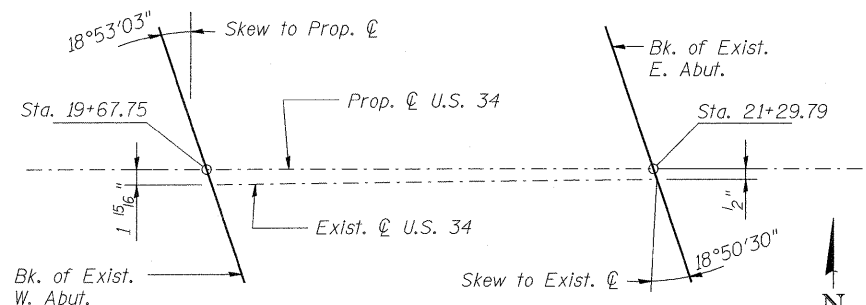
Cofferdam (Type 2) (Location - 1)	Pier 1	US end
Cofferdam (Type 2) (Location - 2)	Pier 1	DS end
Cofferdam (Type 2) (Location - 3)	Pier 2	US end
Cofferdam (Type 2) (Location - 4)	Pier 2	DS end

**TOTAL BILL OF MATERIAL**

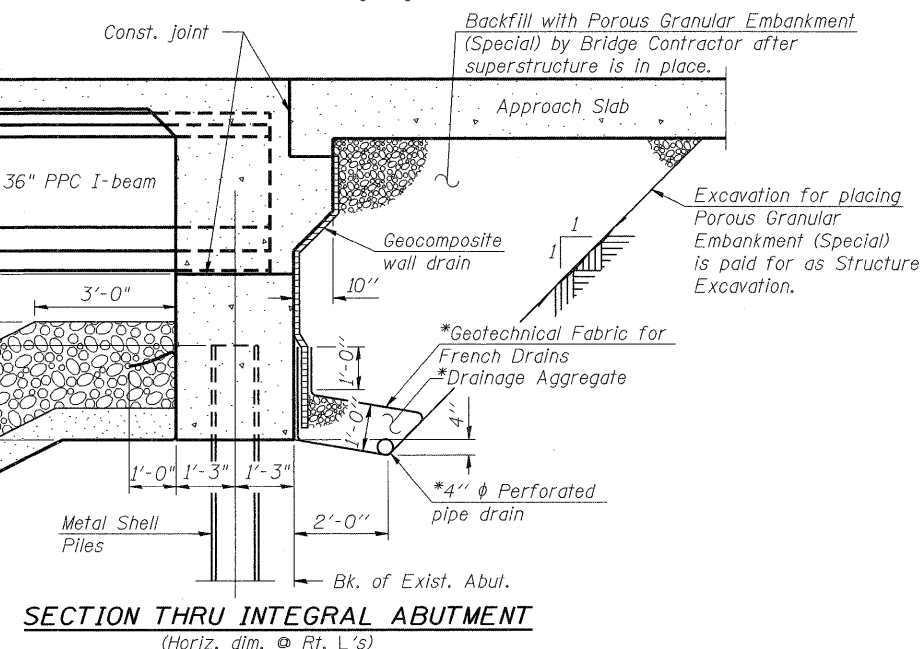
Item	Unit	Super	Sub	Total
Stone Riprap, Class A5	Sq. Yd.		597	597
Filter Fabric	Sq. Yd.		805	805
Removal of Existing Superstructures	Each	1		1
Concrete Removal	Cu.Yd.		19.3	19.3
Structure Excavation	Cu.Yd.		200	200
Cofferdam Excavation	Cu.Yd.		176	176
Cofferdam (Type 2) (Location - 1)	Each		1	1
Cofferdam (Type 2) (Location - 2)	Each		1	1
Cofferdam (Type 2) (Location - 3)	Each		1	1
Cofferdam (Type 2) (Location - 4)	Each		1	1
Concrete Structures	Cu.Yd.		183.0	183.0
Concrete Superstructure	Cu.Yd.	508.2		508.2
Bridge Deck Grooving	Sq. Yd.		989	989
Seal Coat Concrete	Cu. Yd.		144	144
Protective Coat	Sq. Yd.		13661	13661
Furnishing and Erecting Precast Prestressed Concrete I-Beams, 36 in.	Foot		1113	1113
Reinforcement Bars, Epoxy Coated	Pound	109440	20430	129870
Bar Splicers	Each		532	532
Bicycle Railing	Foot		222	222
Parapet Railing	Foot		222	222
Furnishing Metal Shell Piles, 14"x0.312"	Foot		630	630
Driving Piles	Foot		630	630
Test Pile Metal Shells	Each		4	4
Name Plates	Each		1	1
Epoxy Crack Injection	Foot		180	180
Geocomposite Wall Drain	Sq. Yd.		94	94
Porous Granular Embankment, Special	Cu.Yd.		150	150
Mechanical Splicers	Each		16	16
Deck Slab Repair (Partial)	Sq. Yd.		2	2
Drainage Scuppers, DS-11	Each		6	6
Temporary Sheet Piling	Sq. Ft.		540	540
Pipe Underdrains for Structures, 4"	Foot		144	144

**INDEX OF SHEETS**

- S-1 General Plan and Elevation
- S-2 General Data
- S-3 Stage Construction Details
- S-4 Temporary Concrete Barrier for Stage Construction
- S-5 Removal and Repair Plan
- S-6 Removal and Repair Plan
- S-7 Top of Slab Elevations
- S-8 Top of Slab Elevations
- S-9 Top of Slab Elevations
- S-10 Top of Approach Slab Elevations
- S-11 Top of Approach Slab Elevations
- S-12 Stage IA Deck Plan and Cross Section
- S-13 Stage I Deck Plan and Cross Section
- S-14 Superstructure Details
- S-15 Superstructure Details
- S-16 Superstructure Details
- S-17 Superstructure Details
- S-18 Bicycle Railing
- S-19 Drainage Scupper, DS-11
- S-20 Bridge Approach Slab Details
- S-21 Bridge Approach Slab Details
- S-22 Framing Plan - Prestressed Beam
- S-23 Prestressed Beam Details
- S-24 Prestressed Beam Details
- S-25 Prestressed Beam Details
- S-26 Prestressed Beam Details
- S-27 West Abutment
- S-28 West Abutment
- S-29 West Abutment Details
- S-30 East Abutment
- S-31 East Abutment
- S-32 East Abutment Details
- S-33 Pier 1
- S-34 Pier 1
- S-35 Pier 1 Details
- S-36 Pier 2
- S-37 Pier 2
- S-38 Pier 2 Details
- S-39 Metal Shell Piles
- S-40 Bar Splicer Assembly and Mechanical Splicer Details
- S-41 Concrete Parapet Slipforming Option
- S-42 Soil Boring Logs
- S-43 Soil Boring Logs



**SECTION A-A**



\*Included in the cost of Pipe Underdrains for Structures.  
 Note:  
 All drainage system components shall extend to 2'-0" from the end of each wingwall except an outlet pipe shall extend until intersecting with the side slopes, except for the northwest wingwall (see Sheet S-27 for details). The pipes shall drain into concrete headwalls. (See Article 601.05 of the Standard Specifications and Highway Standard 601101).

SEC GROUP, INC.  
 COMPANY NAME:  
 PROJECT CONTACT:  
 CLIENT:  
 DATE PLOTTED:  
 FILE NAME:  
 PLOT DRIVER:  
 PEN TABLE:

**SEC Group, Inc.**  
 An IBM System Company  
 420 N. Front Street,  
 Moline, IL 61705-2138  
 L 315.385.1779 F 315.385.1781  
 www.secgroup.com  
 144/14/14/2011 13:29 PM  
 0470051-con.dgn  
 paf:ah  
 Struct 22x34.tbl

USER NAME = whood  
 DESIGNED - MGH  
 CHECKED - SSM  
 DRAWN - WJH  
 CHECKED - RGD  
 PLOT SCALE =  
 PLOT DATE = 10/14/2011

DESIGNED - MGH  
 CHECKED - SSM  
 DRAWN - WJH  
 CHECKED - RGD  
 REVISED -  
 REVISED -  
 REVISED -  
 REVISED -

**STATE OF ILLINOIS  
 DEPARTMENT OF TRANSPORTATION**

**GENERAL DATA  
 STRUCTURE NO. 047-0051**  
 SHEET NO. S-2 OF S-43 SHEETS

F.A.P. RTE.	SECTION	COUNTY	TOTAL SHEETS	SHEET NO.
591	14BR-1	KENDALL	429	252
CONTRACT NO. 66985			ILLINOIS FED. AID PROJECT	