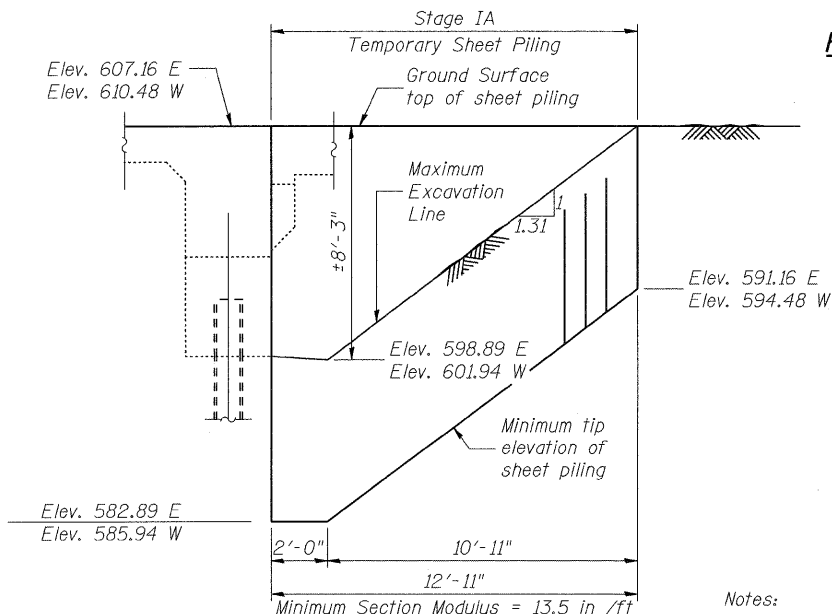


- Notes:
- Any reinforcement bars that are damaged during concrete removal operations shall be repaired or replaced using an approved bar splicer or anchorage system. Cost included in pay item Removal Of Existing Superstructures.
  - Exist. Reinforcement and Piles extending into removal area shall be cleaned, straightened, and incorporated into the new construction. Cost included in pay item Concrete Removal.
  - Removal of the existing beam shall be included in the cost for Removal of Existing Superstructures.
  - Quantities of Deck Slab Repair (Partial) and Epoxy Crack Injection are approximate. Locations will be determined by the Resident Engineer. Actual repair locations shall be shown on the as-built plans. Contractor will be paid for the quantities furnished.
  - Cost for Partial Depth Sawcut, 1" included in Removal of Existing Superstructure.
  - Approach Slab Removal is included in the roadway plans.

- LEGEND:**
- Indicates area of Approach Slab Removal.
  - Preserve and reuse existing bars between deck and approach slab.
  - Indicates area of Concrete Removal.
  - Indicates area of Removal of Existing Superstructures.
  - Indicates area of Deck Removal for Reinforcement Splicing. Cost included in Removal of Existing Superstructures.
  - Indicates area for Deck Slab Repair (Partial).
  - Indicates location for Epoxy Crack Injection.

\*Measured at Back of West Abutment perpendicular to Proposed C U.S. 34.  
 \*\*Measured at Back of East Abutment perpendicular to Proposed C U.S. 34.



**TEMPORARY SHEET PILING**

Notes:  
 If the Contractor chooses to alter the temporary cantilevered sheet piling design requirements shown on the plans, a design submittal including plan details and calculations will be required for review and acceptance by the Engineer.

**BILL OF MATERIAL**

ITEM	UNIT	TOTAL
Removal of Exist. Superstructures	Ea.	1
Deck Slab Repair (Partial)	Sq. Yd.	2
Epoxy Crack Injection	Ft.	180
Temporary Sheet Piling	Sq. Ft.	540

SEC GROUP INC.  
 PROJECT CONTACT: Robert G. Davies  
 CLIENT: ILLINOIS DEPARTMENT OF TRANSPORTATION  
 DATE PLOTTED: 10/14/2011 11:08:29 AM  
 FILE NAME: 0470051-Rem.dgn  
 PLOT DRIVER: pcfplot  
 PEN TABLE: Struct\_202.ctb

**SEC Group, Inc.**  
 An HBI Group Company  
 420 N. Front Street  
 Mokena, IL 60450-2138  
 L 815.385.1779 F 815.385.1781  
 www.secgroup.com

**PB Americas, Inc.**  
 230 WEST MONROE STREET,  
 SUITE 900  
 CHICAGO, IL 60606

USER NAME = whood	DESIGNED - MGH	REVISIONS -
PLOT SCALE =	CHECKED - SSM	REVISIONS -
PLOT DATE = 10/14/2011	DRAWN - WJH	REVISIONS -
	CHECKED - RGD	REVISIONS -

**STATE OF ILLINOIS  
 DEPARTMENT OF TRANSPORTATION**

**REMOVAL AND REPAIR PLAN  
 STRUCTURE NO. 047-0051**

F.A.P. RTE. 591	SECTION 14BR-1	COUNTY KENDALL	TOTAL SHEETS 429	SHEET NO. 255
			CONTRACT NO. 66985	
ILLINOIS FED. AID PROJECT				

SHEET NO. S-5 OF S-43 SHEETS