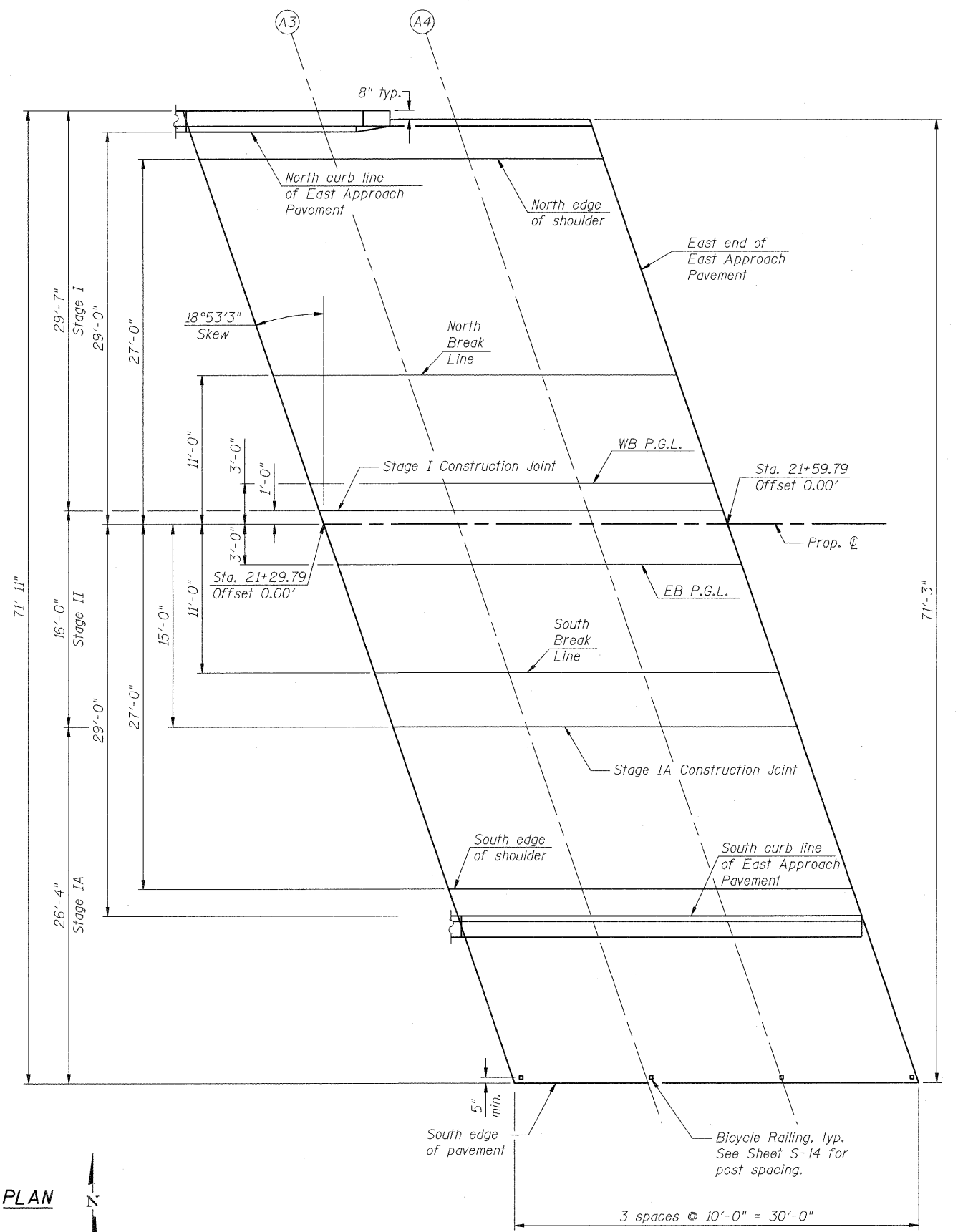


WEST APPROACH



EAST APPROACH



COMPANY NAME: SEC GROUP, INC.
 PROJECT CONTACT: Robert C. Davies
 CLIENT: ILLINOIS DEPARTMENT OF TRANSPORTATION
 DATE PLOTTED: 10/14/2011 10:06:57 AM
 FILE NAME: 0470051-18a01.dgn
 PLOT DRIVER: pldrvr
 PEN TABLE: Structr_2014.tbl

SEC Group, Inc.
 An IRI Group Company
 420 N. First Street,
 Maywood, IL 60050-2138
 L 630.385.1778 F 630.385.1791
 www.secgroup.com
 McHenry, IL; Morrisville, IL; West Laramie, IL; Chicago, IL

PB Americas, Inc.
 230 WEST MONROE STREET,
 SUITE 900
 CHICAGO, IL. 60606

USER NAME = rwhood	DESIGNED - JPG	REVISED -
PLOT SCALE =	CHECKED - SSM	REVISED -
PLOT DATE = 10/14/2011	DRAWN - RCB	REVISED -
	CHECKED - RGD	REVISED -

**STATE OF ILLINOIS
 DEPARTMENT OF TRANSPORTATION**

**TOP OF APPROACH SLAB ELEVATIONS
 STRUCTURE NO. 047-0051**
 SHEET NO. S-10 OF S-43 SHEETS

F.A.P. RTE.	SECTION	COUNTY	TOTAL SHEETS	SHEET NO.
591	14BR-1	KENDALL	429	260
CONTRACT NO. 66985			[ILLINOIS] FED. AID PROJECT	