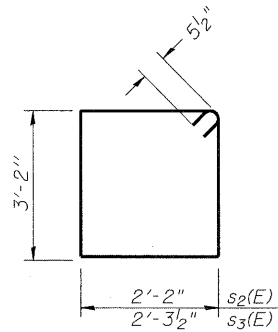
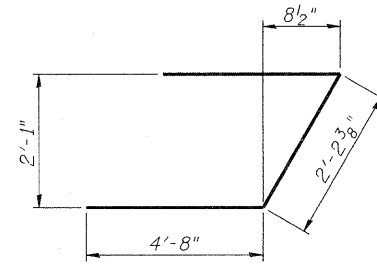


FIELD CUTTING DIAGRAM

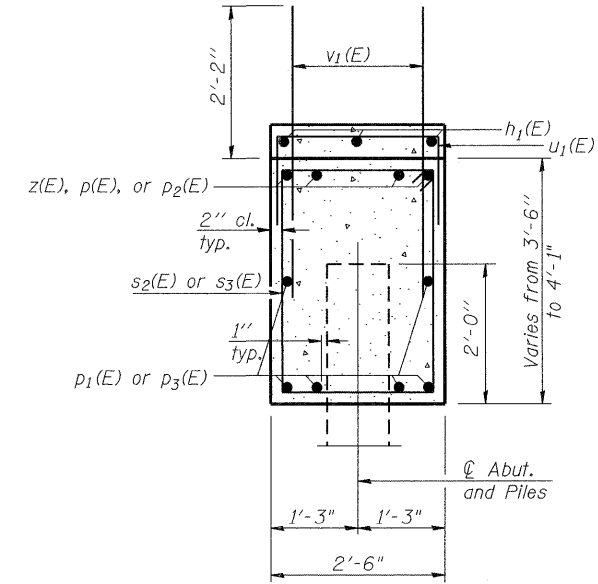
Order $v_2(E)$ and $v_3(E)$ full length.
Cut as shown and use remainder of bars in opposite face.



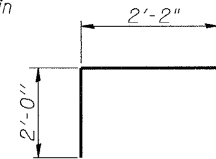
BARS $s_2(E)$ & $s_3(E)$



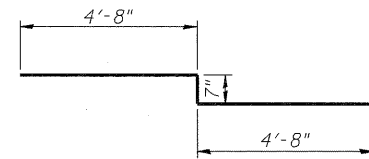
BAR $u(E)$



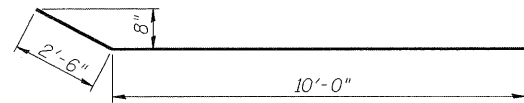
SEC. THRU ABUT.



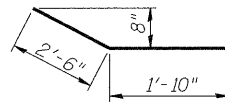
BAR $u_1(E)$



BAR $z(E)$



BAR $h(E)$



BAR $h_4(E)$

PILE DATA WEST ABUTMENT

Type: Metal Shell Piles 14"x0.312"
Nominal Required Bearing: 412 kips
Factored Resistance Available: 226 Kips
Est. Length: 28 Ft.
No. Production Piles: 4
No. Test Piles: 1

Note: Piles for the west abutment shall be driven through 18" to 24" precored holes extending 2' into the existing grade according to article 512.09 (c) of the Standard Specifications. Cost included in Driving Piles.

WEST ABUTMENT BILL OF MATERIALS

Bar	No.	Size	Length	Shape
$h(E)$	27	#5	12'-6"	—/—
$h_1(E)$	3	#5	12'-0"	—/—
$h_4(E)$	8	#5	4'-4"	—/—
$p(E)$	4	#7	15'-0"	—/—
$p_1(E)$	6	#7	12'-8"	—/—
$p_2(E)$	4	#7	25'-5"	—/—
$p_3(E)$	6	#7	24'-0"	—/—
$s_2(E)$	35	#5	11'-7"	□
$s_3(E)$	2	#5	11'-10"	□
$u(E)$	8	#6	11'-7"	—/—
$u_1(E)$	11	#4	6'-2"	□
$v_1(E)$	70	#5	4'-4"	—/—
$v_2(E)$	11	#5	10'-11"	—/—
$v_3(E)$	11	#5	10'-11"	—/—
$v_7(E)$	3	#5	7'-1"	—/—
$z(E)$	4	#8	9'-11"	—/—
Structure Excavation		Cu. Yd.	100	
Concrete Structures		Cu. Yd.	16.3	
Reinforcement Bars, Epoxy Coated		Pound	2530	
Furnishing Metal Shell Piles, 14"x0.312"		Foot	112	
Driving Piles		Foot	112	
Test Pile Metal Shells		Each	1	

COMPANY NAME: SEC GROUP INC.
PROJECT CONTACT: Robert G. Davies
CLIENT: ILLINOIS DEPARTMENT OF TRANSPORTATION
DATE PLOTTED: 10/14/2011 10:05:26 AM
PLOT NUMBER: 0472051-06103.000
PEN TABLE: Struct 20-34.tbl



PB Americas, Inc.
230 WEST MONROE STREET,
SUITE 900
CHICAGO, IL. 60606

USER NAME = whoold	DESIGNED - JPG	REVISED -
PLOT SCALE =	CHECKED - SSM	REVISED -
PLOT DATE = 10/14/2011	DRAWN - WJH	REVISED -
	CHECKED - RGD	REVISED -

**STATE OF ILLINOIS
DEPARTMENT OF TRANSPORTATION**

**WEST ABUTMENT DETAILS
STRUCTURE NO. 047-0051**

SHEET NO. S-29 OF S-43 SHEETS

F.A.P. RTE.	SECTION	COUNTY	TOTAL SHEETS	SHEET NO.
591	14BR-1	KENDALL	429	279
CONTRACT NO. 66985			ILLINOIS FED. AID PROJECT	