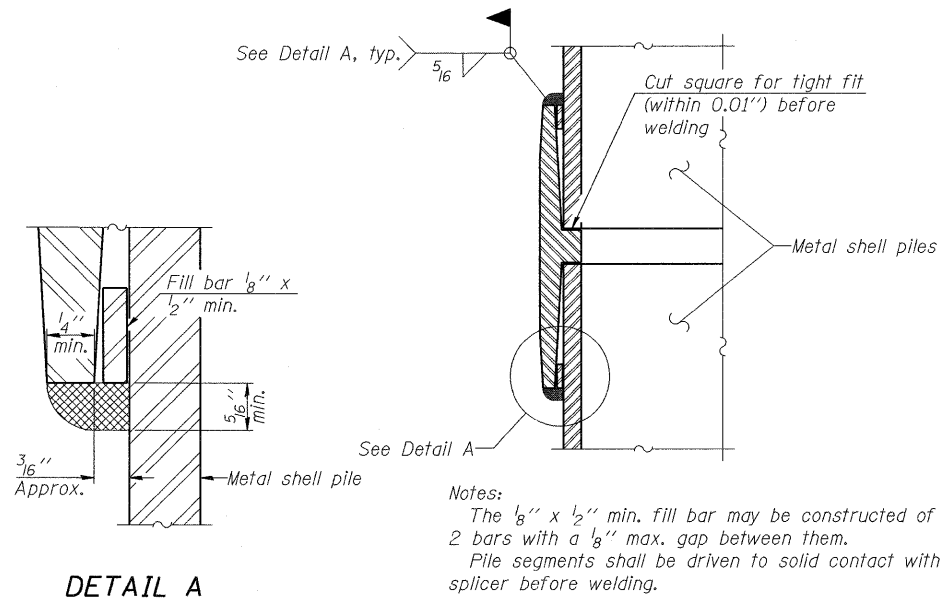


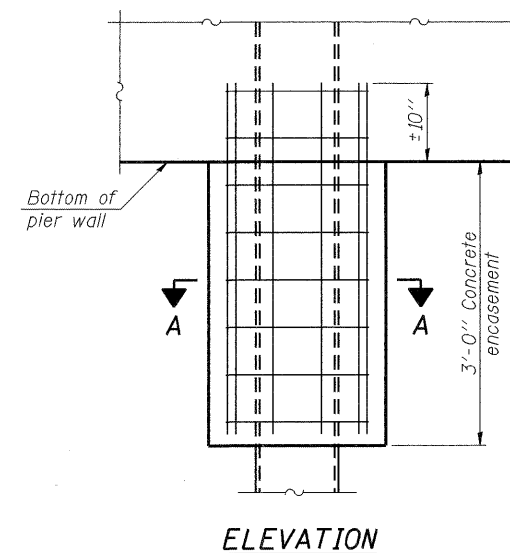
METAL SHELL PILE TABLE

Designation and outside diameter	Wall thickness t	Weight per foot (Lbs./ft.)	Inside volume (yd. ³ /ft.)
PP12	0.179"	22.60	0.0274
PP12	0.250"	31.37	0.0267
PP14	0.250"	36.71	0.0368
PP14	0.312"	45.61	0.0361



DETAIL A

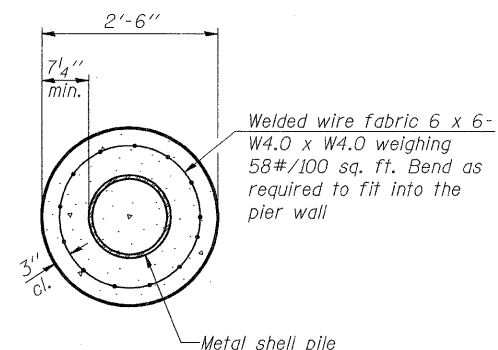
WELDED COMMERCIAL SPLICE



ELEVATION

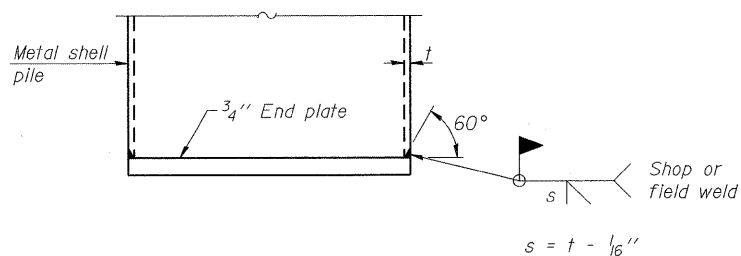
CONCRETE ENCASEMENT AT PIERS

"NOT USED"

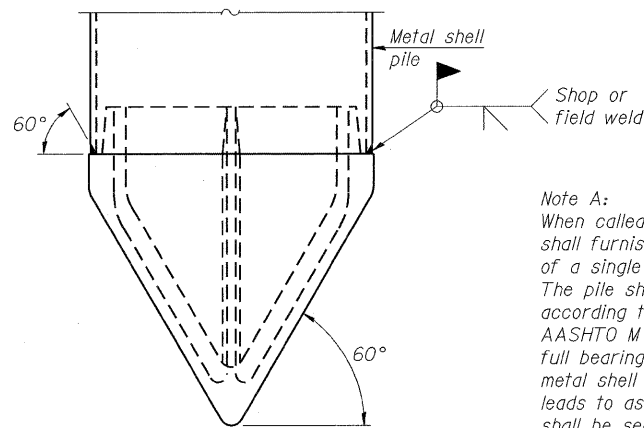


SECTION A-A

Note:
Forms for encasement may be omitted when soil conditions permit.



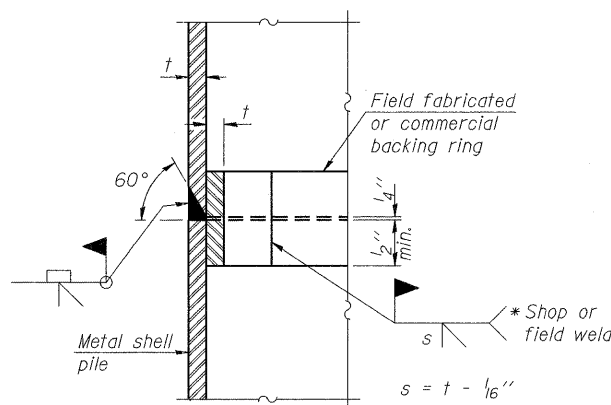
END PLATE ATTACHMENT



METAL SHELL PILE SHOE ATTACHMENT

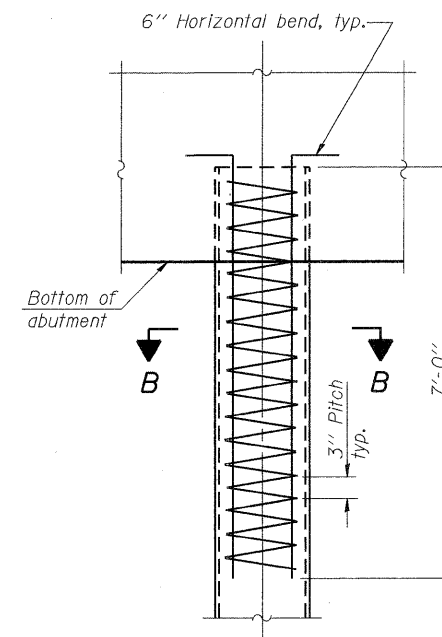
(See Note A)

Note A:
When called for on the plans, the Contractor shall furnish metal shell pile shoes consisting of a single piece conical pile point as shown. The pile shoes shall be cast in one piece steel according to either ASTM A 148 Grade 90-60 or AASHTO M 103 Grade 65-35 and shall provide full bearing over the full circumference of the metal shell pile. The pile shoe shall have tapered leads to assure proper alignment and fitting and shall be secured to the pile with a circumferential weld.



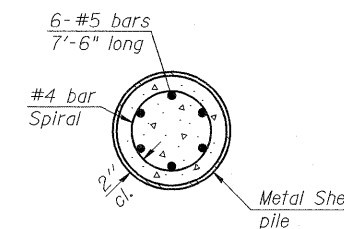
COMPLETE PENETRATION WELD SPLICE

* Field fabricated backing ring may be made from pile shell by removing segment to allow reducing circumference and vertically rejoin with partial joint penetration weld.



ELEVATION

METAL SHELL REINFORCEMENT AT ABUTMENTS



SECTION B-B

Note:
The metal shell piles shall be according to ASTM A 252 Grade 3.

COMPANY NAME: SEC GROUP, INC.
PROJECT CONTACT: ROBERT G. DAVIES
CLIENT: ILLINOIS DEPARTMENT OF TRANSPORTATION
DATE PLOTTED: 10/14/2011 11:10:05 AM
FILE NAME: 0470051-MS-001
PEN TABLE: 22x34.tbl

F-MS 7-1-10

SEC Group, Inc.
An IRI Group Company
422 N. First Street,
Naperville, IL 60563-2138
T. 815.385.1778 F. 815.385.1781
www.secgroup.com

PB Americas, Inc.
230 WEST MONROE STREET,
SUITE 900
CHICAGO, IL. 60606

USER NAME = whood	DESIGNED - JPG	REVISED -
PLOT SCALE =	CHECKED - SSM	REVISED -
PLOT DATE = 10/14/2011	DRAWN - WJH	REVISED -
	CHECKED - RGD	REVISED -

**STATE OF ILLINOIS
DEPARTMENT OF TRANSPORTATION**

**METAL SHELL PILES
STRUCTURE NO. 047-0051**

SHEET NO. S-39 OF S-43 SHEETS

F.A.P. RTE.	SECTION	COUNTY	TOTAL SHEETS	SHEET NO.
591	14BR-1	KENDALL	429	289
			CONTRACT NO. 66985	

ILLINOIS FED. AID PROJECT