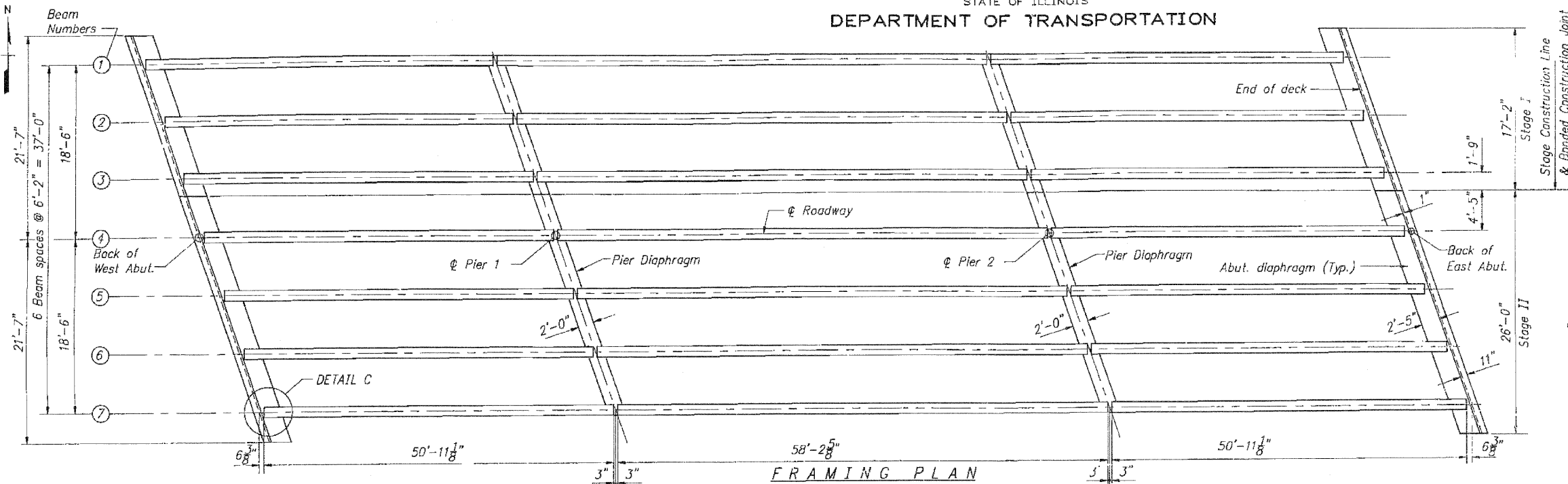
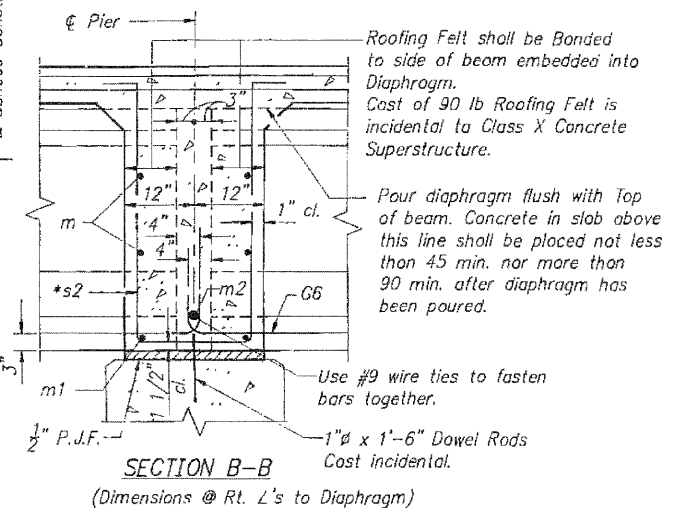


STATE OF ILLINOIS
DEPARTMENT OF TRANSPORTATION

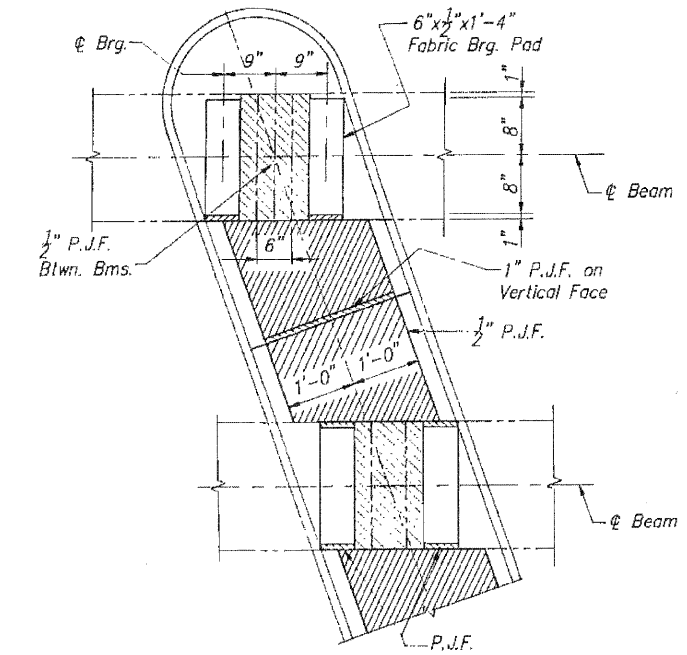
ROUTE NO.	SECTION	COUNTY	TOTAL SHEETS	SHEET NO.	SHEET NO. 9
F.A.P. 591	*	KENDALL	51	28	OF 17 SHEETS
FEDERAL ROAD DIST. NO. ILLINOIS FEDERAL AID PROJECT- * (14R)RS-2 & 14BR-1					



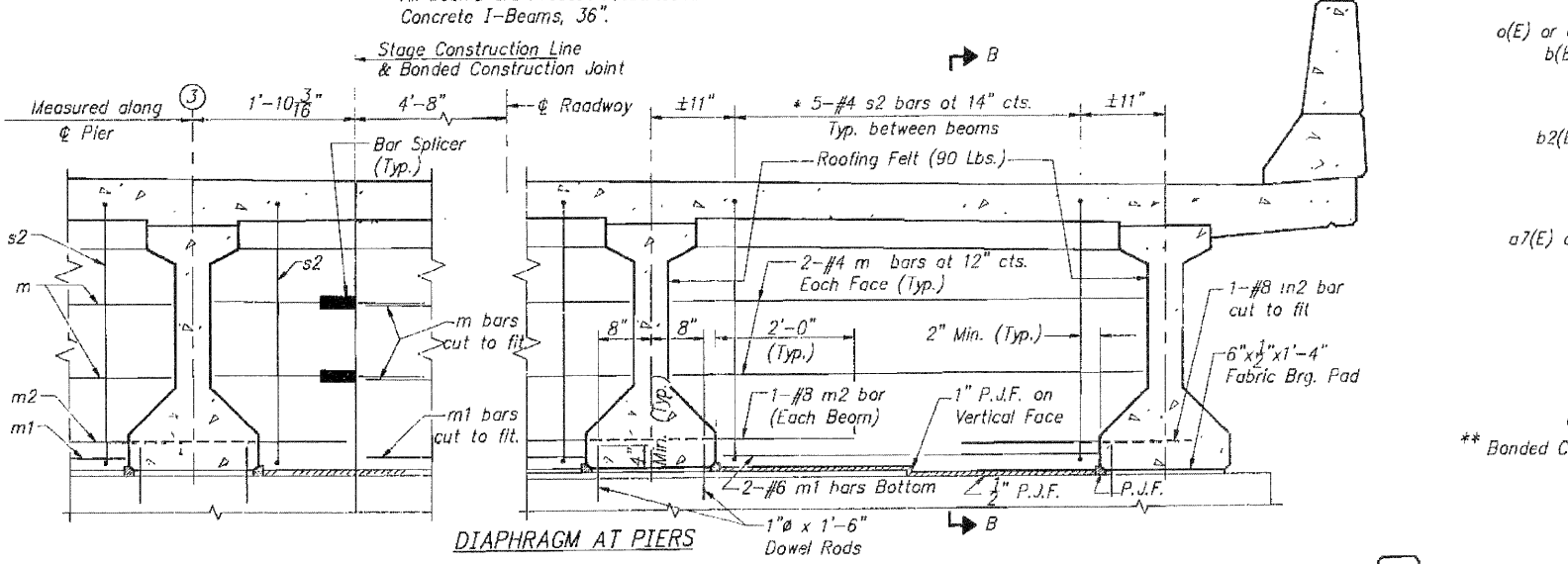
FRAMING PLAN
All beams are Precast Prestressed Concrete I-Beams, 36".



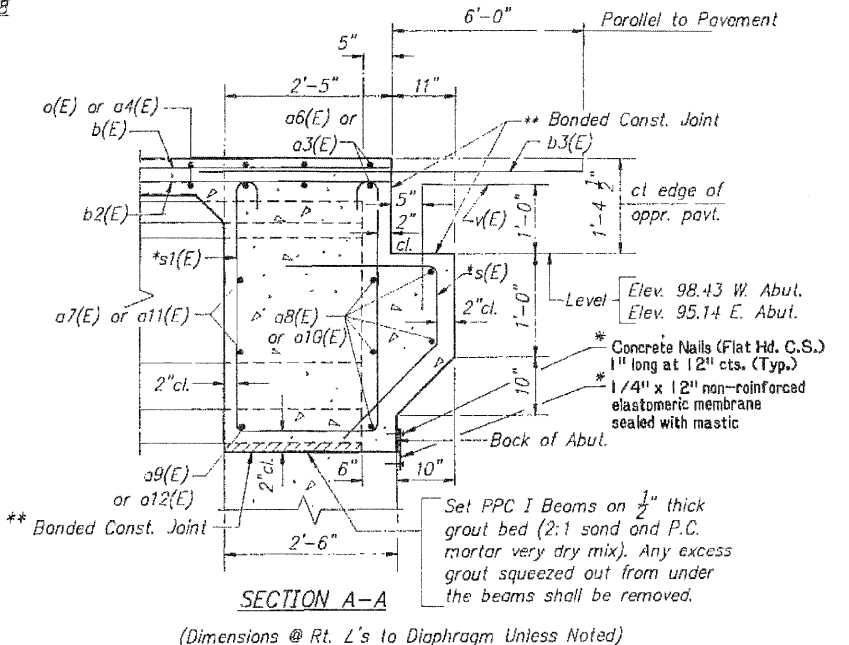
SECTION B-B
(Dimensions @ Rt. L's to Diaphragm)



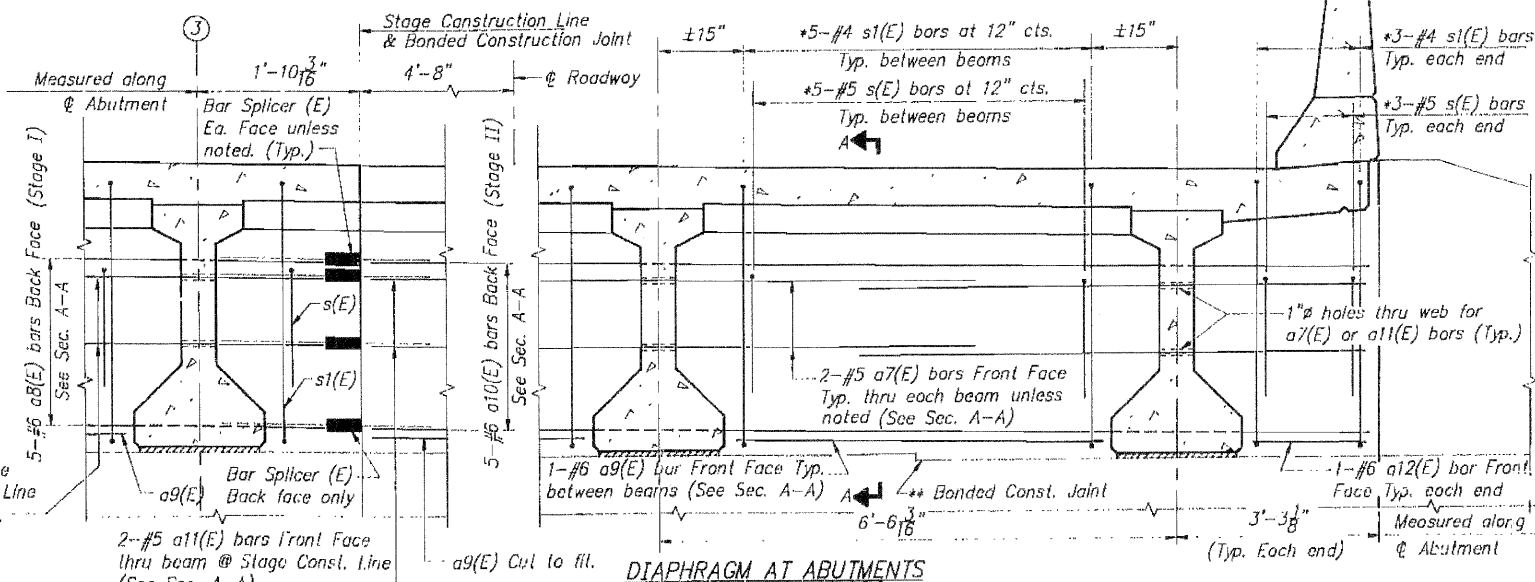
BEARING PADS & P.J.F. AT PIERS



DIAPHRAGM AT PIERS



SECTION A-A
(Dimensions @ Rt. L's to Diaphragm Unless Noted)



DIAPHRAGM AT ABUTMENTS

- NOTES:**
- Reinforcement Bars and Class X Concrete Superstructure are billed with superstructure on sheet #6. For spacing of b3(E) and v(E) bars see Plan on sheet #5.
 - * Place s(E), s1(E) and s2(E) bars at right angles to Abutment / Pier.
 - ** Bonded Construction Joint in accordance with Article 504.13(a)(2) of Std. Spec's.

MIN. BAR LAP
#5 Bar = 1'-8"

* Cost is incidental to Class X Concrete

HAZELET + ERDAL, INC.
CONSULTING ENGINEERS
FILE NUMBER 177
DRAWN BY: RCB/1/191
CHECKED BY: LRM
APPROVED BY: [Signature]

DETAIL C
(Typ. for all beams)