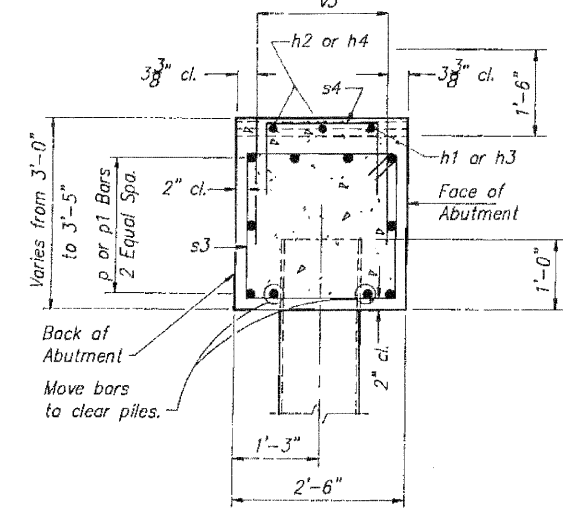
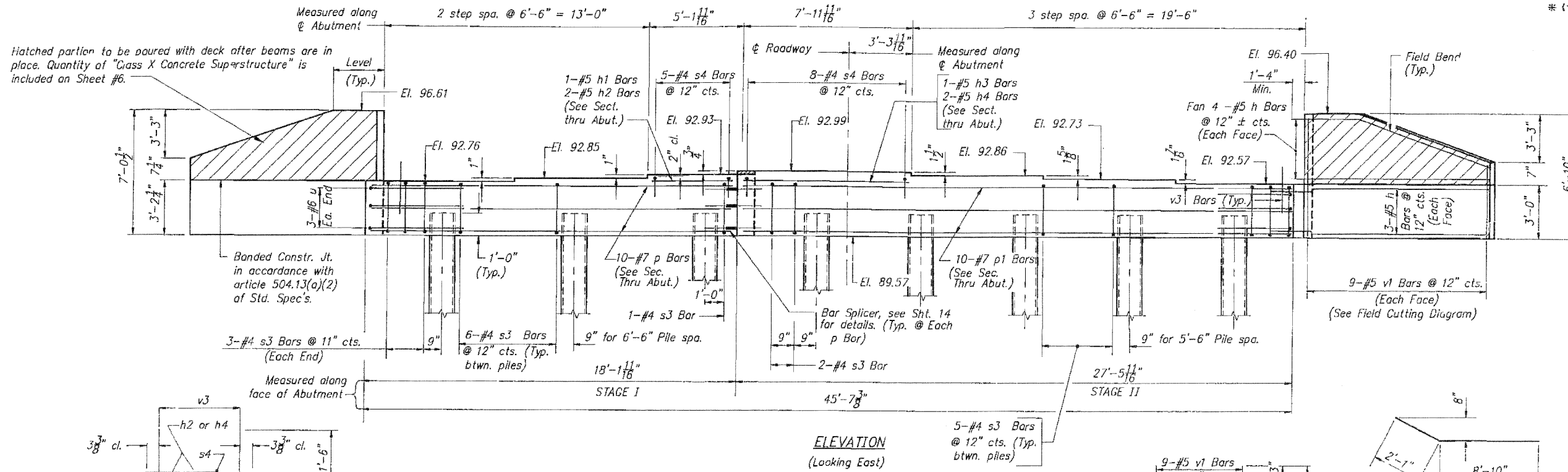


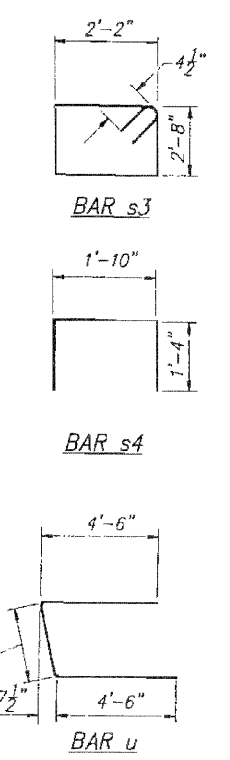
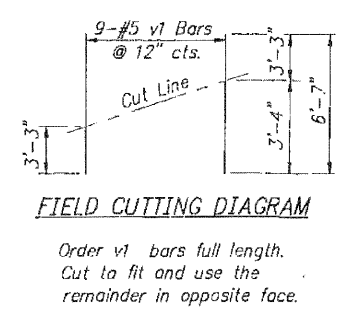
STATE OF ILLINOIS  
DEPARTMENT OF TRANSPORTATION

ROUTE NO.	SECTION	COUNTY	TOTAL SHEETS	SHEET NO.
F.A.P. 591	#	KENDALL	51	30
FEDERAL ROAD DIST. NO.		ILLINOIS	FEDERAL AID PROJECT-	
* (14R)RS-2 & 14BR-1				

SHEET NO. 11  
OF 17 SHEETS



**DRAWINGS PROVIDED FOR INFORMATION ONLY. DRAWINGS ARE NOT "AS-BUILT"**

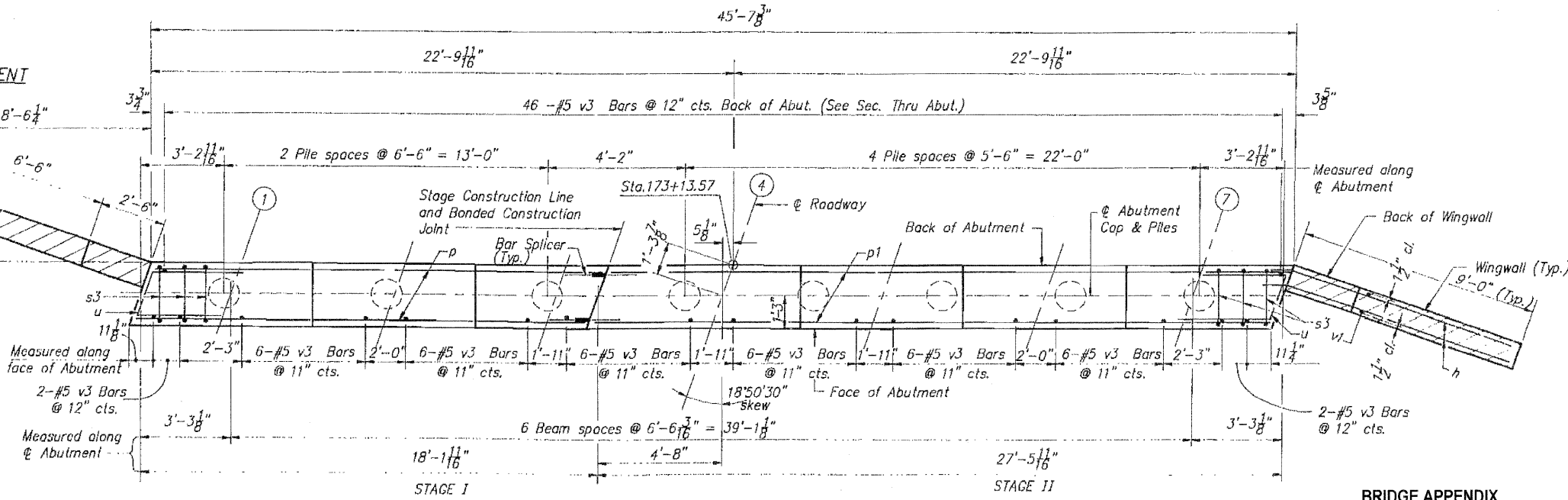


BILL OF MATERIAL

Bar	No.	Size	Length	Shape
h	28	#5	10'-11"	—
h1	1	#5	4'-5"	—
h2	2	#5	4'-9"	—
h3	1	#5	7'-11"	—
h4	2	#5	7'-3"	—
p	10	#7	17'-9"	—
p1	10	#7	27'-1"	—
s3	41	#4	10'-5"	∩
s4	13	#4	4'-6"	∩
u	6	#6	11'-2"	∩
v1	18	#5	6'-7"	—
v3	86	#5	3'-0"	—
Reinforcement Bars		Lbs.	2090	
Class X Concrete		Cu. Yds.	15.4	
Furnishing Metal Pile Shells 14"		Lin. Ft.	224	
Driving & Filling Shells		Lin. Ft.	224	
Test Pile Metal Shells		Each	1	

PILE DATA  
Type: Metal Pile Shell 14"  
Capacity: 45 Ton  
Est. Length: 32 Ft.  
No. Required: 7 + 1 Test Pile

HAZELET + ERDAL, INC.  
CONSULTING ENGINEERS  
FILE NUMBER 577  
DRAWN BY: KCR/10/11  
CHECKED BY: LRM  
APPROVED BY: DLO



BRIDGE APPENDIX  
EXISTING STRUCTURE - ORIGINAL PLANS  
5 OF 7

EAST ABUTMENT  
F.A.P. ROUTE 591 SECTION 14BR-1  
KENDALL COUNTY  
STA. 172+32.50

SHEET NO 293E