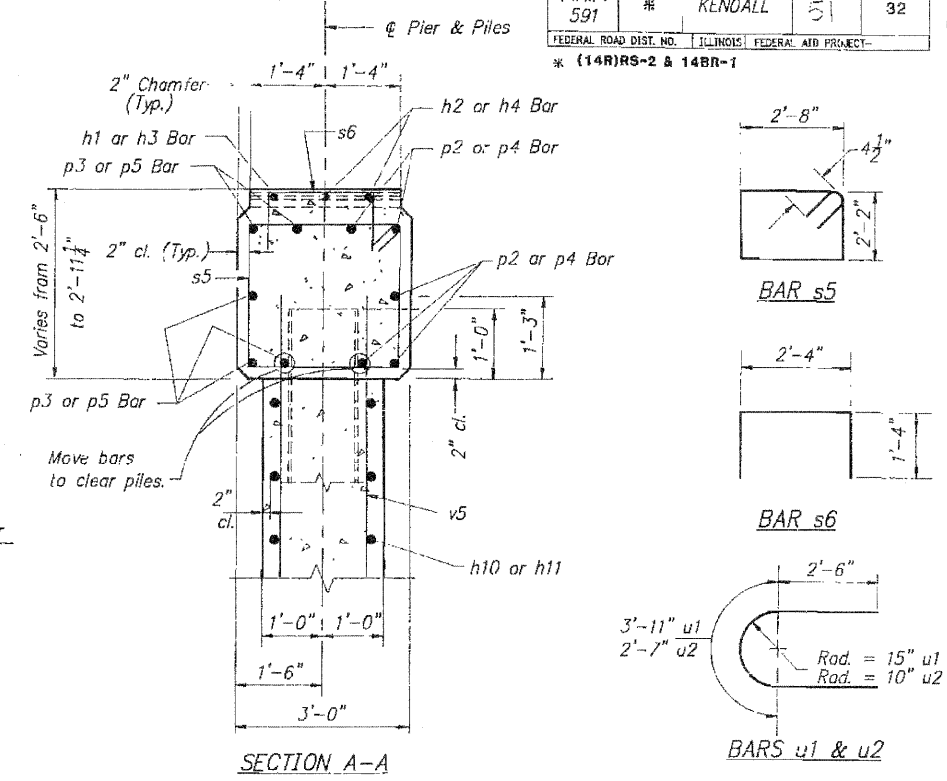
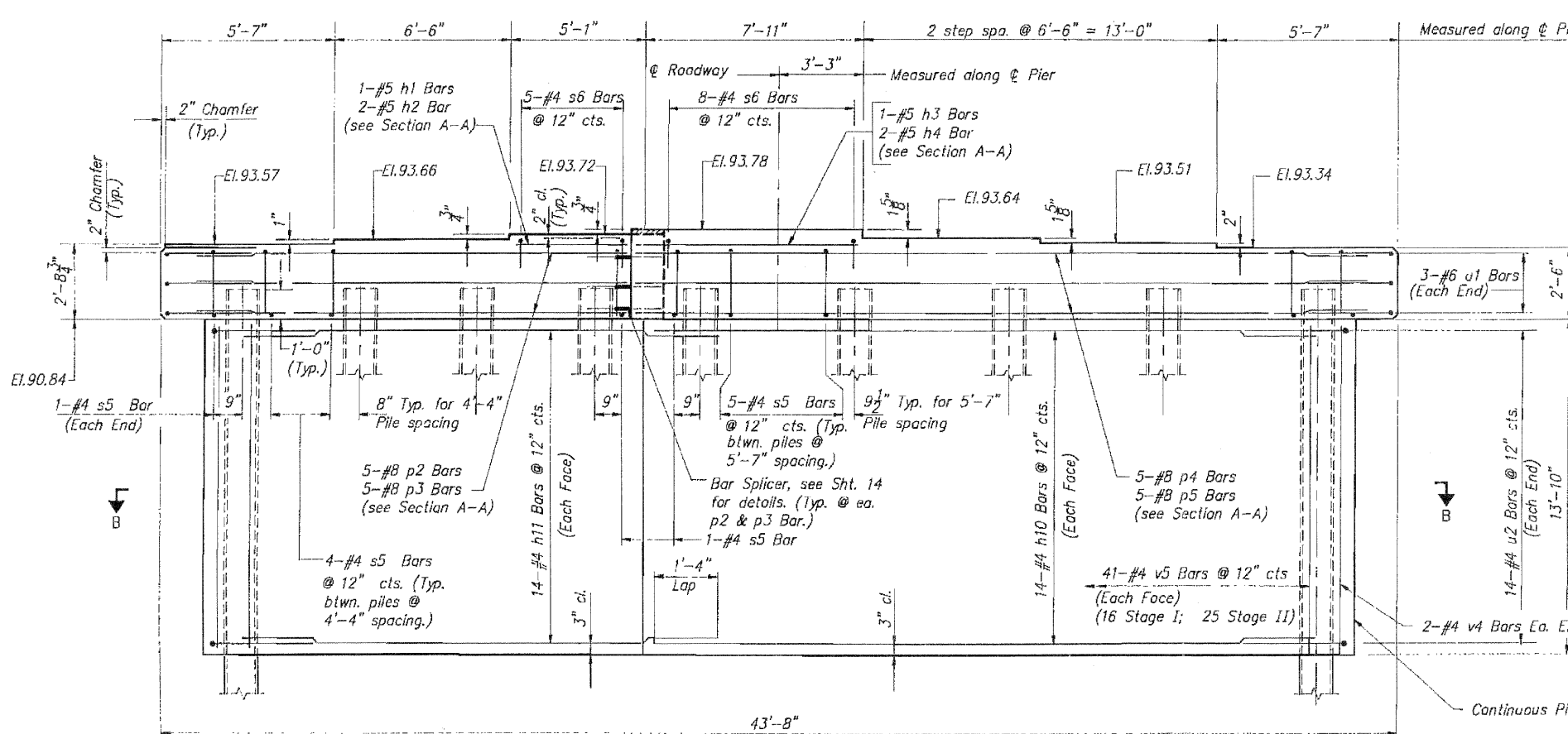
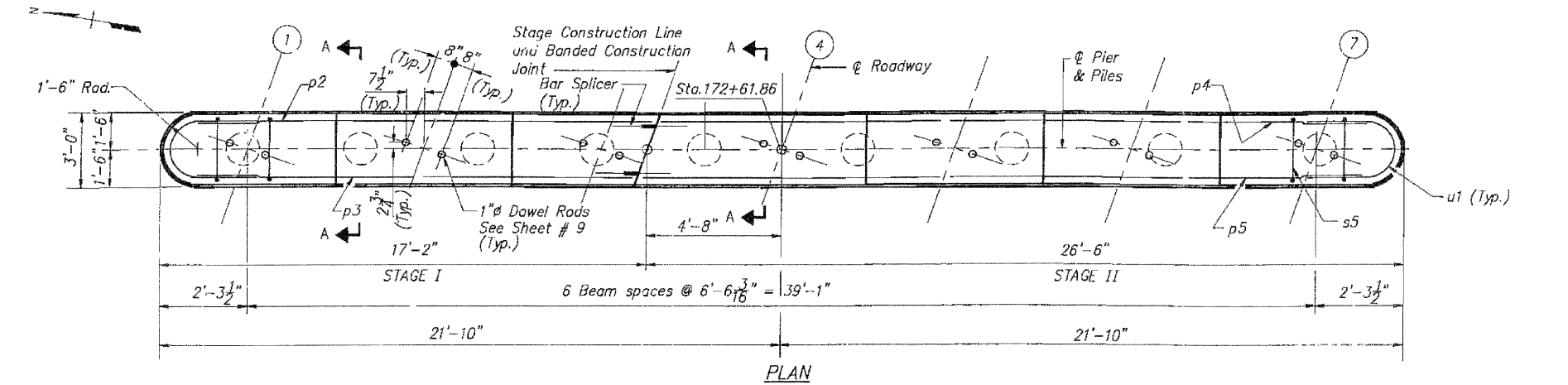


STATE OF ILLINOIS  
DEPARTMENT OF TRANSPORTATION

ROUTE NO. F.A.P. 591	SECTION #	COUNTY KENOALL	TOTAL SHEETS 51	SHEET NO. 32	SHEET NO. 13 OF 17 SHEETS
FEDERAL ROAD DIST. NO. ILLINOIS FEDERAL AID PROJECT * (14R)RS-2 & 14BR-1					



DRAWINGS PROVIDED FOR  
INFORMATION ONLY.  
DRAWINGS ARE NOT  
"AS-BUILT"

**BILL OF MATERIAL**

Bar	No.	Size	Length	Shape
h1	1	#5	4'-5"	—
h2	2	#5	4'-9"	—
h3	1	#5	7'-11"	—
h4	2	#5	7'-3"	—
h10	28	#4	24'-0"	—
h11	28	#4	16'-4"	—
p2	5	#8	15'-10"	—
p3	5	#8	15'-0"	—
p4	5	#8	24'-4"	—
p5	5	#8	25'-2"	—
s5	36	#4	10'-5"	□
s6	13	#4	5'-0"	□
u1	6	#6	8'-11"	—
u2	28	#4	7'-7"	—
v5	86	#4	14'-10"	—
Reinforcement Bars		Lbs.	3230	
Class X Concrete		Cu. Yds.	49.5	
Furnishing Metal Pile Shells 14"		Lin. Ft.	297	
Driving & Filling Shells		Lin. Ft.	297	

Notes:  
All edges shall have standard 3/4" chamfer except as noted.  
Space reinforcement in cop to miss dowel rods.  
Pour steps monolithically with cop.

**PILE DATA**  
Type: Metal Shell 14"  
Capacity: 45 Ton  
Est. Length: 33 Ft. (Min Tip El. 59.0)  
No. Required: 9

BRIDGE APPENDIX  
EXISTING STRUCTURE - ORIGINAL PLANS  
7 OF 7

PIER 2  
F.A.P. ROUTE 591 SECTION 14BR-1  
KENDALL COUNTY  
STA. 172+32.50

HAZELET + ERDAL, INC.  
CONSULTING ENGINEERS  
FILE NUMBER 577  
DRAWN BY: R.D./H.P.  
CHECKED BY: L.M.  
APPROVED BY: [Signature]

SHEET NO  
293G