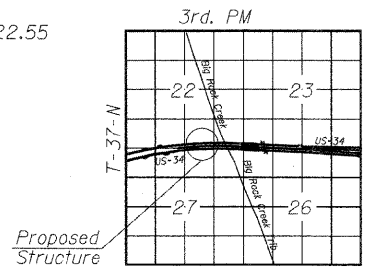


Bench Mark:  
 (BM#299) Railroad spike in power pole, North side of center line US 34  
 Sta. 59+72.36, Offset 49.27' Lt.; Elev. 646.929.  
 Existing Structure: None.

**CURVE DATA**  
 (U.S. Rte 34 P11-1)  
 P.I. Sta. = 12+39.83  
 $\Delta = 18^{\circ}-54'-33''$  (RT)  
 $D = 1^{\circ}-31'-40''$   
 $T = 624.48'$   
 $L = 1,237.60'$   
 $E = 51.64'$   
 $e = 2.2\%$   
 $R = 3,750.00'$   
 P.C. Sta. = 6+15.36  
 P.T. Sta. = 18+52.96  
 $T.R. = 66.6'$   
 $S.E. \text{ Runoff} = 73.3'$   
 S.E. Removed from Sta 18+16.33 to Sta 19+56.19

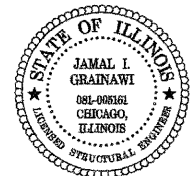
**DESIGN SPECIFICATIONS**

2002 AASHTO  
**DESIGN STRESSES**  
**FIELD UNITS**  
 $f'_c = 3,500 \text{ psi}$   
 $f_y = 60,000 \text{ psi}$  (Reinforcement)  
 $f_y = 50,000 \text{ psi}$  (AASHTO M270 Grade 50) (Soldier Piles)



**LOCATION SKETCH**

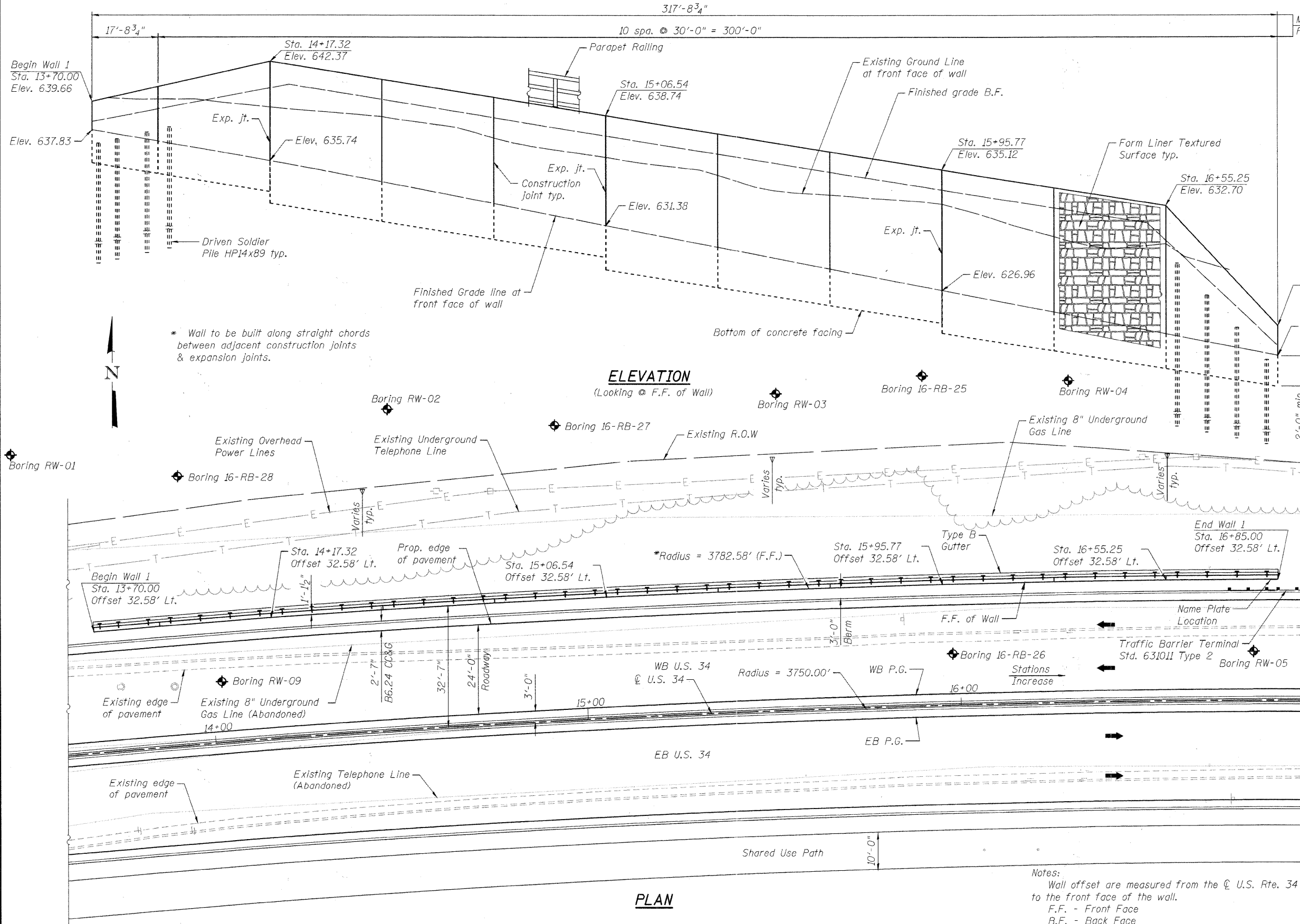
**APPROVED**  
 FOR STRUCTURAL ADEQUACY ONLY  
*Jamal I. Grainawi*  
 ENGINEER OF BRIDGES AND STRUCTURES



Signed *Jamal I. Grainawi*  
 JAMAL I. GRAINAWI, S.E. II. Lic. No. 081-006161  
 Expires 11-30-2012  
 Date MAY 6, 2011

**GENERAL PLAN & ELEVATION**  
**U.S. ROUTE 34**  
**F.A.P RTE. 591 - SEC. 14R-1**  
**KENDALL COUNTY**  
**STATION 13+70.00 TO 16+85.00**  
**STRUCTURE NO. 047-8800**

Notes:  
 Wall offset are measured from the  $\odot$  U.S. Rte. 34 to the front face of the wall.  
 F.F. - Front Face  
 B.F. - Back Face



**PLAN**

STATE OF ILLINOIS  
 DEPARTMENT OF TRANSPORTATION

GENERAL PLAN & ELEVATION  
 STRUCTURE NO. 047-8800

SHEET NO. 1 OF 13 SHEETS

F.A.P. RTE.	SECTION	COUNTY	TOTAL SHEETS	SHEET NO.
591	13R-2+14R-1 & BR-1+15R-1	KENDALL	429	294
			CONTRACT NO. 66985	
ILLINOIS FED. AID PROJECT				

T:\16829-PrinthePkw-Ph2\StructCadd\PreFinal\US34 Retaining Wall 1\0478800-66985-001-GPE.dgn 05-MAY-2011 10:31

**PB Americas, Inc.**  
 230 WEST MONROE STREET,  
 SUITE 300  
 CHICAGO, IL 60606  
 (312)782-8150

FILE NAME = 0478800-66985-001-GPE.dgn	DESIGNED - Y. Ali	REVISED -
PLOT SCALE = NONE	CHECKED - M. Shaikh	REVISED -
PLOT DATE = 5/5/2011	DRAWN - H. Alkhatib	REVISED -
	CHECKED - J. GRAINAWI	REVISED -