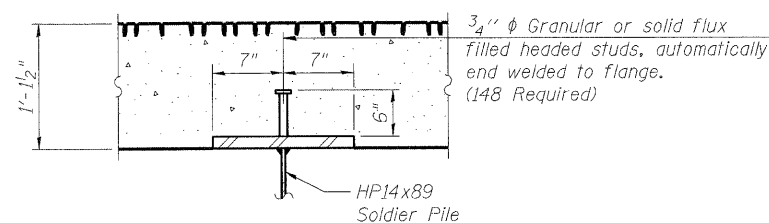
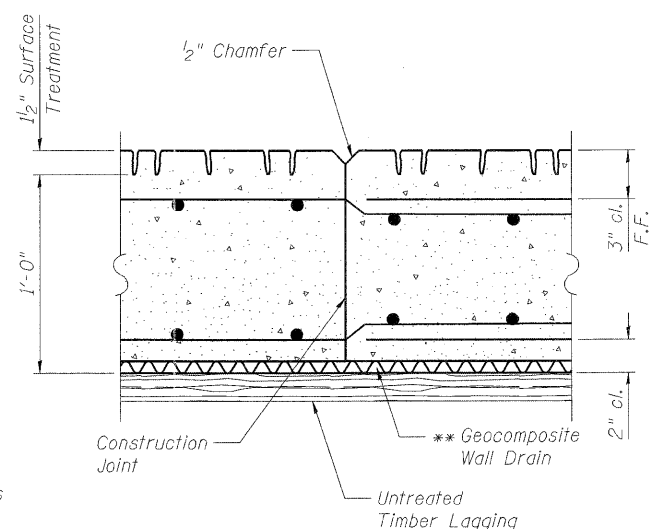


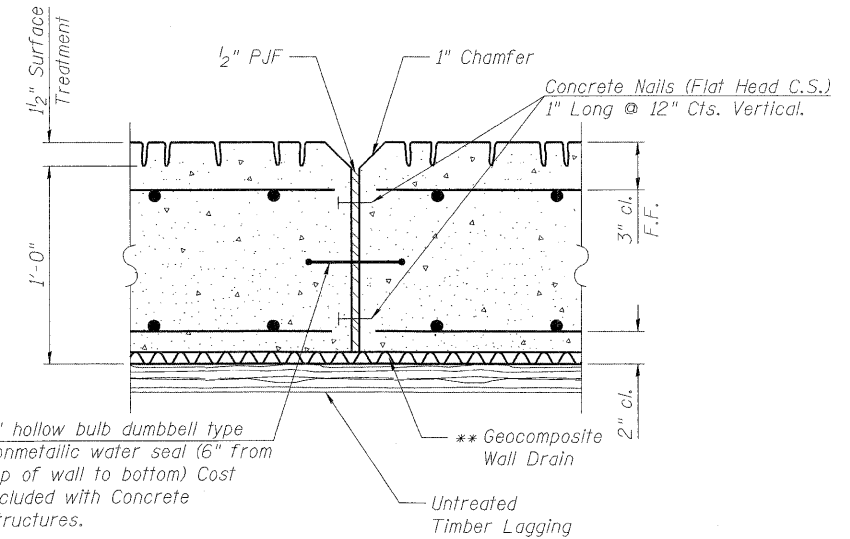
SECTION THRU WALL



SECTION B-B

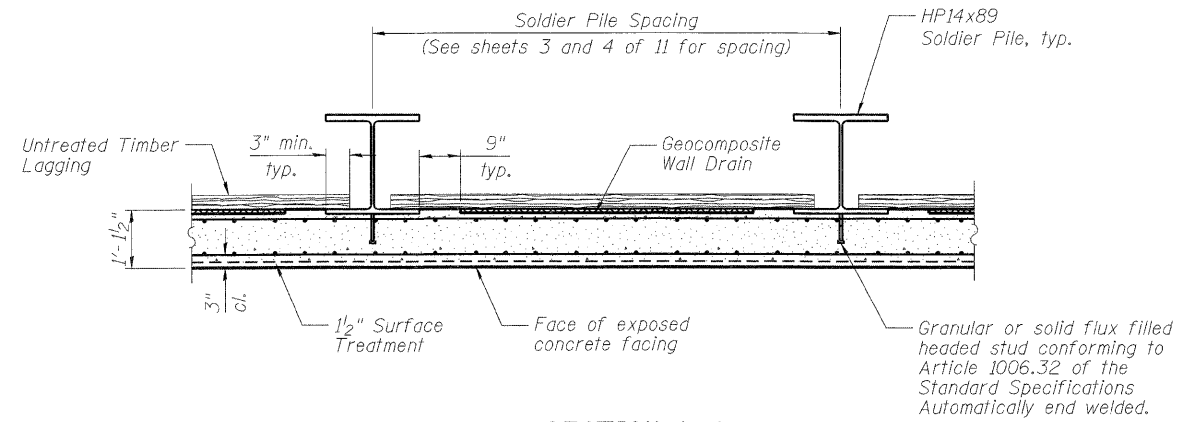


CONSTRUCTION JOINT DETAIL



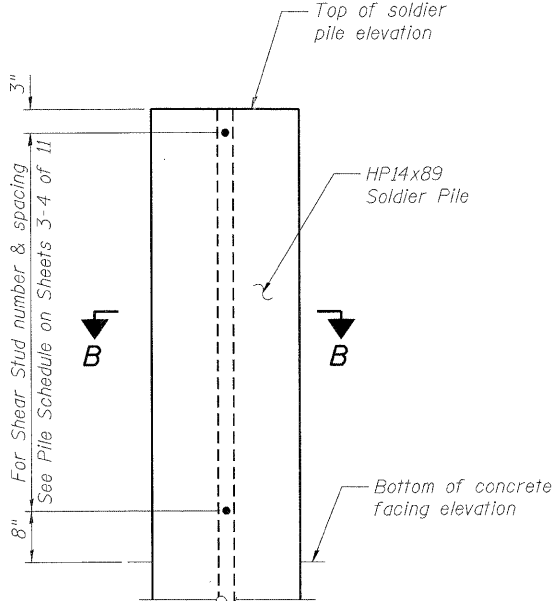
EXPANSION JOINT DETAIL

** Geocomposite Wall Drain shall not have a thickness greater than 1/2".



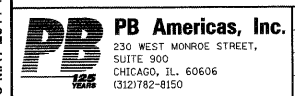
SECTION A-A
(Section rotated 90° for clarity)

Notes:
For Parapet Railing details, see sheet 7 of 11.
For Bill of Material, see sheet 6 of 11.



SHEAR STUD DETAIL

T:\16829-PrairiePkwy-Ph2\Struct\Cadd\Prefinal\US34 Retaining Wall 2\0478801-66985-005-DET.dgn
05-MAY-2011 10:34



FILE NAME = 0478801-66985-005-DET.dgn
PLOT SCALE = NONE
PLOT DATE = 5/5/2011

DESIGNED - S. CHELBIAN
CHECKED - M. Shalkh
DRAWN - D. C. PATEL
CHECKED - J. GRAINAWI

REVISED -
REVISED -
REVISED -
REVISED -

**STATE OF ILLINOIS
DEPARTMENT OF TRANSPORTATION**

**SECTIONS AND DETAILS
STRUCTURE NO. 047-8801**

SHEET NO. 5 OF 11 SHEETS

F.A.P. RTE.	SECTION	COUNTY	TOTAL SHEETS	SHEET NO.
591	13R-2;14R-1 & BR-1(1);15R-1	KENDALL	429	311
CONTRACT NO. 66985				
ILLINOIS FED. AID PROJECT				