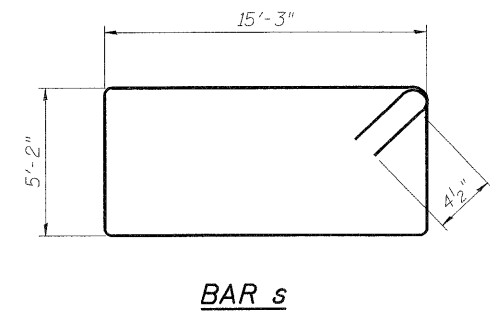
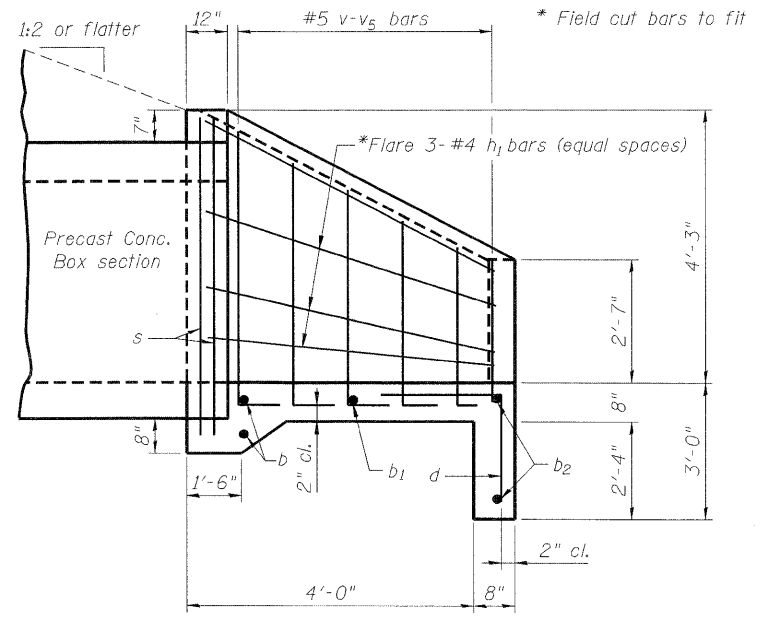


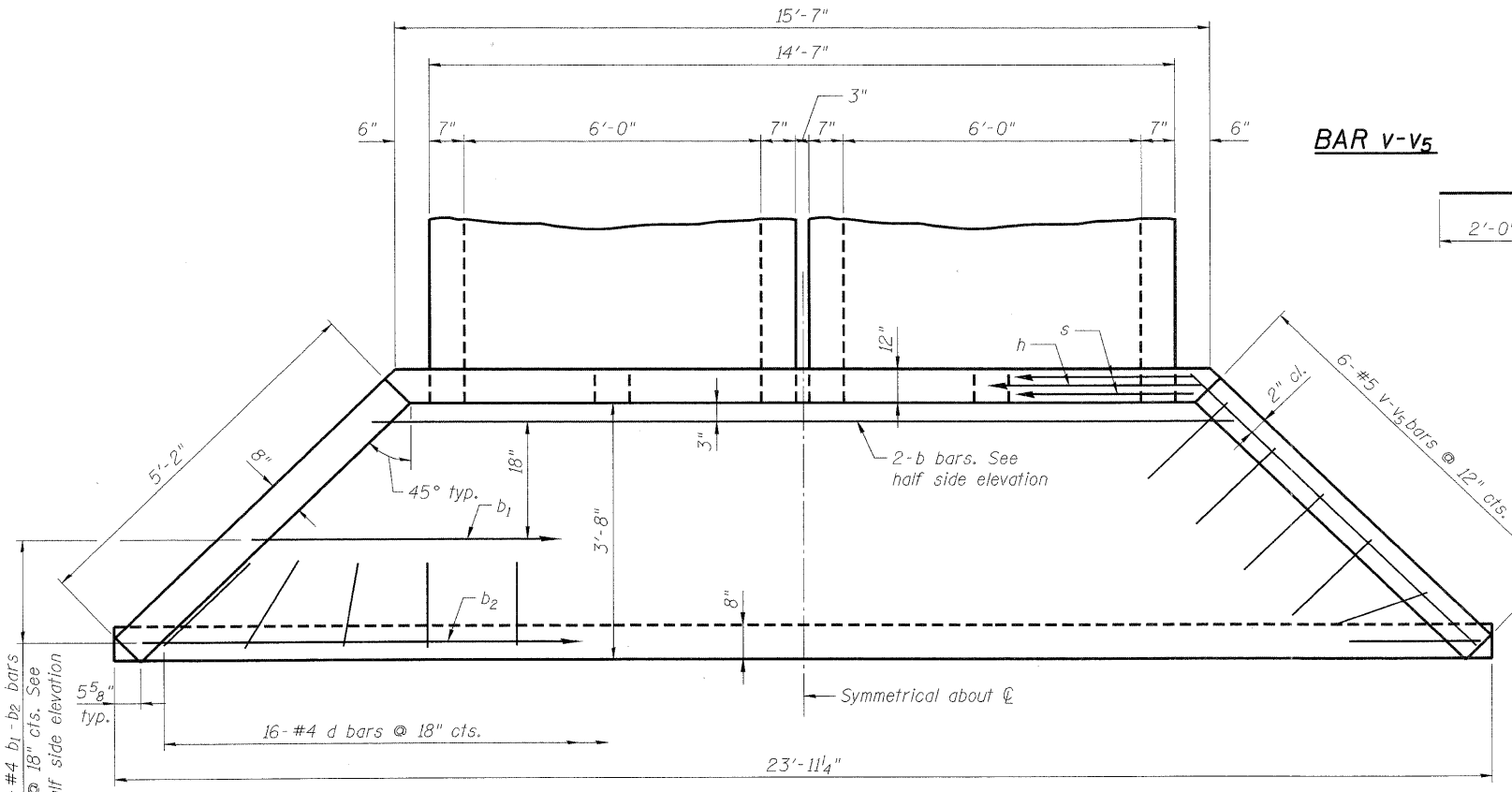
END ELEVATION



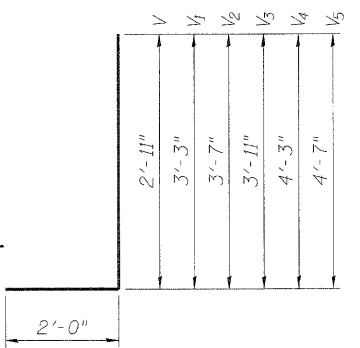
BAR s



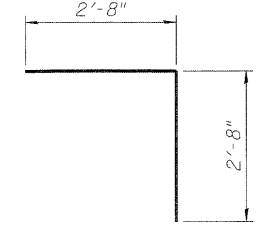
HALF SIDE ELEVATION



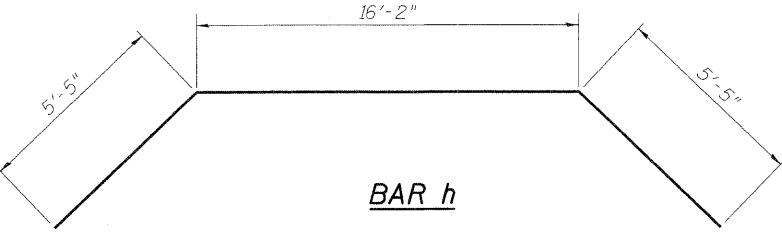
PLAN



BAR v-v5



BAR d



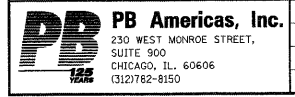
BAR h

BILL OF MATERIAL **

Bar	No.	Size	Length	Shape
b	4	#5	17'-9"	—
b1	2	#4	20'-9"	—
b2	4	#4	23'-7"	—
d	32	#4	5'-4"	└
h	2	#5	27'-0"	┌
h1	12	#4	5'-10"	—
s	4	#4	41'-7"	▭
v	4	#5	4'-11"	└
v1	4	#5	5'-3"	└
v2	4	#5	5'-7"	└
v3	4	#5	5'-11"	└
v4	4	#5	6'-3"	└
v5	4	#5	6'-7"	└
Class SI Concrete			Cu. Yd.	14.0
Reinforcement bars			Pound	640

** For two end sections. The quantities shown are for information only.

T:\16829-PrairiePony-Ph2\Struct\Cadd\Pre\final\US34 Double Box Culvert\0472541-D366985-003-EDT.dgn 06-MAY-2011 10:17



FILE NAME = 0472541-D366985-003-EDT.dgn	DESIGNED - H. Alkhatib	REVISED -
PLOT SCALE = NONE	CHECKED - R. Ofrembiak	REVISED -
PLOT DATE = 5/6/2011	DRAWN - H. Alkhatib	REVISED -
	CHECKED - J. Gralnaw	REVISED -

**STATE OF ILLINOIS
DEPARTMENT OF TRANSPORTATION**

**CAST-IN-PLACE END SECTION DETAILS
STRUCTURE NO. 047-2541**

SHEET NO. 3 OF 5 SHEETS

F.A. RTE.	SECTION	COUNTY	TOTAL SHEETS	SHEET NO.
591	13R-2;14R-1 & BR-1(1);15R-1	KENDALL	429	326
CONTRACT NO. 66985			ILLINOIS FED. AID PROJECT	