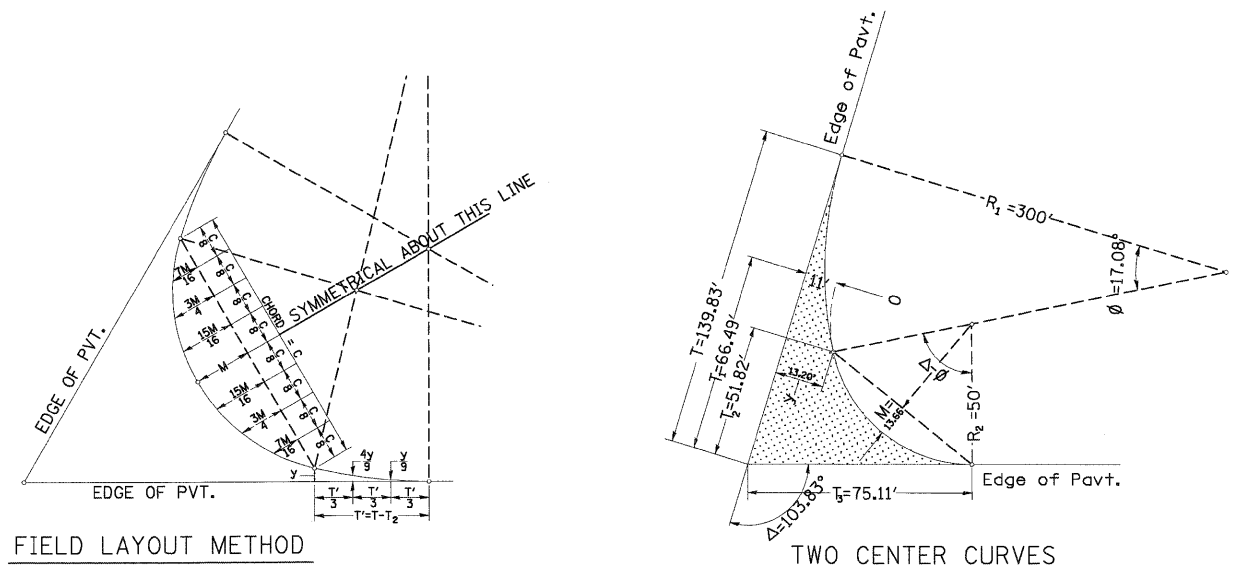


NOTE:
 WHEN MILLING OPERATIONS PRODUCE A ROUNDED EDGE,
 THEN A SAW CUT SHALL BE USED TO MANUFACTURE
 A PERPENDICULAR EDGE AS SHOWN IN THE DETAIL.
 THE ENGINEER SHALL BE THE SOLE JUDGE
 CONCERNING THE USE OF THIS DETAIL

HMA DETAIL AT BUTT JOINTS

406-8

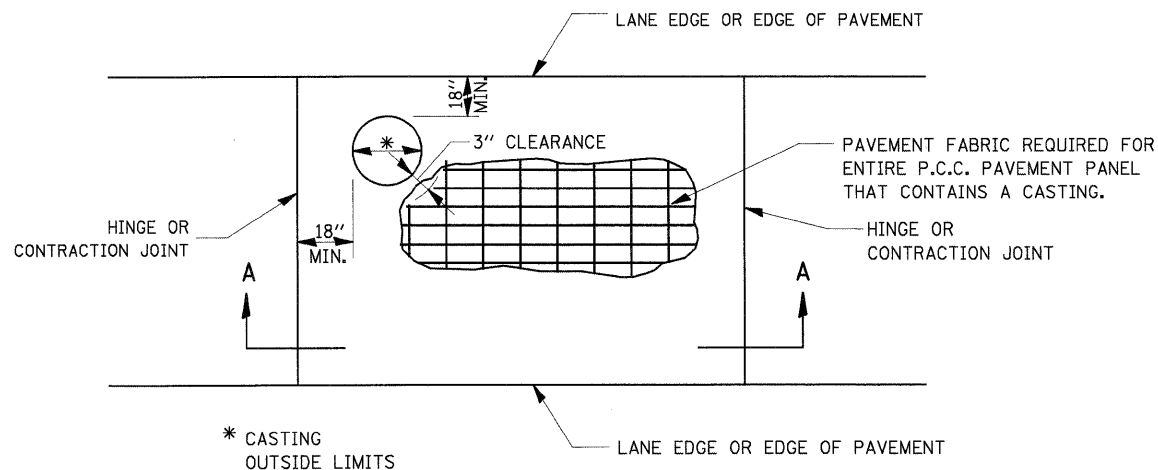


CURVE #	1	2
R ₁	300'	300'
R ₂	50'	50'
O	11'	11'
Δ	103.83'	103.83'
T	139.83'	139.83'
T ₁	66.49'	66.49'
T ₂	51.82'	51.82'
T ₃	75.11'	75.11'
y	13.20'	13.20'
$\frac{4y}{9}$	5.87'	5.87'
$\frac{y}{9}$	1.47'	1.47'
M	13.66'	13.66'
$\frac{15M}{16}$	12.81'	12.81'
$\frac{3M}{4}$	10.25'	10.25'
$\frac{7M}{16}$	5.98'	5.98'
C	68.66'	68.66'

TWO CENTER CURVE DATA

US34 AND NEEDHAM ROAD
 INTERSECTION

420-5



GENERAL NOTES

THE CASTING SHALL BE SET TO GRADE, ANCHORED,
 AND INCORPORATED INTO THE P.C.C. PAVEMENT
 CONSTRUCTION. SEPARATE PAVEMENT BLOCKOUTS
 WILL NOT BE ALLOWED.

SEE STD. 420701 FOR ADDITIONAL PAVEMENT
 FABRIC DETAILS.

PAVEMENT FABRIC WILL BE PAID FOR SEPARATELY.
 THE QUANTITY OF PAVEMENT FABRIC WILL BE
 THE COMPUTED SURFACE AREA OF THE P.C.C.
 PAVEMENT PANEL IN WHICH THE PAVEMENT FABRIC
 IS INSTALLED. NO DEDUCTION WILL BE MADE FOR
 THE CASTING AREA.

CASTINGS IN P.C.C. PAVEMENT

420-2