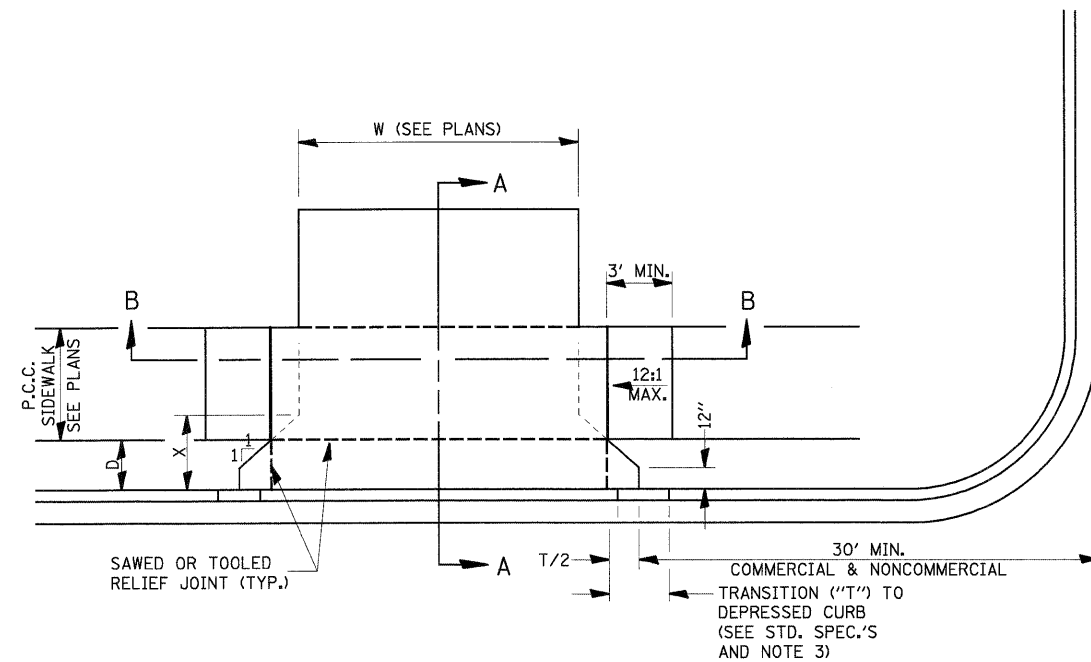


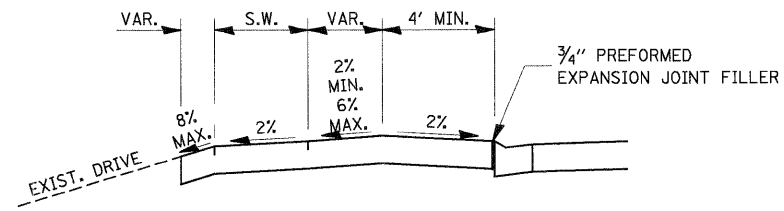
CASE I (D ≥ X)



CASE I (D < X)

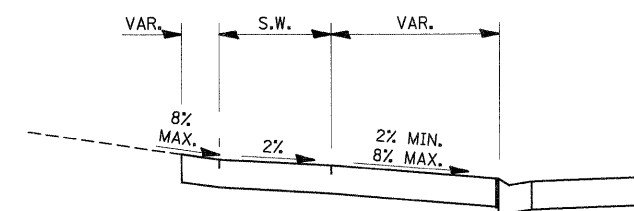
GENERAL NOTES:

1. X = 7' (NON-COMMERCIAL) X = 15' (COMMERCIAL)
2. COST OF EXPANSION JOINTS AND RELIEF JOINTS SHALL BE INCLUDED IN THE COST OF THE P.C.C. DRIVEWAY PAVEMENT.
3. AS THE DIMENSION "D" APPROACHES ZERO, THE TRANSITION TO DEPRESSED CURB SHALL BE NO STEEPER THAN 12:1
4. PROPOSED DRIVEWAY PAVEMENT SHALL BE P.C. CONCRETE WITHIN THE PROPOSED R.O.W. THICKNESS IS SHOWN ON THE PLANS.
5. THE MATERIAL TYPE AND THICKNESS OF PROPOSED DRIVEWAY PAVEMENT TO BE CONSTRUCTED OUTSIDE OF THE PROPOSED R.O.W. AND WITHIN TEMPORARY EASEMENTS IS SHOWN ON THE PLANS.

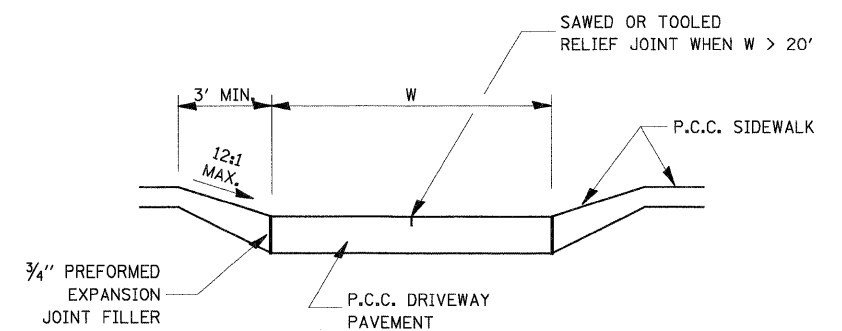


DEPRESSED ENTRANCE*
SECTION A-A

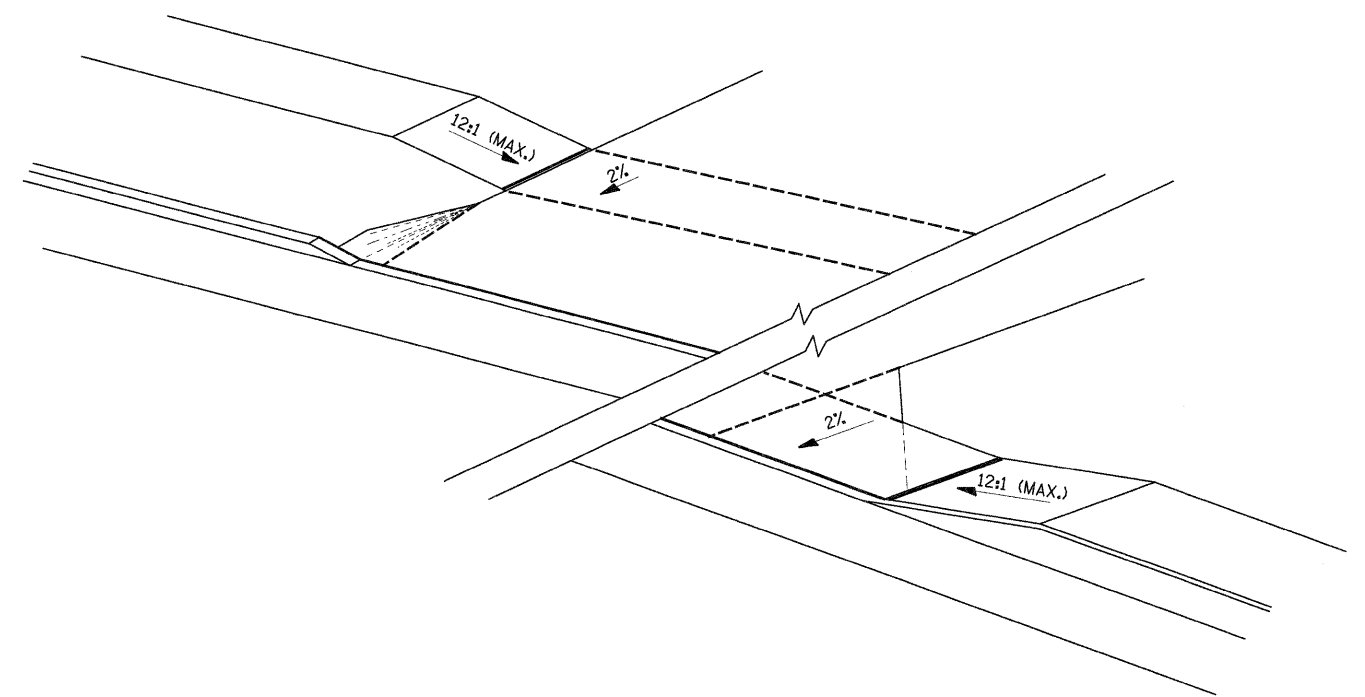
*(SEE X-SECTIONS FOR ENTRANCE PROFILE.)



ELEVATED ENTRANCE*
SECTION A-A



SECTION B-B



PCC URBAN ENTRANCES

423-1