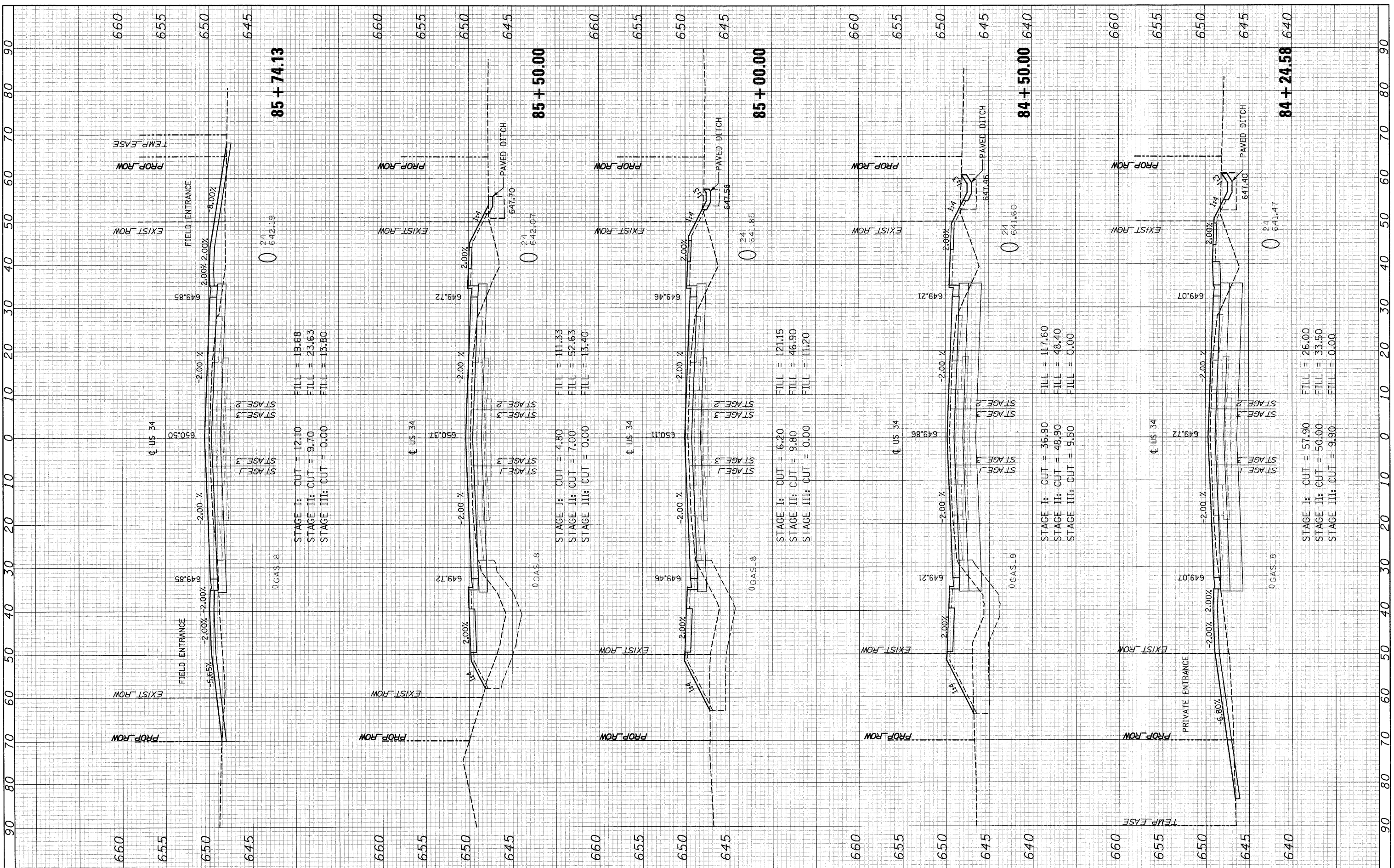


FINAL SURVEY	BY	DATE
PLOTTED		
NOTE BOOK		
AREAS CHECKED		
NO.		

ORIGINAL SURVEY	BY	DATE
PLOTTED		
NOTE BOOK		
AREAS CHECKED		
NO.		



STAGE I: CUT = 12.10
 STAGE II: CUT = 9.70
 STAGE III: CUT = 0.00
 FILL = 19.68
 FILL = 23.63
 FILL = 13.80

STAGE I: CUT = 4.80
 STAGE II: CUT = 7.00
 STAGE III: CUT = 0.00
 FILL = 11.33
 FILL = 52.63
 FILL = 13.40

STAGE I: CUT = 6.20
 STAGE II: CUT = 9.80
 STAGE III: CUT = 0.00
 FILL = 121.15
 FILL = 46.90
 FILL = 11.20

STAGE I: CUT = 36.90
 STAGE II: CUT = 48.90
 STAGE III: CUT = 9.50
 FILL = 117.60
 FILL = 48.40
 FILL = 0.00

STAGE I: CUT = 57.90
 STAGE II: CUT = 50.00
 STAGE III: CUT = 9.90
 FILL = 26.00
 FILL = 33.50
 FILL = 0.00

FILE NAME = T:\16829-PrainPkwy-Ph2\Civil\Plane\Xshs\035895-US34\sheet-FINAL-plotting.dgn	USER NAME =	DESIGNED - MMS	REVISED -	STATE OF ILLINOIS DEPARTMENT OF TRANSPORTATION	US ROUTE 34 CROSS SECTIONS			F.A.P. RTE. 591	SECTION 13R-2;14R-1 & BR-1(1);15R-1	COUNTY KENDALL	TOTAL SHEETS 429	SHEET NO. 406	
PLLOT SCALE =	CHECKED - KJB	DATE - 08-18-2011	REVISED -		SCALE: 1" = 20'	SHEET NO. 63 OF 86 SHEETS	STA. 84+24.58 TO STA. 85+74.13	CONTRACT NO. 66985		ILLINOIS FED. AID PROJECT			
PLLOT DATE = 19-AUG-2011 08:53	DATE - 08-18-2011	REVISED -	REVISED -										