

F.A.P. RTE.	SECTION	COUNTY	TOTAL SHEETS	SHEET NO.
587	22 BR)BR	BUREAU	61	1
FED. ROAD DIST. NO.	ILLINOIS	CONTRACT NO.	66995	

**INDEX OF SHEETS**

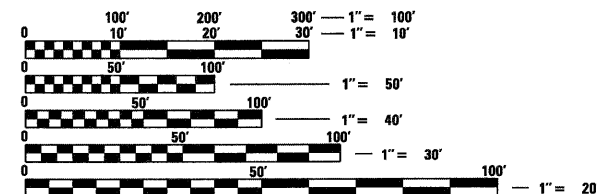
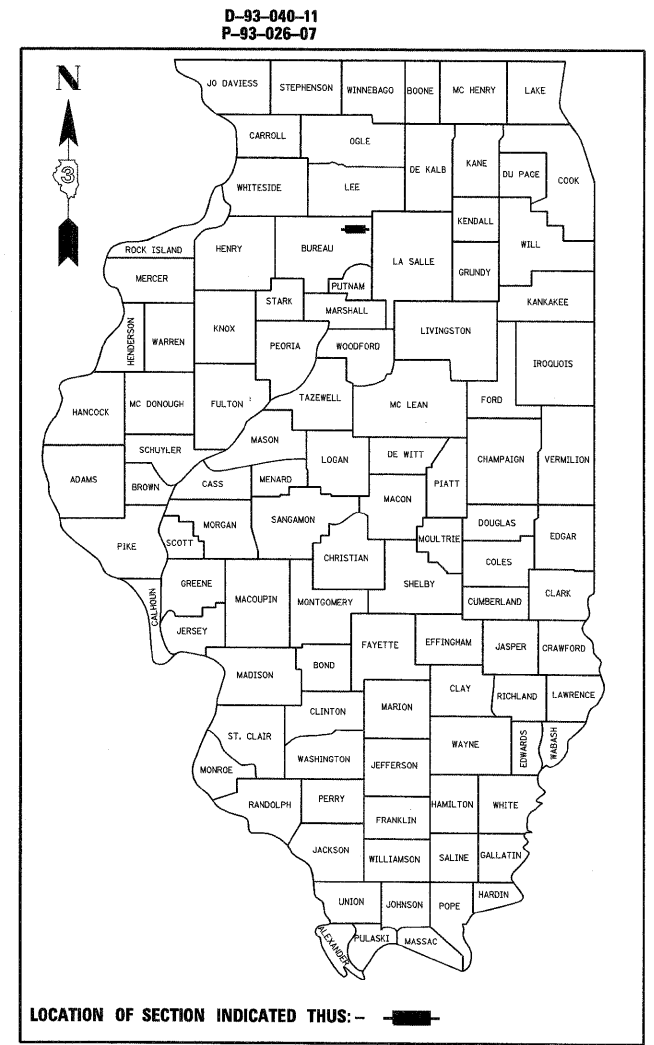
- 1 COVER SHEET
  - 2 GENERAL NOTES AND LIST OF STANDARDS
  - 3 SUMMARY OF QUANTITIES
  - 4-5 TYPICAL SECTIONS
  - 6-7 SCHEDULE OF QUANTITIES
  - 8 ALIGNMENT, TIES AND BENCHMARKS
  - 9 PLAN AND PROFILE
  - 10-13 TRAFFIC CONTROL
  - 14 EROSION CONTROL PLAN
  - 15 DRAINAGE PLAN AND PROFILE
  - 16 RIGHT OF WAY PLAN
  - 17-42 STRUCTURAL PLANS
  - 43-53 EXISTING PLAN - STRUCTURE
  - 54-55 DETAILS
  - 56-61 CROSS SECTIONS
- FOR LIST OF HIGHWAY STANDARDS SEE SHEET NO. 2

**STATE OF ILLINOIS**  
**DEPARTMENT OF TRANSPORTATION**  
**DIVISION OF HIGHWAYS**  
**PROPOSED**  
**HIGHWAY PLANS**

**FAP ROUTE 587 (US 34)**  
**SECTION (22 BR)BR**  
**PROJECT: F-0587(025)**  
**BUREAU COUNTY**

**C - 93 - 047 - 11**

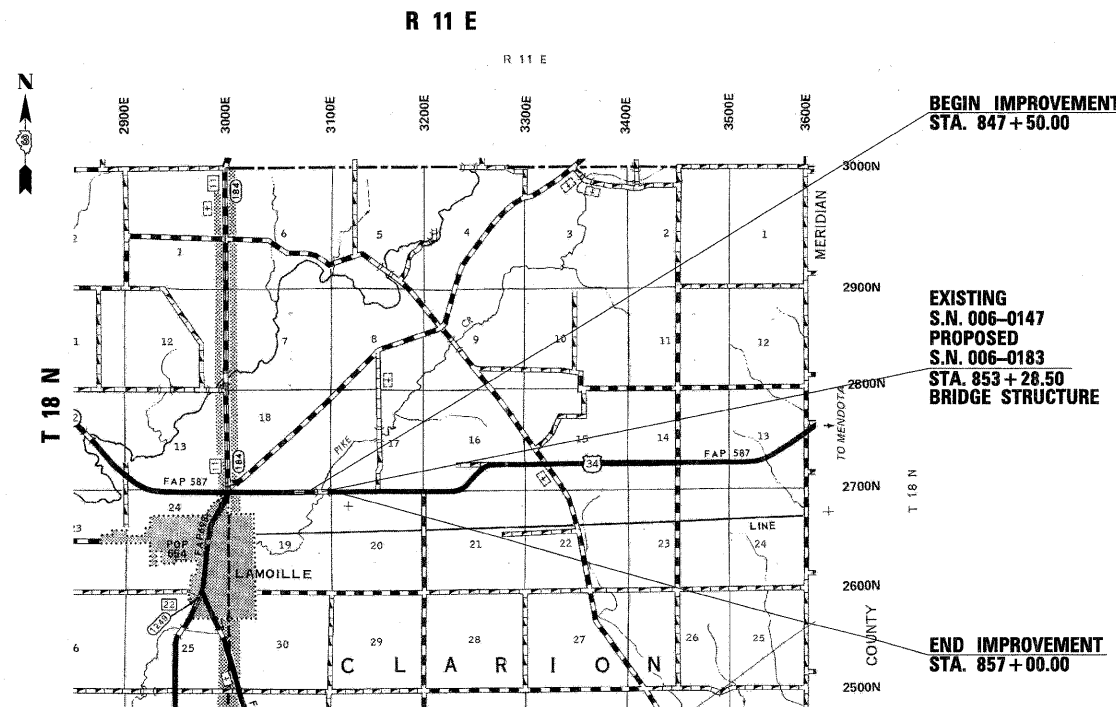
**REMOVE AND REPLACE EXISTING BRIDGE STRUCTURE (SN 006-0147) CARRYING US 34**  
**OVER PIKE CREEK**  
**APPROXIMATELY ONE MILE NORTHEAST OF LAMOILLE**



FULL SIZE PLANS HAVE BEEN PREPARED USING STANDARD ENGINEERING SCALES. REDUCED SIZED PLANS WILL NOT CONFORM TO STANDARD SCALES. IN MAKING MEASUREMENTS ON REDUCED PLANS, THE ABOVE SCALES MAY BE USED.

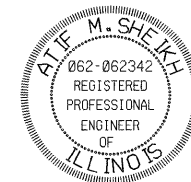
J.U.L.I.E.  
 JOINT UTILITY LOCATION INFORMATION FOR EXCAVATION  
 1-800-892-0123  
 OR 811

**DISTRICT 3 NO. (815) 434-6131**  
**PROJECT ENGINEER: JOSEPH KANNEL, P.E.**  
**UNIT CHIEF: PAT BRABOY, P.E.**  
**TOWNSHIP: CLARION**  
**CONTRACT NO. 66995**

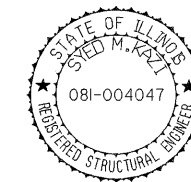


**LOCATION MAP**

1 INCH = 1 MILE  
 GROSS LENGTH = 950 FT. = 0.180 MI.  
 NET LENGTH = 950 FT. = 0.180 MI.



Atif M. Sheikh  
 Licensed Professional Engineer  
 State of Illinois  
 Lic. No. 062-062342  
 Expires: 11-30-2013  
 Signature and Seal apply  
 to Civil Drawings



Syed M. Kazi  
 Licensed Structural Engineer  
 State of Illinois  
 Lic. No. 081-004047  
 Expires: 11-30-2012  
 Signature and Seal apply  
 to Structural Drawings

**DELTA ENGINEERING GROUP, LLC**  
 CONSULTING ENGINEERS, CONSTRUCTION MANAGERS, SURVEYORS  
 111 W JACKSON BLVD, SUITE 910  
 CHICAGO, IL 60604

**FUNCTION CLASSIFICATION**

**RURAL MINOR ARTERIAL**  
 2009 ADT = 2400  
 P.V. = 92%      S.U. = 4.0%      M.U. = 4.0%

STATE OF ILLINOIS  
 DEPARTMENT OF TRANSPORTATION  
 DIVISION OF HIGHWAYS

SUBMITTED November 1 20 11

Ed S. Throckmorton  
 DEPUTY DIRECTOR OF HIGHWAYS, REGION ENGINEER

December 9 20 11  
Scott E. Stitt P.E.  
 acting ENGINEER OF DESIGN AND ENVIRONMENT

December 9 20 11  
William R. Frey Jr.  
 Interim DIRECTOR OF HIGHWAYS, CHIEF ENGINEER

**PRINTED BY THE AUTHORITY  
 OF THE STATE OF ILLINOIS**