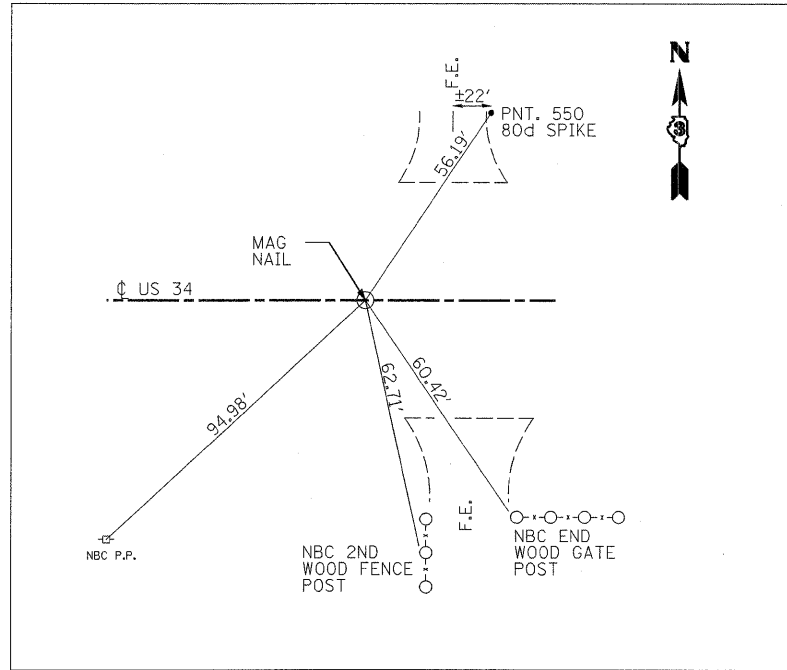
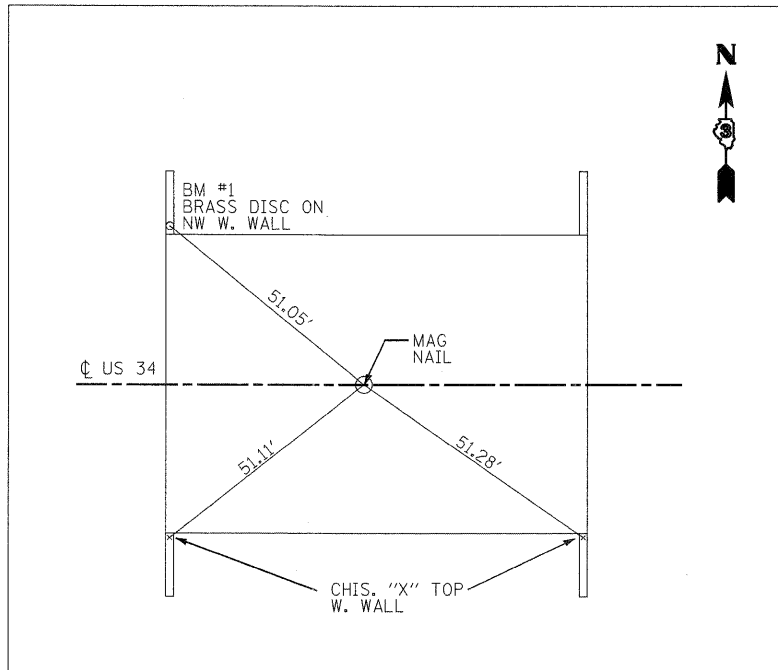


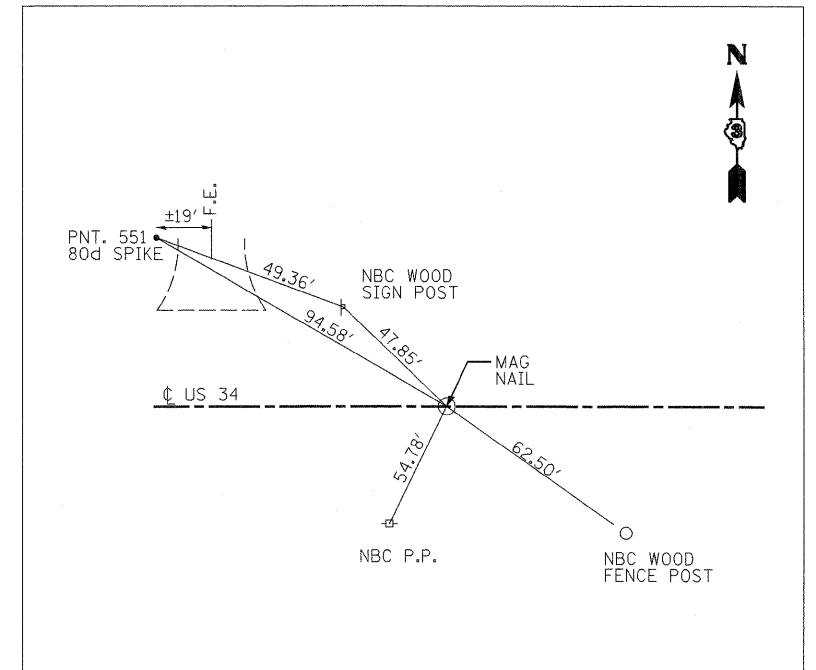
PLAN	SURVEYED	DATE
	PLOTTED	
	ALIGNED	
	CHECKED	
	FILED	
NOTE BOOK NO.	CADD FILE NAME	



P.O.T. STA. 845+72.01  
 C.P. 550 STA. 846+13.70, 37.30' LT  
 (N.T.S)

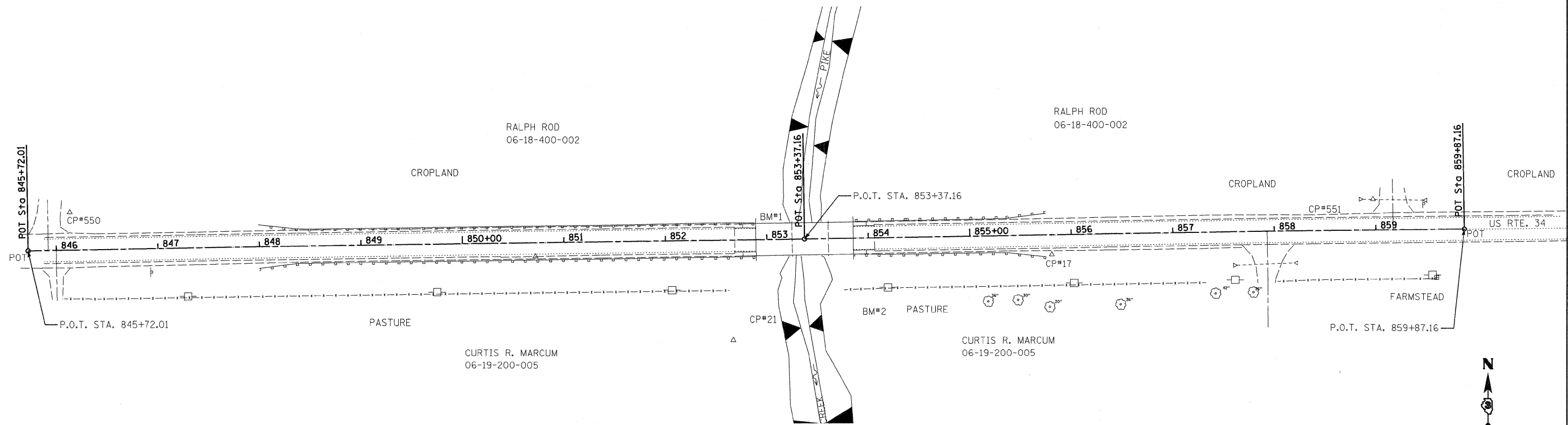


STRUCTURE P.O.T. STA. 853+37.16  
 SN 006-0147  
 (N.T.S)  
 REPLACE WITH PERMANENT SURVEY MARKER



P.O.T. STA. 859+87.16  
 C.P. 551 STA. 858+97.68, 30.48' LT  
 (N.T.S)

PROFILE	SURVEYED	DATE
	PLOTTED	
	GRADES CHECKED	
	STRUCTURE NOTATIONS CHECKED	
NOTE BOOK NO.		



BM #1, ELEV 780.11  
 STA. 852+89, 17.00' LT  
 BRASS DISC, TOP OF NW WINGWALL

BM #2, ELEV 776.07  
 STA. 854+19, 49.00' RT  
 RAILROAD SPIKE IN POWER POLE



USER NAME =	kkhen
DESIGNED DB	
DRAWN DB	
CHECKED AS	
DATE	OCTOBER 14, 2011
REVISIONS	
REVISED -	
REVISED -	
REVISED -	
REVISED -	

STATE OF ILLINOIS  
 DEPARTMENT OF TRANSPORTATION

ALIGNMENT, TIES AND BENCHMARKS

SCALE: 1" = 50' SHEET NO. 8 OF 61 SHEETS STA. TO STA.

F.A.P. RTE.	SECTION	COUNTY	TOTAL SHEETS	SHEET NO.
587	(22 BR)BR	BUREAU	61	8
CONTRACT NO. 66995				
FED. ROAD DIST. NO. ILLINOIS FED. AID PROJECT				