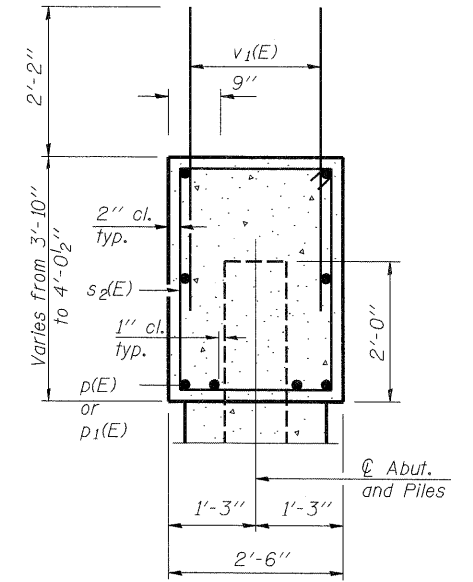
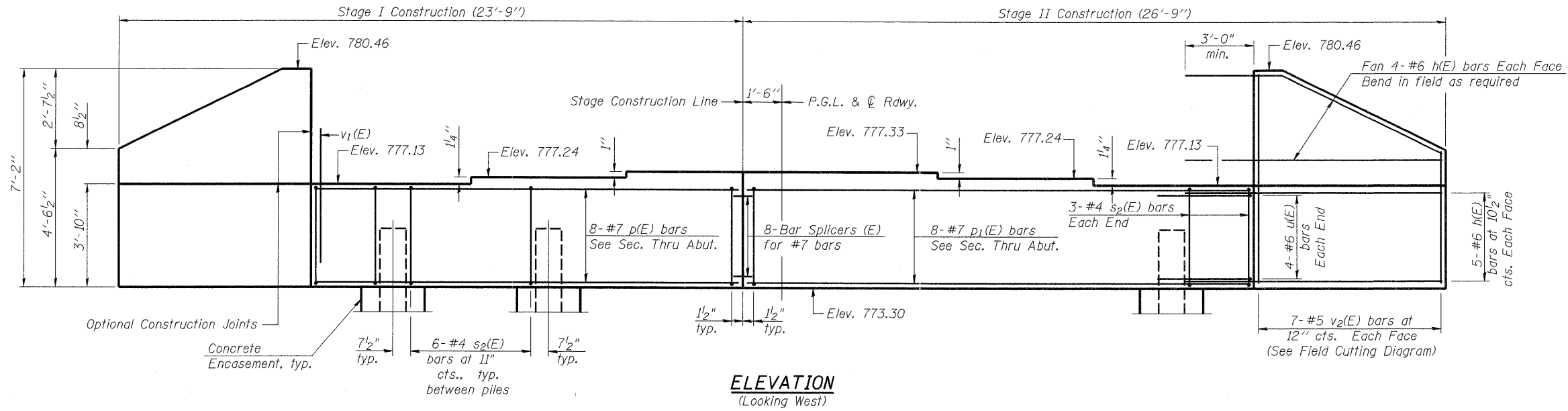
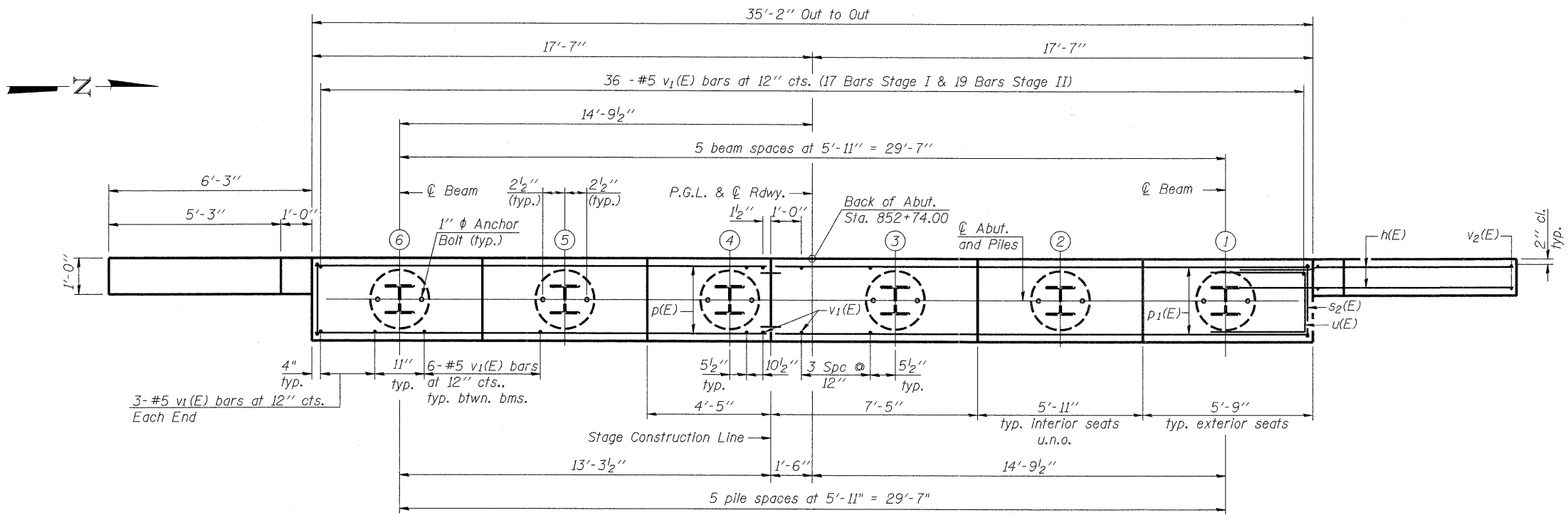


Notes:  
Pour steps monolithically with cap.



SECTION THRU ABUT.



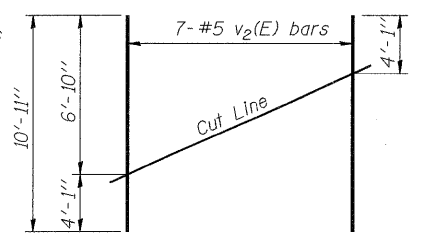
BILL OF MATERIAL

Bar	No.	Size	Length	Shape
h(E)	36	#6	9'-11"	—
p(E)	8	#7	15'-9"	—
p1(E)	8	#7	18'-9"	—
s2(E)	36	#4	12'-1"	□
u(E)	8	#6	8'-0"	□
v1(E)	72	#5	4'-4"	—
v2(E)	14	#5	10'-11"	—
Structure Excavation		Cu. Yd.	55.5	
Concrete Structures		Cu. Yd.	15.9	
Reinforcement Bars, Epoxy Coated		Pound	2,020	
Furnishing Steel Piles HP 10x42		Foot	155	
Driving Piles		Foot	155	
Test Pile Steel HP 10x42		Each	1	
Concrete Encasement		Cu. Yd.	2.1	
Bar Splicers		Each	8	

For details of Bar Splicers, see sheet 23 of 26.  
For details of piles and Concrete Encasement, see sheet 22 of 26.

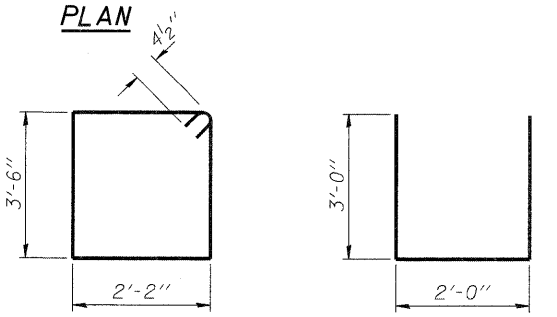
PILE DATA

Type: HP 10 x 42  
Nominal Required Bearing: 228 Kips  
Factored Resistance Available: 125 Kips  
Est. Length: 31 feet  
No. Production Piles: 5  
No. Test Piles: 1



FIELD CUTTING DIAGRAM

Order v2(E) bars full length. Cut as shown and use remainder of bars in opposite face.



BAR s2(E)

BAR u(E)