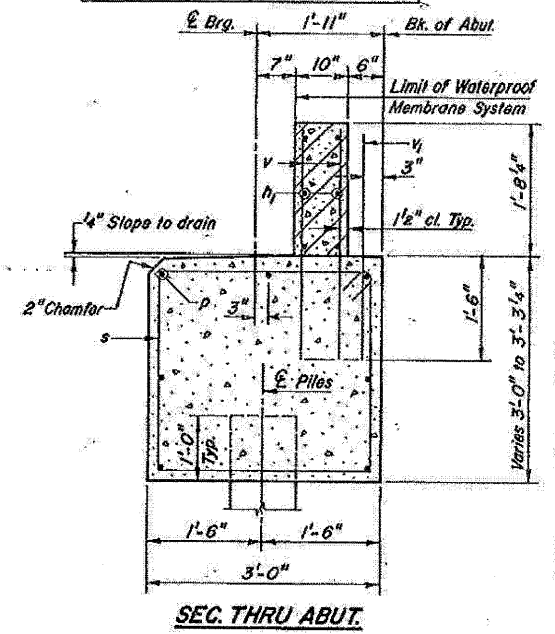
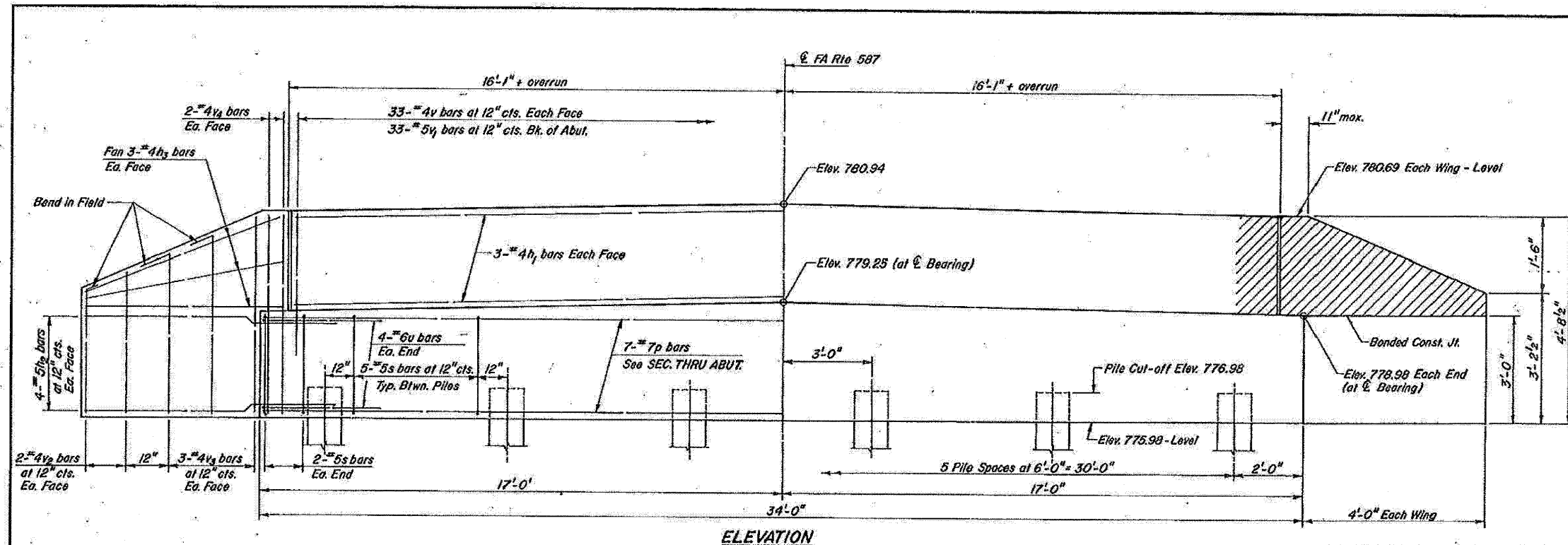


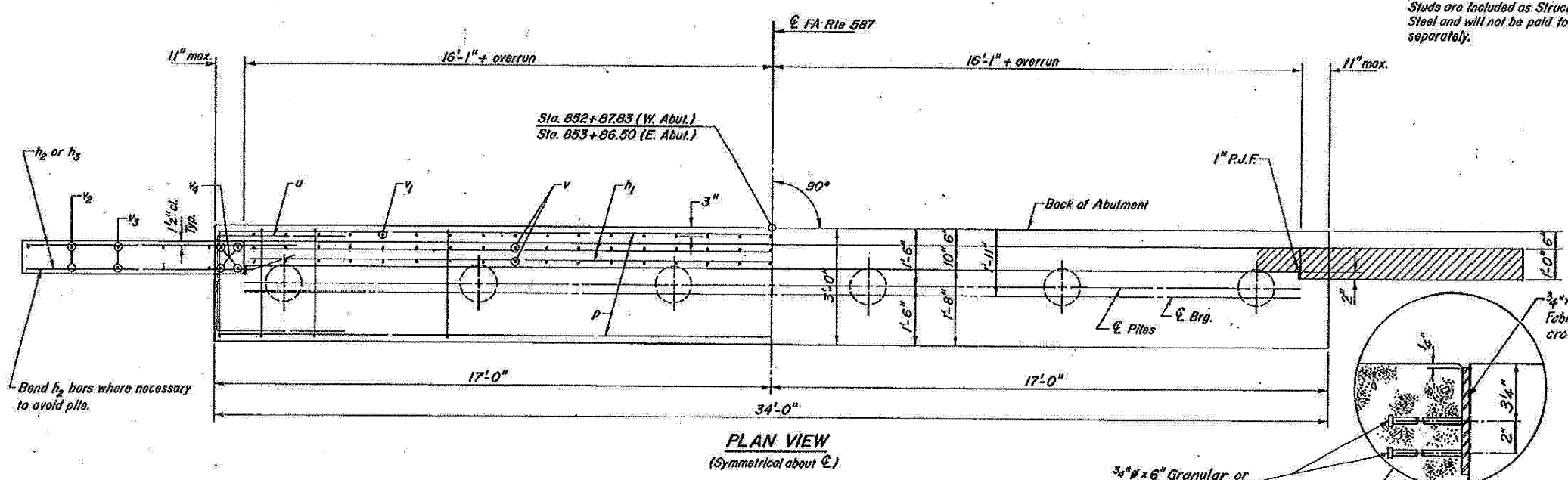
ROUTE	SECTION	COUNTY	TOTAL SHEETS	SHEET NO.
FA 587	22BR	BUREAU	24	14
SHEET NO. 6 OF 8 SHEETS				
STA.	TO STA.			
ILHWY.DIST.NO.6	ILLINOIS FED. AID PROJECT-			



NOTES: Hatched areas to be poured after beams are anchored in place.
Studs are included as Structural Steel and will not be paid for separately.

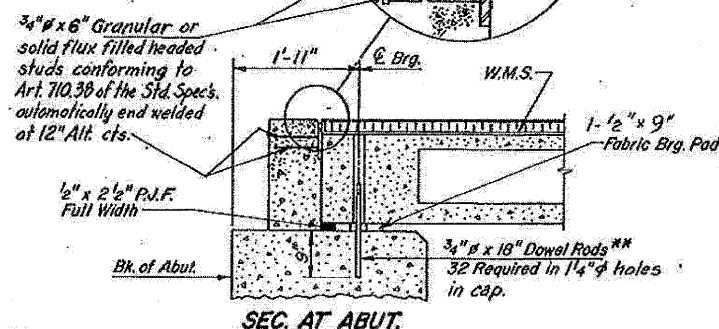
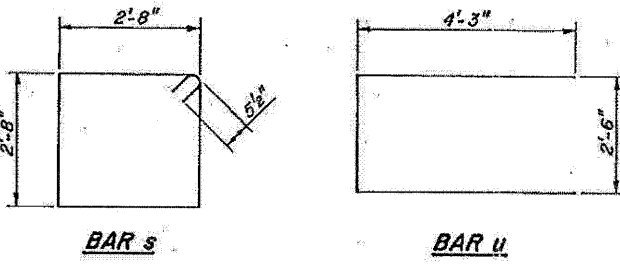
TWO ABUTMENTS
BILL OF MATERIALS

Bar	No.	Size	Length	Shape
h_1	12	"4	34'-0"	—
h_2	32	"5	6'-3"	—
h_3	24	"4	4'-9"	—
p	14	"7	33'-9"	—
s	58	"5	11'-7"	□
u	16	"6	11'-0"	□
v	132	"4	3'-0"	—
v_1	66	"5	3'-0"	—
v_2	16	"4	3'-3"	—
v_3	24	"4	4'-6"	—
v_4	16	"4	4'-3"	—
Structural Steel		Pound		900
Class X Concrete		Cu. Yd.		236
Reinforcement Bars		Pound		3110
Concrete Piles		Lin. Ft.		323
Test Pile, Concrete		Each		1



PILE DATA

Type: Concrete
Capacity: 35T (W. Abut.), 21T (E. Abut.)
Est. Length: 33' (W. Abut.), 25' (E. Abut.)
No. Required: 12 (Includes 1 Test Pile)
Contractor shall drive one Concrete Pile in a permanent location at the East Abutment before ordering remainder of piles.



**Dowel Rods to be grouted after beams are in place. Allow rods to cure (min. 24 hrs.) prior to grouting shear keys. Cost of rods to be incidental to the Unit Price Bid for P.P.C. Dk. Bms. (17" Depth).

EXISTING PLANS FOR INFORMATION ONLY
S.N. 006-0147

ABUTMENTS
F.A. ROUTE 587 OVER PIKE CREEK
SECTION 22BR BUREAU COUNTY
STA. 853+37.16

GREENE & BRADFORD, Ltd.
CONSULTING ENGINEERS
1111 STEVENSON DR. • PEASAROCK, ILL. 60130

DATE	BY	REVISION

DATE	BY	REVISION



USER NAME = kghan	DESIGNED DB	REVISED -
PLOT SCALE = #SCALE#	DRAWN DB	REVISED -
PLOT DATE = 10/11/2011	CHECKED AS	REVISED -
	DATE OCTOBER 14, 2011	REVISED -

STATE OF ILLINOIS
DEPARTMENT OF TRANSPORTATION

EXISTING PLAN - STRUCTURE

F.A.P. RTE.	SECTION	COUNTY	TOTAL SHEETS	SHEET NO.
587	(22 BR)BR	BUREAU	61	48
CONTRACT NO. 66995				
FED. ROAD DIST. NO. (ILLINOIS) FED. AID PROJECT				