

INDEX OF SHEETS

- 1. COVER SHEET
- 2. GENERAL NOTES
- 3. SUMMARY OF QUANTITIES
- 4. TYPICAL SECTION (STRUCTURE)
- 5 - 13. STRUCTURE PLANS

STANDARDS

701901-02 TRAFFIC CONTROL DEVICES

STATE OF ILLINOIS 1-20-2012 LETTING ITEM 040

F.A.P. RTE.	SECTION	COUNTY	TOTAL SHEETS	SHEET NO.
68	(1ZR)I-3	LASALLE	13	1
		ILLINOIS	CONTRACT NO. 66B33	

DEPARTMENT OF TRANSPORTATION
DIVISION OF HIGHWAYS

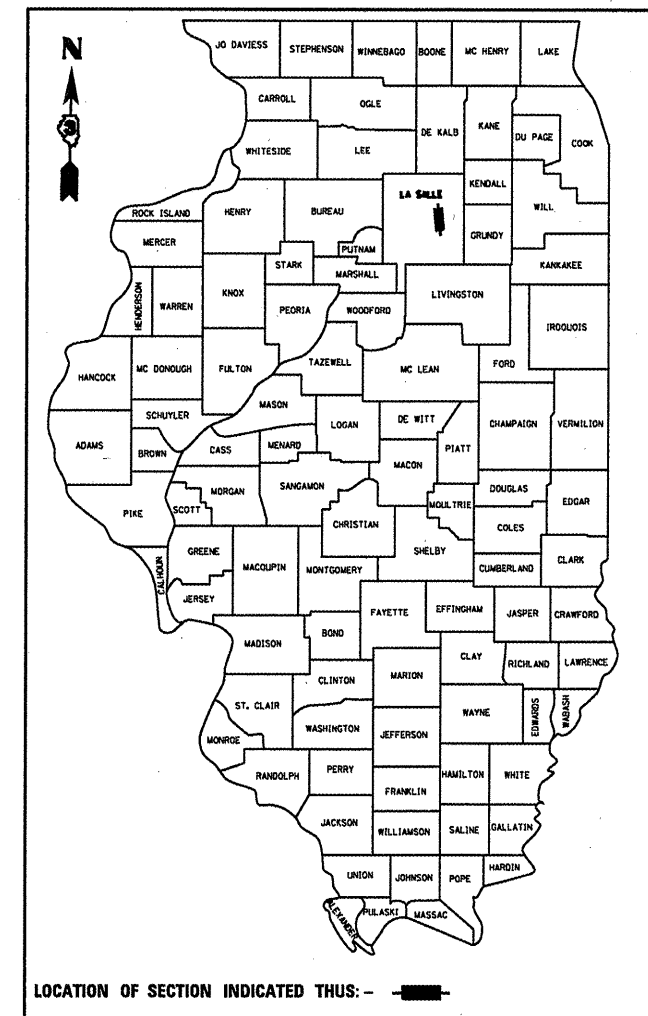
**PROPOSED
HIGHWAY PLANS**

FAP ROUTE 68 (IL 23)
SECTION (1ZR)I-3

PREVENTATIVE BRIDGE MAINTENANCE
LASALLE COUNTY

C-93-103-11

D-93-079-11



FUNCTIONAL CLASSIFICATION

OTHER PRINCIPAL ARTERIAL

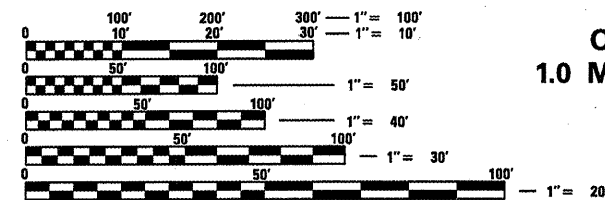
FAP RTE. 68 (IL 23)

2009 ADT 28800

P.V. 95.83%

S.U. 2.43%

M.U. 1.74%



FULL SIZE PLANS HAVE BEEN PREPARED USING STANDARD ENGINEERING SCALES. REDUCED SIZED PLANS WILL NOT CONFORM TO STANDARD SCALES. IN MAKING MEASUREMENTS ON REDUCED PLANS, THE ABOVE SCALES MAY BE USED.

J.U.L.I.E.
JOINT UTILITY LOCATION INFORMATION FOR EXCAVATION
1-800-892-0123
OR 811

DISTRICT 3 NO: (815) 434-6131

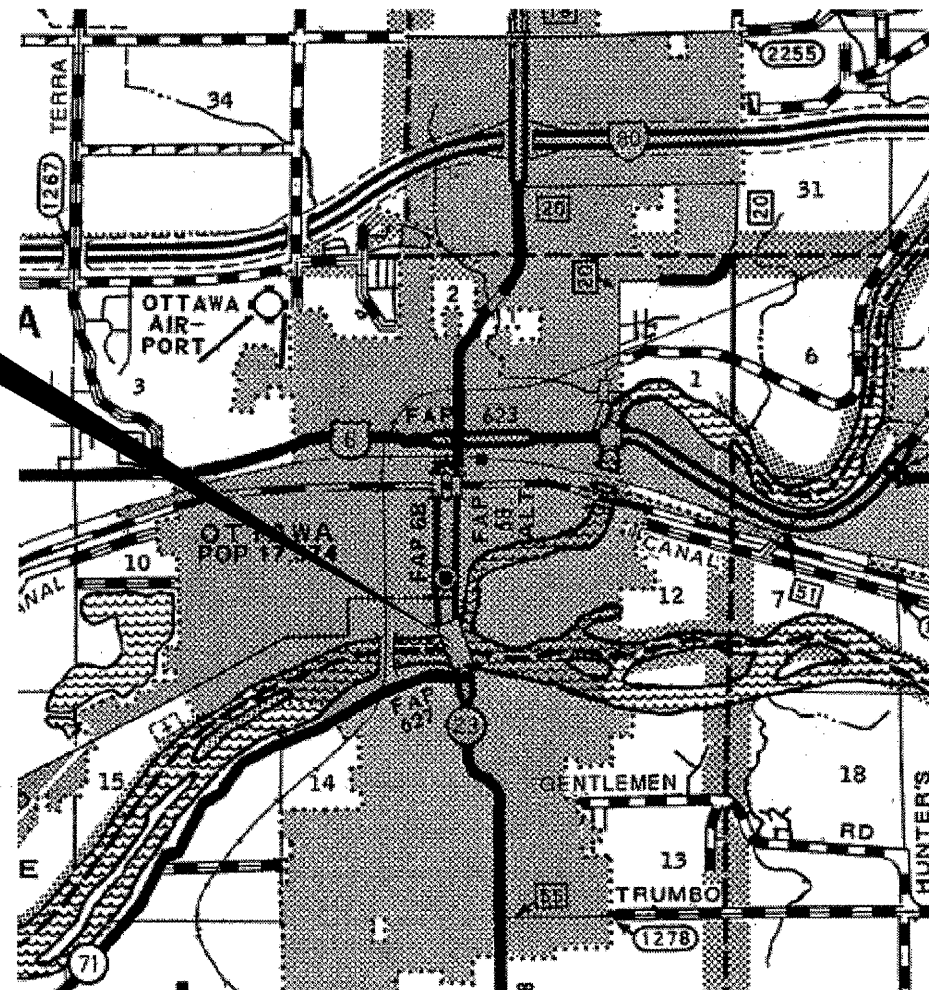
PROJECT ENGINEER: JOE KANNEL P.E.

UNIT CHIEF: RON WOODSHANK

TOWNSHIP: OTTAWA, SOUTH OTTAWA

CONTRACT NO. 66B33

BRIDGE LOCATION
SN 050-0180
CARRIES FAP 68 (IL 23)
OVER THE ILLINOIS RIVER
1.0 MILE SOUTH OF US ROUTE 6



LOCATION MAP
POINT LOCATION

STATE OF ILLINOIS
DEPARTMENT OF TRANSPORTATION
DIVISION OF HIGHWAYS

SUBMITTED *Nov 3 20 11*

[Signature]
DEPUTY DIRECTOR OF HIGHWAYS, REGION ENGINEER

December 9 20 11
Scott E. Stitt, P.E.
ENGINEER OF DESIGN AND ENVIRONMENT

December 9 20 11
William R. Frey
DIRECTOR OF HIGHWAYS, CHIEF ENGINEER

PRINTED BY THE AUTHORITY
OF THE STATE OF ILLINOIS

GENERAL NOTES

PLAN DIMENSIONS AND DETAILS RELATIVE TO THE EXISTING PLANS ARE SUBJECT TO ROUTINE VARIATIONS. THE CONTRACTOR SHALL FIELD VERIFY EXISTING DIMENSIONS AND DETAILS AFFECTING NEW CONSTRUCTION AND MAKE NECESSARY APPROVED ADJUSTMENTS PRIOR TO CONSTRUCTION OR ORDERING OF MATERIALS. SUCH VARIATIONS SHALL NOT BE CAUSE FOR ADDITIONAL COMPENSATION FOR A CHANGE IN THE SCOPE OF THE WORK. HOWEVER, THE CONTRACTOR WILL BE PAID FOR THE QUANTITY FURNISHED BASED UPON THE UNIT BID PRICE FOR THE WORK.

THE CONTRACTOR SHALL BE RESPONSIBLE FOR PROTECTING UTILITY PROPERTY FROM CONSTRUCTION OPERATIONS AS OUTLINED IN ARTICLE 107.31 OF THE STANDARD SPECIFICATIONS. THE "JULIE" NUMBER IS 1-800-892-0123. A MINIMUM OF FORTY-EIGHT (48) HOURS ADVANCE NOTICE IS REQUIRED.

FOR STABILIZATION, ALL TYPE III BARRICADES SHALL REQUIRE A MINIMUM OF FOUR SAND BAGS PER BARRICADE.

ANY REFERENCE TO A STANDARD IN THESE PLANS SHALL BE INTERPRETED TO MEAN THE EDITION AS INDICATED BY THE SUBNUMBER SHOWN IN THE LIST OF STANDARDS OR THE COPY INCLUDED IN THESE PLANS.

THE CONTRACTOR SHALL BE REQUIRED TO SECURE WASTE CONTAINERS THAT REMAIN ON THE JOB SITE. THIS WILL ENTAIL THAT ALL WASTE CONTAINERS CAN NOT BE MOVED OR OPENED DURING NON-WORKING HOURS.

WORKING DAYS SHALL BE CHARGED UNTIL THE CONTRACTOR/SUBCONTRACTOR LISCENSED TO DISPOSE OF PAINT RESIDUE HAS REMOVED THE WASTE MATERIAL FROM THE JOB SITE ACCORDING TO ALL FEDERAL, STATE AND LOCAL LAWS AND ORDINANCES.

THE SSPC-OP1 WILL BE REQUIRED FOR THIS PROJECT.

LOCATION 1: SN 050-0180

ALL EXISTING STRUCTURAL STEEL FOR THIS STRUCTURE IS "WEATHERING STEEL". CLEANING AND PAINTING OF THE EXISTING STRUCTURAL STEEL SHALL BE SPECIFIED IN THE SPECIAL PROVISION FOR "CLEANING AND PAINTING EXISTING STEEL STRUCTURES". CONTAINMENT AND DISPOSAL OF CLEANING AND PAINTING RESIDUES SHALL BE SPECIFIED IN THE SPECIAL PROVISION FOR "CONTAINMENT AND DISPOSAL OF NON-LEAD PAINT CLEANING RESIDUES".

CLEANING AND PAINTING:

- ABUTMENTS:
- a). ALL STRUCTURAL STEEL COMPONENTS SHALL BE CLEANED AND PAINTED WITHIN A DISTANCE OF TEN FEET (10') AS MEASURED FROM THE END OF THE BEAMS INCLUDING (ALL BEAMS, DIAPHRAGMS, BEARING ASSEMBLIES, STIFFENERS, CONNECTORS, DIAGONALS, CROSSFRAME BRACING, LATERAL BRACING, FLANGE PLATES AND ALL OTHER RELATED STEEL COMPONENTS SHALL BE CLEANED AND PAINTED.
- PIERS 1 & 2
- a). ALL STRUCTURAL STEEL COMPONENTS SHALL BE CLEANED AND PAINTED WITHIN A DISTANCE OF TEN FEET (10') AS MEASURED FROM THE CENTERLINE OF BEARING IN EACH DIRECTION. INCLUDING (ALL BEAMS, DIAPHRAGMS, BEARING ASSEMBLIES, STIFFENERS, CONNECTORS, DIAGONALS, CROSSFRAME BRACING, LATERAL BRACING, FLANGE PLATES AND ALL OTHER RELATED STEEL COMPONENTS SHALL BE CLEANED AND PAINTED.
 - b). ALL STRUCTURAL STEEL COMPONENTS SHALL BE CLEANED AND PAINTED WITHIN A AREA AS MEASURED VERTICALLY TWO FEET (2') FROM THE BOTTOM FLANGE OF THE HAUNCHED GIRDER AND TO A WIDTH OF THIRTYFIVE FEET (35') AS MEASURED HORIZONTALLY FROM THE END OF THE TEN FOOT (10') LINE, (INCLUDES ALL MAIN GIRDERS AND STIFFENERS ONLY).

EXISTING STRUCTURAL STEEL DESIGNATED FOR CLEANING AND PAINTING SHALL BE CLEANED PER "NEAR WHITE BLAST CLEANING" - SSPC-SP10" AND PAINTED ACCORDING THE THE REQUIREMENTS OF "PAINT SYSTEM 1 - OZ/E/U". THE COLOR OF THE FINAL FINISH COAT FOR ALL STRUCTURAL STEEL SHALL BE "REDDISH BROWN, MUNSELL NO. 2.5 YR 7/4".

COMMITMENTS

NONE

DATE: 12-6-11

PREPARED BY: Don Brown
DISTRICT STUDIES & PLANS ENGINEER

EXAMINED BY: Herb Gray
DISTRICT CONSTRUCTION ENGINEER

Wayne Phillips
DISTRICT MATERIALS ENGINEER

Bruce A. Buckner
DISTRICT OPERATIONS ENGINEER

FILE NAME = c:\pwwork\pwwork\woodshankr\148268492	USER NAME = woodshankr1 366833-shr-deta1a.DGN	DESIGNED - YOGESH PATEL	REVISED - _____	STATE OF ILLINOIS DEPARTMENT OF TRANSPORTATION	GENERAL NOTES	F.A.P. RTE. 68	SECTION 02R01-3	COUNTY LASALLE	TOTAL SHEETS 13	SHEET NO. 2		
PLOT SCALE = 1/8" = 1' / in.	CHECKED - RON WOODSHANK	DRAWN - YOGESH PATEL	REVISED - _____			SCALE: 50	SHEET NO. 1 OF 1 SHEETS	STA. _____	TO STA. _____	CONTRACT NO. 68B33		
PLOT DATE = 12/6/2011	DATE - _____	DATE - _____	REVISED - _____			ILLINOIS FED. AID PROJECT						

URBAN

CONSTR. CODE

100% STATE

STRUCTURE

0014

0-01282-3001	0-01282-3002
	1
8172	
0.5	0.5
12744	
	1
0.25	0.75

CODE NO.	ITEM	UNIT	TOTAL QUANTITY
50606701	CLEANING AND PAINTING STRUCTURAL STEEL, LOCATION 1	L SUM	1
58700300	CONCRETE SEALER	SQ FT	8172
67100100	MOBILIZATION	L SUM	1
X0326106	BLAST CLEANING BRIDGE CONCRETE SURFACE	SQ FT	12744
X5060601	CONTAINMENT AND DISPOSAL OF NON-LEAD PAINT CLEANING RESIDUES NO. 1	L SUM	1
X5067500	BRIDGE CLEANING AND PAINTING WARRANTY	L SUM	1

FILE NAME =	USER NAME = woodshankr1	DESIGNED - YOGESH PATEL	REVISED - _____
at\pwork\pwork\woodshankr1\0260492\0366B33-ahd-detail.dgn		DRAWN - YOGESH PATEL	REVISED - _____
	PLOT SCALE = 100.0000 ' / 1"	CHECKED - RGN WOODSHANK	REVISED - _____
	PLOT DATE = 11/2/2011	DATE - _____	REVISED - _____

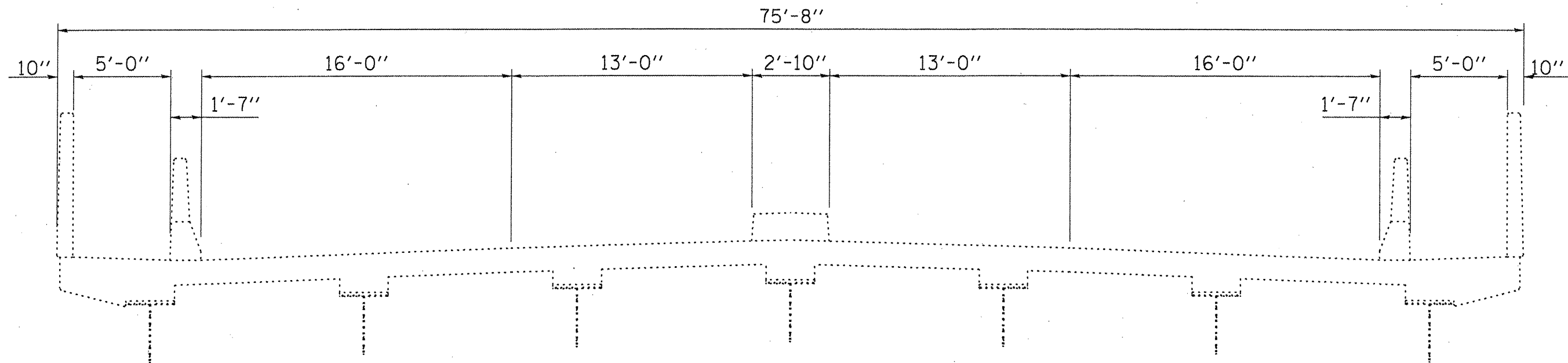
**STATE OF ILLINOIS
DEPARTMENT OF TRANSPORTATION**

SUMMARY OF QUANTITIES

SCALE: _____ SHEET NO. 1 OF 1 SHEETS STA. _____ TO STA. _____

F.A.P. RTE.	SECTION	COUNTY	TOTAL SHEETS	SHEET NO.
68	(12R)-3	LASALLE	13	3
			CONTRACT NO. 66B33	
ILLINOIS FED. AID PROJECT				

Rev.



TYPICAL CROSS SECTION

S.N. 050-0180

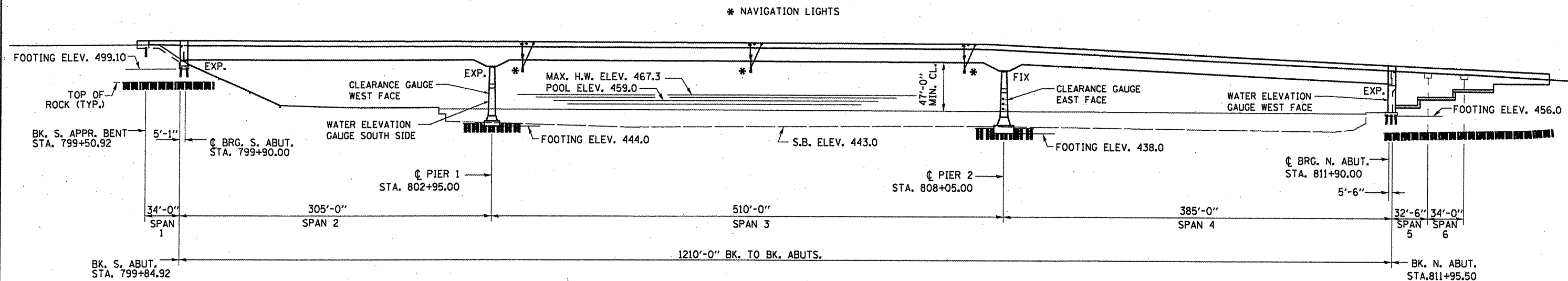
FILE NAME =	USER NAME = woodshankr-l	DESIGNED - YOGESH PATEL	REVISED -
c:\pwork\pwork\woodshankr-l\d0260492\0366933-shr-detail.dgn		DRAWN - YOGESH PATEL	REVISED -
	PLOT SCALE = 100.0000' / 1"	CHECKED - RON WOODSHANK	REVISED -
	PLOT DATE = 11/2/2011	DATE -	REVISED -

**STATE OF ILLINOIS
DEPARTMENT OF TRANSPORTATION**

TYPICAL SECTION (STRUCTURE)

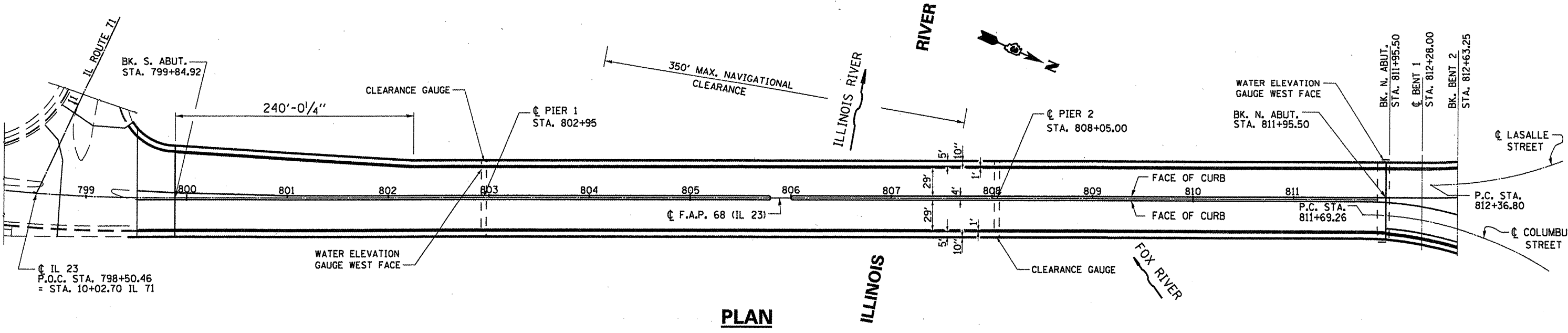
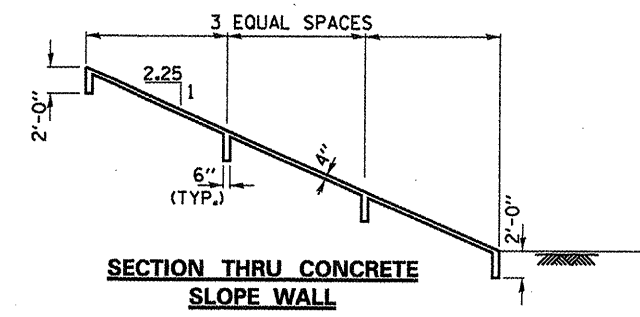
SCALE: _____ SHEET NO. 1 OF 1 SHEETS STA. _____ TO STA. _____

F.A.P. RTE.	SECTION	COUNTY	TOTAL SHEETS	SHEET NO.
68	(12R)I-3	LASALLE	13	4
CONTRACT NO. 66B33				
ILLINOIS FED. AID PROJECT				



ELEVATION

ELEVATION ALONG COLUMBUS STREET



PLAN
SN 050-0180

GENERAL PLAN AND ELEVATION

TOTAL BILL OF MATERIAL

ITEM	UNIT	TOTAL
BLAST CLEANING BRIDGE	SO FT	12744
CONCRETE SURFACE		
CONCRETE SEALER	SO FT	8172

SN 050-0180
FAP ROUTE 68 (IL 23)
OVER ILLINOIS RIVER
SECTION (12R1)-3
LASALLE COUNTY
STA. 805+45.00

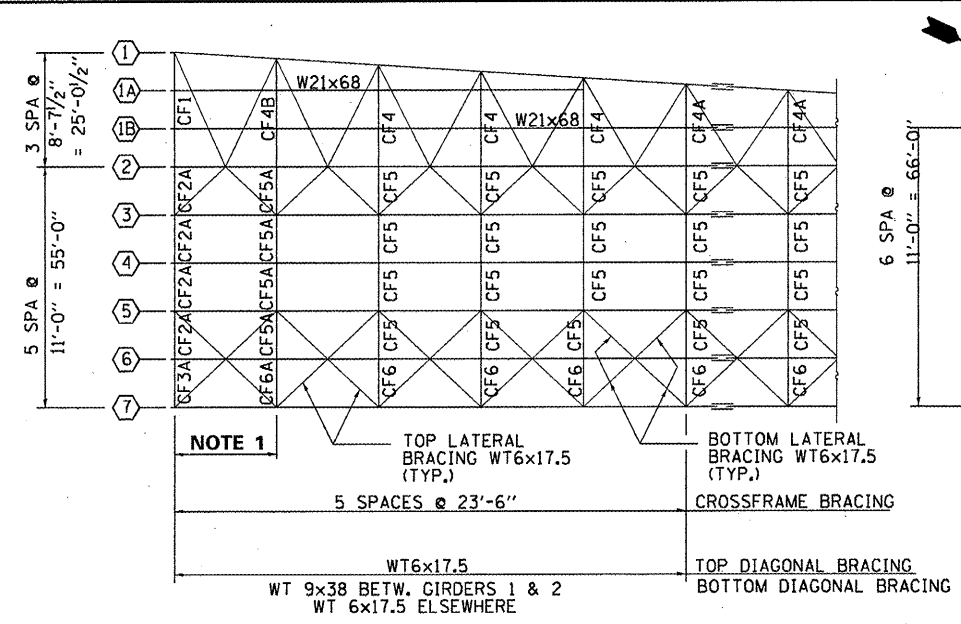
FILE NAME =	USER NAME = woodshenkr1	DESIGNED - YOGESH PATEL	REVISED -
ca:\pwwork\pwwid\woodshenkr1\0268492\366833-shr-details.DGN		DRAWN - YOGESH PATEL	REVISED -
	PLOT SCALE = 1/8" = 1'-0"	CHECKED - RON WOODSHANK	REVISED -
	PLOT DATE = 11/2/2011	DATE -	REVISED -

STATE OF ILLINOIS
DEPARTMENT OF TRANSPORTATION

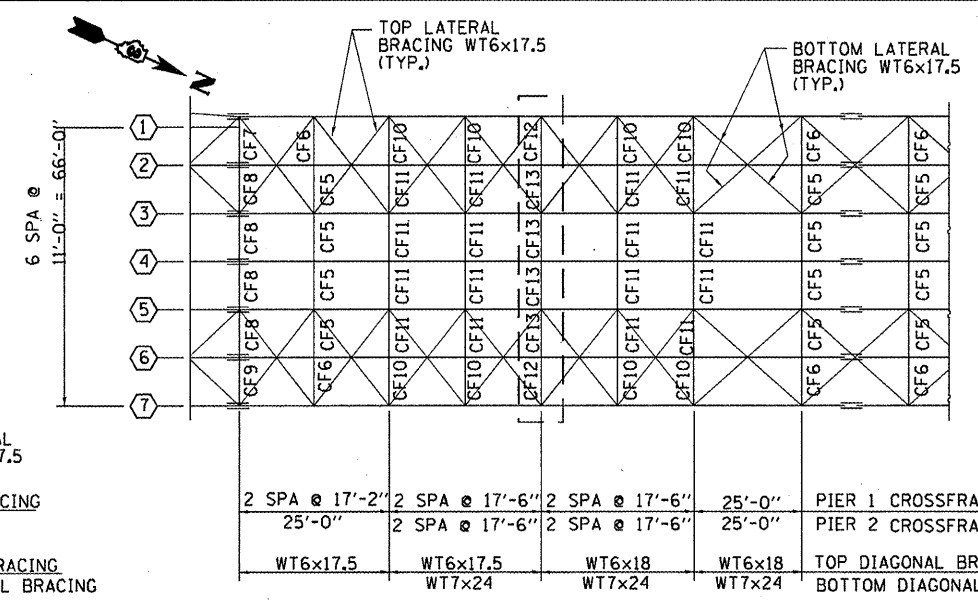
PLAN AND ELEVATION
FOR S.N. 050-0180

SCALE: _____ SHEET NO. 1 OF 9 SHEETS STA. _____ TO STA. _____

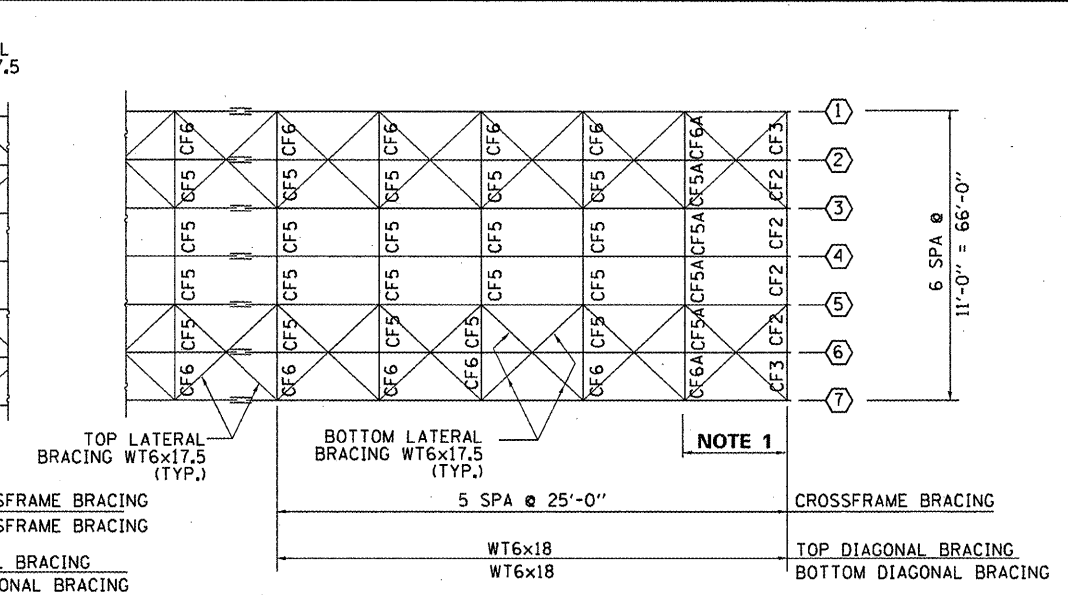
F.A.P. RTE. 68	SECTION (12R1)-3	COUNTY LASALLE	TOTAL SHEETS 13	SHEET NO. 5
CONTRACT NO. 66B33				
ILLINOIS FED. AID PROJECT				



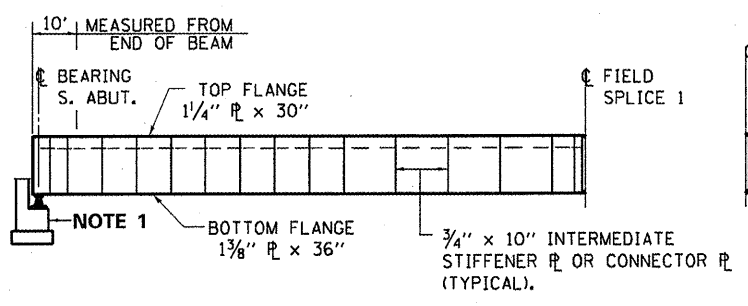
PLAN AT S. ABUT



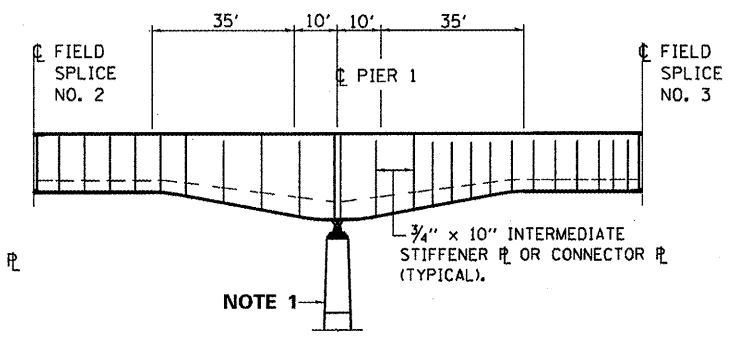
PLAN AT PIER 1 & 2



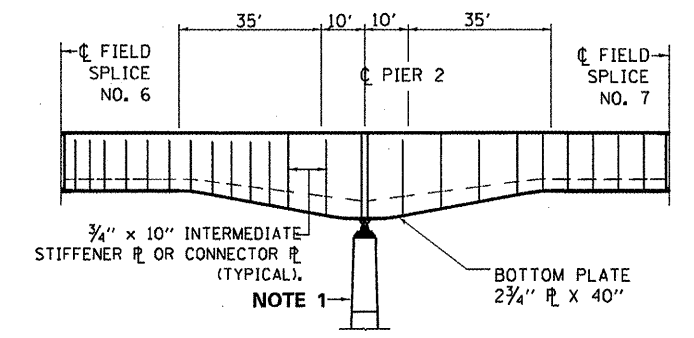
PLAN AT N. ABUT.



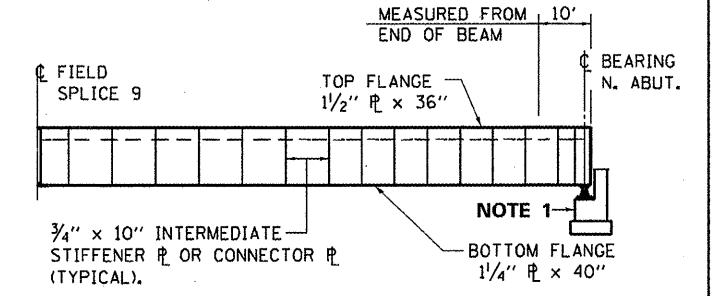
ELEVATION AT S. ABUT.



ELEVATION AT PIER 1 & 2



ELEVATION AT PIER 2



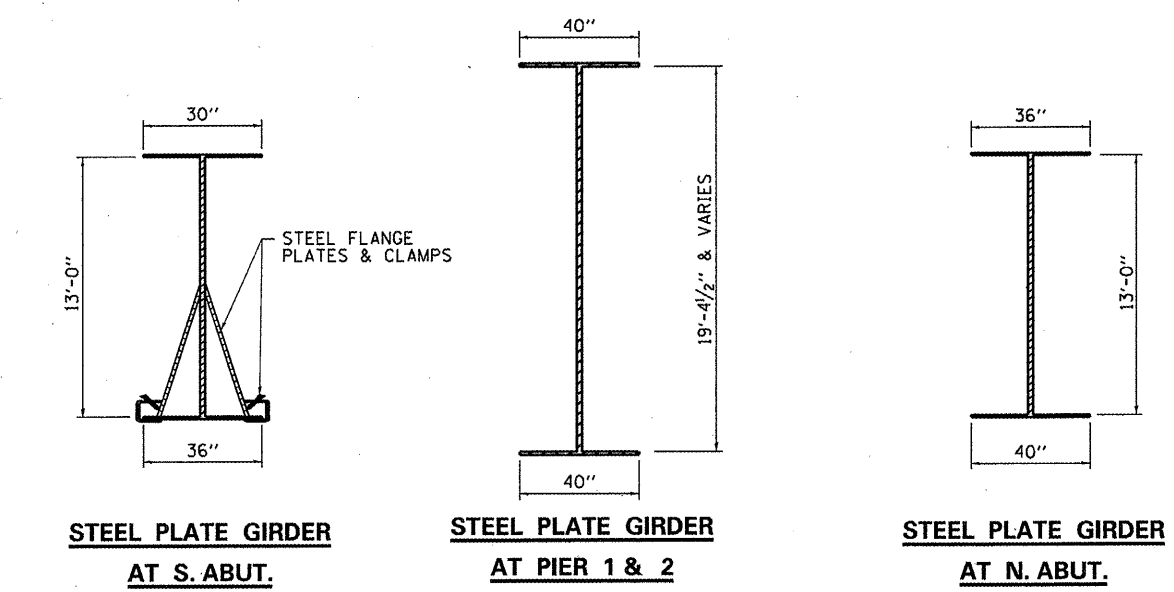
ELEVATION AT N. ABUT.

NOTE 1: CLEAN AND SEAL (REMOVE ALL RUST STAINS) AND SEAL EXPOSED ABUTMENT FACES AND PIERS.

GENERAL NOTES

EXISTING STEEL FLANGE PLATES AND CLAMPS FASTENED TO THE BOTTOM FLANGES AT THE SOUTH ABUTMENT SHALL BE REMOVED PRIOR TO THE CLEANING AND PAINTING OF THE STRUCTURAL STEEL (BEAMS, BEARINGS, ETC.). FLANGE PLATES AND CLAMPS SHALL BE CLEANED AND PAINTED ACCORDING TO THE SPECIAL PROVISION FOR "SURFACE PREPARATION AND PAINTING REQUIREMENTS FOR WEATHERING STEEL". IF THE ENGINEER DETERMINES THAT THE CLAMPS ARE UNUSABLE AFTER REMOVAL, THEY SHALL BE REPLACED WITH AN EQUIVALENT TYPE, AND THE NEW CLAMPS SHALL BE CLEANED AND PAINTED. COST OF THE REPLACEMENT CLAMPS SHALL NOT BE PAID FOR SEPARATELY BUT SHALL BE INCLUDED IN THE COST OF "CLEANING AND PAINTING STEEL BRIDGE".

THE ORGANIC ZINC RICH PRIMER / EPOXY / URETHANE PAINT SYSTEM SHALL BE USED FOR FIELD PAINTING OF EXISTING STRUCTURAL STEEL (WEATHERING STEEL). THE FINISH COAT FOR "ALL" STRUCTURAL STEEL SURFACES" SHALL BE RED BROWN, MUNSELL NO. 2.5YR 3/4.



STEEL PLATE GIRDER AT S. ABUT.

STEEL PLATE GIRDER AT PIER 1 & 2

STEEL PLATE GIRDER AT N. ABUT.

STEEL FRAMING - PLAN

SN 050-0180
FAP ROUTE 68 (IL 23)
OVER ILLINOIS RIVER
SECTION (1ZR)-2
LASALLE COUNTY

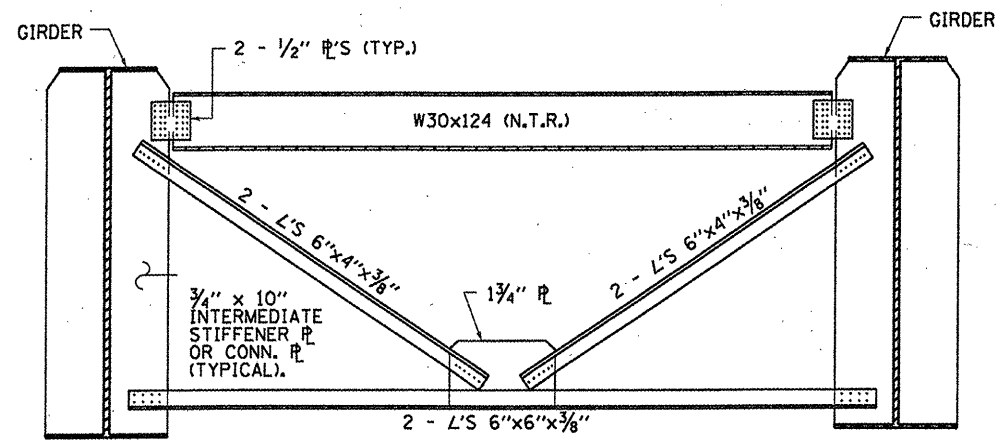
FILE NAME =	USER NAME = woodshankr1	DESIGNED -	REVISED -
ct:\pwork\pjd\dot\woodshankr1\d0260492\066833-sht-details.DGN		DRAWN -	REVISED -
PLOT SCALE = 100.0000 / in.		CHECKED -	REVISED -
PLOT DATE = 12/5/2011		DATE -	REVISED -

STATE OF ILLINOIS
DEPARTMENT OF TRANSPORTATION

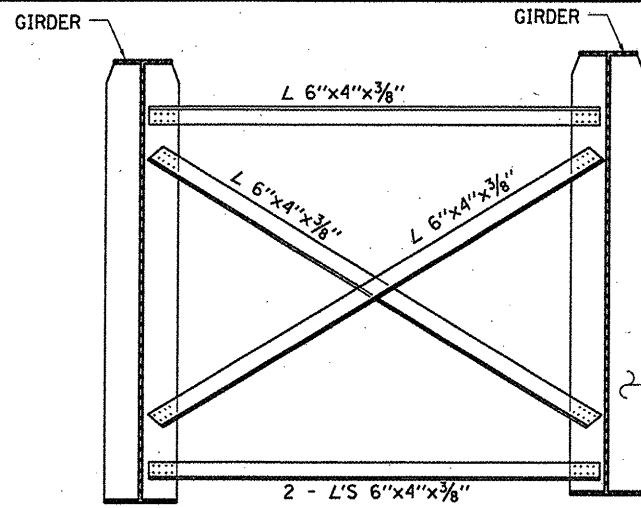
STEEL FRAMING DETAILS FOR SN 050-0180

SCALE: _____ SHEET NO. 2 OF 9 SHEETS STA. _____ TO STA. _____

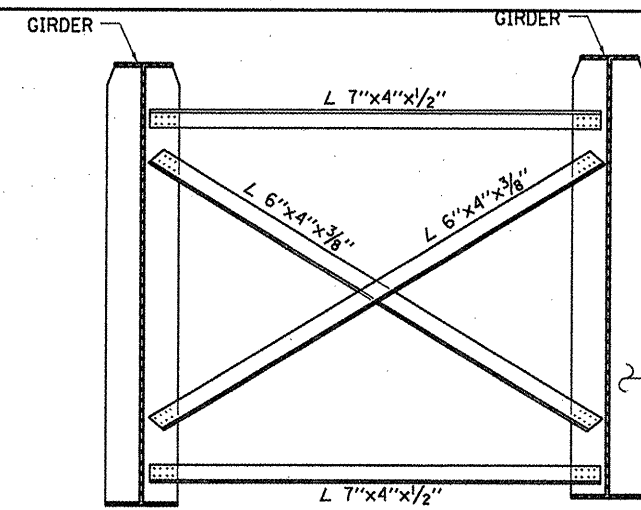
F.A.P. RTE. 68	SECTION (1ZR)-3	COUNTY LASALLE	TOTAL SHEETS 13	SHEET NO. 6
			CONTRACT NO. 66B33	
ILLINOIS FED. AID PROJECT				



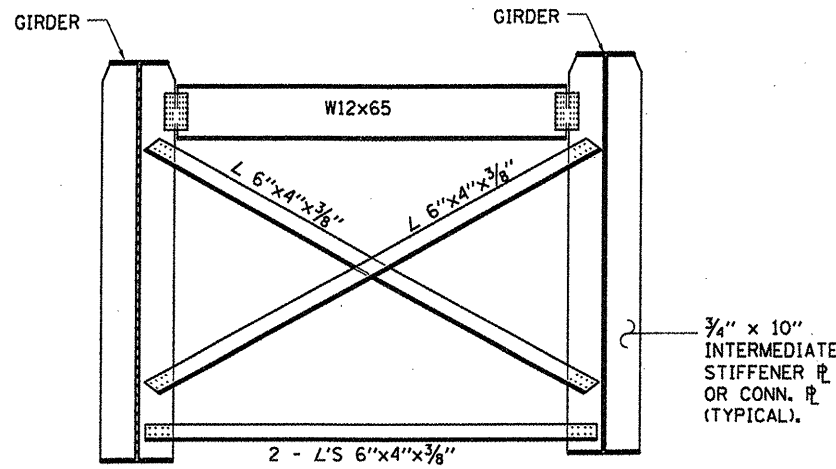
CROSSFRAME CF1 & CF2A



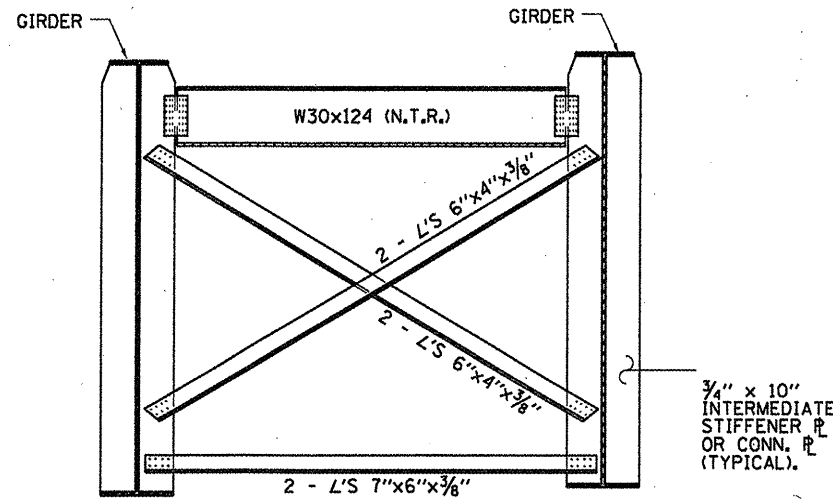
CROSSFRAME CF6 & CF6A
CF5 SIMILIAR TO CF6



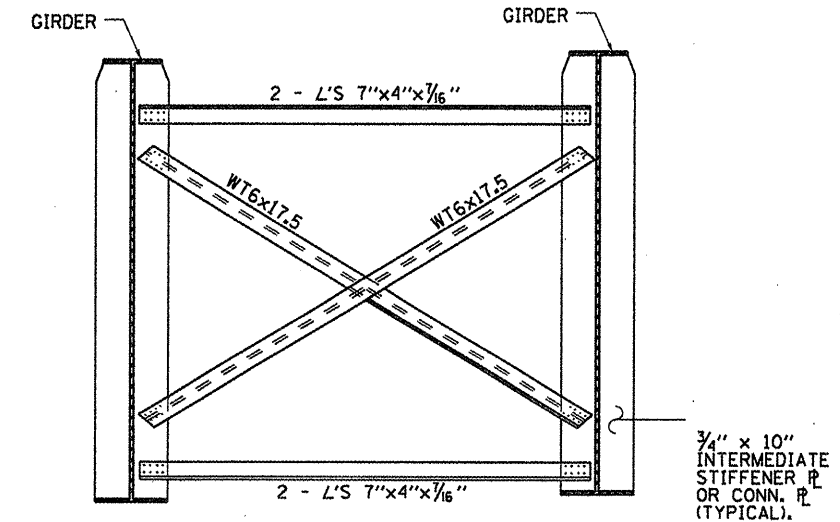
CROSSFRAME CF10 & CF11



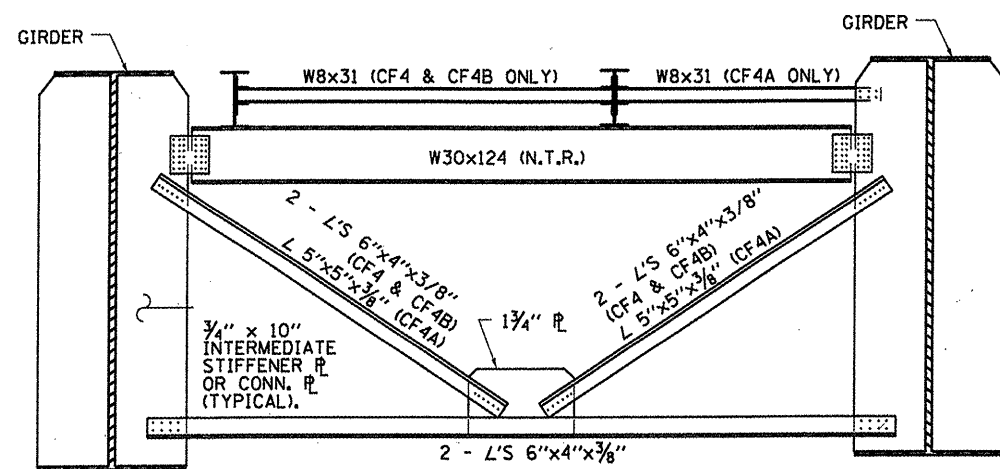
CROSSFRAME CF2 & CF3



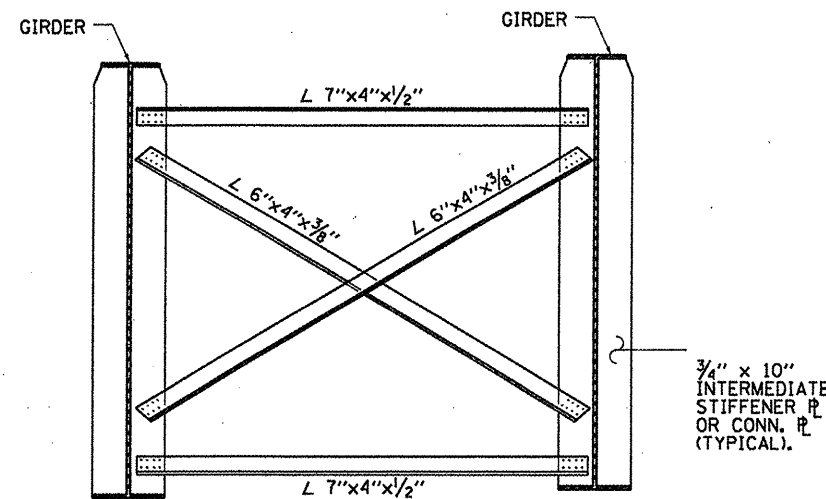
CROSSFRAME CF7 & CF8



CROSSFRAME CF12 & CF13



CROSSFRAME CF4 & CF4B
CF4A SIMILIAR



CROSSFRAME CF8 & CF9

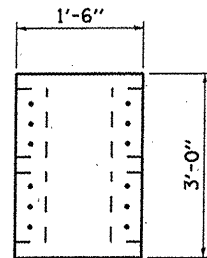
STEEL FRAMING - CROSS FRAMES

SN 050-0180
FAP ROUTE 68 (IL 23)
OVER ILLINOIS RIVER
SECTION (12R)I-2
LASALLE COUNTY

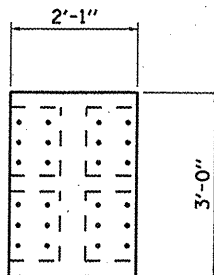
FILE NAME =	USER NAME = woodshankr1	DESIGNED -	REVISED -
ci:\pwork\pwork\woodshankr1\d0260492\366833-sht-details.dgn		DRAWN -	REVISED -
	PLOT SCALE = 100.0000' / 1"	CHECKED -	REVISED -
	PLOT DATE = 11/2/2011	DATE -	REVISED -

STATE OF ILLINOIS
DEPARTMENT OF TRANSPORTATION

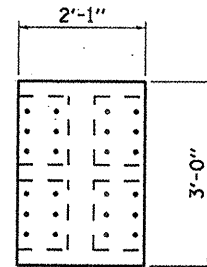
STEEL FRAMING DETAILS		F.A.P. RTE. 68	SECTION (12R)I-3	COUNTY LASALLE	TOTAL SHEETS 13	SHEET NO. 7
SCALE: _____		SHEET NO. 3 OF 9 SHEETS		STA. _____ TO STA. _____		CONTRACT NO. 66B33
ILLINOIS FED. AID PROJECT						



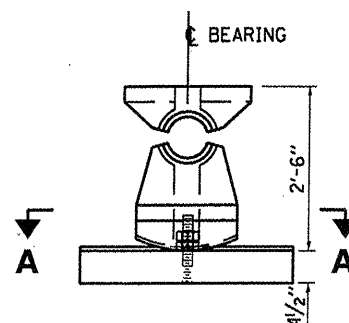
TOP PLATE



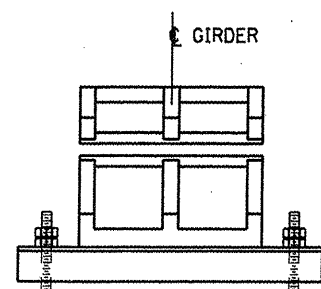
TOP PLATE



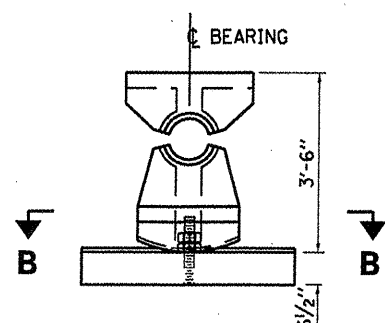
TOP PLATE



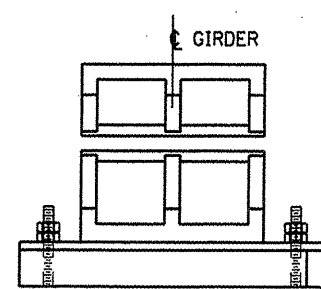
ELEVATION



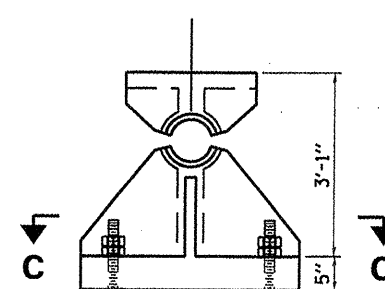
END VIEW



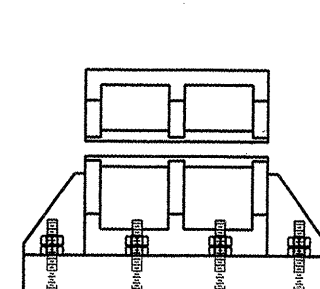
ELEVATION



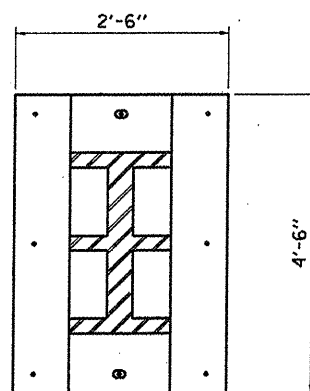
END VIEW



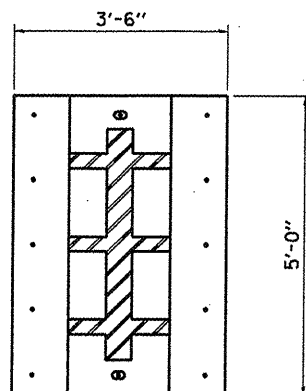
ELEVATION



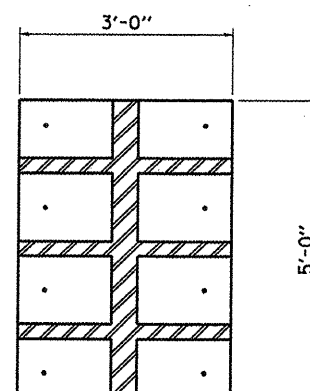
END VIEW



SECTION A-A



SECTION B-B



SECTION C-C

STEEL FRAMING - STEEL BEARINGS

SN 050-0180
 FAP ROUTE 68 (IL 23)
 OVER ILLINOIS RIVER
 SECTION (12R)-2
 LASALLE COUNTY

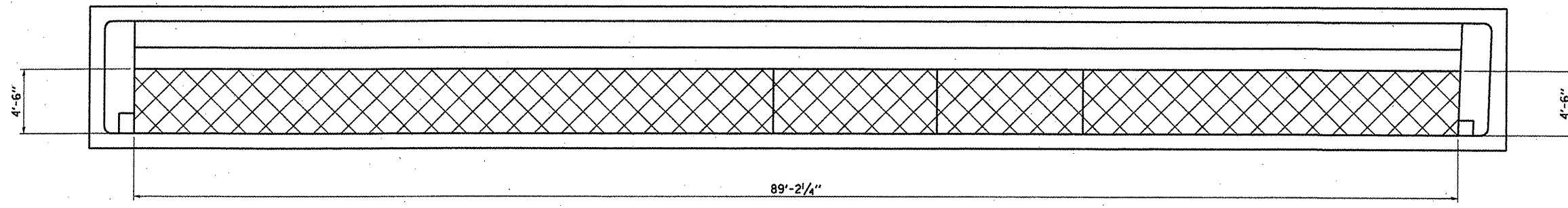
FILE NAME =	USER NAME = woodshankr1	DESIGNED -	REVISED -
c:\pwork\pwork\woodshankr1\d0260492	0366933-shs-deta1a.dgn	DRAWN -	REVISED -
	PLOT SCALE = 100.0000' / 1"	CHECKED -	REVISED -
	PLOT DATE = 11/2/2011	DATE -	REVISED -

STATE OF ILLINOIS
 DEPARTMENT OF TRANSPORTATION

**STEEL BEARING DETAILS
 FOR SN 050-0180**

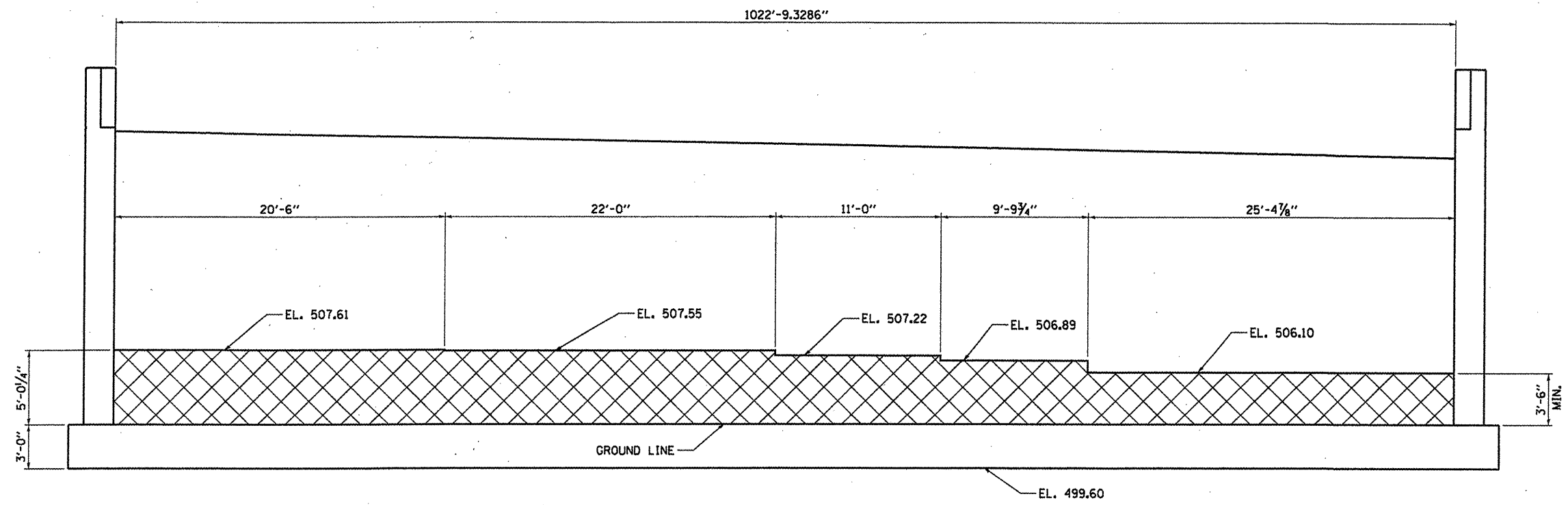
SCALE: SHEET NO. 4 OF 9 SHEETS STA. TO STA.

F.A.P. RTE.	SECTION	COUNTY	TOTAL SHEETS	SHEET NO.
68	(12R)-3	LASALLE	13	8
CONTRACT NO. 66833			ILLINOIS FED. AID PROJECT	



PLAN

 **BLAST CLEANING BRIDGE
CONCRETE SURFACE AND
APPLYING CONCRETE SEALER**

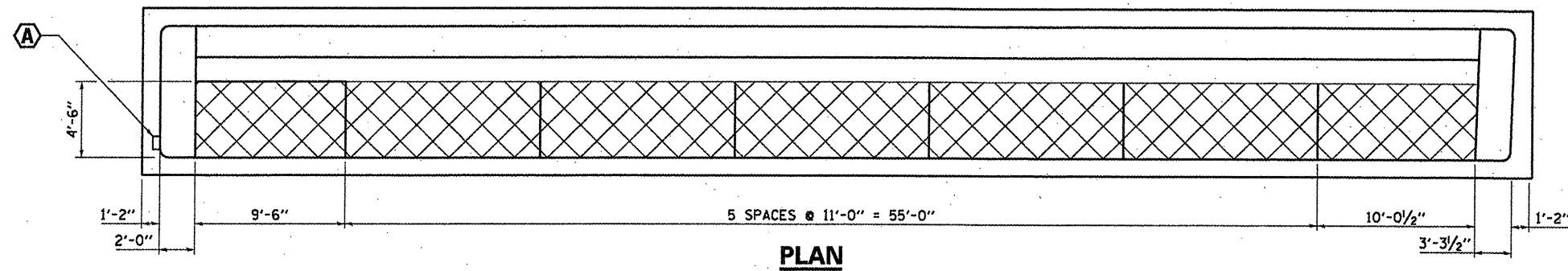


ELEVATION
LOOKING SOUTH

BILL OF MATERIAL

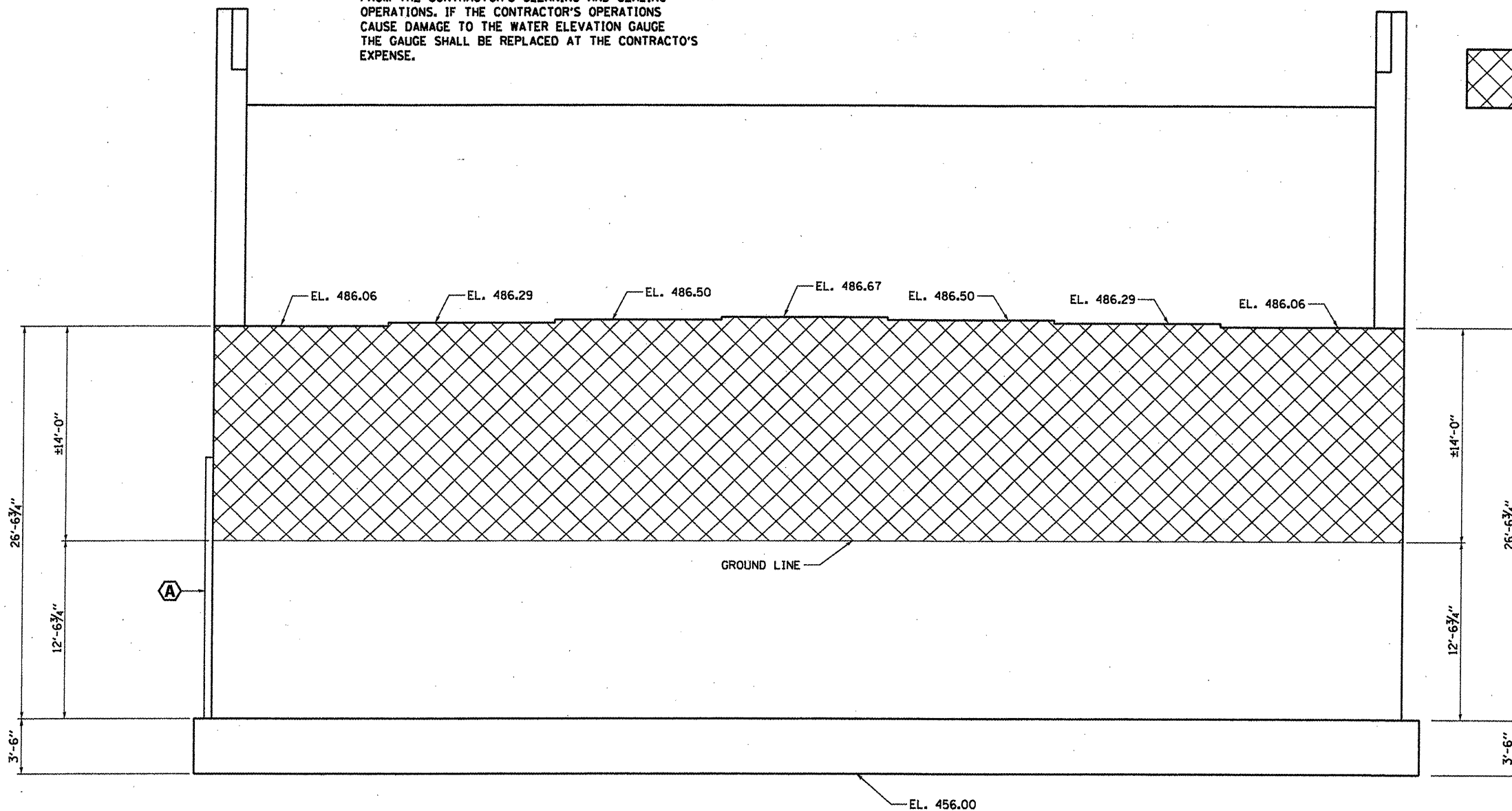
ITEM	UNIT	TOTAL
BLAST CLEANING BRIDGE CONCRETE SURFACE	SQ FT	783
CONCRETE SEALER	SQ FT	783

SOUTH ABUTMENT
SN 050-0180
FAP ROUTE 68 (IL 23)
OVER ILLINOIS RIVER
SECTION (IZR)-3
LASALLE COUNTY
STA. 805+45.00



A WATER ELEVATION GAUGE SHALL BE PROTECTED FROM THE CONTRACTOR'S CLEANING AND SEALING OPERATIONS. IF THE CONTRACTOR'S OPERATIONS CAUSE DAMAGE TO THE WATER ELEVATION GAUGE THE GAUGE SHALL BE REPLACED AT THE CONTRACTOR'S EXPENSE.

 **BLAST CLEANING BRIDGE CONCRETE SURFACE AND APPLYING CONCRETE SEALER**



ELEVATION
LOOKING NORTH

BILL OF MATERIAL

ITEM	UNIT	TOTAL
BLAST CLEANING BRIDGE CONCRETE SURFACE	SO FT	1437
CONCRETE SEALER	SO FT	1437

NORTH ABUTMENT
SN 050-0180
FAP ROUTE 68 (IL 23)
OVER ILLINOIS RIVER
SECTION (12R1)-3
LASALLE COUNTY
STA. 805+45.00

FILE NAME =
c:\pw_work\pwidot\woodshankr\1\d0268492\0366833-sht-deta1a.dgn

USER NAME = woodshankr1
DESIGNED - YOGESH PATEL
DRAWN - YOGESH PATEL
PLOT SCALE = 100.0000 / in.
PLOT DATE = 11/2/2011

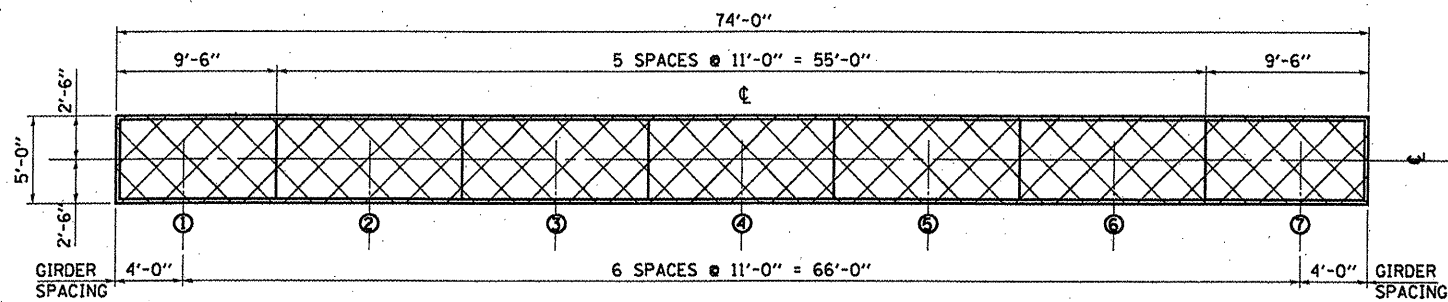
REVISOR - _____
REVISOR - _____
REVISOR - _____
REVISOR - _____

STATE OF ILLINOIS
DEPARTMENT OF TRANSPORTATION

NORTH ABUTMENT DETAILS
FOR SN 050-0180
SCALE: _____ SHEET NO. 6 OF 9 SHEETS STA. _____ TO STA. _____

F.A.P. RTE.	SECTION	COUNTY	TOTAL SHEETS	SHEET NO.
68	(12R1)-3	LASALLE	13	10

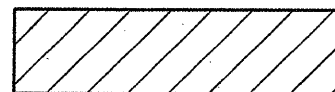
CONTRACT NO. 66B33
ILLINOIS FED. AID PROJECT



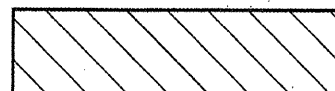
TOP PLAN



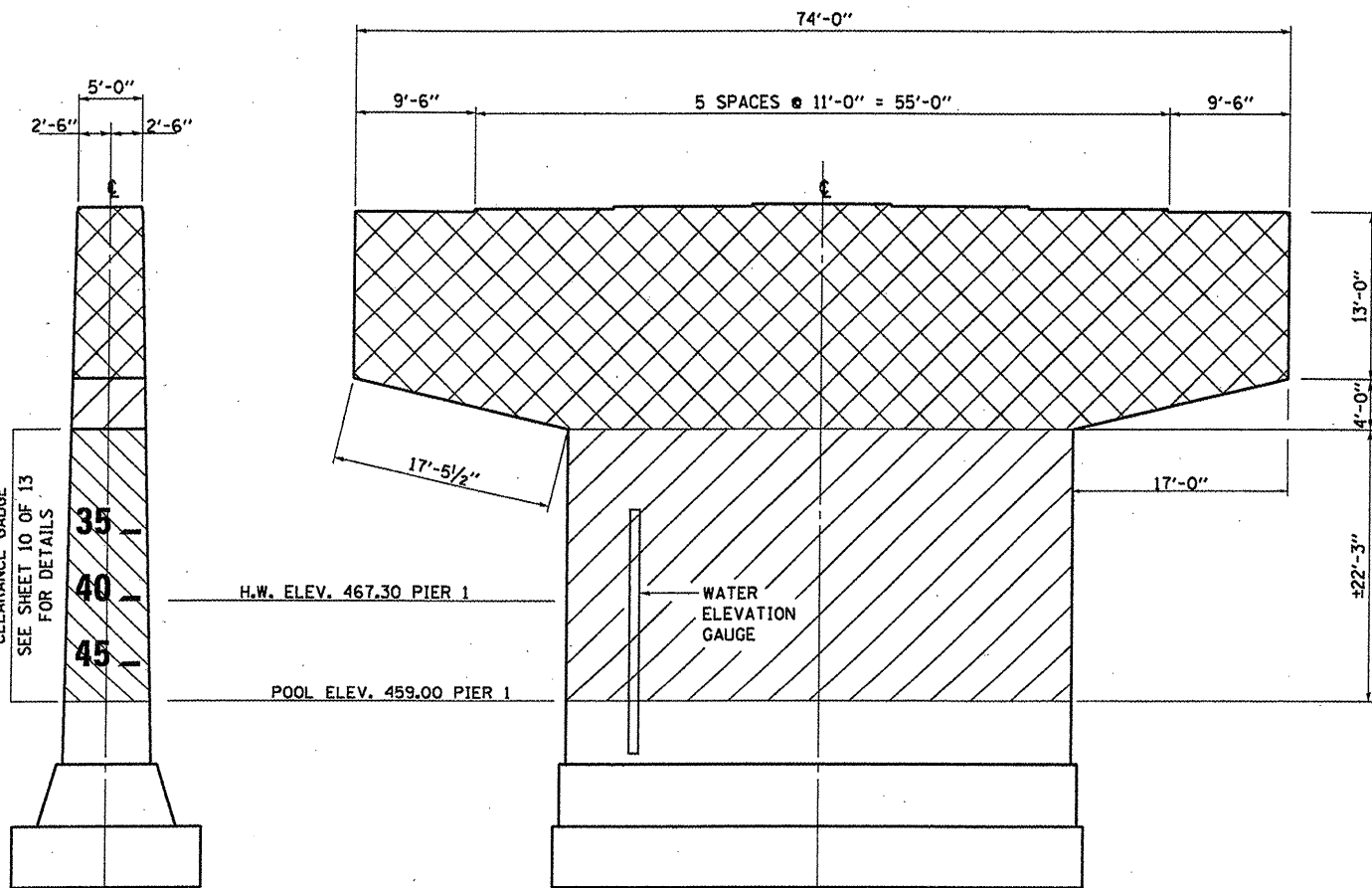
**BLAST CLEANING BRIDGE CONCRETE SURFACE
CONCRETE SEALER**



BLAST CLEANING BRIDGE CONCRETE SURFACE

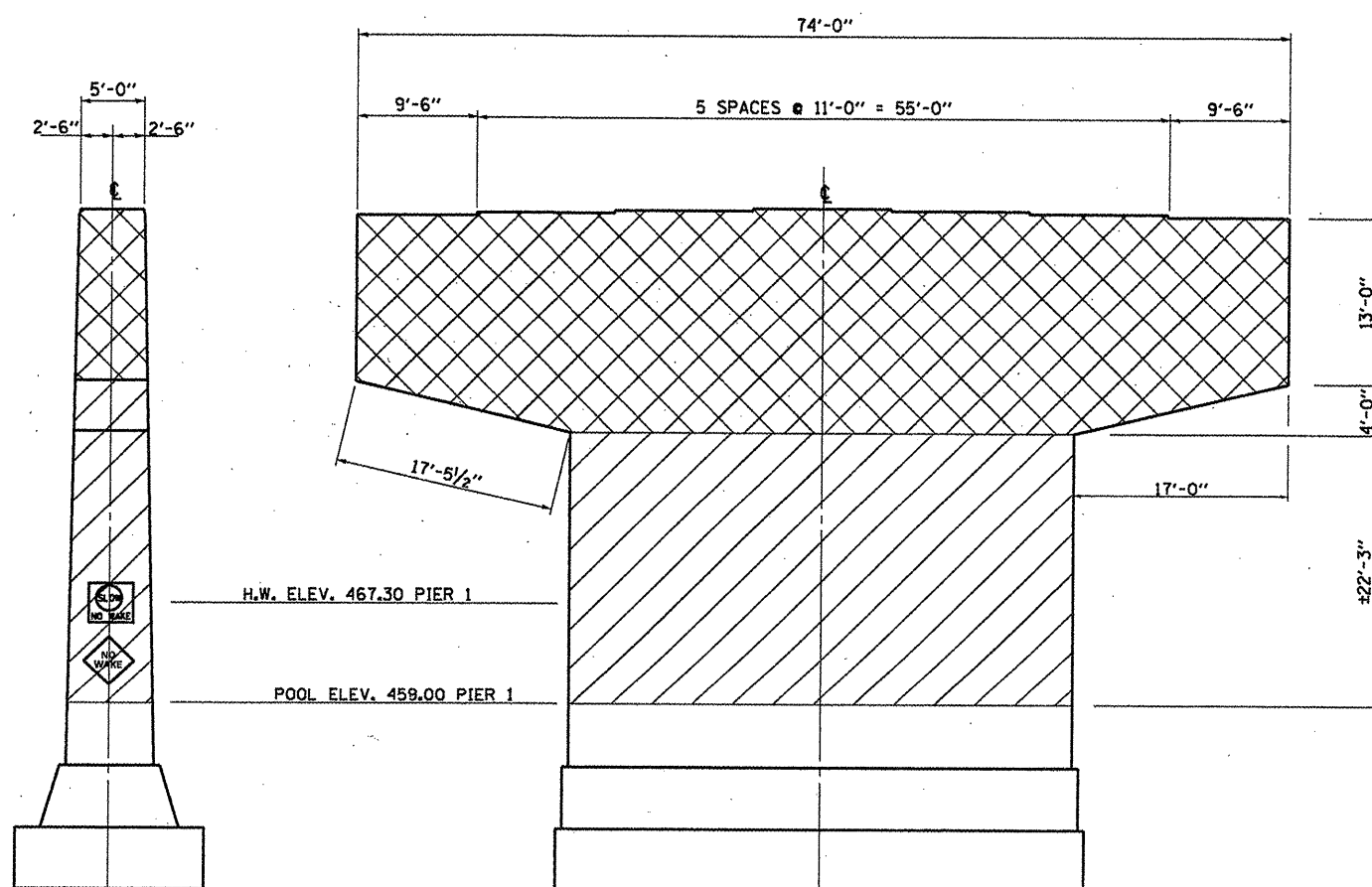


**BLAST CLEANING BRIDGE CONCRETE SURFACE
CONCRETE SEALER
WHITE PAINT BACKGROUND FOR NUMERALS**



WEST END

SOUTH ELEVATION



EAST END

NORTH ELEVATION

NOTES

ALL EXISTING "NO WAKE" SIGNS SHALL BE REMOVED AND REPLACED. COST OF REMOVING EXISTING SIGNS, FURNISHING AND INSTALLING NEW SIGNS SHALL BE INCLUDED IN THE COST OF "BLAST CLEANING BRIDGE CONCRETE SURFACE".

EXISTING WATER ELEVATION GAUGES ATTACHED TO STRUCTURE SHALL BE PROTECTED FROM THE CONTRACTOR'S BLAST CLEANING AND SEALING OPERATIONS. IF THE GAUGES ARE DAMAGED DUE TO THE CONTRACTOR'S OPERATIONS, THE GAUGES SHALL BE REPLACED AT THE DIRECTION OF THE ENGINEER AT CONTRACTOR'S EXPENSE.

BILL OF MATERIAL - PIER 1

ITEM	UNIT	TOTAL
BLAST CLEANING BRIDGE CONCRETE SURFACE	SQ FT	5262
CONCRETE SEALER	SQ FT	2976

PIER NO. 1
SN 050-0180
FAP ROUTE 68 (IL 23)
OVER ILLINOIS RIVER
SECTION (IZRI)-3
LASALLE COUNTY
STA. 805+45.00

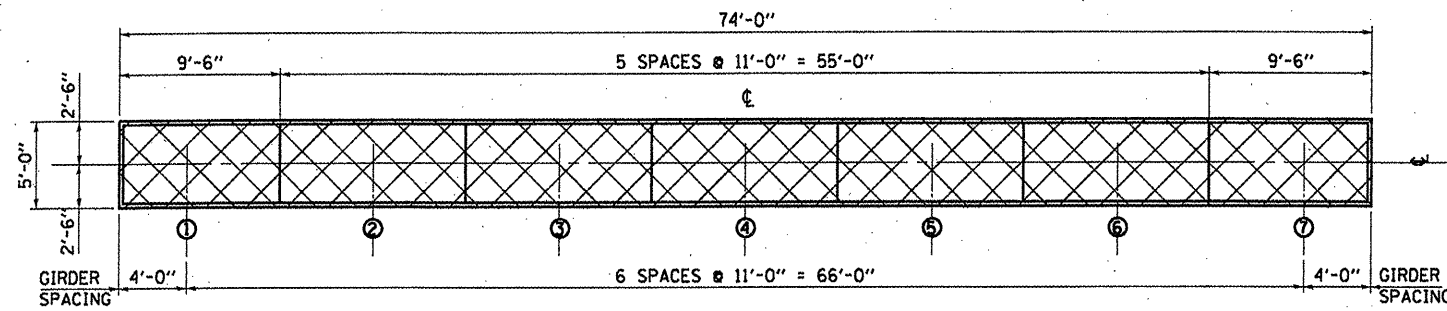
FILE NAME =	USER NAME = woodshankr1	DESIGNED - YOGESH PATEL	REVISED -
o:\p\work\p\udot\woodshankr1\d0268492\	366833-sht-details.dgn	DRAWN - YOGESH PATEL	REVISED -
	PLDT SCALE = 100.0000' / 1"	CHECKED - RON WOODSHANK	REVISED -
	PLDT DATE = 11/2/2011	DATE -	REVISED -

**STATE OF ILLINOIS
DEPARTMENT OF TRANSPORTATION**

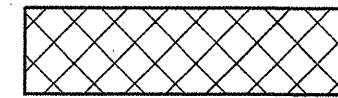
**PIER NO. 1 DETAILS
FOR SN 050-0180**

SCALE: SHEET NO. 7 OF 9 SHEETS STA. TO STA.

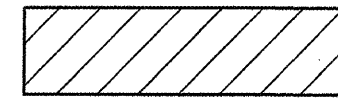
F.A.P. RTE. 68	SECTION (IZRI)-3	COUNTY LASALLE	TOTAL SHEETS 13	SHEET NO. 11
			CONTRACT NO. 66833	
ILLINOIS FED. AID PROJECT				



TOP PLAN



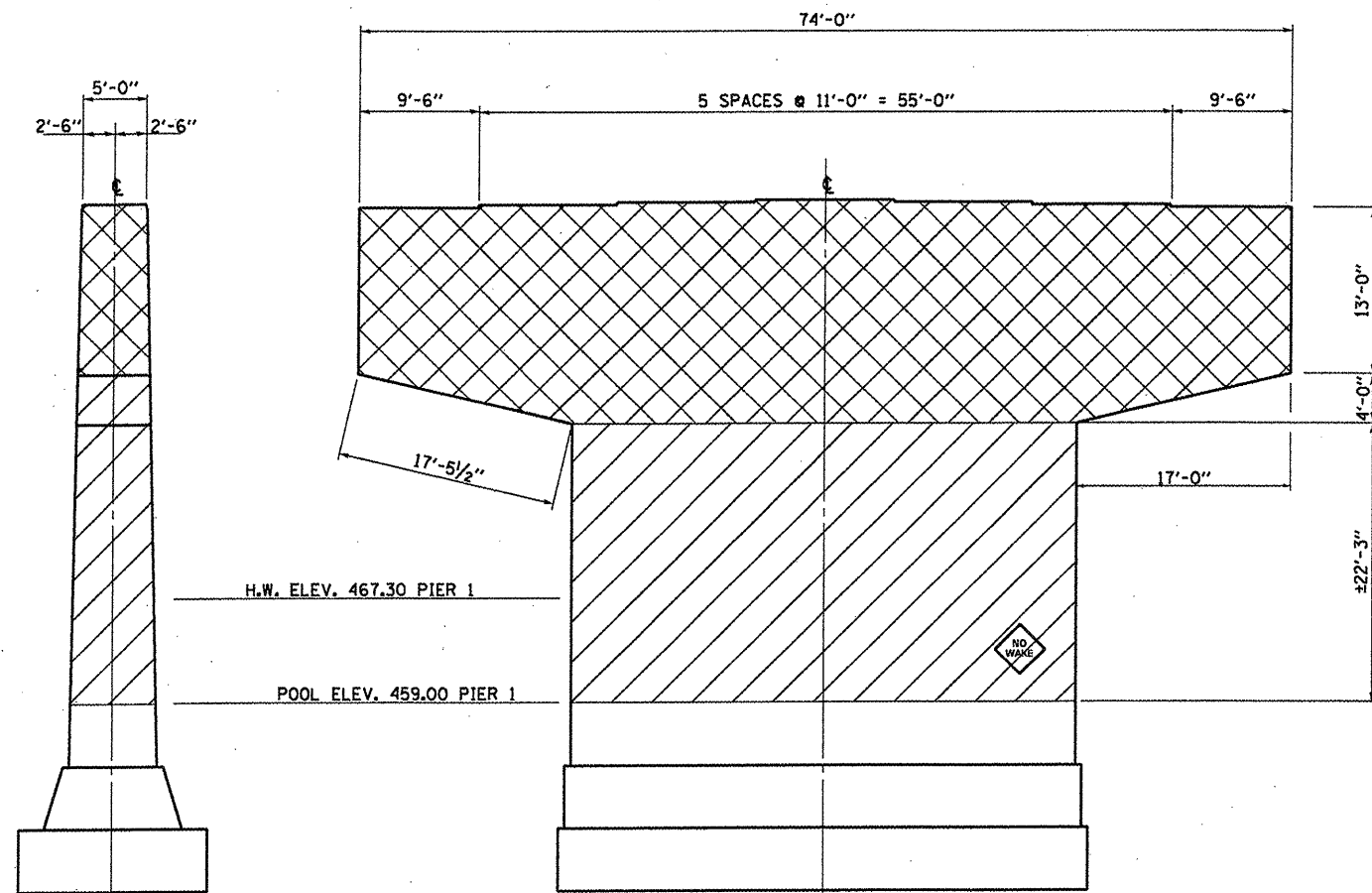
BLAST CLEANING BRIDGE CONCRETE SURFACE
CONCRETE SEALER



BLAST CLEANING BRIDGE CONCRETE SURFACE

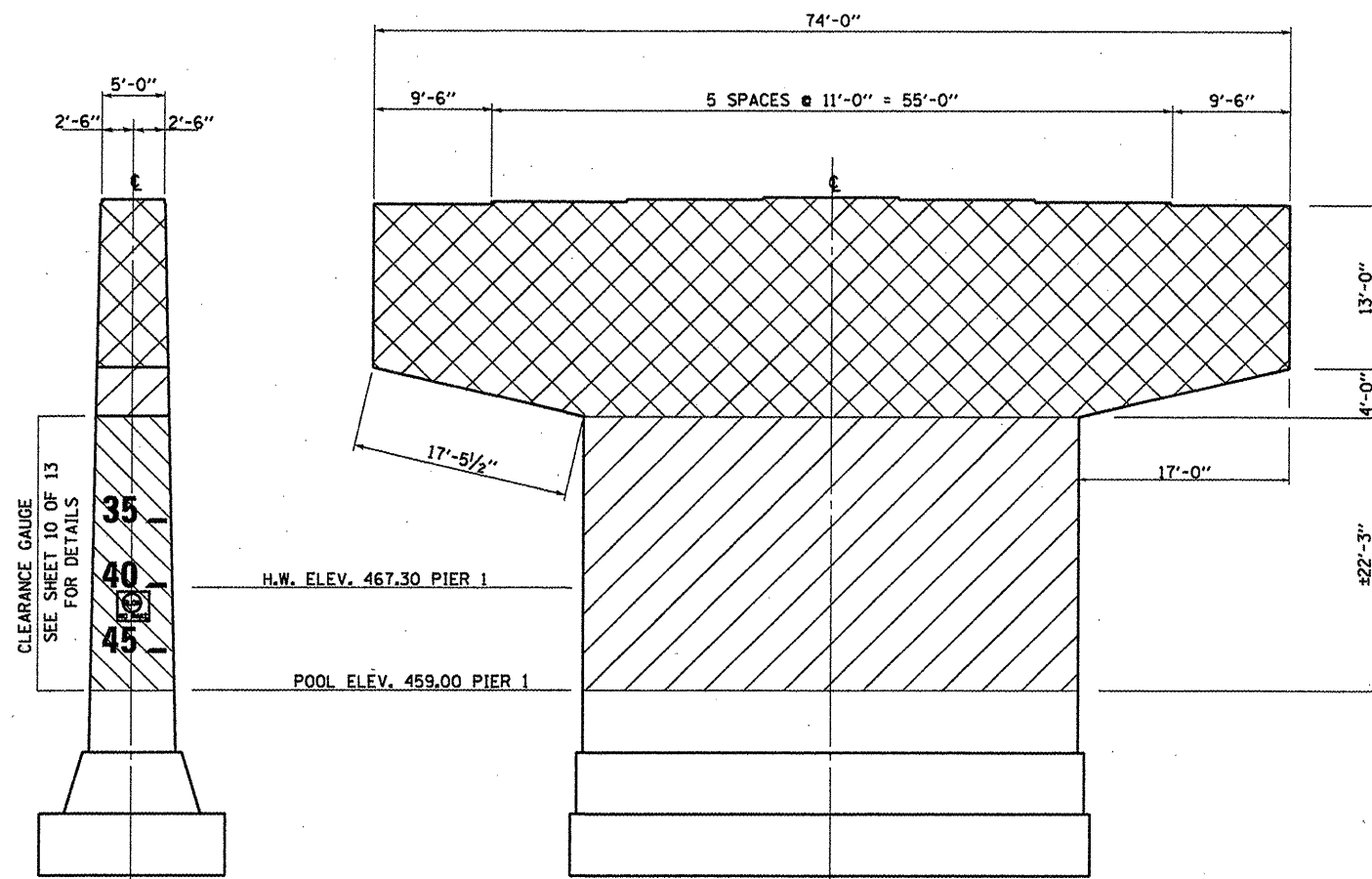


BLAST CLEANING BRIDGE CONCRETE SURFACE
CONCRETE SEALER
WHITE PAINT BACKGROUND FOR NUMERALS



WEST END

SOUTH ELEVATION



EAST END

NORTH ELEVATION

NOTES
EXISTING "NO WAKE" SIGNS SHALL BE REMOVED AND REPLACED.
COST OF REMOVING EXISTING SIGNS, FURNISHING AND INSTALLING
NEW SIGNS SHALL BE INCLUDED IN THE COST OF "BLAST CLEANING
BRIDGE CONCRETE SURFACE".

BILL OF MATERIAL - PIER 2

ITEM	UNIT	TOTAL
BLAST CLEANING BRIDGE CONCRETE SURFACE	SQ FT	5262
CONCRETE SEALER	SQ FT	2976

PIER NO. 2
SN 050-0180
FAP ROUTE 68 (IL 23)
OVER ILLINOIS RIVER
SECTION (12R1)-3
LASALLE COUNTY
STA. 805+45.00

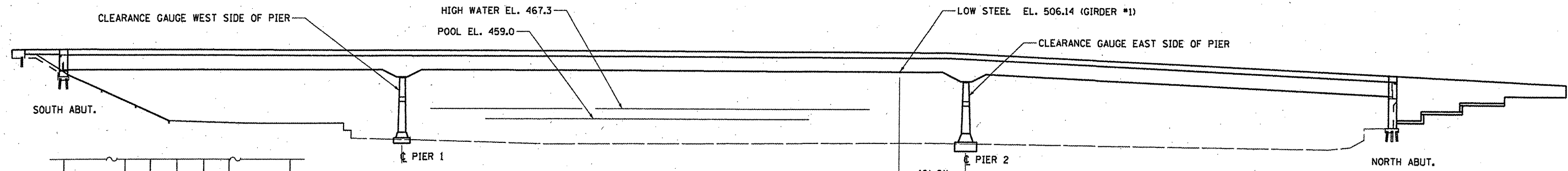
FILE NAME =	USER NAME = woodshankr1	DESIGNED - YOGESH PATEL	REVISED -
ct:\pwork\pwork\woodshankr1\d0260492	366833-ah-t-detail.dgn	DRAWN - YOGESH PATEL	REVISED -
	PLOT SCALE = 100.0000' / 1"	CHECKED - RON WOODSHANK	REVISED -
	PLOT DATE = 11/2/2011	DATE -	REVISED -

STATE OF ILLINOIS
DEPARTMENT OF TRANSPORTATION

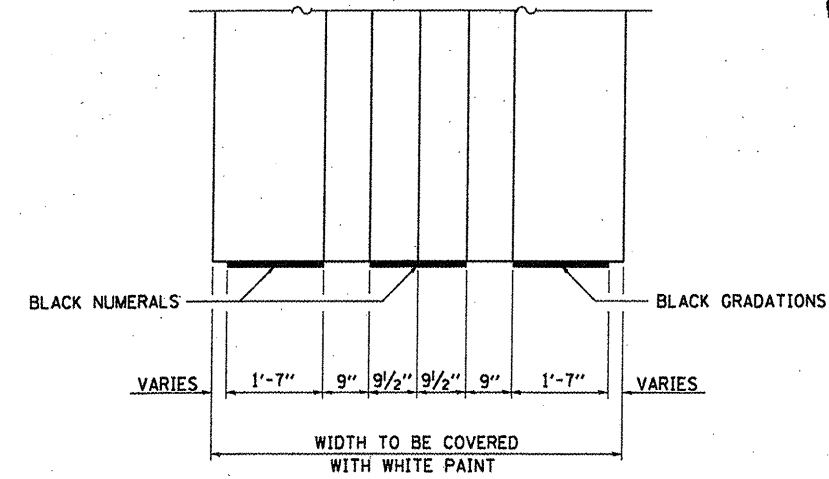
**PIERS NO. 2 DETAILS
FOR SN 050-0180**

SCALE: SHEET NO. 8 OF 9 SHEETS STA. TO STA.

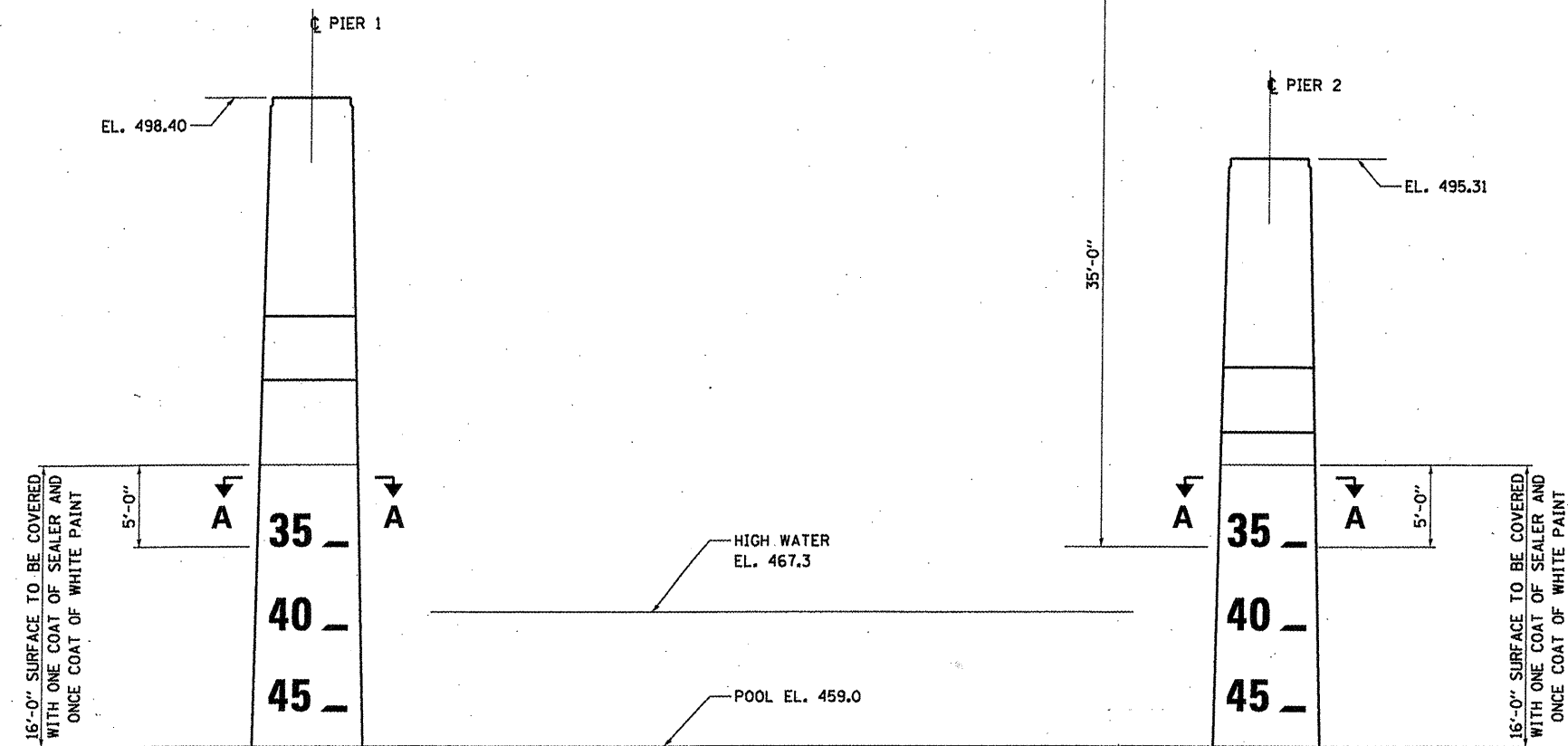
F.A.P. RTE. 68	SECTION (12R1)-3	COUNTY LASALLE	TOTAL SHEETS 13	SHEET NO. 12
CONTRACT NO. 66B33				
ILLINOIS FED. AID PROJECT				



EAST ELEVATION

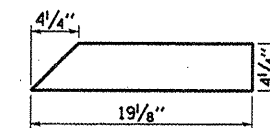
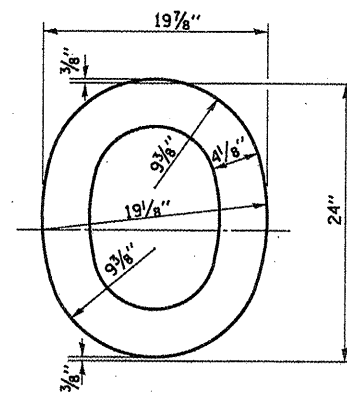
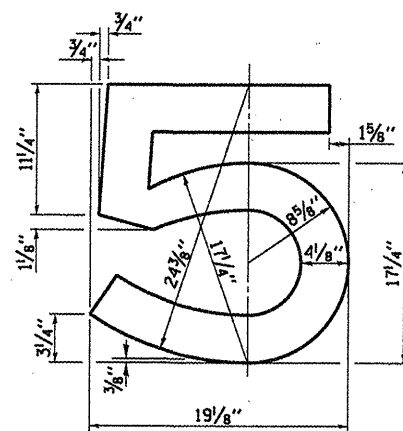
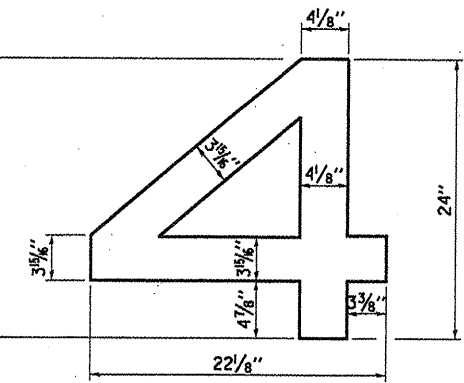
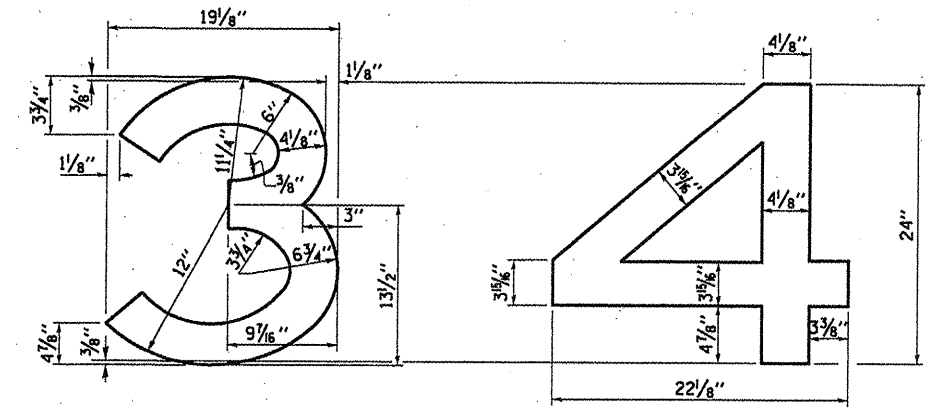


SECTION A-A



WEST ELEVATION PIER 1

EAST ELEVATION PIER 2



NUMERALS FOR PIERS

CLEARANCE GAUGES
 SN 050-0180
 FAP ROUTE 68 (IL 23)
 OVER ILLINOIS RIVER
 SECTION (1ZR)-3
 LASALLE COUNTY
 STA. 805 + 45.00

FILE NAME =	USER NAME = woodshankr1	DESIGNED - YOGESH PATEL	REVISED -
c:\pwwork\pwwork\woodshankr1\d8262492\366833-sht-deta1.dgn	366833-sht-deta1.dgn	DRAWN - YOGESH PATEL	REVISED -
	PLOT SCALE = 100.0000' / 1"	CHECKED - RON WOODSHANK	REVISED -
	PLOT DATE = 11/2/2011	DATE -	REVISED -

STATE OF ILLINOIS
 DEPARTMENT OF TRANSPORTATION

CLEARANCE GAUGES
FOR SN 050-0180

F.A.P. RTE.	SECTION	COUNTY	TOTAL SHEETS	SHEET NO.
68	(1ZR)-3	LASALLE	13	13
CONTRACT NO. 66B33				

SCALE: SHEET NO. 9 OF 9 SHEETS STA. TO STA.

ILLINOIS FED. AID PROJECT