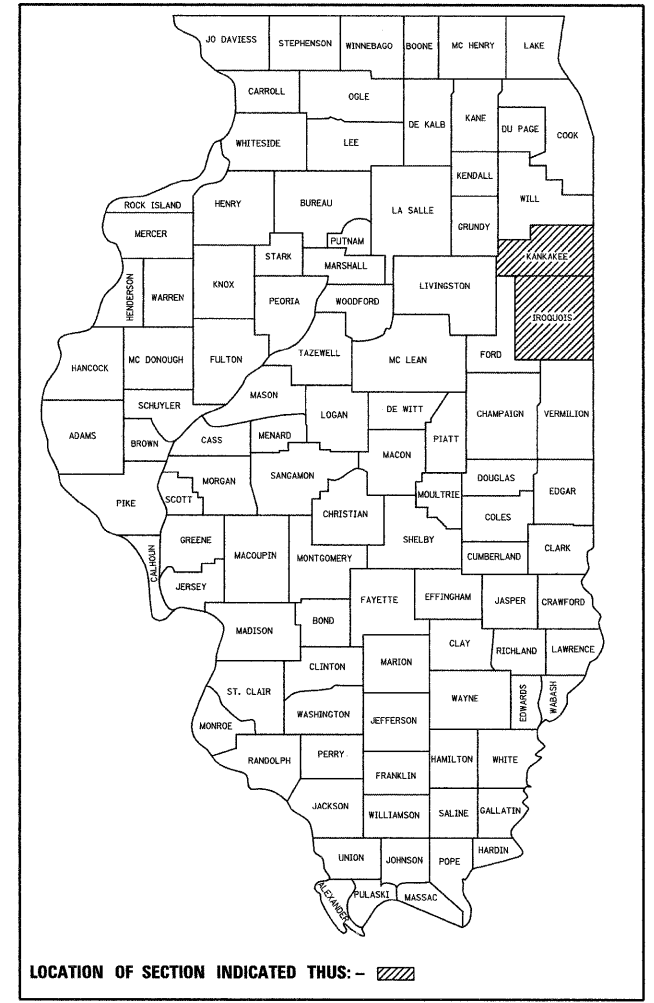


F.A. RTE.	SECTION	COUNTY	TOTAL SHEETS	SHEET NO.
D-3 LED RETROFIT 2012-4			17	1
FED. ROAD DIST. NO.	ILLINOIS	CONTRACT NO. 66B57		

• KANKAKEE & IROQUOIS

D-93-092-11



LOCATION OF SECTION INDICATED THUS: - [hatched pattern]

STATE OF ILLINOIS
DEPARTMENT OF TRANSPORTATION
DIVISION OF HIGHWAYS

PROPOSED
HIGHWAY PLANS

VARIOUS ROUTES
SECTION D-3 LED RETROFIT 2012-4

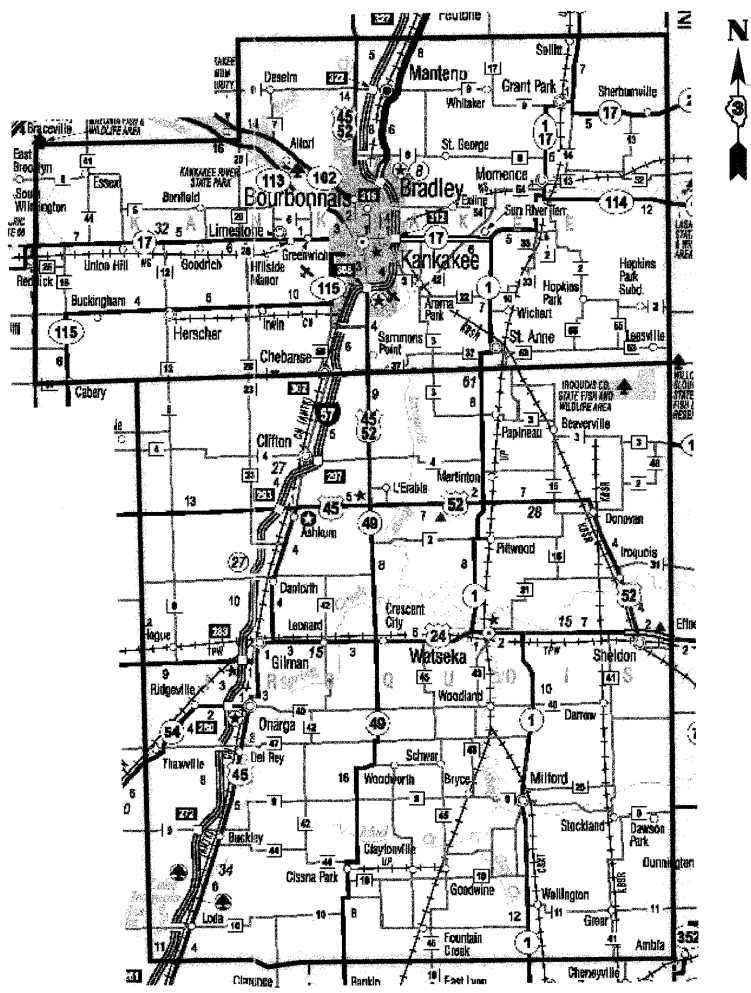
KANKAKEE & IROQUOIS COUNTIES
C-93-142-11

INDEX OF SHEETS

1. COVER SHEET
2. GENERAL NOTES
3. SUMMARY OF QUANTITIES
- 4-9. INTERSECTION LOCATION MAPS
- 10-11. SCHEDULE OF QUANTITIES
12. CABLE PLAN - STATE
13. CABLE PLAN - WATSEKA
14. CABLE PLAN - KANKAKEE
- 15-17. CABLE PLAN - MOMENCE

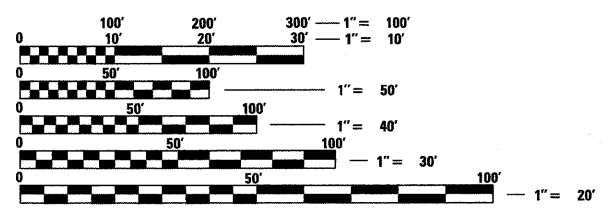
HIGHWAY STANDARDS

- | | |
|-----------|--|
| 000001-06 | STANDARD SYMBOLS, ABBREVIATIONS AND PATTERNS |
| 701001-02 | OFF-ROAD OPERATIONS, 2L, 2W, MORE THAN 15' (4.5 m) AWAY |
| 701006-03 | OFF-ROAD OPERATIONS, 2L, 2W, 15' (4.5 m) TO 24" (600 mm) FROM PAVEMENT EDGE |
| 701011-02 | OFF-ROAD MOVING OPERATIONS, 2L, 2W, DAY ONLY |
| 701101-02 | OFF-ROAD OPERATIONS, MULTILANE, 15' (4.5 m) TO 24" (600 mm) FROM PAVEMENT EDGE |
| 701106-02 | OFF-ROAD OPERATIONS, MULTILANE, MORE THAN 15' (4.5 m) AWAY |
| 701501-06 | URBAN LANE CLOSURE, 2L, 2W, UNDIVIDED |
| 701502-04 | URBAN LANE CLOSURE, 2L, 2W, WITH BIDIRECTIONAL LEFT TURN LANE |
| 701601-07 | URBAN LANE CLOSURE, MULTILANE, 1W OR 2W WITH NONTRAVERSABLE MEDIAN |
| 701606-08 | URBAN LANE CLOSURE, MULTILANE, 2W WITH MOUNTABLE MEDIAN |
| 701701-08 | URBAN LANE CLOSURE, MULTILANE INTERSECTION |
| 701901-02 | TRAFFIC CONTROL DEVICES |
| 862001-01 | UNINTERRUPTABLE POWER SUPPLY (UPS) |
| 880006-01 | TRAFFIC SIGNAL MOUNTING DETAILS |



CITIES

- WATSEKA
- BOURBONNAIS
- BRADLEY
- KANKAKEE
- MOMENCE



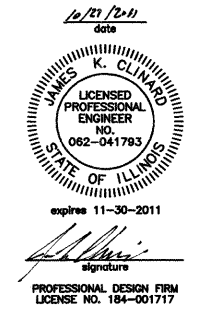
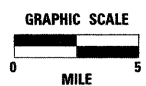
FULL SIZE PLANS HAVE BEEN PREPARED USING STANDARD ENGINEERING SCALES. REDUCED SIZED PLANS WILL NOT CONFORM TO STANDARD SCALES. IN MAKING MEASUREMENTS ON REDUCED PLANS, THE ABOVE SCALES MAY BE USED.

J.U.L.I.E.
JOINT UTILITY LOCATION INFORMATION FOR EXCAVATION
1-800-892-0123
OR 811

PROJECT ENGINEER: TOM HUFNAGEL, P.E.
UNIT CHIEF: DAN DEVINE, P.E.

CONTRACT NO. 66B57

LOCATION MAP



STATE OF ILLINOIS
DEPARTMENT OF TRANSPORTATION
DIVISION OF HIGHWAYS

SUBMITTED 10/28 20 11

Eric J. Blum
DEPUTY DIRECTOR OF HIGHWAYS, REGION ENGINEER

December 9, 20 11
Scott E. Stitt, P.E.
Acting ENGINEER OF DESIGN AND ENVIRONMENT

December 9, 20 11
William R. Frenka
Interim DIRECTOR OF HIGHWAYS, CHIEF ENGINEER

PRINTED BY THE AUTHORITY
OF THE STATE OF ILLINOIS