

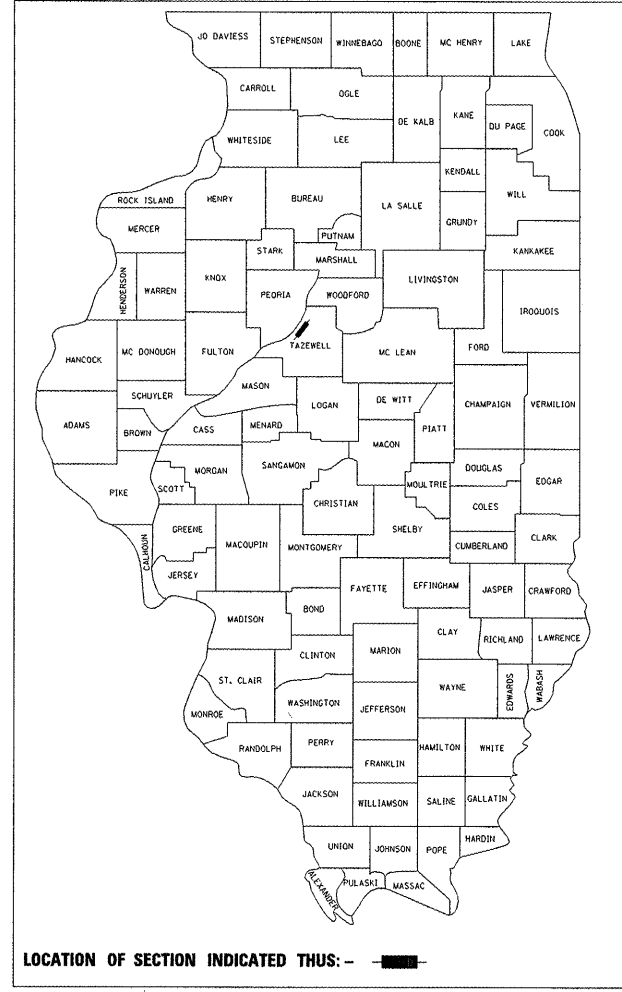
F.A.P. RTE.	SECTION	COUNTY	TOTAL SHEETS	SHEET NO.
399	36 R-7	TAZEWELL	390	1
		ILLINOIS	CONTRACT NO. 68370	

STATE OF ILLINOIS  
DEPARTMENT OF TRANSPORTATION  
DIVISION OF HIGHWAYS

# PROPOSED HIGHWAY PLANS

ROUTE: FAP 399 (IL. RTE. 8)  
SECTION 36 R-7  
PROJECT ACF-0399(012)  
RECONSTRUCTION  
TAZEWELL COUNTY  
C-94-003-04

D-94-003-04



FOR INDEX OF SHEETS, SEE SHEET NO. 2

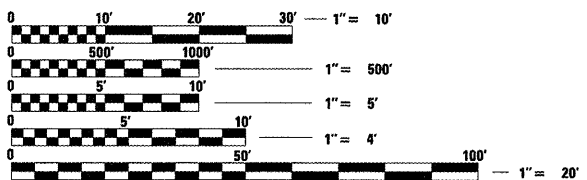
**DESIGN DESIGNATION**

ILLINOIS ROUTE 8  
1327 (10) ARTERIAL -6.03 (PCC-20)  
ADT = 18,600 (2029)  
PV = 94.0%  
SU = 4.5%  
MU = 1.5%

N.P.D.E.S. PERMIT REQUIRED

QC/QA CONCRETE

QC/QA BITUMINOUS

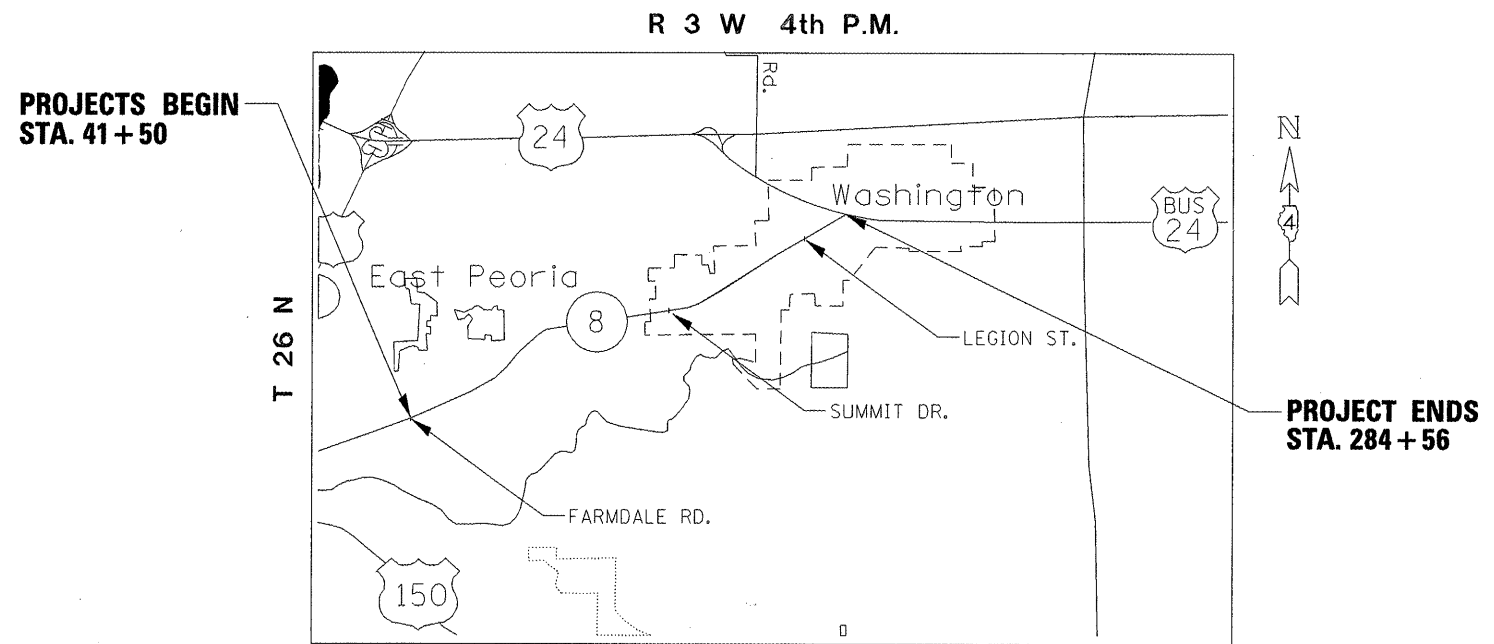


FULL SIZE PLANS HAVE BEEN PREPARED USING STANDARD ENGINEERING SCALES. REDUCED SIZED PLANS WILL NOT CONFORM TO STANDARD SCALES. IN MAKING MEASUREMENTS ON REDUCED PLANS, THE ABOVE SCALES MAY BE USED.

J.U.L.I.E.  
JOINT UTILITY LOCATION INFORMATION FOR EXCAVATION  
1-800-892-0123  
OR 811

PROJECT ENGINEER: MIKE LEWIS 309-671-3454  
LIAISON ENGINEER: ELIAS ELDERZI 309-671-3459

CONTRACT NO. 68370



PROJECTS BEGIN  
STA. 41 + 50

PROJECT ENDS  
STA. 284 + 56

GROSS LENGTH = 24,306 FT. = 4.603 MILE  
NET LENGTH = 6,948 FT. = 1.316 MILE

*Kenneth M. Coulter*  
KENNETH M. COULTER  
DATE: 12/9/11  
062-038839  
LICENSED PROFESSIONAL ENGINEER OF ILLINOIS  
ILLINOIS REGISTERED PROFESSIONAL ENGINEER  
No. 062-038839  
EXPIRATION DATE 11/30/11  
AECOM

PROJECT DESCRIPTION:  
RECONSTRUCTION OF THE EXISTING ROADWAY INTO 5 LANE SECTION. PROJECT INCLUDES EARTHWORK, STORM SEWER, PCC PAVEMENT, UTILITY RELOCATION, DEMOLITION, TEMPORARY SIGNALS, PAVEMENT MARKING, EROSION CONTROL AND ALL COLLATERAL WORK.

STATE OF ILLINOIS  
DEPARTMENT OF TRANSPORTATION  
DIVISION OF HIGHWAYS  
SUBMITTED 10-21 20 11  
*Joseph E. Cowart*  
DEPUTY DIRECTOR OF HIGHWAYS, REGION ENGINEER  
December 9 20 11  
*Scott E. Stitt P.E.*  
acting ENGINEER OF DESIGN AND ENVIRONMENT  
December 9 20 11  
*William R. Fuxler*  
DIRECTOR OF HIGHWAYS, CHIEF ENGINEER

PRINTED BY THE AUTHORITY  
OF THE STATE OF ILLINOIS